

ESS ID: NWGAS-Aqua-101

Mitigation: Horizontal Directional Drill to follow all measures outlined in the EPP including:

- Directional Drilling (PA-13)
- Appendix B, Horizontal Directional Drill Execution Plan
- Appendix C, Frac-out Contingency Plan



Northwest Gas Transmission Project

Project Infrastructure


 Final Preferred Route

Infrastructure

 Provincial Road

 Provincial Trunk Highway

ESS

 Wildlife, Birds and Habitat

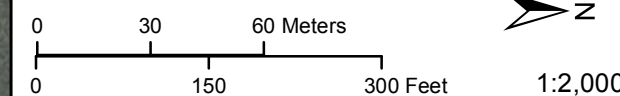
 Water Crossing

NWGAS-Aqua-101
East Branch Colony Creek
Easting: 620220
Northing: 5542893

236

All coordinates displayed are approximate and should only be used as a general guide.

Coordinate System: UTM Zone 14N NAD83
Data Source: MBHydro, ProvMB
Date Created: April 1, 2016



Environmentally Sensitive Sites

Draft: For Discussion Purposes Only

Map: 4

Project Infrastructure

Final Preferred Route

Infrastructure

Provincial Road

Provincial Trunk Highway

Environmentally Sensitive Sites

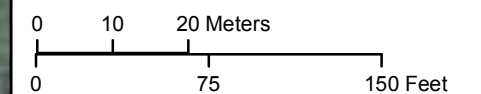
Wildlife, Birds and Habitat

Water Crossing

ESS Buffer (50m)

All coordinates displayed are approximate and should only be used as a general guide.

Coordinate System: UTM Zone 14N NAD83
Data Source: MBHydro, ProvMB
Date Created: April 7, 2016



1:1,000

Environmentally Sensitive Sites

ESS ID: NWGAS-Wild-101 and NWGAS-Aqua-102

Mitigation:

- Construction activity to be minimized around this site.
- Prolonged construction activity during the general nesting window should be avoided
- Ensure no staging areas within the 50m zone

Mitigation: Horizontal Directional Drill to follow all measures outlined in the EPP including:

- Directional Drilling (PA-13)
- Appendix B, Horizontal Directional Drill Execution Plan

NWGAS-Aqua-102
Grassmere Creek Drain
Easting: 620168
Northing: 5544946

NWGAS-Wild-101
Hirundo rustica
Easting: 620183
Northing: 5544943

236

ESS ID: NWGAS-RUse-101

Mitigation: Horizontal Directional Drill to follow all measures outlined in the EPP including:

- Directional Drilling (PA-13)
- Appendix B, Horizontal Directional Drill Execution Plan



Northwest Gas Transmission Project

Project Infrastructure

Final Preferred Route

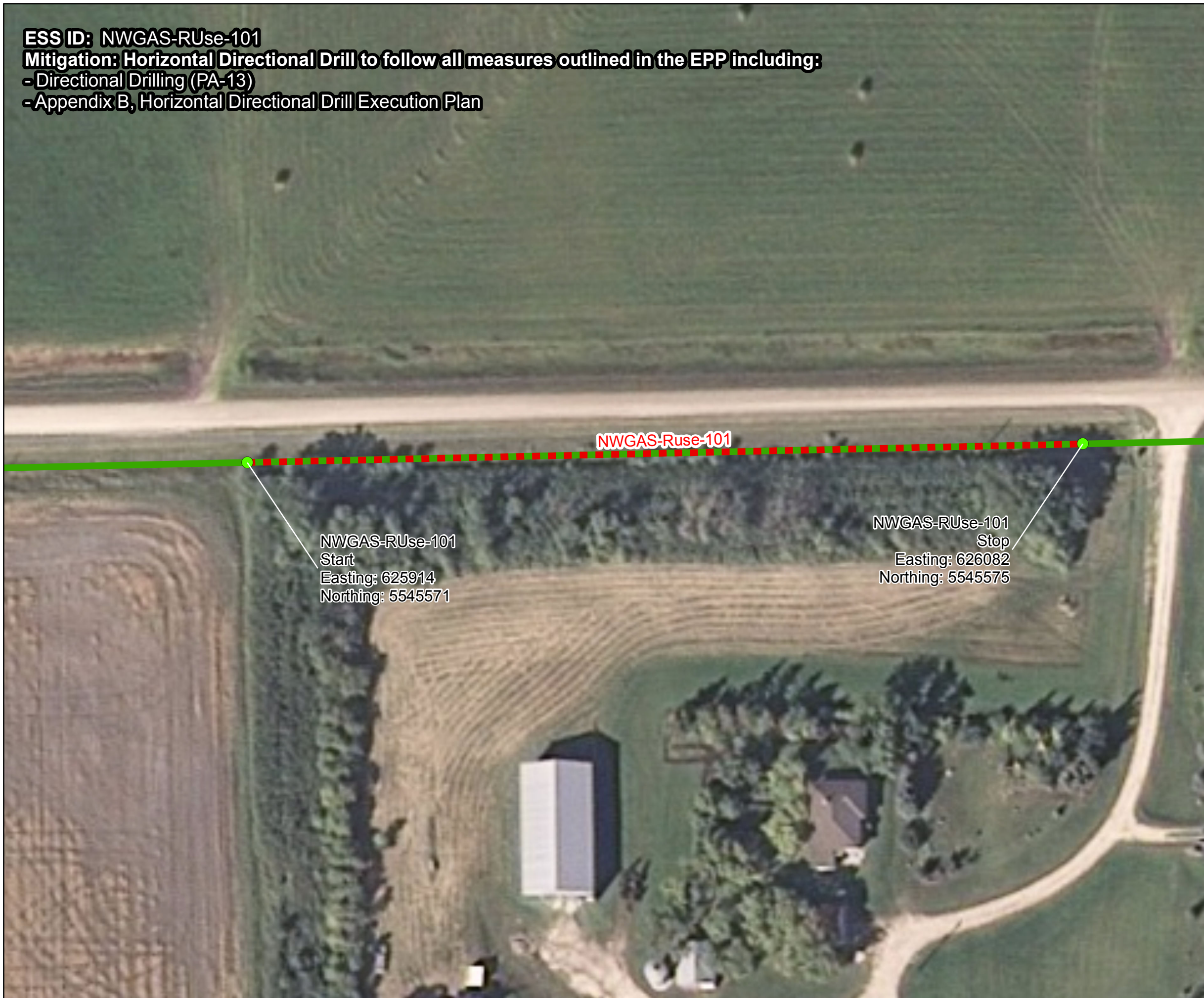
Infrastructure

Provincial Road

Provincial Trunk Highway

ESS

- Adjacent ESS Start/Stop
- Wildlife, Birds and Habitat
- Water Crossing
- Shelterbelt

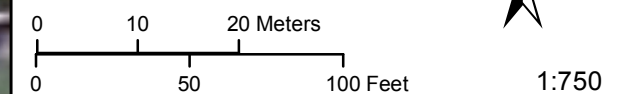


NWGAS-RUse-101
Start
Easting: 625914
Northing: 5545571

NWGAS-RUse-101
Stop
Easting: 626082
Northing: 5545575

All coordinates displayed are approximate and should only be used as a general guide.

Coordinate System: UTM Zone 14N NAD83
Data Source: MBHydro, ProvMB
Date Created: April 1, 2016



Environmentally Sensitive Sites

Draft: For Discussion Purposes Only

ESS ID: NWGAS-RUse-102

Mitigation: Horizontal Directional Drill to follow all measures outlined in the EPP including:

- Directional Drilling (PA-13)
- Appendix B, Horizontal Directional Drill Execution Plan



Northwest Gas Transmission Project

Project Infrastructure

Final Preferred Route

Infrastructure

Provincial Road

Provincial Trunk Highway

ESS

Adjacent ESS Start/Stop

Wildlife, Birds and Habitat

Water Crossing

Shelterbelt

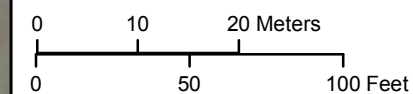
NWGAS-RUse-102

NWGAS-RUse-102
Start
Easting: 633245
Northing: 5548801

NWGAS-RUse-102
Stop
Easting: 633242
Northing: 5548912

All coordinates displayed are approximate and should only be used as a general guide.

Coordinate System: UTM Zone 14N NAD83
Data Source: MBHydro, ProvMB
Date Created: April 1, 2016



1:750

Environmentally Sensitive Sites

Draft: For Discussion Purposes Only

Map: 7