



Stephens 

800-626-0200
www.stephensmfg.com



Thoroughbred

THOROUGHBRED

STATIONARY AND PORTABLE CONCRETE PLANTS



Cement Silo

Standard Silo 374 BBL.
Optional: Silos up to 1,069 BBL single
and dual compartments.
837 - 1,067 have 1/4" 1st band.

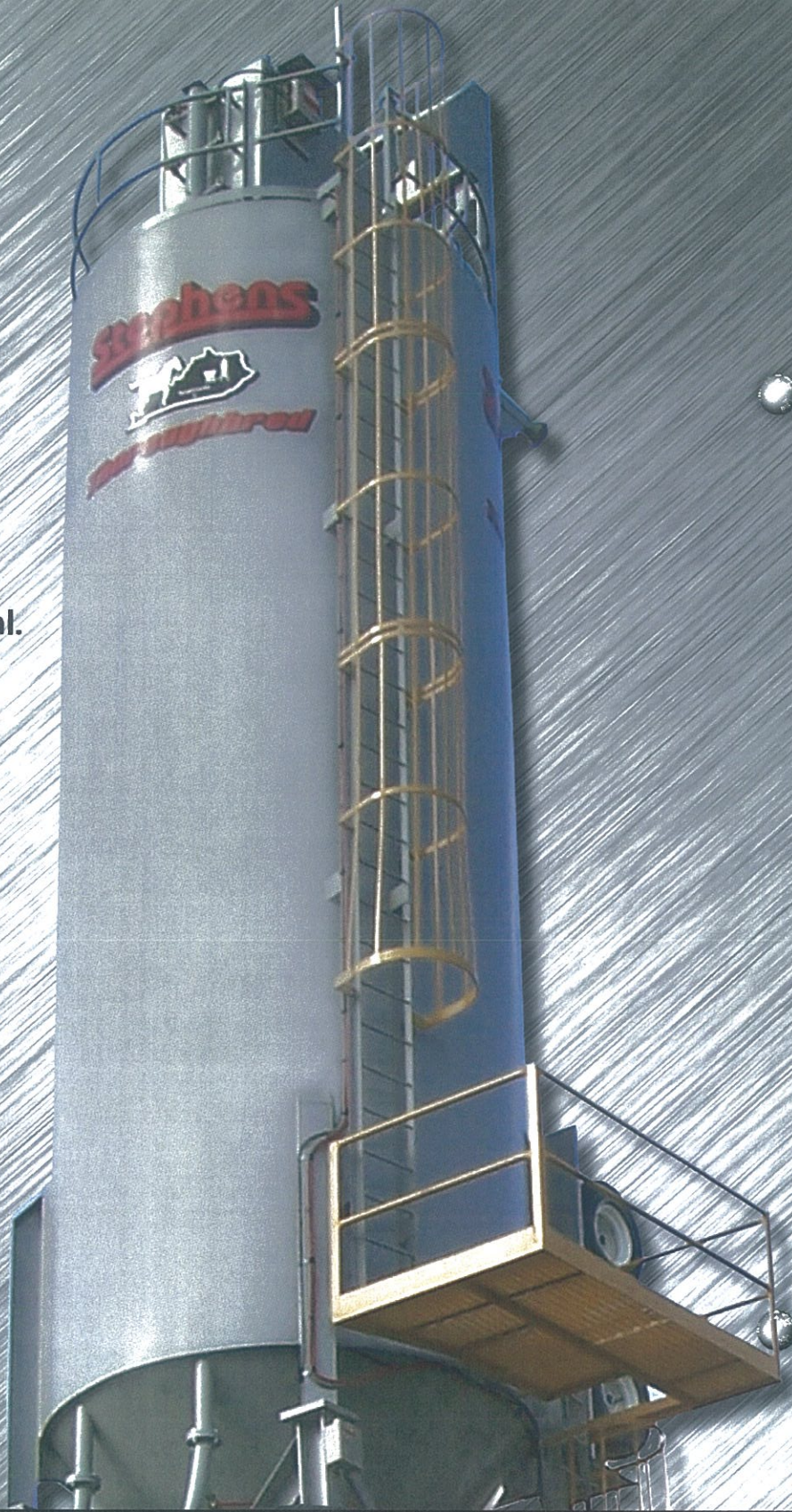
THOROUGHBRÉD

- Standard
- 1,496 cubic feet – cylindrical design – 11'5"-1/2" diameter constructed of 3/16" steel with 1/4" steel top.
- 4" diameter fill line inside silo with cover mounted on top of silo.
- Outside ladder and safety CAGE, with toe board and pipe handrails around top of silo.
- SV-170 filter vent (170 Sq. Ft. cloth) and timer switch controls with wiring in liquid tight flexible metallic conduit from filter vent on top of silo to junction box on plant power panel. Internal electric shaker cleaning devise, with 1/3 HP single-phase motor. Optional: Vents available.
- Hinged silo or cement batcher for easy transporting. (Silos over 528 BBL or 2,112 cu. ft. will be separate load).
- Silo support structure constructed of steel "structural" beams 374-606 = W8x31#, 837 - 1,069 = W8 x 48#.

Thoroughbred Portable Concrete Plant

The Stephens Thoroughbred comes with bolt on extension legs with 13' 6" clearance to metal.

Stephens Mfg. is a member of the CPMB (Concrete Plant Manufacturers Bureau) Each plant will have a CPMB rating plate to guarantee that it meets the specifications for that size plant.



Cement Batcher

- 14 yd cement batcher 140 cu. ft. with 10,000 lb. lever system, one "s" type load cell (100' cable) with 0-10 VDC digital readout, with inching gate on batcher inspection hatch on top of batcher.
- Hanger lugs for hanging test weights and safety chains to secure batcher. Optional: Limit Switches available.



Aggregate Bin

Standard 70 TON - Three Compartments.
(Optional: Bins up to 200 Ton- Six Compartments).

1400 cubic feet 70 ton – 51 cubic yards with heap – 3 compartment overhead storage bins.

- Bolt on extension legs between overhead bins and aggregate batcher.
- 10 yards of material may be discharged from any two (2) compartments. (On 4-compartment bin consult factory).
- Hinged fold down sides for easy transportation. (Note: It may be to customer's advantage to have bins welded up to save crane time and labor in the field.)
- Two clam gates on each compartment. Gear type gates with six (6) $\frac{3}{4}$ " teeth on each gear.
- Each gate has permanently lubricated bronze bushings.
- 5" diameter air cylinder with electric solenoid.
- Heap plates.
- $\frac{1}{4}$ " abrasive resistant steel (400 brinnell) welded immediately above each gate (approx 12" tall.)

Optional: A/R Liners available



Aggregate Batcher

- 12 yard with 40,000 LBS lever system with one "s" type load cell and 0-10 VDC digital readout.
- 580 Cu. Ft. capacity at water level.
- Two discharge openings in batcher with one (1) extra long double acting clamshell gates, under both openings. Gear type gate with six (6) $\frac{3}{4}$ " teeth per gate. Gate has permanently lubricated bronze bushing. Gate will be actuated by two 5" air cylinders, with flow restrictors mounted in solenoid.

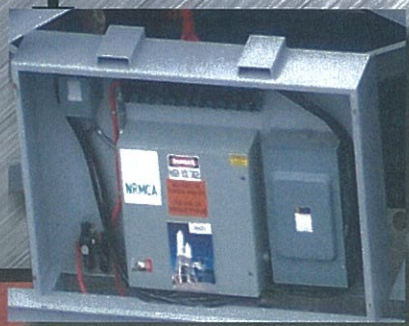
Transfer Conveyor



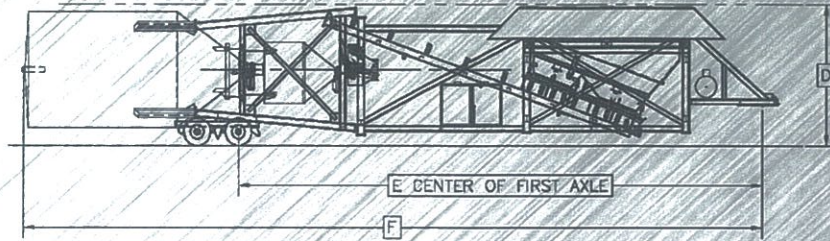
- 30" x 33'6" channel frame transfer conveyor.
- 15-HP 3-phase TEFC motor 230/460 volts.
- Stephens conveyors are rated by the CPMB (Concrete Plant Manufacturers Bureau) for accurate discharge rates.
- Optional: 36 Transfer Conveyor available



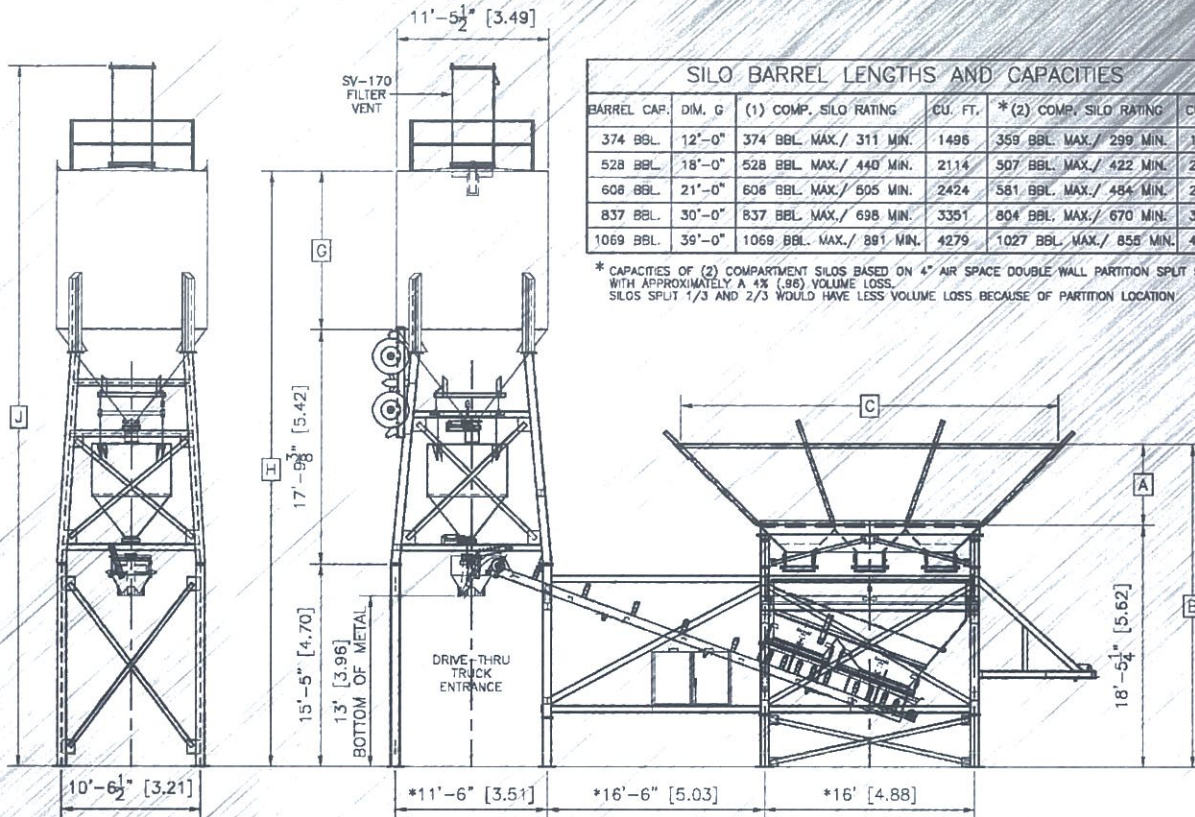
AIR COMPRESSOR
Standard: 15 HP 240 Gallon
Optional: 20 HP and Rotary Compressors



ELECTRICAL PANEL
200 AMP Power Panel
Optional: 400 and 600 AMP



THOROUGHbred - TOWING POSITION



70 TON - 200 TON

THOROUGHbred PORTABLE CONCRETE PLANT DIMENSIONS CHART

DESCRIPTION	UNITS	A	B	C	D	E	F	G	H	J	CAPACITIES	
											CU YARDS	CU METERS
70 TON AGG. BIN	STD.	3'-1 1/2"	21'-6 3/4"	22'-8 3/4"	14'-0"	---	---	---	---	---	---	51.85
	METRIC	.95 M	6.57 M	6.93 M	4.27 M	---	---	---	---	---	---	39.6
100 TON AGG. BIN	STD.	5'-1 1/2"	23'-6 3/4"	26'-8 3/4"	14'-0"	---	---	---	---	---	---	74.07
	METRIC	1.56 M	7.18 M	8.15 M	4.27 M	---	---	---	---	---	---	56.0
120 TON AGG. BIN	STD.	6'-1 1/2"	24'-6 3/4"	28'-8 3/4"	14'-0"	---	---	---	---	---	---	89.8
	METRIC	1.85 M	7.49 M	8.76 M	4.27 M	---	---	---	---	---	---	67.8
150 TON AGG. BIN	STD.	8'-2"	26'-7 1/4"	28'-0"	14'-0"	---	---	---	---	---	---	111.11
	METRIC	2.49 M	8.11 M	8.53 M	4.27 M	---	---	---	---	---	---	84.9
200 TON AGG. BIN	STD.	11'-4"	29'-9 1/4"	28'-0"	14'-0"	---	---	---	---	---	---	148.1
	METRIC	3.45 M	9.07 M	8.53 M	4.27 M	---	---	---	---	---	---	113.2
374 BARREL CEM. SILO	STD.	---	---	---	---	52'-5 3/8"	73'-11 3/8"	12'-0"	45'-2 3/8"	53'-1 3/4"	---	58.4
	METRIC	---	---	---	---	15.99 M	22.54 M	3.66 M	13.78 M	16.2 M	---	42.3
528 BARREL CEM. SILO	STD.	---	---	---	---	52'-5 3/8"	76'-11 3/8"	18'-0"	51'-2 3/8"	59'-1 3/4"	---	78.2
	METRIC	---	---	---	---	15.99 M	23.45 M	5.49 M	15.61 M	18.03 M	---	59.7
606 BARREL CEM. SILO	STD.	---	---	---	---	SEE NOTE A	SEE NOTE A	21'-0"	54'-2 3/8"	62'-1 3/4"	---	89.7
	METRIC	---	---	---	---	---	---	6.40 M	16.52 M	18.94 M	---	68.5
837 BARREL CEM. SILO	STD.	---	---	---	---	SEE NOTE A	SEE NOTE A	30'-0"	63'-2 3/8"	71'-1 3/4"	---	124.0
	METRIC	---	---	---	---	---	---	9.14 M	19.26 M	21.69 M	---	94.8
1069 BARREL CEM. SILO	STD.	---	---	---	---	SEE NOTE A	SEE NOTE A	39'-0"	72'-2 3/8"	80'-1 3/4"	---	158.3
	METRIC	---	---	---	---	---	---	11.89 M	22.01 M	24.43 M	---	121.0

NOTE A: MAY REQUIRE SPECIAL TWO PIECE DESIGN - PLEASE CONSULT FACTORY.

NOTE: TO CONTINUALLY UPDATE AND IMPROVE OUR PRODUCT WE RESERVE THE RIGHT TO AMMEND OUR STANDARD SPECIFICATIONS WITHOUT NOTICE.