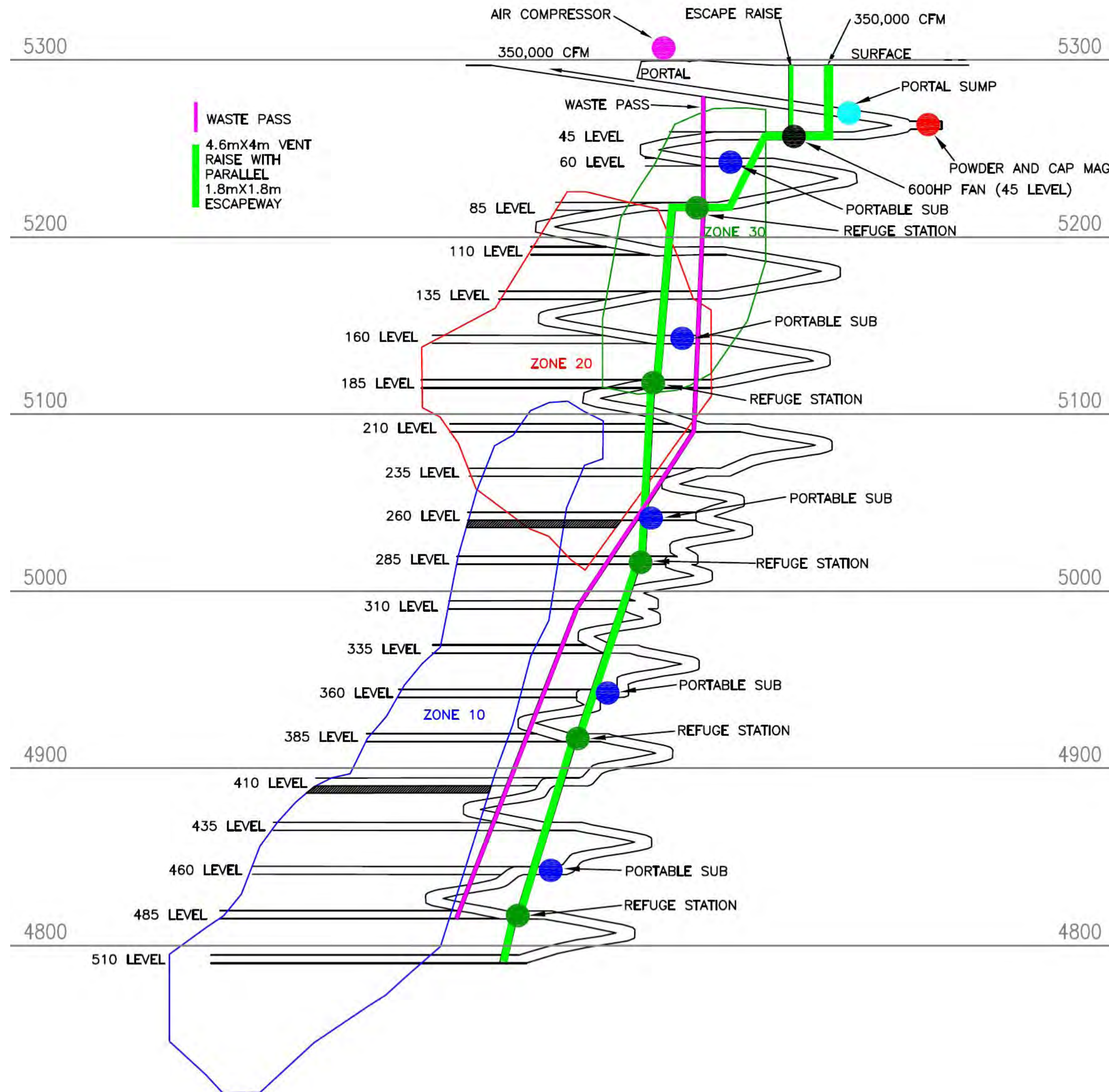


Reed AEP Longitudinal Section

SECTION LOOKING NORTH-EAST



Environmental Studies

Physical

- Topography
- Geology
- Soil
- Air
- Noise and Vibration
- Climate
- Groundwater



Aquatic

- Surface Water Hydrology
- Bathymetry
- Surface Water Quality
- Sediment Quality
- Aquatic Invertebrates
- Fish and Fish Habitat



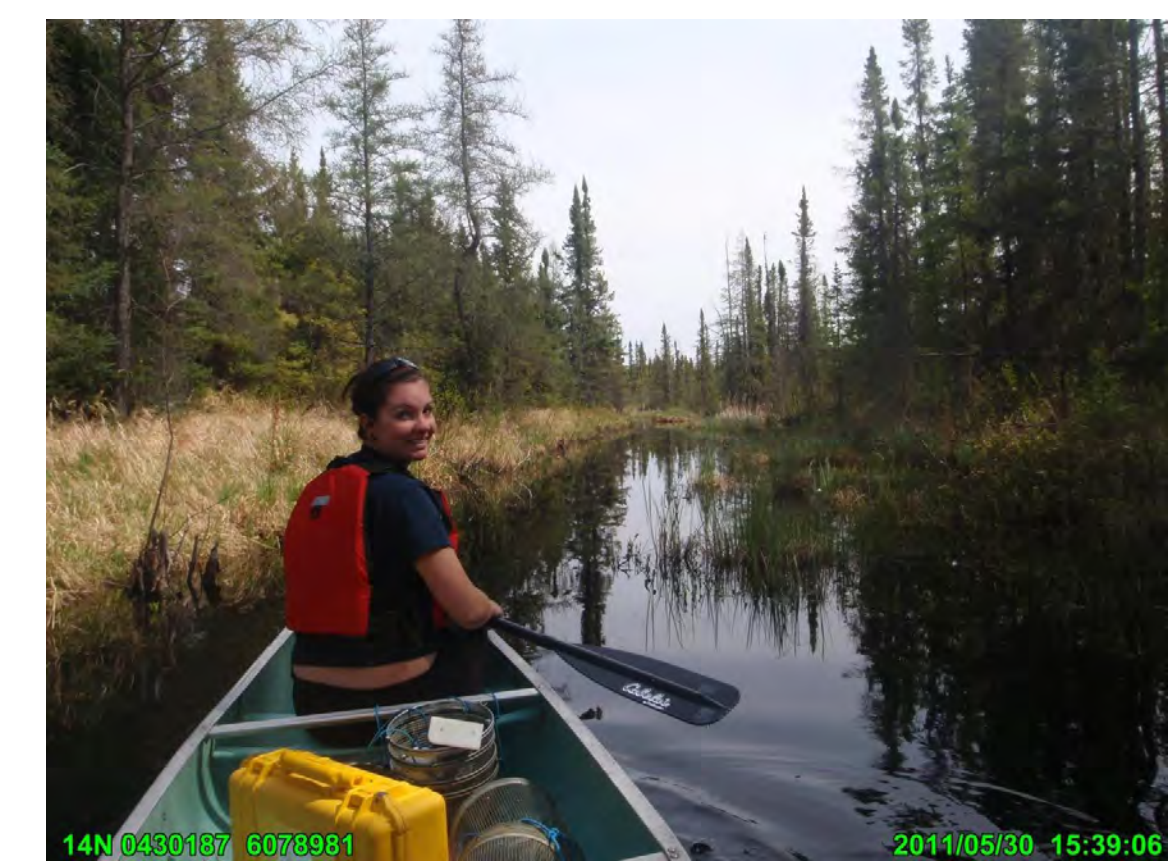
Terrestrial

- Flora and Fauna

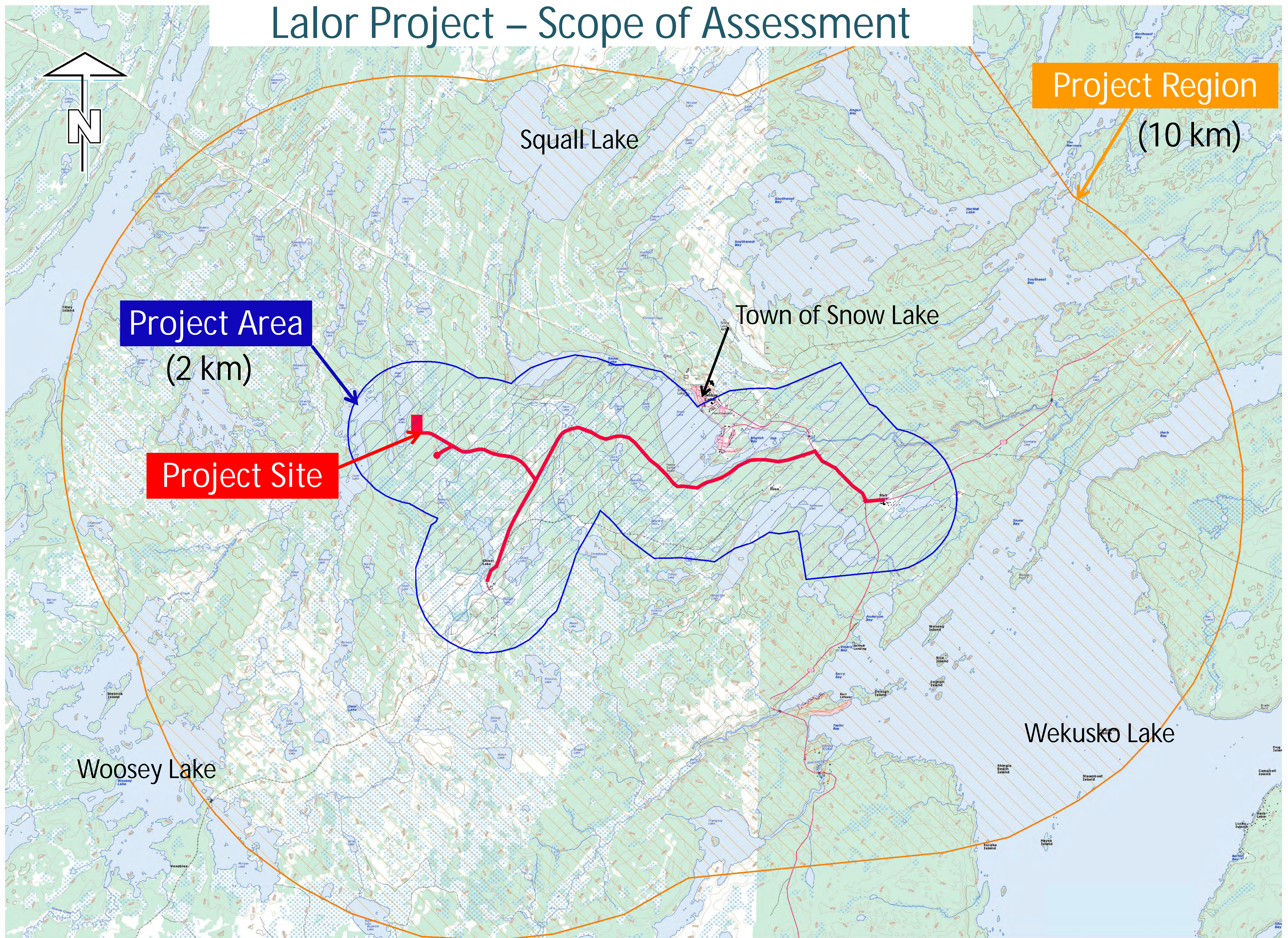


Socio-Economic

- Heritage Resources
- Economy
- Recreation
- Resource Use
- Aesthetics
- Health and Safety



Lalor Project – Scope of Assessment



Project Region

(10 km)

Project Area

(2 km)

Project Site

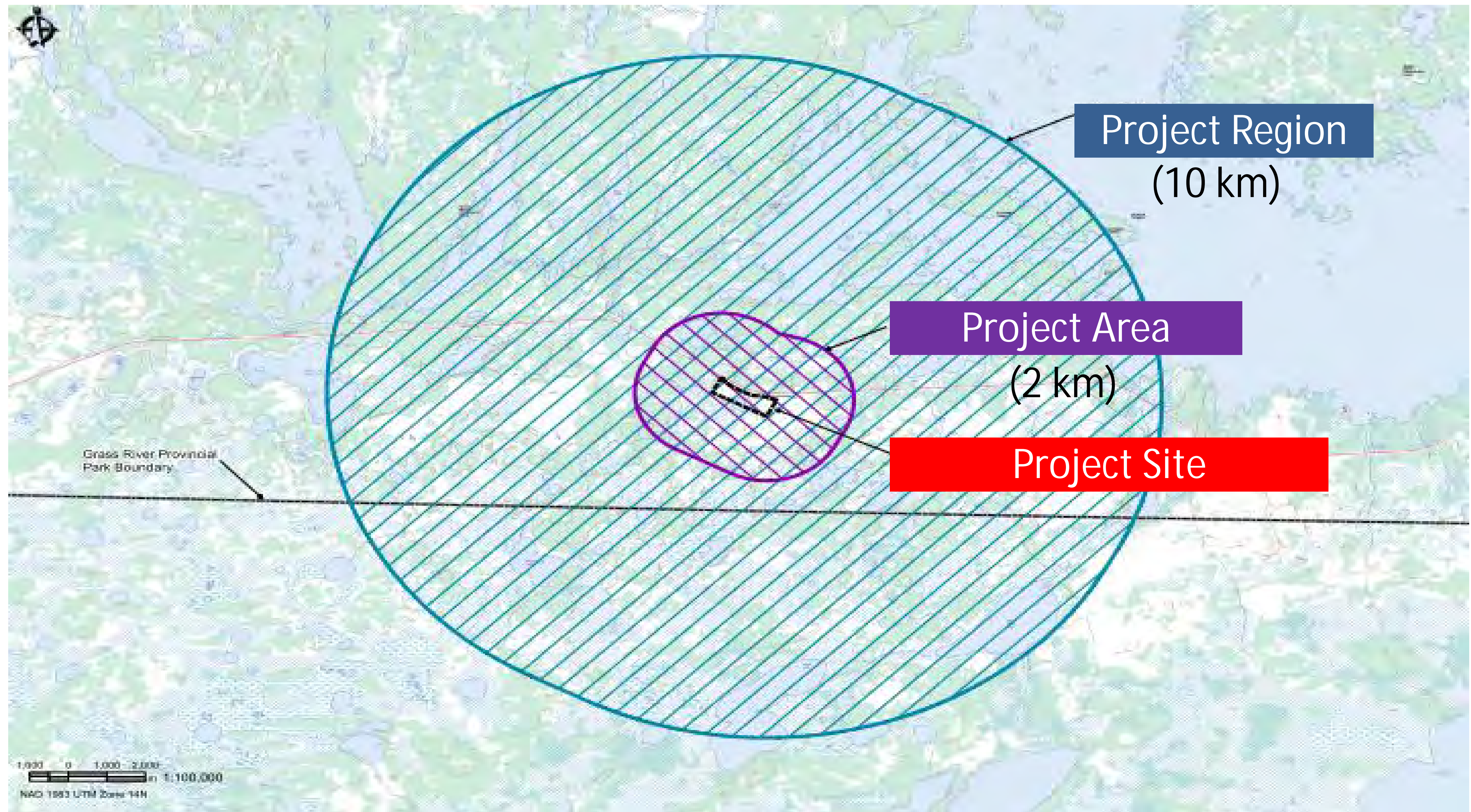
Squall Lake

Town of Snow Lake

Wekusko Lake

Woosey Lake

Reed Copper Project – Scope of Assessment



Summary of Findings

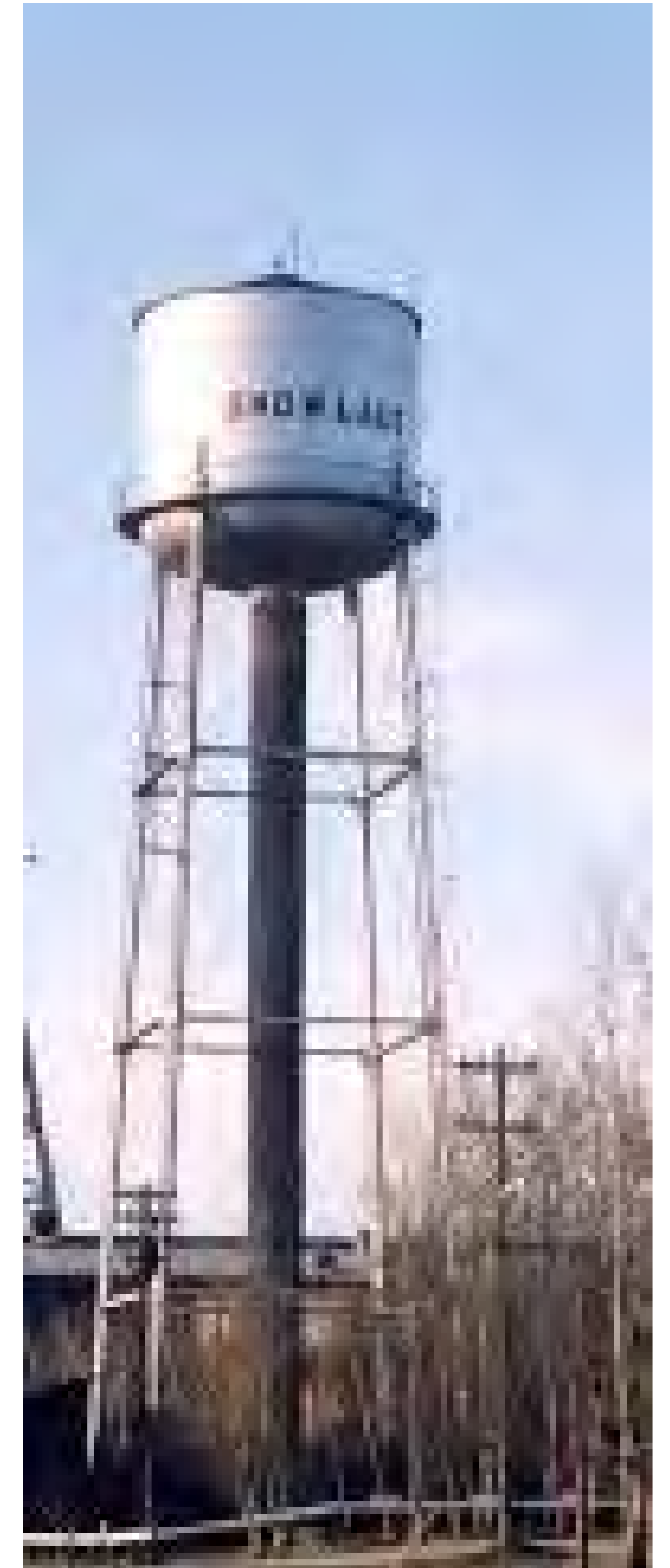
Mines have been planned so there will be no impact to:

- Surface Water and Sediments
- Aquatic Resources
- Terrestrial Resources
- Groundwater
- Heritage Resources
- Resource Use



Economic Benefits

- Lalor Mine and concentrator will employ approximately 430 employees at full production.
- Reed Mine will employ 88 employees at full production.
- Concentrate produced at each mine will be processed in Flin Flon, providing additional economic benefit
- Northern contractors, supply services and other businesses will have opportunities.



Closure Planning

- Closure plans for Lalor and Reed will be updated
- Manitoba keeps Hudbay's financial assurance to make sure closure will be paid for.
- Hudbay has successfully completed reclamation on many mining operations across Canada, with several of these sites located in the Snow Lake region
- The area will be returned, to the extent possible, to its natural state



Konuto Lake Mine
(Post Closure)

Comments and Questions

AECOM - Clifton Samoiloff

Phone: 204-477-5381

email: Cliff.Samoiloff@aecom.com

Hudbay – Stephen West

Phone: 204-687-2229

email: steph.west@hudsonbayminerals.com

Hudbay – Jay Cooper

Phone: 204-687-2667

email: jay.cooper@hudsonbayminerals.com