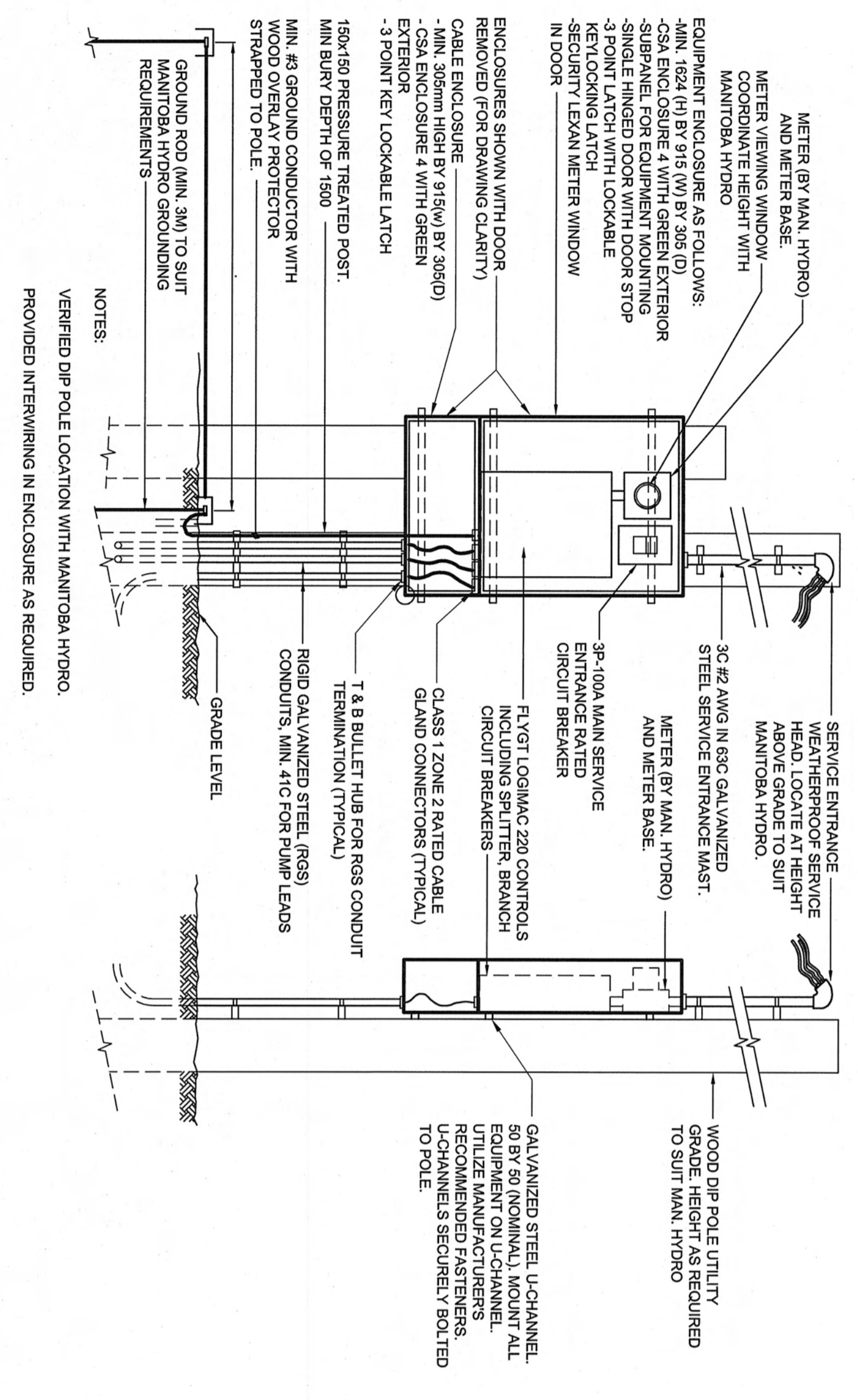
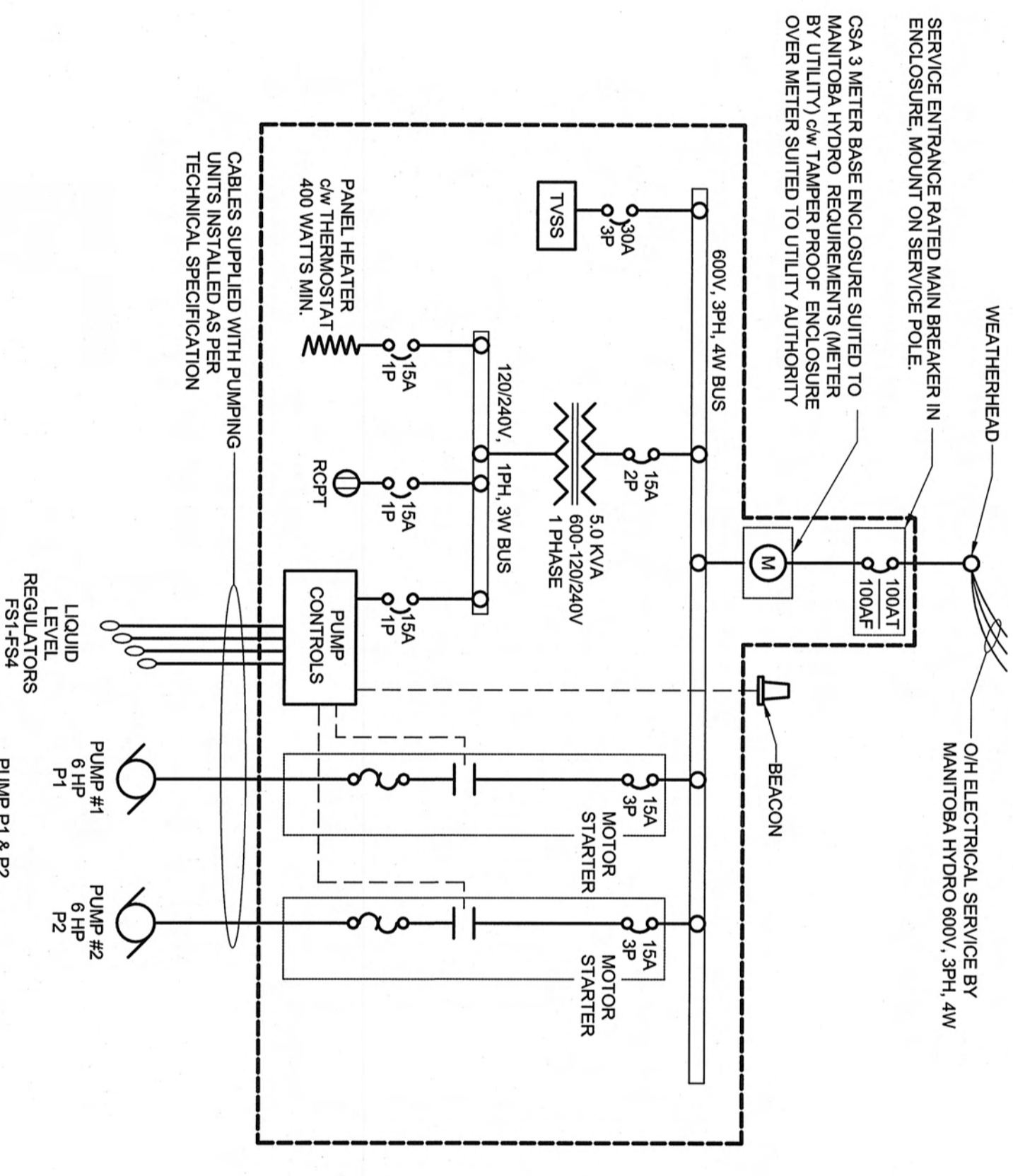


CODE	DRAWING NUMBER	REFERENCE DRAWINGS	DRAWING TITLE

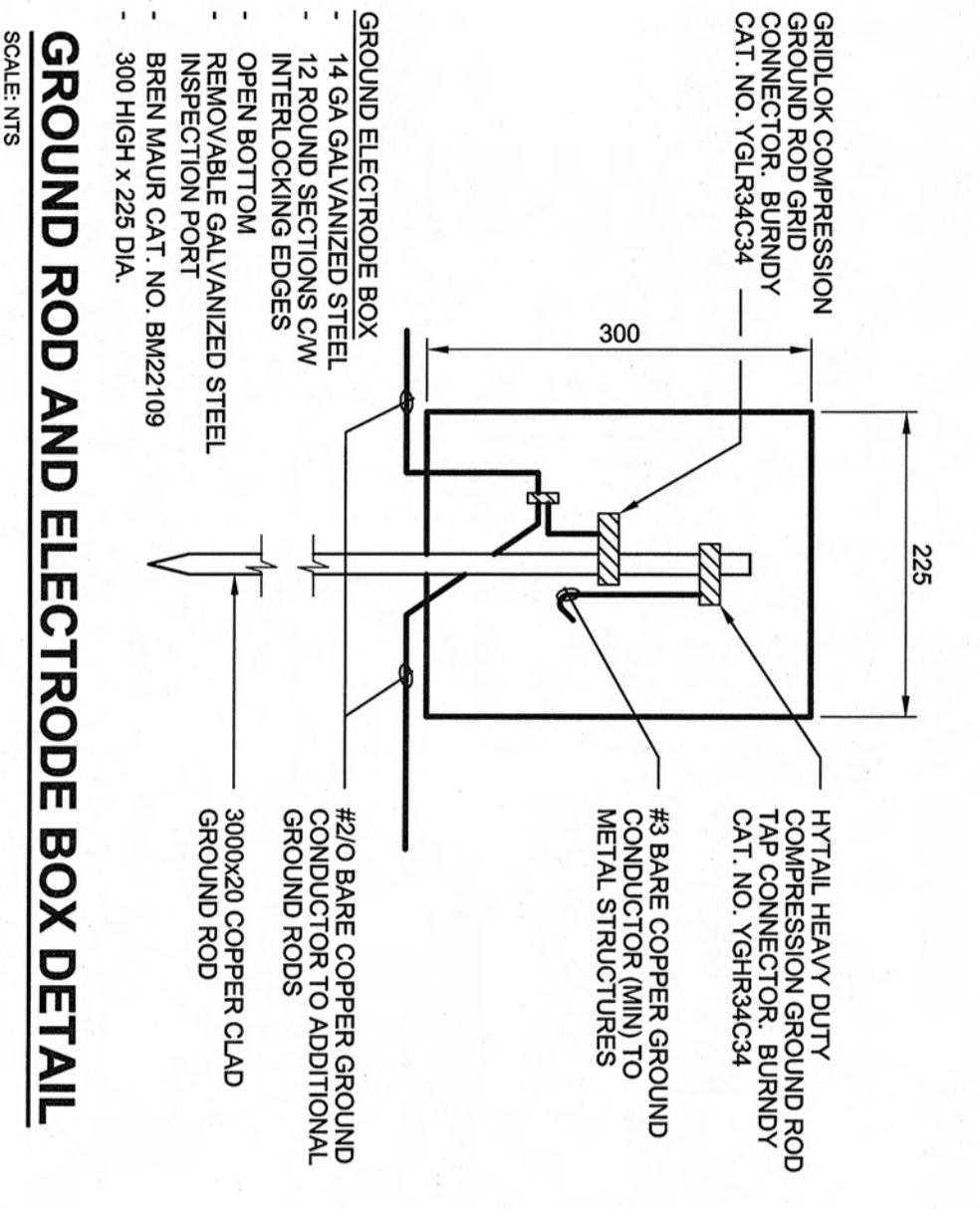
- ELECTRICAL NOTES:**
- COORDINATE WITH MANITOBA HYDRO FOR SERVICE CONNECTIONS AND METERING REQUIREMENTS. EXTEND SERVICE CONDUIT AND CONDUCTORS TO CONNECTION. PROVIDE SUITABLE MOUNTING HARDWARE.
  - PUMP POWER AND CONTROL CABLES BY DIVISION 1100. TERMINATE IN PUMP CONTROL PANELS. PROVIDE CONDUIT SLEEVES THROUGH MANHOLE TOP SLAB.
  - PUMP CONTROL SHALL BE COMPLETE FLYGT LOGICAC 220 220 519 1000. POWER AND CONTROL CONDUCTORS IN CONTROL PANELS.
  - ELECTRICAL EQUIPMENT, WIRING AND CONNECTIONS IN SEWAGE PUMPING STATIONS TO BE RATED FOR CLASS 1 DIVISION 1, AND CATEGORY 2 CORROSIVE ENVIRONMENT.
  - PROVIDE A RED ALARM STROBE LIGHT BEACON. EDWARDS CAT NO. SACR-NS. BEACON SHALL BE COMPLETE FLYGT LOGICAC 220 220 519 1000. TERMINATE IN SEWAGE PUMP CONTROL PANEL WITH 2M12, 12C.
  - PUMP CONTROL PANEL SHALL CONTAIN INTRINSICALLY SAFE BARRIERS FOR FLOAT SWITCHES.
  - PROVIDE 300mm ADDITIONAL EXCESS CABLE IN CABLE TROUGH.



**ELECTRICAL POWER SERVICE DIP POLE DETAIL FOR LIFT STATION**  
SCALE: 1/8"



**LIFT STATION - ELECTRICAL SCHEMATIC DIAGRAM**  
SCALE: 1/8"  
POWER 0909P 1



**GROUND ROD AND ELECTRODE BOX DETAIL**  
SCALE: 1/8"

DATE	2012-12-14	ISSUED FOR 87% DESIGN
REV		
BY	KJC	APP
CHECKED	AS NOTED	
DESIGNED		
DATE		
<p><b>LAURIE RIVER GENERATING STATIONS 1 &amp; 2</b></p> <p><b>MAIN CAMP</b></p> <p><b>SEWER AND WATER UPGRADES</b></p> <p><b>SEWAGE LIFT STATION</b></p> <p><b>ELECTRICAL DETAILS</b></p>		
PROJECT NUMBER	9-99999-NN-99999-9999	SHEET 0001
DATE	0A	0A

**METRIC**  
WHOLE NUMBERS AND FRACTIONS IN MILLIMETERS  
DECIMAL NUMBERS IN METERS

**AECOM**

This Drawing Prepared By: AECOM

This document is the exclusive property of AECOM. It is not to be distributed, copied, or used in any way without the written consent of AECOM. The information contained herein is confidential and proprietary to AECOM.