

Appendix B

Terrestrial Environment -
Photographs and Tables



Photo - 01. Old clear-cut area in Project area.



Photo - 02. Mature upland stand in Project area

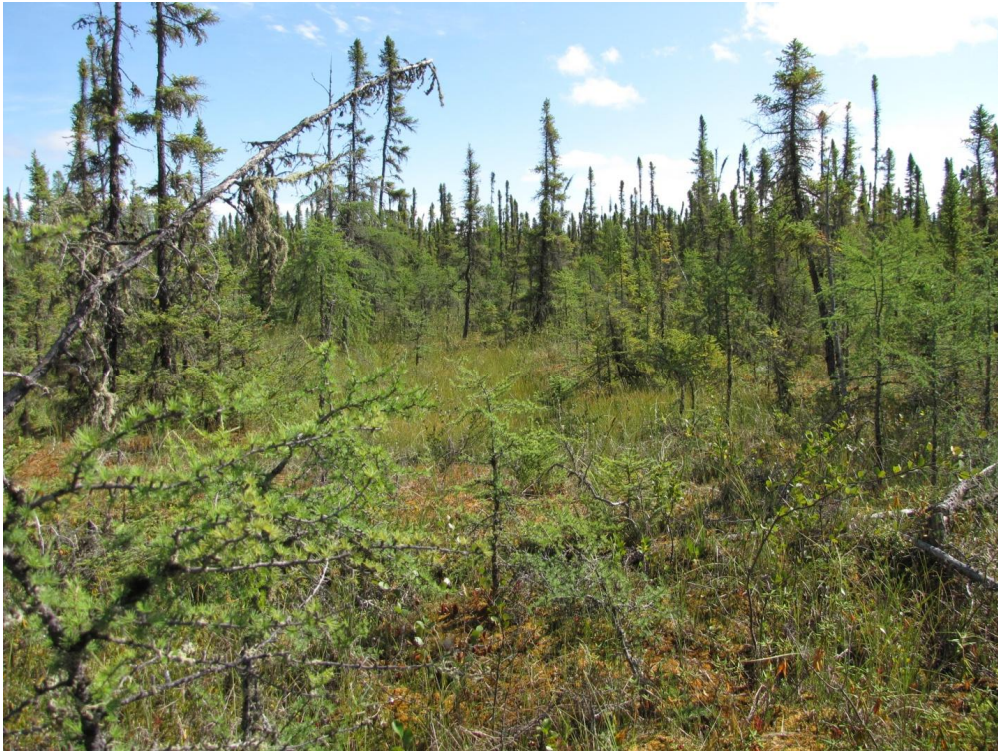


Photo - 03. Wet fen south of the Project area



Photo - 04. Pitcher plants in wet fen area



Photo - 05. Drill road to Unnamed Lake 3 ↑



Photo - 06. Drill road to shore of Unnamed Lake 3 ↑



Photo - 07. Treed bog near shore of Unnamed Lake 2 ↑



Photo - 08. Wet Fen and Meadow north of Unnamed Lake 2 looking N ↑



Photo - 09. Clearing used for Temporary Drill Camp ↑



Photo - 10. Communication Tower in Clear-Cut Area (Looking South) ↑



Photo - 11. Asphalt pad from former structure at west end of site ↑



Photo - 12. Clear-Cut Area (foreground) and Mature Mixed Wood Forest Area (background) ↑



Photo - 13. Temporary Drill Camp with Unnamed Lake 2 in Background (Looking South)↑



Photo - 14. Unnamed Lake 2 (Looking South)↑



Photo - 15. Understory of Clear-Cut Area ↑



Photo - 16. Limestone Den in Clear-Cut Area ↑



Photo - 17. Grassy Meadow in Mature Mixed Wood Forest Area ↑



Photo - 18. Mature aspen in Mature Mixed Wood Forest Area ↑



Photo - 19. Old growth forest in Mature Mixed Wood Forest Area ↑



Photo - 20. Limestone Bedrock in Mature Mixed Wood Forest Area ↑



Photo - 21. Regrowth on access roads in Clear-Cut Area ↑



Photo - 22. Garter Snake on access road in Clear Cut Area ↑

Table – 01: Plant species recorded in Clear-Cut Area

Overstory Species
White Spruce (<i>Picea glauca</i>)
Balsam Poplar (<i>Populus balsamifera</i>)
Paper Birch (<i>Betula papyrifera</i>)
Trembling Leaf Aspen (<i>Populus tremuloides</i>)
Shrub Species
Pin Cherry (<i>Prunus pensylvanica</i>)
Saskatoon (<i>Amelanchier alnifolia</i>)
Chokecherry (<i>Prunus virginiana</i>)
Ground Cover Species
American Vetch (<i>Vicia americana</i>)
Arrow-Leaved Coltsfoot (<i>Petasites sagittatus</i>)
Canada Anemone (<i>Anemone canadensis</i>)
Common Harebell (<i>Campanula rotundifolia</i>)
Drooping Wood-Reed (<i>Cinna latifolia</i>)
Fairybells (<i>Disporum trachycarpum</i>)
Fern (<i>Matteuccia</i> sp.)
Foxtail Barley (<i>Hordeum jubatum</i>)
Goldenrod (<i>Solidago canadensis</i>)
Gooseberry (<i>Ribes oxycanthoides</i>)
Hairy Wild Rye (<i>Elymus innovatus</i>)
Long-leaved Chickweed (<i>Stellaria longifolia</i>)
Meadow Rue (<i>Thalictrum aquilegifolium</i>)
Northern Bed Straw (<i>Gallium boreale</i>)
Pink Corydalis (<i>Corydalis sempervirens</i>)
Raspberry (<i>Rubus idaeus</i>)
Red-Osier Dogwood (<i>Cornus stolonifera</i>)
Rose (<i>Rosa acicularis</i>)
Slender Wheat Grass (<i>Agropyron trachycaulum</i>)
Snowberry (<i>Symphoricarpos albus</i>)
Tall Bluebells (<i>Mertensia paniculata</i>)
Yarrow (<i>Achillea millefolium</i>)
Wetland Species
Marsh Cinquefoil (<i>Potentilla palustris</i>)
Sedge (<i>Carex</i> sp.)
Slough Grass (<i>Beckmania syzigachne</i>)
Wild Mint (<i>Mentha arvensis</i>)
Moss and Lichen species
Awned hair cap moss (<i>Polytrichum piliferum</i>)
Tufted moss (<i>Aulacomium palustre</i>)
Wavy Dicranum (<i>Dicranum undulatum</i>)
Invasive Species
Canada Thistle (<i>Cirsium arvense</i>)
Perennial Sow Thistle (<i>Sonchus arvensis</i>)
Quack Grass (<i>Agropyron repens</i>)
Red Clover (<i>Trifolium pretense</i>)
Stinging Nettle (<i>Urtica dioica</i>)

Table – 02: Plant species recorded in the Mature Upland Area

Overstory Species
Balsam Fir (<i>Abies balsamea</i>)
Balsam Poplar (<i>Populus balsamifera</i>)
Black Spruce (<i>Picea mariana</i>)
Bur Oak (<i>Quercus macrocarpa</i>)
Jack Pine (<i>Pinus banksiana</i>)
Larch (<i>Larix decidua</i>)
Paper Birch (<i>Betula papyrifera</i>)
Trembling Leaf Aspen (<i>Populus tremuloides</i>)
White Spruce (<i>Picea glauca</i>)
Shrub Species
Pin Cherry (<i>Prunus pensylvanica</i>)
Saskatoon (<i>Amelanchier alnifolia</i>)
Willow (<i>Salix</i> sp.)
Chokecherry (<i>Prunus virginiana</i>)
Ground Cover Species
American Vetch (<i>Vicia americana</i>)
Arrow-Leaved Coltsfoot (<i>Petasites sagittatus</i>)
Bearberry (<i>Arctostaphylos uva-ursi</i>)
Blunt-Leaved Bog-Orchid (<i>Habenaria obtusata</i>)
Bog Cranberry (<i>Vaccinium vitis-idaea</i>)
Bunchberry (<i>Cornus canadensis</i>)
Canada Anemone (<i>Anemone canadensis</i>)
Canada Buffaloberry (<i>Shepherdia canadensis</i>)
Clintonia (<i>Clintonia borealis</i>)
Cloudberry (<i>Rubus chamaemorus</i>)
Common Harebell (<i>Campanula rotundifolia</i>)
Drooping Wood-Reed (<i>Cinna latifolia</i>)
Dwarf Bilberry (<i>Vaccinium caespitosum</i>)
Fairybells (<i>Disporum trachycarpum</i>)
Fern (<i>Matteuccia</i> sp.)
Foxtail Barley (<i>Hordeum jubatum</i>)
Goldenrod (<i>Solidago canadensis</i>)
Gooseberry (<i>Ribes oxycanthoides</i>)
Graceful Potentilla (<i>Potentilla gracilis</i>)
Hairy Wild Rye (<i>Elymus innovatus</i>)
Highbush Cranberry (<i>Viburnum edule</i>)
Horsetail (<i>Equisetum arvense</i>)
Labrador Tea (<i>Ledum groenlandicum</i>)
Leatherleaf (<i>Chamaedaphne calyculata</i>)
Lily of the Valley (<i>Maianthemum canadense</i>)
Ground Cover Species (continued)
Meadow Rue (<i>Thalictrum aquilegifolium</i>)
Moccasin Flower (<i>Cypripedium acaule</i>)
Northern Bed Straw (<i>Gallium boreale</i>)
Northern Bog-Laurel (<i>Kalmia polifolia</i>)
Northern Star Flower (<i>Trientalis borealis</i>)
Pink Corydalis (<i>Corydalis sempervirens</i>)
Raspberry (<i>Rubus idaeus</i>)
Red-Osier Dogwood (<i>Cornus stolonifera</i>)
Richardson's Alumroot (<i>Heuchera richardsonii</i>)
Rock Cress (<i>Arabis</i> sp.)
Rose (<i>Rosa acicularis</i>)
Rough Cinquefoil (<i>Potentilla norvegica</i>)
Sarsaparilla (<i>Aralia nudicaulis</i>)
Slender Wheat Grass (<i>Agropyron trachycaulum</i>)
Small Bog Cranberry (<i>Oxycoccus microcarpus</i>)
Small-Leaved Pussetoes (<i>Antennaria microphylla</i>)
Snowberry (<i>Symphoricarpos albus</i>)
Stiff Club Moss (<i>Lycopodium annotinum</i>)
Strawberry (<i>Fragaria virginiana</i>)
Tall Bluebells (<i>Mertensia paniculata</i>)

Three-Leaved False Solomon's-Seal (<i>Smilacina trifolia</i>)
Three-Toothed Cinquefoil (<i>Potentilla tridentata</i>)
Twinflower (<i>Linnaea borealis</i>)
Velvet-Leaved Blueberry (<i>Vaccinium myrtilloides</i>)
Wintergreen (<i>Pyrola asarifolia</i>)
Yarrow (<i>Achillea millefolium</i>)
Wetland Species
Bluejoint (<i>Calamagrostis canadensis</i>)
Common Cattail (<i>Typha latifolia</i>)
Common Reed Grass (<i>Phragmites australis</i>)
Marsh Cinquefoil (<i>Potentilla palustris</i>)
Reed Canary Grass (<i>Phalaris arundinacea</i>)
Sedge (<i>Carex sp.</i>)
Slough Grass (<i>Beckmania syzigachne</i>)
Small-Flowered Bulrush (<i>Scirpus microcarpus</i>)
Tall Cotton-Grass (<i>Eriophorum angustifolium</i>)
Wild Mint (<i>Mentha arvensis</i>)
Moss and Lichen Species
Awned hair cap moss (<i>Polytrichum piliferum</i>)
Cladonia (<i>Cladonia sp.</i>)
Sphagnum Moss (<i>Sphagnum sp.</i>)
Tufted moss (<i>Aulacomium palustre</i>)
Wavy Dicranum (<i>Dicranum undulatum</i>)
Invasive Species
Canada Thistle (<i>Cirsium arvense</i>)
Perennial Sow Thistle (<i>Sonchus arvensis</i>)
Quack Grass (<i>Agropyron repens</i>)
Red Clover (<i>Trifolium pretense</i>)
Stinging Nettle (<i>Urtica dioica</i>)

Table – 03: Plant species recorded in the Wet Fen Area

Overstory Species
Larch (<i>Larix decidua</i>)
Shrub Species
Bog Birch (<i>Betula glandulosa</i>)
Green Alder (<i>Alnus crispa</i>)
Ground Cover Species
Bearberry (<i>Arctostaphylos uva-ursi</i>)
Bog Cranberry (<i>Vaccinium vitis-idaea</i>)
Bunchberry (<i>Cornus canadensis</i>)
Labrador Tea (<i>Ledum groenlandicum</i>)
Pitcher Plant (<i>Sarracenia purpurea</i>)
Wetland Species
Marsh Cinquefoil (<i>Potentilla palustris</i>)
Sedge (<i>Carex sp.</i>)
Moss and Lichen Species
Awned hair cap moss (<i>Polytrichum piliferum</i>)

**Table – 04: Species listed and ranked by Manitoba Conservation Data Centre
in the Mid-Boreal Lowland and Churchill River Upland Ecoregions**

Mid-Boreal Lowland			
Animal Assemblage			
Bat Colony		GNR	SNR
Snake Hibernaculum		GNR	SNR
Invertebrate Animal			
<i>Strophitus undulatus</i>		G5	SNR
Terrestrial Community - Other Classification			
Boreal Inland Alkaline Cliff Sparse Vegetation		GNR	S2
<i>Distichlis stricta</i> - <i>Hordeum jubatum</i> - <i>Puccinellia nuttalliana</i> - <i>Plantago maritime</i> (saline herbaceous vegetation)	Alkali Grass-Wild Barley-Nuttall's Salt Meadow Grass- Seaside Plantain (Saline Herbaceous Vegetation)	GNR	S2
Inland Lake cobble-gravel shore sparse Vegetation		GNR	S3
<i>Thuja occidentalis</i> -(<i>Picea mariana</i> , <i>Abies balsamea</i>)/ <i>Alnus rugosa</i> (wetland forest)	Eastern White Cedar-(Black Spruce, Balsam Fir)/Speckled Alder (Wetland Forest)	GNR	S2
Vascular Plant			
<i>Arethusa bulbosa</i>	Arethusa	G4	S2
<i>Botrychium multifidum</i>	Leathery Grape-fern	G5	S3
<i>Calopogon tuberosus</i>	Swamp-pink	G5	S2
<i>Carex communis</i>	Fibrous-rooted Sedge	G5	SNA
<i>Carex flava</i>	Yellow Sedge	G5	S2S3
<i>Carex garberi</i>	Elk Sedge	G5	S1?
<i>Carex hystericina</i>	Porcupine Sedge	G5	S3?
<i>Carex pedunculata</i>	Stalked Sedge	G5	S3?
<i>Carex projecta</i>	Necklace Sedge	G5	S2?
<i>Carex vulpinoidea</i>	Fox Sedge	G5	S3?
<i>Cypripedium arietinum</i>	Ram's Head Lady's-slipper	G3	S2S3
<i>Drosera anglica</i>	Oblong-leaved Sundew	G5	S3
<i>Drosera linearis</i>	Slender-leaved Sundew	G4	S2
<i>Dulichium arundinaceum</i>	Three-way Sedge	G5	S2
<i>Eleocharis engelmannii</i>	Engelmann's Spike-rush	G4G5Q	S1
<i>Eriophorum callitrix</i>	Beautiful Cotton-grass	G5	S2
<i>Galium aparine</i>	Cleavers	G5	SU
<i>Goodyera tessellata</i>	Tesselated Rattlesnake Plantain	G5	S2
<i>Gymnocarpium jessoense</i>	Northern Oak Fern	G5	S3S4
<i>Gymnocarpium robertianum</i>	Limestone Oak Fern	G5	S1
<i>Heteranthera dubia</i>	Water Star-grass	G5	S2
<i>Leucophysalis grandiflora</i>	Large White-flowered Ground-cherry	G4?	S3
<i>Liparis loeselii</i>	Yellow Twayblade	G5	S3S4
<i>Listera auriculata</i>	Auricled Twayblade	G3G4	S1
<i>Malaxis monophyllos</i>	White Adder's-mouth	G5	S2?
<i>Malaxis unifolia</i>	Green Adder's-mouth	G5	S2?
<i>Nymphaea odorata</i>	Fragrant Water-lily	G5	S2
<i>Onoclea sensibilis</i>	Sensitive Fern	G5	S3S4
<i>Parietaria pensylvanica</i>	American Pellitory	G5	S4
<i>Pellaea glabella</i> ssp. <i>occidentalis</i>	Cliff-brake	G5T4	S2
<i>Plantago maritima</i>	Seaside Plantain	G5	S2
<i>Platanthera lacera</i>	Fringed Orchid	G5	S2
<i>Platanthera orbiculata</i>	Round-leaved Bog Orchid	G5	S3
<i>Potamogeton strictifolius</i>	Straightleaf Pondweed	G5	S3
<i>Pyrola americana</i>	Round-leaved Pyrola	G5	S2
<i>Rhynchospora alba</i>	White Beakrush	G5	S3?
<i>Rhynchospora capillacea</i>	Horned Beakrush	G4	S2
<i>Taxus canadensis</i>	Canada Yew	G5	S3
<i>Thalictrum sparsiflorum</i>	Few-flowered Meadow-rue	G5	S2S3
<i>Vaccinium caespitosum</i>	Dwarf Bilberry	G5	S2
<i>Viola selkirkii</i>	Long-spurred Violet	G5?	S2

<i>Woodsia glabella</i>	Smooth Woodsia	G5	S2
Vertebrate Animal			
<i>Aechmophorus occidentalis</i>	Western Grebe	G5	S4B
<i>Ardea herodias</i>	Great Blue Heron	G5	S4S5B
<i>Aythya marila</i>	Greater Scaup	G5	S5B
<i>Charadrius melodus</i>	Piping Plover	G3	S1B
<i>Coregonus zenithicus</i>	Shortjaw Cisco	G3	S3
<i>Haliaeetus leucocephalus</i>	Bald Eagle	G5	S4S5B
<i>Ichthyomyzon castaneus</i>	Chestnut Lamprey	G4	S3S4
<i>Macrhybopsis storeriana</i>	Silver Chub	G5	S3
<i>Myotis lucifugus</i>	Little Brown Myotis	G5	S2N,S5B
<i>Nycticorax nycticorax</i>	Black-crowned Night-heron	G5	S3S4B
<i>Pelecanus erythrorhynchos</i>	American White Pelican	G3	S3S4B
<i>Phalacrocorax auritus</i>	Double-crested Cormorant	G5	S5B
<i>Rangifer tarandus caribou</i>	Caribou	G5T4	S4
<i>Sterna caspia</i>	Caspian Tern	G5	S3S4B
<i>Sterna forsteri</i>	Forster's Tern	G5	S4B
<i>Strix varia</i>	Barred Owl	G5	S3S4
Churchill River Upland			
Fungus			
<i>Leptogium rivulare</i>	Flooded jellyskin	G3G5	SNR
Vascular Plant			
<i>Carex michauxiana</i>	Long-fruited Sedge	G5	S2
<i>Carex oligosperma</i>	Few-fruited Sedge	G5?	S3?
<i>Carex pauciflora</i>	Few-flowered Sedge	G5	S3
<i>Dryopteris fragrans</i>	Fragrant Shield Fern	G5	S3S4
<i>Gymnocarpium jessoense</i>	Northern Oak Fern	G5	S3S4
<i>Gymnocarpium robertianum</i>	Limestone Oak Fern	G5	S1
<i>Juncus stygius ssp. americanus</i>	Moor Rush	G5T5	S1?
<i>Nymphaea tetragona</i>	Small Water-lily	G5	S2
<i>Platanthera orbiculata</i>	Round-leaved Bog Orchid	G5	S3
<i>Rhynchospora alba</i>	White Beakrush	G5	S3?
<i>Woodsia alpina</i>	Northern Woodsia	G4	S1
<i>Woodsia glabella</i>	Smooth Woodsia	G5	S2
<i>Woodsia oregana ssp. cathcartiana</i>		G5T5	S1
Vertebrate Animal			
<i>Coregonus zenithicus</i>	Shortjaw Cisco	G3	S3
<i>Rangifer tarandus caribou</i>	Caribou	G5T4	S4

Table – 05: MBCDC Rank, Heritage, Sub-Rank and Qualifier Codes

Category	Code	Definition
Rank	1	Very rare throughout its range or in the province (5 or fewer occurrences, or very few remaining individuals). May be especially vulnerable to extirpation.
	2	Rare throughout its range or in the province (6 to 20 occurrences). May be vulnerable to extirpation.
	3	Uncommon throughout its range or in the province (21 to 100 occurrences).
	4	Widespread, abundant, and apparently secure throughout its range or in the province, with many occurrences, but the element is of long-term concern (> 100 occurrences).
	5	Demonstrably widespread, abundant, and secure throughout its range or in the province, and essentially impossible to eradicate under present conditions.
	U	Possibly in peril, but status uncertain; more information needed.
	H	Historically known; may be rediscovered.
	X	Believed to be extinct; historical records only, continue search.
	SNR	A species not ranked. A rank has not yet assigned or the species has not been evaluated.
	SNA	A conservation status rank is not applicable to the element.
Other Heritage Codes	G#G#	Numeric range rank: A range between two of the numeric ranks. Denotes range of uncertainty about the exact rarity of the species.
	S#S#	
Subrank	T	Rank for subspecific taxon (subspecies, variety, or population); appended to the global rank for the full species, e.g. G4T3.
Qualifiers	B	Breeding status of a migratory species. Example: S1B,SZN - breeding occurrences for the species are ranked S1 (critically imperilled) in the province, nonbreeding occurrences are not ranked in the province.
	N	Non-breeding status of a migratory species. Example: S1B,SZN - breeding occurrences for the species are ranked S1 (critically imperilled) in the province, nonbreeding occurrences are not ranked in the province.
	Q	Taxonomic questions or problems involved, more information needed; appended to the global rank.
	T	Rank for subspecific taxon (subspecies, variety, or population); appended to the global rank for the full species.
	#	A modifier to SX or SH; the species has been reintroduced but the population is not yet established.
	?	Inexact or uncertain; for numeric ranks, denotes inexactness.

MBCDC Species of Conservation Concern include species that are rare, disjunct, at risk (over their range or in Manitoba), in need of further research, are listed under the Manitoba Endangered Species Act (MBESA), or are recognized by designation by the Committee On the Status of Endangered Wildlife In Canada (COSEWIC). The Conservation Data Centre ranks species status according to a standardized procedure used by all Conservation Data Centres and Natural Heritage Programs. These ranks are used to determine protection and data collection priorities, and are revised as new information becomes available.

For each level of distribution—global and provincial—species are assigned a numeric rank ranging from 1 (very rare) to 5 (demonstrably secure). This reflects the species' relative endangerment and is based primarily on the number of occurrences of that species globally or within the province. However, other information, such as date of collection, degree of habitat threat, geographic distribution patterns and population size and trends, is considered when assigning a rank. The number of occurrences listed below are suggestions, not absolute criteria.

Table – 06: Plant Species List for Mid-Boreal Lowland

Species	Common Name	Abundance	Distribution	Habitat
<i>Agropyron pectiniforme</i>	Crested wheat-grass	Scarce	Local	Roadsides in the central area of the Model Forest
<i>Agropyron trachycaulum</i> var. <i>glaucum</i>	Slender wheat-grass	Scarce	Local	Dry, gravelly soils, thickets in the southern half of the Model Forest
<i>Amelanchier humilis</i>	Serviceberry	Scarce	Local but possibly Widespread	Rock outcrops in the northeastern quadrant of the Model Forest. Its occurrence in the Model Forest is at the western limit of its range (Scoggan 1978)
<i>Amorpha canescens</i>	Leadplant	Common	Scattered	Dry sandy soils in open jack pine forest in the southern half of the Model Forest. Its occurrence in the Model Forest is at the northern limit of its range
<i>Amphicarpa bracteata</i>	Hog-peanut	Scarce	Local	Sandy soil at forest edge in the southwestern quadrant of the Model Forest but usually prefers moist deciduous forest. Its occurrence in the Model Forest
<i>Anaphalis margaritacea</i>	Pearly everlasting	Common	Widespread	Dry soils in old fields, open jack pine forest, roadsides. Its occurrence in the Model Forest is at the northern limit of its range (Scoggan 1978)
<i>Andropogon gerardii</i>	Big blue-stem	Scarce to abundant	Scattered	Sandy soils of clearings, open ground, roadsides in the southern half of the Model Forest and Quesnel Lake area
<i>Antennaria neglecta</i>	Pussy-toes	Common	Widespread	Rock outcrops, dry sandy soils in clearings and open forest
<i>Antennaria neodioica</i>	Common pussy-toes	Common	Scattered	Rock outcrops and dry sandy soils in clearings
<i>Antennaria plantaginifolia</i>	Plantain-leaved everlasting	Scarce	Local	Dry sandy soils in fields and open forest in the southern half of the Model Forest. Its occurrence in the Model Forest is at the northern limit of its range
<i>Apocynum cannabinum</i>	Indian hemp	Scarce	Scattered	Dry soils of open ground and thickets
<i>Arabis glabra</i>	Tower-mustard	Scarce	Scattered	Dry soils in open ground
<i>Artemisia ludoviciana</i> var. <i>gnaphalodes</i>	Prairie sage	Common	Local	Sandy soil in clearings
<i>Artemisia ludoviciana</i> var. <i>pabularis</i>	Prairie sage			
<i>Asarum canadense</i>	Wild ginger	Scarce	Scattered	Moist soils in deciduous (often trembling aspen) forest
<i>Asclepias incarnata</i> var. <i>incarnata</i>	Swamp milkweed	Scarce to common	Scattered	Ditches, marshes, wet thickets
<i>Aster lateriflorus</i>	Wood aster	Scarce	Scattered	Forest edges and clearings, roadsides in the southern third of the Model Forest. Its occurrence in the Model Forest is at the northern limit of its range
<i>Aster laurentianus</i>	Rayless aster	Scarce	Scattered	Mine tailings
<i>Aster modestus</i>	Large northern aster	Scarce	Local	Wet soils at edge of black spruce forest. A northern extension of its range in eastern Manitoba. Manitoba rare plant (White and Johnson 1980)
<i>Brasenia schreberi</i>	Water-shield	Common	Local	Quiet water of slightly acidic shallow lakes in the southeastern quadrant of the Model Forest. Its occurrence in the Model Forest is at the northwest limit of its range
<i>Brassica kaber</i>	Charlock	Scarce	Scattered	Roadsides
<i>Bromus kalmii</i>	Wild chess	Scarce	Local	Edge of trembling aspen forest in the southern half of the Model Forest
<i>Bromus porteri</i>	Porter's chess	Scarce	Local	Dry to moist soils in thickets in the southern half of the Model Forest
<i>Campanula glomerata</i>	Clustered bellflower	Scarce	Local	In thicket near lakeshore at Long Lake, a remnant of an old garden
<i>Campanula rapunculoides</i>	Creeping bellflower	Scarce	Local	In thicket near lakeshore at Long Lake, a remnant of an old garden
<i>Caragana arborescens</i>	Siberian pea-shrub			Introduced from Eurasia and cultivated as a hedge in villages and townsites. Occasionally spreading locally. WIN.
<i>Cardamine parviflora</i> var. <i>arenicola</i>	Small bitter-cress	Scarce	Widespread	Sandy soils and rock outcrops in clearings and open forest
<i>Cardamine pratensis</i>	Cuckoo-flower	Scarce	Local	Wet organic soil in black spruce bog in the southwestern quadrant of the Model Forest. Its occurrence in the Model Forest is at the southern limit of its range
<i>Carex brevior</i>	Fescue sedge	Scarce	Scattered	Dry soils of open ground in the southern half of the Model Forest. Its occurrence in the Model Forest is at or near the northern limit of its range
<i>Carex buxbaumii</i>	Brown sedge	Scarce	Local	Edge of wet depressions in loamy soil in a recently logged area in the east-central part of the Model Forest

<i>Carex castanea</i>	Chestnut sedge	Scarce	Scattered	Open, damp, grassy places and roadside ditches. Its occurrence in the Model Forest is at the northwestern limit of its range (Scoggan 1978)
<i>Carex crawfordii</i>	Crawford's sedge	Scarce	Widespread	Dry soils of open deciduous forest
<i>Carex gracillima</i>	Slender sedge	Scarce to common	Scattered	Moist clay soils of trembling aspen forest along river valleys in the southern half of the Model Forest. Its occurrence in the Model Forest is at or n
<i>Carex hystricina</i>	Porcupine sedge	Scarce	Local	Wet meadows and shores along the Winnipeg River. Its occurrence in the Model Forest is at or near the northern limit of its range (Scoggan 1978)
<i>Carex intumescens</i> var. <i>fernaldi</i>	Bladder sedge	Common	Widespread	Wet fens and wet soils in clearings in mixed forest
<i>Carex livida</i>	Livid sedge	Common	Local	Open sphagnum bogs
<i>Carex pensylvanica</i>	Sun-loving sedge	Scarce	Local	Dry soils in open forest in the southwestern quadrant of the Model Forest
<i>Carex projecta</i>	Necklace sedge	Scarce	Scattered	Wet to moist soils in open deciduous forest
<i>Carex richardsonii</i>	Richardson's sedge	Common	Scattered	Sandy (usually calcareous) open ground in the southwestern quadrant of the Model Forest
<i>Carex stipata</i>	Awl-fruited sedge	Scarce	Scattered	Pond margins, along wet ditches in the southern half of the Model Forest. Its occurrence is at or near the northern limit of its range (Scoggan 1978)
<i>Carex viridula</i>	Green sedge	Common	Scattered	Damp shores, margins of wet tailing ponds
<i>Carex xerantica</i>	White-scaled sedge	Scarce	Local	Dry soils of open ground in the eastern half of the Model Forest. Its occurrence in the Model Forest is at the northeastern limit of its range (Scoggan 1978)
<i>Carum carvi</i>	Caraway	Scarce	Widespread	Open grassy areas along roadsides, trails
<i>Ceanothus herbaceus</i>	Narrow-leaved New Jersey tea	Scarce	Local	Dry sandy soils in open jack pine forest in the southwestern quadrant of the Model Forest. Its occurrence in the Model Forest is at the northwestern
<i>Celastrus scandens</i>	Climbing bittersweet	Scarce	Scattered	Moist soils in thickets and deciduous forest in the southern half of the Model Forest. Its occurrence in the Model Forest is at the northern limit of
<i>Chaenorhinum minus</i>	Dwarf snapdragon	Common	Scattered	Dry sandy and gravelly soil along roadsides in the southwestern quadrant of the Model Forest
<i>Chenopodium glaucum</i> var. <i>salinum</i>	Oak-leaved goosefoot	Common	Scattered	Sandy beaches and mine tailings
<i>Chenopodium leptophyllum</i> var. <i>oblongifolium</i>	Narrow-leaved goosefoot	Scarce	Local	Sandy soils near the southern boundary of the Model Forest
<i>Chrysopsis villosa</i>	Hairy golden aster	Abundant	Local	Depressions among rock outcrops in open jack pine forest near Quesnel Lake. This species of dry prairies and sand dunes had been collected in the area
<i>Circaea quadrisulcata</i> var. <i>canadensis</i>	Tall enchanter's-nightshade	Common	Local	Wet depressions in forest in southern third of the Model Forest
<i>Collinsia parviflora</i>	Blue-eyed Mary	Common	Local	Moist soils of open forest
<i>Convolvulus sepium</i>	Wild morning-glory	Scarce	Local	Lakeshores, thickets
<i>Coronilla varia</i>	Field crown-vetch	Common	Local	Rock outcrops in open jack pine forest at edge of mine tailings in the southeastern quadrant of the Model Forest. Probably persisting from a revegetation
<i>Crataegus succulenta</i>	Long-spined hawthorn	Scarce	Scattered	Dry soils in thickets in the southern third of the Model Forest. Its occurrence in the Model Forest is at the northern limit of its range (Scoggan 1978)
<i>Cypripedium acaule</i>	Stemless lady's-slipper	Common	Widespread	Sandy soils in mature jack pine forest
<i>Cypripedium arietinum</i>	Ram's head lady's-slipper	Scarce	Scattered	Moist organic and mineral soils in coniferous forest.
<i>Danthonia spicata</i> var. <i>pinetorum</i>	Poverty oat-grass	Scarce	Local	Dry sandy soils in jack pine forest in the southwestern quadrant of the Model Forest
<i>Dianthus plumarius</i>	Cottage pink	Common	Local	Colonizing rock piles at an abandoned mine in the northern half of the Model Forest. A garden-escape. Introduced (S.E. Europe). 93-895.
<i>Dulichium arundinaceum</i>	Three-way sedge	Common	Local	Marshes at margins of ponds and lakes in the southeastern quadrant of the Model Forest
<i>Elymus canadensis</i>	Canada wild rye	Scarce	Scattered	Sand dunes, sandy soils of open ground and mixed forest in the southern half of the Model Forest. Its occurrence in the Model

				Forest is at the northern limit of its range
<i>Elymus virginicus</i> var. <i>submuticus</i>	Virginia wild-rye	Scarce	Local	Moist deciduous forest in the southwestern quadrant of the Model Forest
<i>Equisetum laevigatum</i>	Smooth scouring rush	Common	Scattered	Dry sandy soils of open ground and shores. Its occurrence in the Model Forest is at the northern limit of its range (Flora of North America Editorial)
<i>Erigeron strigosus</i>	Daisy fleabane	Scarce	Scattered	Dry sandy and gravelly soils, rock outcrops of open ground or open mixed forest in the southern half of the Model Forest. Its occurrence in the Model
<i>Eupatorium perfoliatum</i>	Boneset	Scarce to common	Scattered	Wet soils of thickets, marshes and lake shores
<i>Euphorbia serpyllifolia</i>	Thyme-leaved spurge	Scarce	Scattered	Dry sandy soils, clay soils along roadsides and open ground. Its occurrence in the Model Forest is at the northern limit of its range (Scoggan 1978)
<i>Fraxinus nigra</i>	Black ash	Common	Widespread	Wet to moist soils of low ground, river valleys and lakeshores
<i>Galinsoga ciliata</i>	Galinsoga	Scarce	Local	Disturbed ground, roadsides
<i>Galium aparine</i>	Cleavers	Scarce	Local	Thickets and shores in the southern quarter of the Model Forest. Its occurrence in the Model Forest is at the northern limit of its range (Scoggan 1978)
<i>Gentiana linearis</i> var. <i>rubricaulis</i>	Closed gentian	Scarce	Scattered	Wet organic soils in swamp birch thickets, wet soils in willow/alder thicket. Its occurrence in the Model Forest at or near the northern limit of its
<i>Gentianella crinata</i> ssp. <i>procera</i>	Fringed gentian	Scarce	Local	Moist soil along roadside
<i>Geranium carolinianum</i>	Carolina wild geranium	Scarce	Local	Rock outcrop in the southern half of the Model Forest
<i>Gerardia tenuiflora</i> var. <i>parviflora</i>	Slender agalinis	Scarce	Local	Dry soils of open ground and open forest, occasionally muddy ground. Its occurrence in the Model Forest is at the northern limit of its range (Scoggan 1978)
<i>Geum rivale</i>	Purple avens	Common	Local	Marshes, wet open ground in the southern half of the Model Forest
<i>Glyceria canadensis</i> var. <i>canadensis</i>	Rattlesnake-grass	Scarce to common	Scattered	Shores of lakes and ponds in the eastern half of the Model Forest. Its occurrence in the Model Forest is at the northwest limit of its range. Manitoba
<i>Grindelia squarrosa</i> var. <i>quasiperennis</i>	Gumweed	Common	Local	Roadsides in the southwestern quadrant of the Model Forest
<i>Gypsophila paniculata</i>	Baby's breath	Common	Local	Dry sandy soils along roadside in the southwestern quadrant of the Model Forest. Introduced (Eurasia).
<i>Helianthemum bicknellii</i>	Frostweed	Common	Scattered	Dry sandy soils in clearings in jack pine forest in the southwestern quadrant of the Model Forest. Its occurrence in the Model Forest is at the north
<i>Helianthus tuberosus</i> var. <i>subcanescens</i>	Jerusalem artichoke	Scarce	Local	Long Lake area. Introduced (s U.S.A. and Tropical America)
<i>Heliopsis helianthoides</i>	Ox-eye	Scarce	Local	Dry sandy soils at forest edge
<i>Hudsonia tomentosa</i>	Beach-heath	Scarce to common	Scattered	Loose sandy soils, often in open jack pine forest. Its occurrence in the northeastern quadrant of the Model Forest is a northern extension of its range
<i>Humulus lupulus</i>	Common hop	Scarce	Local	Low thicket in disturbed open ground
<i>Iva xanthifolia</i>	Marsh-elder	Scarce	Local	Roadsides, streambanks in the southwestern quadrant of the Model Forest. Introduced (w U.S.A.) WIN.
<i>Lactuca canadensis</i> var. <i>longifolia</i>	Tall yellow lettuce	Scarce	Local	Willow fen in northern third of the Model Forest
<i>Leesia oryzoides</i>	Rice-cutgrass	Common	Local	marshes in the southern half of the Model Forest
<i>Liatris punctata</i>	Dotted blazingstar			Sandy soils in open jack pine forest. Reported from Victoria Beach. This location is at the northern limit of its range. Gst. Map record at WIN.
<i>Lobelia cardinalis</i>	Cardinal Flower			Collected from a roadside ditch north of Lac du Bonnet in the 1930's. A plant of shores, stream and river banks. Its range extends from Minnesota to Michigan to southern Ontario, Quebec, New Brunswick and southwards to Texas and Florida (Scoggan 1978)
<i>Lotus corniculatus</i>	Birdsfoot-trefoil	Scarce	Widespread	Roadsides of highways and well-travelled gravel roads
<i>Lychnis chalconica</i>	Maltese-cross	Scarce	Scattered	Roadsides, thickets in the southern half of the Model Forest. A garden-escape. Introduced (Asia). WIN.
	Bog club-moss	Common	Local	Moist sandy margin of water-filled depression, surrounded by open willow thicket in the east-central part of the Model Forest
<i>Lycopodium lucidulum</i>	Shining club-	Scarce	Scattered	Moist soils of deciduous and mixed forest in the southern half of the

	moss			Model Forest
<i>Lycopodium tristachyum</i>	Ground-cedar	Scarce	Scattered	Dry sandy soils of open jack pine forest
<i>Lythrum salicaria</i>	Purple loosestrife	Common	Scattered	Observed in the southwestern quadrant of the Model Forest for a number of years along wet ditches from Patricia Beach to Grand Beach Provincial Park
<i>Malaxis unifolia</i>	Green adder's-mouth	Scarce to common	Scattered	Dry soils in trembling aspen-white spruce forest, open sphagnum bogs, sandy pond margins. Its occurrence in the Model Forest is at or near the northern limit of its range
<i>Medicago sativa</i>	Alfalfa	Common	Scattered	Roadsides, disturbed ground in the southern half of the Model Forest. Cultivated in the agricultural area of the Model Forest. Introduced (Eurasia).
<i>Mirabilis nyctaginea</i>	Heart-leaved umbrellawort	Scarce	Local	Dry sandy soils in open ground
<i>Monarda fistulosa</i>	Wild bergamot			Dry soils in clearings, thickets and open forest. Its occurrence in the Model Forest is at the northern limit of its range. Hpr.
<i>Muhlenbergia racemosa</i>	Marsh muhly	Scarce	Scattered	Sandy soil in open jack pine forest
<i>Myriophyllum farwellii</i>	Farwell watermilfoil	Scarce	Local	Stream with organic substrate covering bedrock in the southeastern corner of the Model Forest. Its occurrence in the Model Forest is a northwestern extension of its range
<i>Nymphaea odorata</i> ssp. <i>odorata</i>	Fragrant water-lily	Scarce	Local	Shallow water with sandy substrate in a lake in Nopiming Provincial Park in the east central area of the Model Forest (see Hutchison 1986)
<i>Nymphaea odorata</i> ssp. <i>tuberosa</i>	Magnolia water-lily	Scarce	Local	lake in the southeastern quadrant of the Model Forest. Its occurrence in the Model Forest is a northern extension of its range (Barker and Barkley)
<i>Onoclea sensibilis</i>	Sensitive fern	Common	Widespread	Wet to moist soils of open deciduous forest
<i>Opuntia fragilis</i>	Brittle prickly-pear	Common to abundant	Scattered	Shallow organic soils in crevices in south-facing rock outcrops along rivers, 3-4 m above the water line (Frego and Staniforth 1986). The occurrence
<i>Osmorhiza claytonii</i>	Sweet cicely	Scarce	Local	Moist soils in deciduous forest at the southern border of the Model Forest. Its occurrence in the Model Forest is at the northern limit of its range
<i>Osmunda claytoniana</i>	Interrupted fern	Scarce	Widespread	Moist soils of coniferous forest
<i>Ostrya virginiana</i>	Ironwood	Scarce	Local	Fresh soils in deciduous forest at the southern border of the Model Forest. Its occurrence there is at the northern limit of its range. Manitoba rar
<i>Panicum depauperatum</i> var. <i>depauperatum</i>	Depauperate panic grass	Common	Local	Thin, dry soils among rock outcrops in open jack pine forest. Its occurrence in the Model Forest is at the northern limit of its range (Scoggan 1978)
<i>Panicum depauperatum</i> var. <i>psilophyllum</i>	Depauperate panic grass	Common	Widespread	Sandy soils in open mature jack pine forest, sandy soils in jack pine regeneration after fire, thin soils among rock outcrops. Its occurrence in the
<i>Panicum lanuginosum</i>	Soft millet	Common	Scattered	Sandy soils in mature jack pine forest
<i>Panicum lanuginosum</i> var. <i>implicatum</i>	Soft millet	Common	Scattered	Thin, dry soils among rock outcrops in open mixed forest
<i>Panicum lanuginosum</i> var. <i>septentrionale</i>	Soft millet	Common	Scattered	Sandy soils in open mature jack pine forest, sandy soils in jack pine regeneration after fire. Its occurrence in the Model Forest is at the northern limits of its range
<i>Panicum leibergii</i>	Leiberg's panic grass	Scarce	Scattered	Dry soils of meadows, open forest in the southern half of the Model Forest
<i>Panicum miliaceum</i>	Millet	Scarce	Local	Waste places
<i>Panicum perlongum</i>	Long-stalked panic grass	Common	Local	Dry soil on slope in open jack pine stand at the edge of a bedrock knoll. Its occurrence in the Model Forest is at the northern limit of its range.
<i>Panicum xanthophysum</i>	Yellow panic grass	Common	Widespread	Rock outcrops, sandy soils of mature jack pine forest
<i>Parnassia glauca</i>	Glaucous grass-of-Parnassus	Scarce	Local	Moist to wet calcareous soils in the southwestern quadrant of the Manitoba Model Forest.
<i>Parthenocissus inserta</i>	Large-toothed Virginia creeper	Common	Local	Moist soils of thickets in the southern third of the Model Forest. Its occurrence in the Model Forest is at the northern limit of its range (Scoggan 1978)
<i>Parthenocissus quinquefolia</i>	Virginia creeper	Scarce	Scattered	Moist soils of thickets and deciduous forest in the southwestern quadrant of the Model Forest
<i>Pastinaca sativa</i>	Parsnip	Scarce	Scattered	Roadsides and disturbed ground
<i>Pedicularis canadensis</i>	Wood-betony	Common	Local	Sandy and gravelly soils of thickets at the southern edge of the Model Forest. Its occurrence in the Model Forest is at the northern limits of its range

<i>Pedicularis lanceolata</i>	Swamp lousewort	Scarce	Local	Moist soils at edge of trembling aspen forest
<i>Pinus resinosa</i>	Red pine	Scarce	Local	Well-drained sandy soils.
<i>Polygonatum biflorum</i>	Solomon's-seal	Scarce	Local	Dry soils in clearings in deciduous forest in the southern half of the Model Forest. Its occurrence in the Model Forest is at the northern limit of its range
<i>Polygonum convolvulus</i>	Wild buckwheat	Scarce	Scattered	Roadsides, thickets, cultivated and disturbed ground in the southern half of the Model Forest
<i>Polygonum sagittatum</i>	Arrow-leaved-tearthumb	Scarce	Scattered	Wet soils in black ash stands, marshes
<i>Polygonum scandens</i>	Climbing false buckwheat	Scarce	Scattered	Moist soils in thickets
<i>Potamogeton obtusifolius</i>	Blunt-leaved pondweed	Scarce	Scattered	Ditches, quiet water of rivers and lakes
<i>Potentilla rivalis</i>	Brook cinquefoil	Scarce	Local	Wet open ground at the southern edge of the Model Forest
<i>Prunus americana</i>	American plum			
<i>Prunus nigra</i>	Canada plum	Scarce	Scattered	Thickets, forest edges in the southern half of the Model Forest. Its occurrence in the Model Forest is at the northern limit of its range (Scoggan 1978)
<i>Pteridium aquilinum</i> var. <i>latiusculum</i>	Bracken	Common	Widespread	Roadsides, dry soils of thickets and open forest. This variety is at the northwestern limit of its range (Flora of North America Editorial Committee)
<i>Pyrola rotundifolia</i> var. <i>americana</i>	Round-leaved pyrola	Scarce	Scattered	Sandy soils in mature jack pine forest. Its occurrence in the Model Forest is at the northwestern limit of its range. Manitoba rare plant (White and
<i>Rhus glabra</i>	Smooth sumac	Common	Widespread	Open rocky ground. Its occurrence near Bissett on south-facing cliffs is at or near the northern limit of its range (Scoggan 1978, Soper and Heimberg
<i>Sagittaria rigida</i>	Sessile-fruited arrowhead	Scarce	Scattered	Muddy shores and shallow water. Its occurrence in the Model Forest is at the northern limit of its range (Scoggan 1978). Manitoba rare plant (White
<i>Salix amygdaloides</i>	Peach-leaved willow	Common	Scattered	Moist soils along lakeshores and rivers in the southern half of the Model Forest. Its occurrence in the Model Forest is at or near the northern limit of its range
<i>Salix cordata</i>	Heartleaf willow	Common	Local	Sandy shores and dunes along Lake Winnipeg
<i>Salix fragilis</i>	Crack willow			Ornamental willow planted in townsites and shelterbelts. Introduced (Europe).
<i>Salix pseudomonticola</i>	Willow			
<i>Sambucus racemosa</i> var. <i>pubens</i>	Red-berried elder	Scarce	Local	Rock outcrops in the southern third of the Model Forest
<i>Saxifraga virginiensis</i>	Early saxifrage	Scarce	Scattered	Moss covered rocks, wet sands and gravels in the southern half of the Model forest. Its occurrence in the Model Forest is at the northwestern limit of its range
<i>Scirpus fluviatilis</i>	River bulrush	Common to abundant	Scattered	Lakeshores and streams in the southern half of the Model Forest
<i>Secale cereale</i>	Rye	Scarce	Local	Cultivated rye is an occasional escape to roadsides and waste places but rarely becomes established
<i>Sedum hybridum</i>	Stonecrop	Abundant	Local	South-facing rock outcrops in Bissett townsite. Also found growing on rocks by a waterfall at a canoe-only accessible location between Happy and Fry-p
<i>Senecio congestus</i> var. <i>palustris</i>	Marsh-fleabane	Scarce	local but possibly Widespread	Wet meadows near the southern boundary of the Model Forest
<i>Setaria glauca</i>	Foxtail	Scarce	Local	Roadsides waste places
<i>Setaria viridis</i>	Green foxtail	Scarce	Scattered	Roadsides. Introduced (Eurasia).
<i>Silene antirrhina</i>	Sleepy catchfly	Common	Scattered	Sandy soils of open ground and open forest
<i>Sisyrinchium campestre</i>	Blue-eyed grass	Scarce	Local	Among rock outcrops in mixed forest in the southern half of the Model Forest. Its occurrence in the Model Forest is at the northern limit of its range
<i>Smilax herbacea</i> var. <i>lasiocarpa</i>	Carrion-flower	Scarce	Scattered	Fresh to moist soils in open deciduous forest and thickets in the southern half of the Model Forest. Its occurrence in the Model Forest is at the northern limit of its range
<i>Solidago gigantea</i> var. <i>serotina</i>	Late goldenrod	Scarce to common	Widespread	Moist to dry soils along roadsides, edges of deciduous and mixed forests
<i>Solidago spathulata</i> var. <i>neomexicana</i>	Mountain goldenrod			Open ground
<i>Sparganium</i>	Stemless bur-	Scarce to	Widespread	Shallow water of rivers and lakes

<i>chlorocarpum</i>	reed	common		
<i>Sparganium eurycarpum</i>	Broad-fruited bur-reed	Scarce	Local	Shallow water in drainage ditch in the southern half of the Model Forest
<i>Sparganium multipendunculatum</i>	Many stalked bur-reed	Scarce	Scattered	Ponds and lakes
<i>Spiranthes lacera</i> var. <i>lacera</i>	Northern slender ladies'-tresses	Scarce	Widespread	Dry sandy soils of open ground, trail edges
<i>Sporobolus cryptandrus</i>	Sand-drop-seed	Scarce to common	Scattered	Dry sandy soils, often in open jack pine forest in the western half of the Model Forest. Its occurrence in the Model Forest is at the northern limit of its range
<i>Stipa spartea</i>	Porcupine grass	Scarce	Local	Dry, sandy soil in open ground in the southwestern quadrant of the Model Forest
<i>Suaeda maritima</i> var. <i>americana</i>	Sea-blite	Common	Scattered	Beaches and mine tailings
<i>Symphoricarpos occidentalis</i>	Wolfberry			Dry soils in open ground and thickets.
<i>Tanacetum vulgare</i>	Common tansy	Scarce	Widespread	Roadsides, rock piles (mine waste). Introduced (Eurasia).
<i>Taxus canadensis</i>	Ground hemlock	Scarce	Scattered	Wet organic soils of black spruce forest in the northern third of the Model Forest. Its occurrence in the Model Forest is at the northwestern limit of its range
<i>Thuja occidentalis</i>	Eastern white cedar	Scarce to common	Scattered	Fresh to wet, mineral and organic soils, often in association with black spruce and tamarack
<i>Torreyochloa pallida</i> var. <i>fernaldii</i>	Torrey's manna grass	Scarce	Local	Mud flats along river in the northeastern quadrant of the Model Forest
<i>Trillium cernuum</i>	Nodding trillium	Scarce	Widespread	Moist soils in deciduous forest Its occurrence in the Model Forest is at the northern limit of its range
<i>Utricularia minor</i>	Lesser bladderwort			Reported by Pip (1977) from a roadside drainage ditch through a black spruce wetland in the north-east quadrant of the Model Forest.
<i>Vaccinium caespitosum</i>	Dwarf bilberry	Scarce	Scattered	Rock outcrops and dry sandy soils in open mature jack pine forest
<i>Verbascum thapsus</i>	Common mullein	Scarce	Scattered	Roadsides in the southern half of the Model Forest. Introduced (Eurasia).
<i>Viburnum lentago</i>	Nannyberry	Scarce to common	Scattered	Moist, usually clay, soils along riverbanks, deciduous and mixed forest. At or near the northern limit of its range in the Model Forest (Scoggan 1978)
<i>Vicia cracca</i>	Tufted vetch	Scarce	Widespread	Roadsides
<i>Viola canadensis</i> var. <i>rugulosa</i>	Western Canada violet	Scarce	Scattered	Moist soils in mixed forest in the southern half of the Model Forest
<i>Viola pubescens</i>	Downy yellow violet	Scarce	Scattered	Moist soils in deciduous forest in the southern half of the Model Forest. Its occurrence in the Model Forest is at the northern limit of its range (Scoggan 1978)
<i>Viola sororia</i>	Woolly blue violet	Scarce	Scattered	Sandy and gravelly soils in thickets and loamy soils on south-facing slopes in young aspen forest in the southern half of the Model Forest. Its occur
<i>Xanthium strumarium</i>	Cocklebur	Scarce	Local	Gravel beach, Lake Winnipeg, in the southwestern quadrant of the Model Forest. Its occurrence in the Model Forest is at the northern limit of its range

Source: Science Team Report- LacSeul Upland Summary Technical Report

Table - 07: Wildlife Species list for the Mid-Boreal Lowland

Common Name	Scientific Name
AMPHIBIANS	
CLASS: AMPHIBIA	
ORDER: CAUDATA (Salamanders)	
Mudpuppy	<i>Necturus maculosus</i>
Blue-spotted Salamander	<i>Ambystoma laterale</i>
ORDER: SALIENTIA (Frogs and Toads)	
American Toad	<i>Bufo americanus</i>
Spring Peeper	<i>Hyla crucifer</i>
Gray Treefrog	<i>Hyla versicolor</i>
Cope's Gray Treefrog	<i>Hyla chrysoscelis</i>
Boreal Chorus Frog	<i>Pseudacris triseriata</i>
Wood Frog	<i>Rana sylvatica</i>
Leopard Frog	<i>Rana pipiens</i>
Green Frog	<i>Rana clamitans</i>
Mink Frog	<i>Rana septentrionalis</i>
LIZARDS AND SNAKES	
CLASS: REPTILIA	
ORDER: TESTUDINES (Turtles)	
Common Snapping Turtle	<i>Chelydra serpentina</i>
Western Painted Turtle	<i>Chrysemys picta</i>
ORDER: SQUAMATA (Lizards and Snakes)	
Red-sided Garter Snake	<i>Thamnophis sirtalis</i>
Red-bellied Snake	<i>Storeria occipitomaculata</i>
BIRDS	
ORDER: GAVIIFORMES (Loons)	
Red-throated Loon	<i>Gavia stellata</i>
Common Loon	<i>Gavia immer</i>
ORDER: PODICIPEDIFORMES (Grebes)	
Pied-billed Grebe	<i>Podilymbus podiceps</i>
Horned Grebe	<i>Podiceps auritus</i>
Red-necked Grebe	<i>Podiceps grisegena</i>
Eared Grebe	<i>Podiceps nigricollis</i>
Western Grebe	<i>Aechmophorus occidentalis</i>
ORDER: PELECANIFORMES (Peleicans)	
American White Pelican	<i>Pelicanus erythrorhynchos</i>
Double-crested Cormorant	<i>Phalacrocorax auritus</i>
ORDER: CICONIIFORMES (Herons and Bitterns)	
American Bittern	<i>Botaurus lentiginosus</i>
Least Bittern	<i>Ixobrychus exilis</i>
Great Blue Heron	<i>Ardea herodias</i>
Great Egret	<i>Casmerodius albus</i>
Snowy Egret	<i>Egretta thula</i>
Little Blue Heron	<i>Egretta caerulea</i>
Tricolored Heron	<i>Egretta tricolor</i>
Green Heron	<i>Butorides virescens</i>
Black-crowned Night-heron	<i>Nycticorax nycticorax</i>
Turkey Vulture	<i>Cathartes aura</i>
ORDER: ANSERIFORMES (Waterfowl)	
Greater White-fronted Goose	<i>Anser albifrons</i>
Snow Goose	<i>Chen caerulescens</i>
Ross' Goose	<i>Chen rossii</i>
Canada Goose	<i>Branta canadensis</i>
Trumpeter Swan	<i>Cygnus buccinator</i>
Tundra Swan	<i>Cygnus columbianus</i>
Wood Duck	<i>Aix sponsa</i>
Gadwall	<i>Anas strepera</i>
American Wigeon	<i>Anas americana</i>
American Black Duck	<i>Anas rubripes</i>
Mallard	<i>Anas platyrhynchos</i>
Blue-winged Teal	<i>Anas discors</i>
Northern Shoveller	<i>Anas clypeata</i>

Northern Pintail	<i>Anas acuta</i>
Green-winged Teal	<i>Anas crecca</i>
Canvasback	<i>Aythya valisineria</i>
Redhead	<i>Aythya americana</i>
Ring-necked Duck	<i>Aythya collaris</i>
Greater Scaup	<i>Aythya marila</i>
Lesser Scaup	<i>Aythya affinis</i>
Surf Scoter	<i>Melanitta perspicillata</i>
White-winged Scoter	<i>Melanitta fusca</i>
Black Scoter	<i>Melanitta nigra</i>
Oldsquaw	<i>Clangula hyemalis</i>
Bufflehead	<i>Bucephala albeola</i>
Common Goldeneye	<i>Bucephala clangula</i>
Hooded Merganser	<i>Lophodytes cucullatus</i>
Common Merganser	<i>Mergus merganser</i>
Red-breasted Merganser	<i>Mergus serrator</i>
Ruddy Duck	<i>Oxyura jamaicensis</i>
ORDER: FALCONIFORMES (Hawks and Falcons)	
Osprey	<i>Pandion haliaetus</i>
Bald Eagle	<i>Haliaeetus leucocephalus</i>
Northern Harrier	<i>Circus cyaneus</i>
Sharp-shinned Hawk	<i>Accipiter striatus</i>
Cooper's Hawk	<i>Accipiter cooperii</i>
Northern Goshawk	<i>Accipiter gentilis</i>
Broad-winged Hawk	<i>Buteo platypterus</i>
Swainson's Hawk	<i>Buteo swainsoni</i>
Red-tailed Hawk	<i>Buteo jamaicensis</i>
Ferruginous Hawk	<i>Buteo regalis</i>
Rough-legged hawk	<i>Buteo lagopus</i>
Golden Eagle	<i>Aquila chrysaetos</i>
American Kestrel	<i>Falco sparverius</i>
Merlin	<i>Falco columbarius</i>
Gyr Falcon	<i>Falco rusticolus</i>
Peregrine Falcon	<i>Falco peregrinus</i>
Prairie Falcon	<i>Falco mexicanus</i>
ORDER: GALLIFORMES (Gallinaceous Birds)	
Gray Partridge	<i>Perdix perdix</i>
Ring-necked Pheasant	<i>Phasianus colchicus</i>
Ruffed Grouse	<i>Bonasa umbellus</i>
Spruce Grouse	<i>Dendragapus canadensis</i>
Willow Ptarmigan	<i>Lagopus lagopus</i>
Sharp-tailed Grouse	<i>Tympanuchus phasianellus</i>
Greater Prairie Chicken	<i>Tympanuchus cupido</i>
Wild Turkey	<i>Meleagris gallopavo</i>
ORDER: GRUIFORMES (Cranes and Allies)	
Yellow Rail	<i>Coturnicops noveboracensis</i>
King Rail	<i>Rallus elegans</i>
Virginia Rail	<i>Rallus limicola</i>
Sora	<i>Porzana carolina</i>
American Coot	<i>Fulica americana</i>
Sandhill Crane	<i>Grus canadensis</i>
Whooping Crane	<i>Grus americana</i>
ORDER: CHARADRIIFORMES (Shorebirds and Gulls)	
Black-bellied Plover	<i>Pluvialis squatarola</i>
American Golden Plover	<i>Pluvialis dominica</i>
Semipalmated Plover	<i>Charadrius semipalmatus</i>
Piping Plover	<i>Charadrius melodus</i>
Killdeer	<i>Charadrius vociferus</i>
American Avocet	<i>Recurvirostra americana</i>
Greater Yellowlegs	<i>Tringa melanoleuca</i>
Lesser Yellowlegs	<i>Tringa flavipes</i>
Solitary Sandpiper	<i>Tringa solitaria</i>
Willet	<i>Catoptrophorus semipalmatus</i>
Spotted Sandpiper	<i>Actitis macularia</i>
Upland Sandpiper	<i>Bartramia longicauda</i>

Eskimo Curlew	<i>Numenius borealis</i>
Whimbrel	<i>Numenius phaeopus</i>
Long-billed Curlew	<i>Numenius americanus</i>
Hudsonian Godwit	<i>Limosa haemastica</i>
Marbled Godwit	<i>Limosa fedoa</i>
Ruddy Turnstone	<i>Arenaria interpres</i>
Red Knot	<i>Calidris canutus</i>
Sanderling	<i>Calidris alba</i>
Semipalmated Sandpiper	<i>Calidris pusilla</i>
Least Sandpiper	<i>Calidris minutilla</i>
White-rumped Sandpiper	<i>Calidris fuscicollis</i>
Baird's Sandpiper	<i>Calidris bairdii</i>
Pectoral Sandpiper	<i>Calidris melanotos</i>
Dunlin	<i>Calidris alpina</i>
Stilt Sandpiper	<i>Calidris himantopus</i>
Buff-breasted Sandpiper	<i>Tryngites subruficollis</i>
Short-billed Dowitcher	<i>Limnodromus griseus</i>
Long-billed Dowitcher	<i>Limnodromus scolopaceus</i>
Common Snipe	<i>Gallinago gallinago</i>
American Woodcock	<i>Scolopax minor</i>
Wilson's Phalarope	<i>Phalaropus tricolor</i>
Red-necked Phalarope	<i>Phalaropus lobatus</i>
Red Phalarope	<i>Phalaropus fulicaria</i>
Parasitic Jaeger	<i>Stercorarius parasiticus</i>
Long-tailed Jaeger	<i>Stercorarius longicaudus</i>
Franklin's Gull	<i>Larus pipixcan</i>
Bonaparte's Gull	<i>Larus philadelphia</i>
Ring-billed Gull	<i>Larus delawarensis</i>
California Gull	<i>Larus californicus</i>
Herring Gull	<i>Larus argentatus</i>
Thayer's Gull	<i>Larus thayeri</i>
Iceland Gull	<i>Larus glaucooides</i>
Glaucous Gull	<i>Larus hyperboreus</i>
Sabine's Gull	<i>Xema sabini</i>
Caspian Tern	<i>Sterna caspia</i>
Common Tern	<i>Sterna hirundo</i>
Arctic Tern	<i>Sterna paradisaea</i>
Forster's Tern	<i>Sterna forsteri</i>
Least Tern	<i>Sterna antillarum</i>
Black Tern	<i>Chlidonias niger</i>
ORDER: COLUMBIFORMES (Doves)	
Rock Dove	<i>Columba livia</i>
Mourning Dove	<i>Zenaidura macroura</i>
Passenger Pigeon	<i>Ectopistes migratorius</i>
ORDER: CUCULIFORMES (Cuckoos)	
Black-billed Cuckoo	<i>Coccyzus erythrophthalmus</i>
Yellow-billed Cuckoo	<i>Coccyzus americanus</i>
ORDER: STRIGIFORMES (Owls)	
Barn Owl	<i>Tyto alba</i>
Eastern Screech Owl	<i>Otus asio</i>
Great-horned Owl	<i>Bubo virginianus</i>
Snowy Owl	<i>Nyctea scandiaca</i>
Northern Hawk Owl	<i>Surnia ulula</i>
Burrowing Owl	<i>Athene cucularia</i>
Barred Owl	<i>Strix varia</i>
Great Gray Owl	<i>Strix nebulosa</i>
Long-eared Owl	<i>Asio otus</i>
Short-eared Owl	<i>Asio flammeus</i>
Boreal Owl	<i>Aegolius funereus</i>
Northern Saw-whet Owl	<i>Aegolius acadicus</i>
ORDER: CAPRIMULGIFORMES (Goat Suckers)	
Common Nighthawk	<i>Chordeiles minor</i>
Whip-poor-will	<i>Caprimulgus vociferus</i>
ORDER: APODIFORMES (Swifts and Hummingbirds)	
Chimney Swift	<i>Chaetura pelagica</i>

Ruby-throated Hummingbird	<i>Archilochus colubris</i>
Rufous Hummingbird	<i>Selasphorus rufus</i>
ORDER: CORACIIFORMES (Kingfishers)	
Belted Kingfisher	<i>Ceryle alcyon</i>
ORDER: PICIFORMES (Woodpeckers)	
Red-headed Woodpecker	<i>Melanerpes erythrocephalus</i>
Red-bellied Woodpecker	<i>Melanerpes carolinus</i>
Yellow-bellied Sapsucker	<i>Sphyrapicus varius</i>
Downy Woodpecker	<i>Picoides pubescens</i>
Hairy Woodpecker	<i>Picoides villosus</i>
Three-toed Woodpecker	<i>Picoides tridactylus</i>
Black-backed Woodpecker	<i>Picoides arctus</i>
Northern Flicker (Yellow-shafted)	<i>Colaptes auratus</i>
Pileated Woodpecker	<i>Dryocopus pileatus</i>
ORDER: PASSERIFORMES (Perching Birds)	
Olive-sided Flycatcher	<i>Contopus borealis</i>
Western Wood-pewee	<i>Contopus sordidulus</i>
Eastern Wood-pewee	<i>Contopus virens</i>
Yellow-bellied Flycatcher	<i>Empidonax flaviventris</i>
Alder Flycatcher	<i>Empidonax alhorum</i>
Willow Flycatcher	<i>Empidonax traillii</i>
Least Flycatcher	<i>Empidonax minimus</i>
Eastern Phoebe	<i>Sayornis phoebe</i>
Great Crested Flycatcher	<i>Myiarchus crinitus</i>
Western Kingbird	<i>Tyrannus verticalis</i>
Eastern Kingbird	<i>Tyrannus tyrannus</i>
Scissor-tailed Flycatcher	<i>Tyrannus forficatus</i>
Loggerhead Shrike	<i>Lanius ludocicianus</i>
Northern Shrike	<i>Lanius excubitor</i>
Yellow-throated Vireo	<i>Vireo flavifrons</i>
Solitary Vireo (*Blue-headed)	<i>Vireo solitarius</i>
Warbling Vireo	<i>Vireo gilvus</i>
Philadelphia Vireo	<i>Vireo philadelphicus</i>
Red-eyed Vireo	<i>Vireo olivaceus</i>
Gray Jay	<i>Perisoreus canadensis</i>
Blue Jay	<i>Cyanocitta cristata</i>
Steller's Jay	<i>Cyanocitta stelleri</i>
Black-billed Magpie	<i>Pica pica</i>
American Crow	<i>Corvus brachyrhynchos</i>
Common Raven	<i>Corvus corax</i>
Horned Lark	<i>Eremophila alpestris</i>
Purple Martin	<i>Progne subis</i>
Tree Swallow	<i>Tachycineta bicolor</i>
Northern Rough-winged Swallow	<i>Stelgidopteryx serripennis</i>
Bank Swallow	<i>Riparia riparia</i>
Cliff Swallow	<i>Petrochelidon pyrrhonota</i>
Barn Swallow	<i>Hirundo rustica</i>
Black-capped Chickadee	<i>Poecile atricapillus</i>
Boreal Chickadee	<i>Poecile hudsonicus</i>
Red-breasted Nuthatch	<i>Sitta canadensis</i>
White-breasted Nuthatch	<i>Sitta carolinensis</i>
Brown Creeper	<i>Certhia americana</i>
House Wren	<i>Troglodytes aedon</i>
Winter Wren	<i>Troglodytes troglodytes</i>
Sedge Wren	<i>Cistothorus platensis</i>
Marsh Wren	<i>Cistothorus palustris</i>
Golden-crowned Kinglet	<i>Regulus satrapa</i>
Ruby-crowned Kinglet	<i>Regulus calendula</i>
Eastern Bluebird	<i>Sialia sialis</i>
Mountain Bluebird	<i>Sialia currucoides</i>
Townsend's Solitaire	<i>Myadestes townsendi</i>
Veery	<i>Catharus fuscescens</i>
Gray-cheeked Thrush	<i>Catharus minimus</i>
Swainson's Thrush	<i>Catharus ustulatus</i>
Hermit Thrush	<i>Catharus guttatus</i>

Wood Thrush	<i>Hylocicla mustelina</i>
American Robin	<i>Turdus migratorius</i>
Varied Thrush	<i>Ixoreus naevius</i>
Gray Catbird	<i>Dumetella carolinensis</i>
Northern Mockingbird	<i>Mimus polyglottos</i>
Brown Thrasher	<i>Toxostoma rufum</i>
European Starling	<i>Sturnus vulgaris</i>
American Pipit (Water)	<i>Anthus rubescens</i>
Sprague's Pipit	<i>Anthus spragueii</i>
Bohemian Waxwing	<i>Bombycilla garrulus</i>
Cedar Waxwing	<i>Bombycilla cedrorum</i>
Golden-winged Warbler	<i>Vermivora chrysoptera</i>
Tennessee Warbler	<i>Vermivora peregrina</i>
Orange-crowned Warbler	<i>Vermivora celata</i>
Nashville Warbler	<i>Vermivora ruficapilla</i>
Northern Parula	<i>Parula americana</i>
Yellow Warbler	<i>Dendroica petechia</i>
Chestnut-sided Warbler	<i>Dendroica pensylvanica</i>
Magnolia Warbler	<i>Dendroica magnolia</i>
Cape May Warbler	<i>Dendroica tigrina</i>
Black-throated Blue Warbler	<i>Dendroica caerulescens</i>
Yellow-rumped Warbler	<i>Dendroica coronata</i>
Black-throated Green Warbler	<i>Dendroica virens</i>
Blackburnian Warbler	<i>Dendroica fusca</i>
Pine Warbler	<i>Dendroica pinus</i>
Palm Warbler	<i>Dendroica palmarum</i>
Bay-breasted Warbler	<i>Dendroica castanea</i>
Blackpoll Warbler	<i>Dendroica striata</i>
Cerulean Warbler	<i>Dendroica cerulea</i>
Black-and-white Warbler	<i>Mniotilta varia</i>
American Redstart	<i>Setophaga ruticilla</i>
Ovenbird	<i>Seiurus aurocapillus</i>
Northern Waterthrush	<i>Seiurus noveboracensis</i>
Connecticut Warbler	<i>Oporornis agilis</i>
Mourning Warbler	<i>Oporornis philadelphia</i>
Common Yellowthroat	<i>Geothlypis trichas</i>
Wilson's Warbler	<i>Wilsonia pusilla</i>
Canada Warbler	<i>Wilsonia canadensis</i>
Yellow-breasted Chat	<i>Icteria virens</i>
Scarlet Tanager	<i>Piranga olivacea</i>
Eastern Towhee	<i>Pipilo erythrophthalmus</i>
American Tree Sparrow	<i>Spizella arborea</i>
Chipping Sparrow	<i>Spizella passerina</i>
Clay-colored Sparrow	<i>Spizella pallida</i>
Field Sparrow	<i>Spizella pusilla</i>
Vesper Sparrow	<i>Poocetes gramineus</i>
Lark Sparrow	<i>Chondestes grammacus</i>
Savannah Sparrow	<i>Passerculus sandwichensis</i>
Grasshopper Sparrow	<i>Ammodramus savannarum</i>
Baird's Sparrow	<i>Ammodramus bairdii</i>
LeConte's Sparrow	<i>Ammodramus leconteii</i>
Nelson's Sharp-tailed Sparrow	<i>Ammodramus nelsoni</i>
Fox Sparrow	<i>Passerella iliaca</i>
Song Sparrow	<i>Melospiza melodia</i>
Lincoln's Sparrow	<i>Melospiza lincolni</i>
Swamp Sparrow	<i>Melospiza georgiana</i>
White-throated Sparrow	<i>Zonotrichia albicollis</i>
Harris' Sparrow	<i>Zonotrichia querula</i>
White-crowned Sparrow	<i>Zonotrichia leucophrys</i>
Golden-crowned Sparrow	<i>Zonotrichia atricapilla</i>
Dark-eyed Junco	<i>Junco hyemalis</i>
Lapland Longspur	<i>Calcarius lapponicus</i>
Smith's Longspur	<i>Calcarius pictus</i>
Chestnut-collared Longspur	<i>Calcarius ornatus</i>
Snow Bunting	<i>Plectrophenax nivalis</i>

Northern Cardinal	<i>Cardinalis cardinalis</i>
Rose-breasted Grosbeak	<i>Pheucticus ludovicianus</i>
Blue Grosbeak	<i>Guiraca caerulea</i>
Lazuli Bunting	<i>Passerian amoena</i>
Indigo Bunting	<i>Passerian cyanea</i>
Dickcissel	<i>Spiza americana</i>
Bobolink	<i>Dolichonyx oryzivorus</i>
Red-winged Blackbird	<i>Agelaius phoeniceus</i>
Eastern Meadowlark	<i>Sturnella magna</i>
Western Meadowlark	<i>Sturnella neglecta</i>
Yellow-headed Blackbird	<i>Xanthocephalus xanthocephalus</i>
Rusty Blackbird	<i>Euphagus carolinus</i>
Brewer's Blackbird	<i>Euphagus cyanocephalus</i>
Common Grackle	<i>Quiscalus quiscula</i>
Brown-headed Cowbird	<i>Molothrus ater</i>
Orchard Oriole	<i>Icterus spurius</i>
Baltimore Oriole	<i>Icterus galbula</i>
Gray-crowned Rosy-finch	<i>Leucosticte lephrocotis</i>
Pine Grosbeak	<i>Pinicola enucleator</i>
Purple Finch	<i>Carpodacus purpureus</i>
House Finch	<i>Carpodacus mexicanus</i>
Red Crossbill	<i>Loxia curvirostra</i>
White-winged Crossbill	<i>Loxia leucoptera</i>
Common Redpoll	<i>Carduelis flammea</i>
Hoary Redpoll	<i>Carduelis hornemanni</i>
Pine Siskin	<i>Carduelis pinus</i>
American Goldfinch	<i>Carduelis tristis</i>
Evening Grosbeak	<i>Coccothraustes vespertinus</i>
House Sparrow	<i>Passer domesticus</i>
MAMMALS	
ORDER: INSECTIVORA (Insectivores)	
Masked Shrew	<i>Sorex cinereus</i>
Water Shrew	<i>Sorex palustris</i>
Arctic Shrew	<i>Sorex arcticus</i>
Pygmy Shrew	<i>Sorex hoyi</i>
Northern Short-tailed Shrew	<i>Blarina brevicauda</i>
Star-nosed Mole	<i>Condylura cristata</i>
ORDER: CHIROPTERA (Bats)	
Little Brown Myotis	<i>Myotis lucifugus</i>
Northern Myotis	<i>Myotis septentrionalis</i>
Silver-haired Bat	<i>Lasionycteris noctivagans</i>
Big Brown Bat	<i>Eptesicus fuscus</i>
Eastern Red Bat	<i>Lasiurus borealis</i>
Hoary Bat	<i>Lasiurus cinereus</i>
ORDER: PRIMATES (Humans)	
Human	<i>Homo sapiens</i>
ORDER: LAGOMORPHA (Hares and Rabbits)	
Snowshoe Hare	<i>Lepus americanus</i>
White-tailed Jack Rabbit	<i>Lepus townsendii</i>
ORDER: RODENTIA (Rodents)	
Eastern Chipmunk	<i>Tamias striatus</i>
Least Chipmunk	<i>Tamias minimus</i>
Woodchuck	<i>Marmota monax</i>
Richardson's Ground Squirrel	<i>Spermophilus richardsonii</i>
Thirteen-lined Ground Squirrel	<i>Spermophilus tridecemlineatus</i>
Franklin's Ground Squirrel	<i>Spermophilus franklinii</i>
Gray or Black Squirrel	<i>Sciurus carolinensis</i>
Fox Squirrel	<i>Sciurus niger</i>
Red Squirrel	<i>Tamiasciurus hudsonicus</i>
Northern Flying Squirrel	<i>Glaucomys sabrinus</i>
Northern Pocket Gopher	<i>Thomomys talpoides</i>
American Beaver	<i>Castor canadensis</i>
Deer Mouse	<i>Peromyscus maniculatus</i>
Southern Red-backed Vole	<i>Clethrionomys gapperi</i>
Southern Bog Lemming	<i>Synaptomys cooperi</i>

Northern Bog Lemming	<i>Synaptomys borealis</i>
Heather Vole	<i>Phenacomys intermedius</i>
Muskrat	<i>Ondatra zibethicus</i>
Meadow Vole	<i>Microtus pennsylvanicus</i>
Norway Rat	<i>Rattus norvegicus</i>
House Mouse	<i>Mus musculus</i>
Meadow Jumping Mouse	<i>Zapus hudsonius</i>
Woodland Jumping Mouse	<i>Napaeozapus insignis</i>
American Porcupine	<i>Erethizon dorsatum</i>
ORDER: CARNIVORA (Carnivores)	
Coyote	<i>Canis latrans</i>
Wolf	<i>Canis lupus</i>
Arctic Fox	<i>Alopex lagopus</i>
Red Fox	<i>Vulpes vulpes</i>
Grey Fox	<i>Urocyon cinereoargenteus</i>
American Black Bear	<i>Ursus americanus</i>
Grizzly Bear	<i>Ursus arctos</i>
Raccoon	<i>Procyon lotor</i>
American Pine Marten	<i>Martes americana</i>
Fisher	<i>Martes pennanti</i>
Ermine	<i>Mustela erminea</i>
Long-tailed Weasel	<i>Mustela frenata</i>
Least Weasel	<i>Mustela nivalis</i>
American Mink	<i>Mustela vison</i>
Wolverine	<i>Gulo gulo</i>
American Badger	<i>Taxidea taxus</i>
Striped Skunk	<i>Mephitis mephitis</i>
River Otter	<i>Lutra canadensis</i>
Mountain Lion	<i>Felis concolor</i>
Lynx	<i>Lynx lynx</i>
Bobcat	<i>Lynx rufus</i>
ORDER: ARTIODACTYLA (Cloven-hoofed Mammals)	
Woodland Caribou	<i>Rangifer tarandus caribou</i>
White-tailed Deer	<i>Odocoileus virginianus</i>
Moose	<i>Alces alces</i>
American Elk	<i>Cervus elaphus</i>

Source: Science Team Report-LacSeul Upland Summary Technical Report