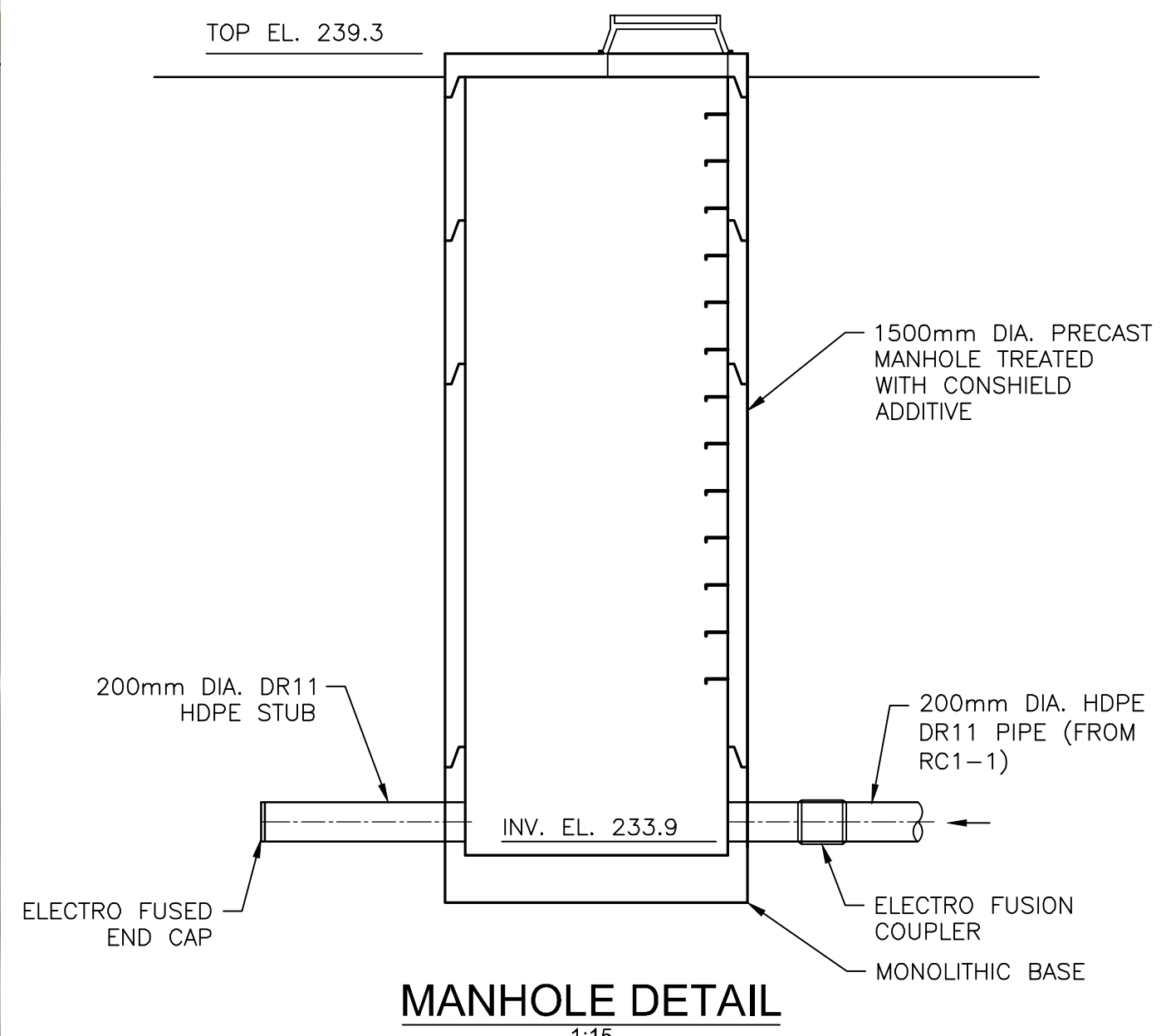
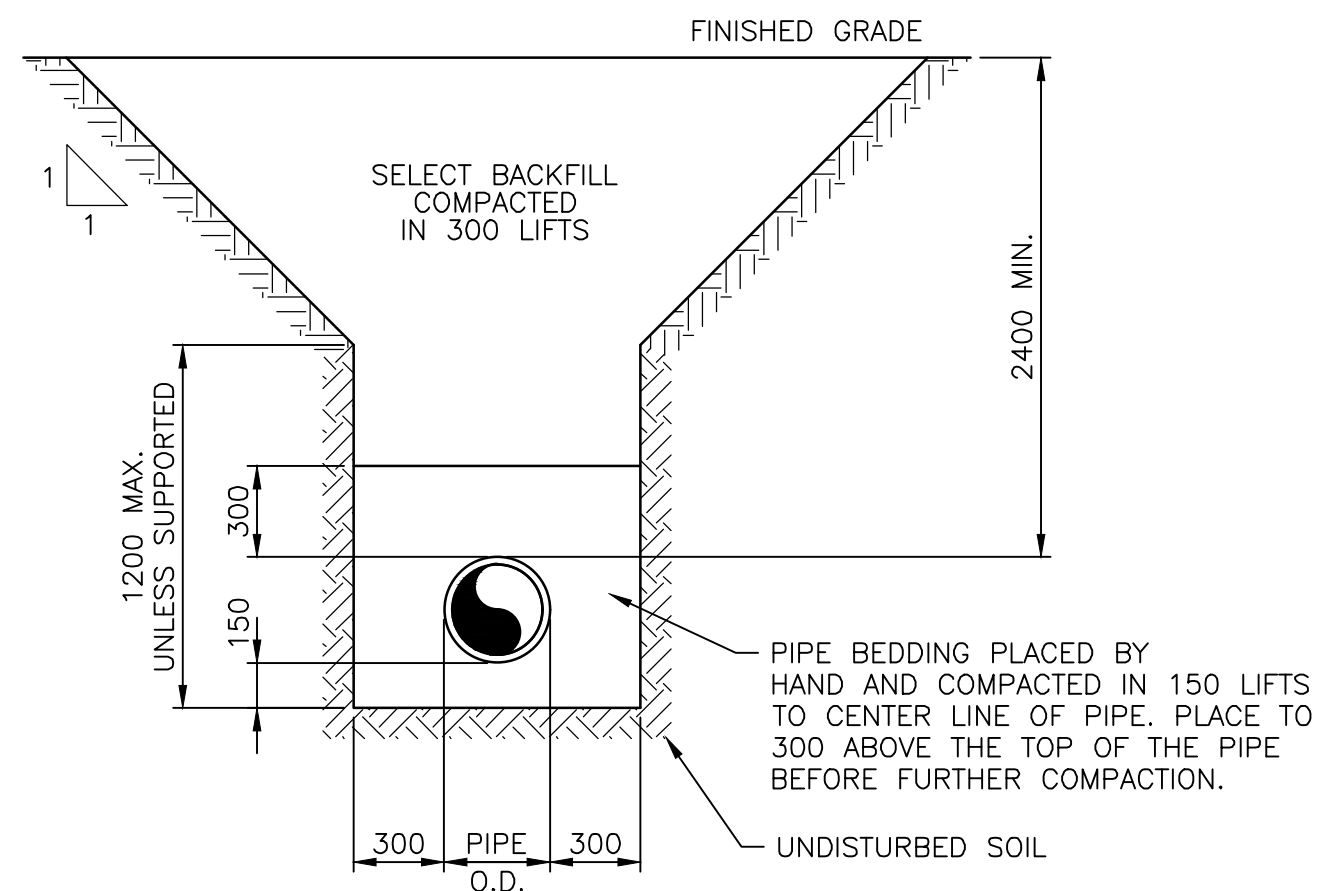




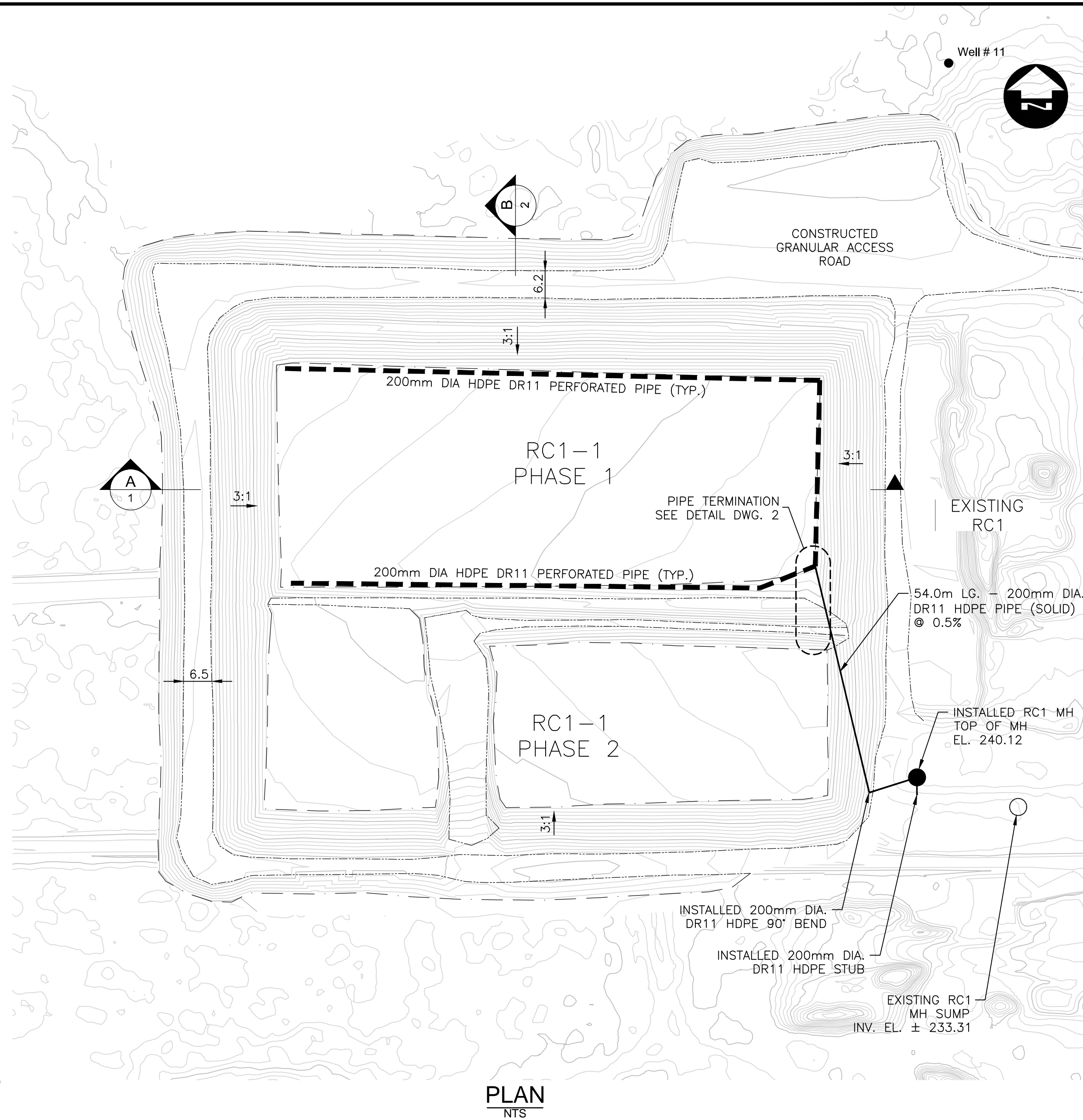
**SITE PLAN**  
NTS



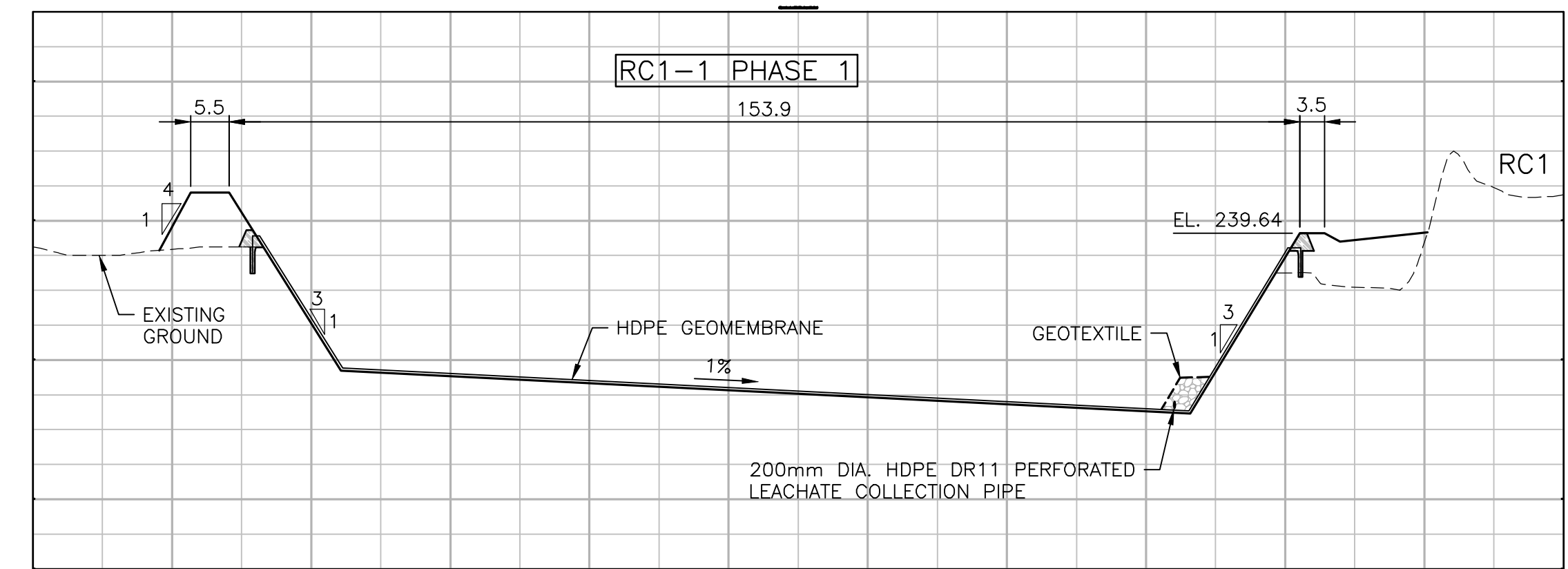
**MANHOLE DETAIL**  
1:15



**PIPE TRENCH DETAIL**  
1:15



**PLAN**  
NTS



**SECTION**  
NTS

**RECORD DRAWING**  
This record document has been prepared based in part upon information furnished by others. Dillon Consulting Limited cannot assure the accuracy of others' information and thus is not responsible for the accuracy of this record document or for any error or omission that may have been incorporated into it as a result. Those relying on this record document are advised to obtain independent verification of its accuracy before applying it for any purpose.

**APEGM**  
Certificate of Authorization  
**Dillon Consulting Limited (MB)**  
No. 1789 Date: FEB. 21, 2019

DATUM: UTM NAD83 ZONE 14N  
ON SITE BENCHMARK (BM.): N49 188763 W97 348697  
IN CONCRETE PAD NORTH SIDE OF BUILDING ELEVATION 240.740

**Conditions of Use**  
Verify elevations and/or dimensions on drawing prior to use. Report any discrepancies to Dillon Consulting Limited.  
Do not scale dimensions from drawing.  
Do not modify drawing, re-use it, or use it for purposes other than those intended at the time of its preparation without prior written permission from Dillon Consulting Limited.



**LEGEND**



No.	ISSUED FOR	DATE	BY
3	RECORD DRAWING	22/1/19	CO
2	GEOTEXTILE REMOVED FROM BASE	6/15/18	CO
1	ISSUED FOR CONSTRUCTION	5/17/18	CO

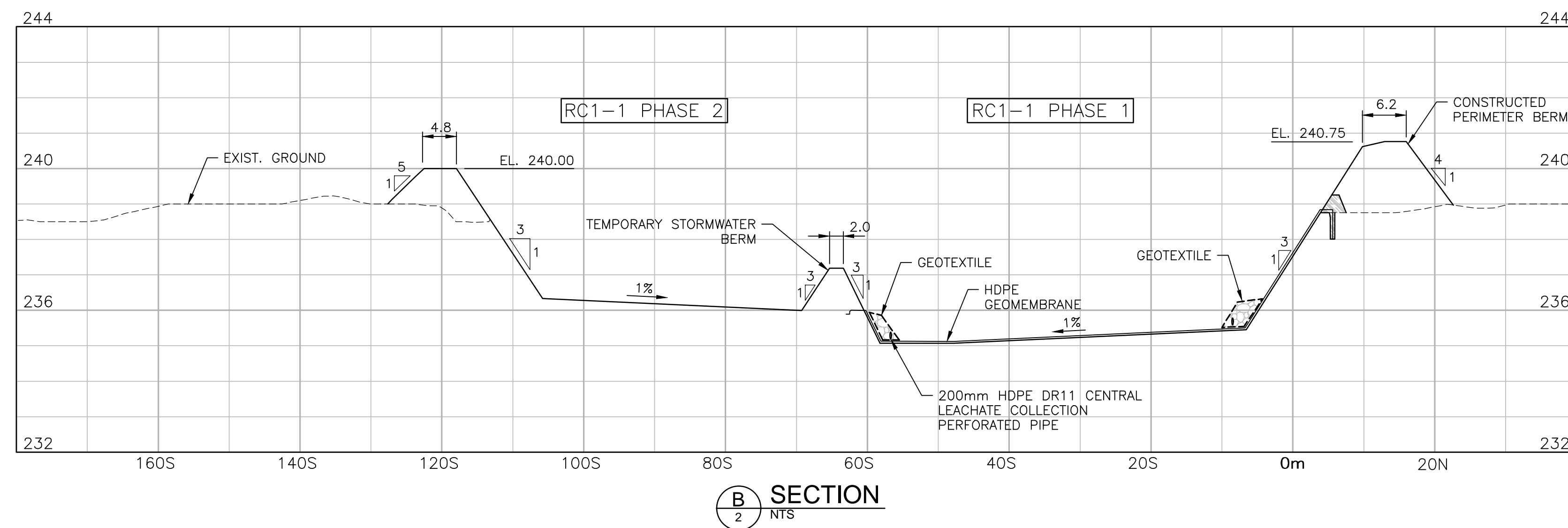
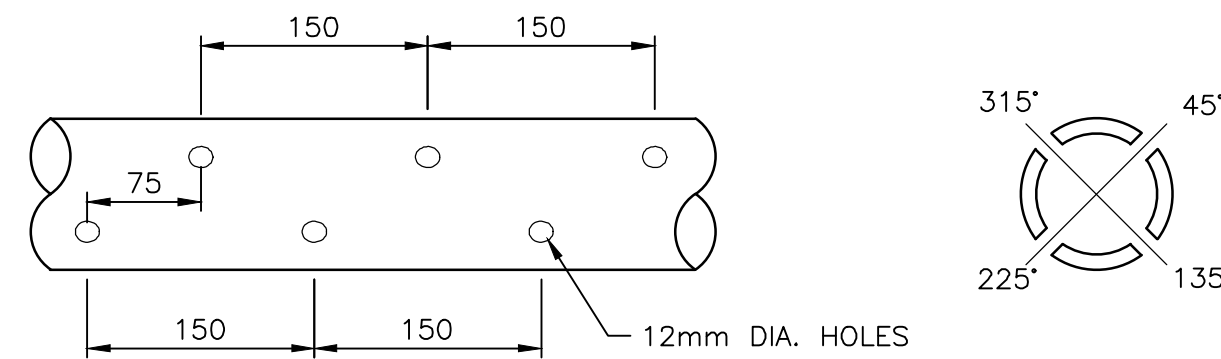
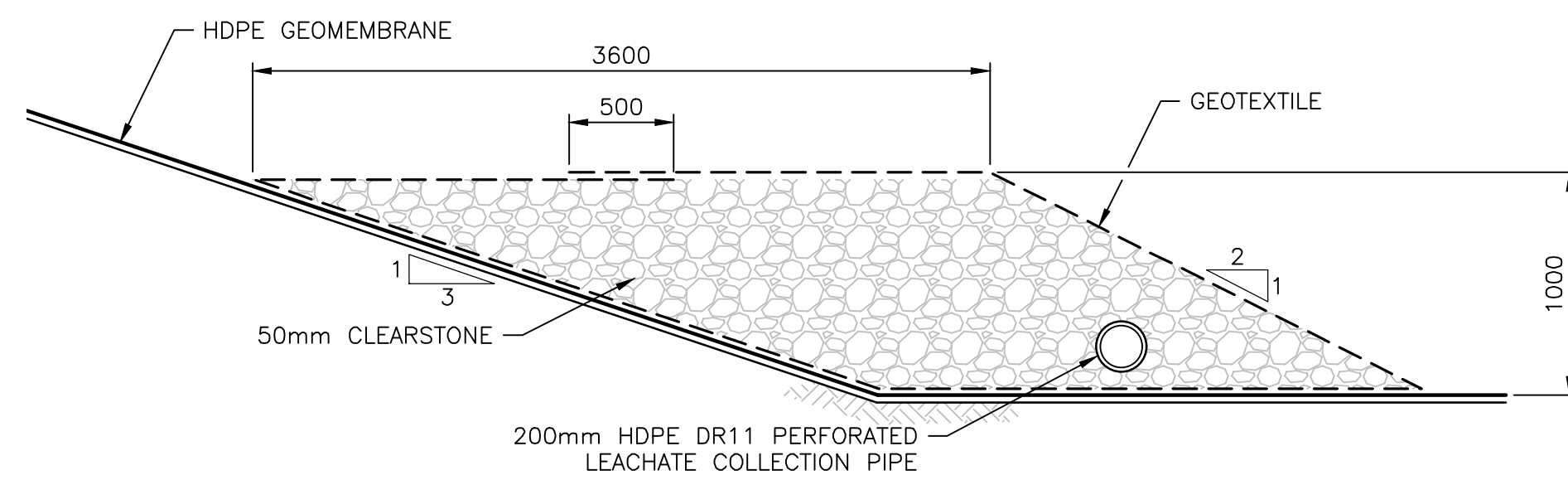
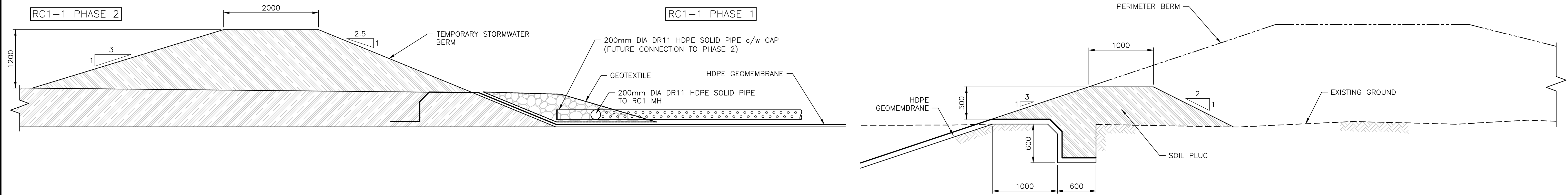
  

DESIGN	REVIEWED BY
CO	CO
DRAWN	CHECKED BY
SKB	CS
DATE	JUNE 15, 2018
SCALE	AS NOTED

<b>MILLER ENVIRONMENTAL CORPORATION</b>		PROJECT NO. 17-5581
<b>PROPOSED RC1 EXPANSION</b>		SHEET NO. <b>1</b>

FILENAME: C:\PROJECTS\WORKING DIRECTORY\ACTIVE\10599\10599.DWG DATE: 2019-02-22 12:28:24 PM PLOT SCALE: 1:2500 PLOT SHEET: CHANNEL - WATER INTAKE PLOTTED BY: BOTTING, SCOTT





**RECORD DRAWING**

This record document has been prepared based in part upon information furnished by others. Dillon Consulting Limited cannot assure the accuracy of others' information and thus is not responsible for the accuracy of this record document or for any error or omission that may have been incorporated into it as a result. Those relying on this record document are advised to obtain independent verification of its accuracy before applying it for any purpose.

**APEGM**  
Certificate of Authorization  
Dillon Consulting Limited (MB)  
No. 1789 Date: FEB. 21, 2019

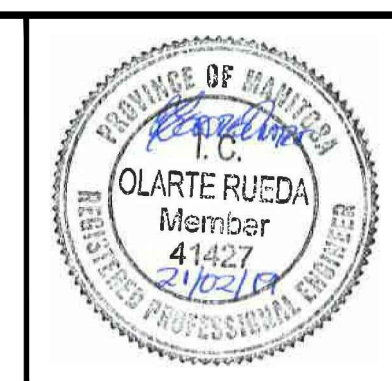
FILENAME: C:\PROJECTS\WORKING DIRECTORY\ACTIVE\WORKS\0499\07\_179581-02-COM-01-USE.DWG  
 PLOT DATE: 2019-02-22 12:12:25 PM EST SCALE: 1:2500 PLOT SHEET: CHANNEL - WATER INTAKE.03B  
 PLOTTED BY: BOHNING, SCOTT

**Conditions of Use**

Verify elevations and/or dimensions on drawing prior to use. Report any discrepancies to Dillon Consulting Limited.

Do not scale dimensions from drawing.

Do not modify drawing, re-use it, or use it for purposes other than those intended at the time of its preparation without prior written permission from Dillon Consulting Limited.



No.	ISSUED FOR	DATE	BY
3	RECORD DRAWING	2/21/19	CO
2	GEOTEXTILE REMOVED FROM BASE	6/15/18	CO
1	ISSUED FOR CONSTRUCTION	5/17/18	CO

DESIGN CO	REVIEWED BY CO	<b>MILLER ENVIRONMENTAL CORPORATION</b>	PROJECT NO. 17-5581
DRAWN SKB	CHECKED BY CS		SHEET NO. <b>2</b>
DATE JUNE 15, 2018		<b>PROPOSED RC1 EXPANSION PLAN AND SECTIONS</b>	
SCALE AS NOTED			