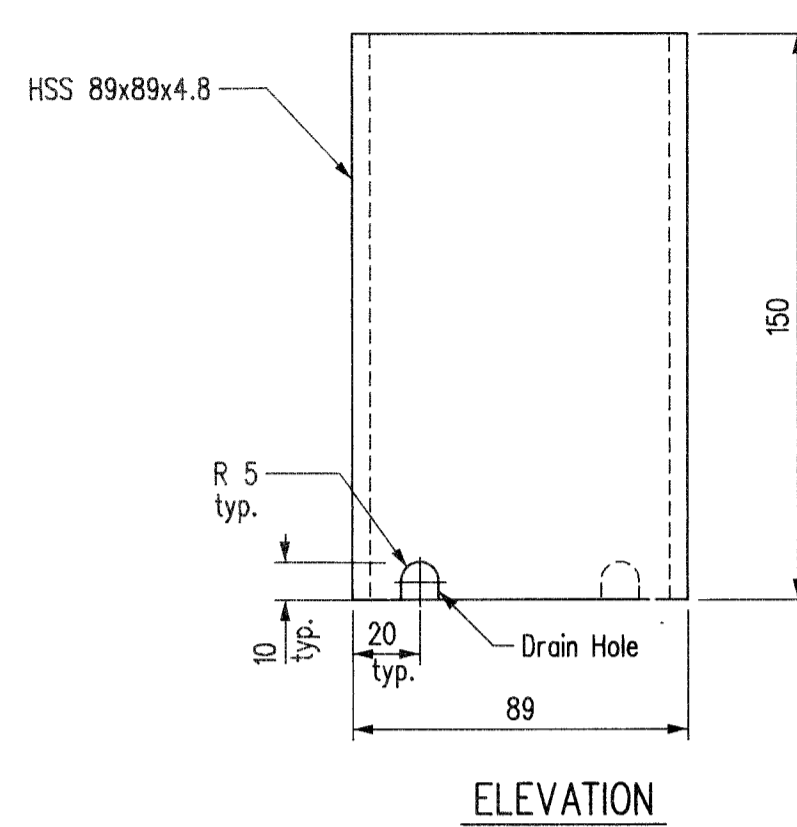
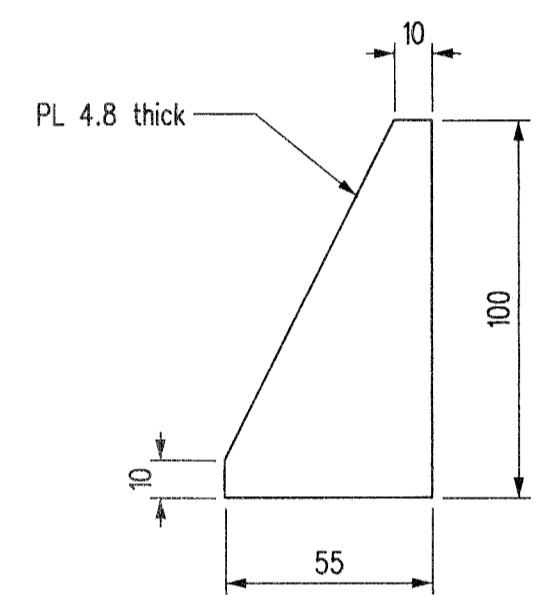
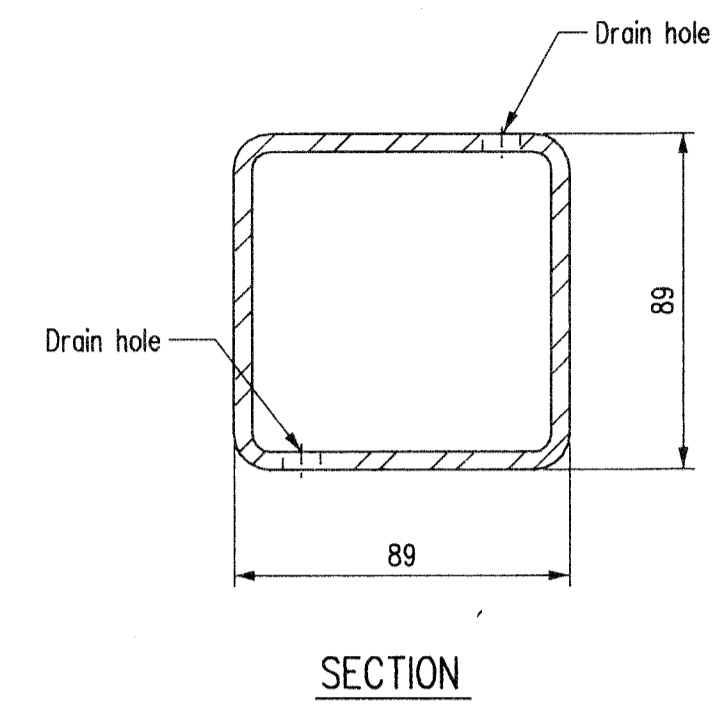


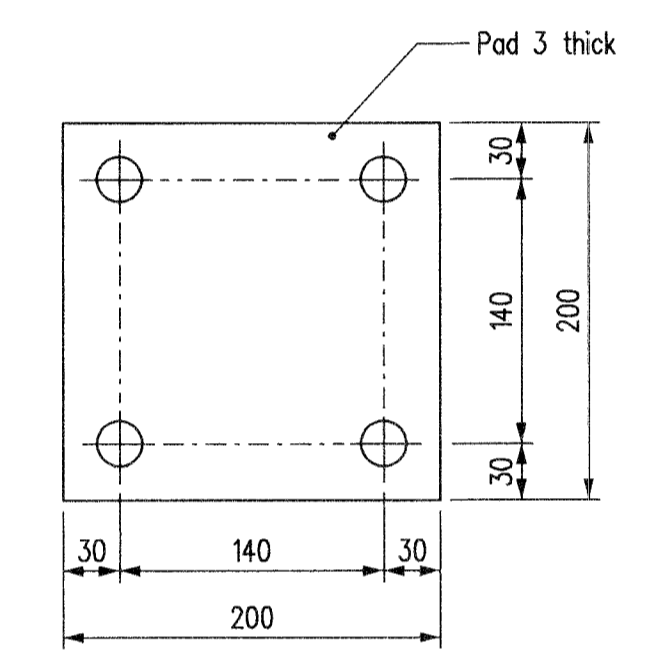
BASE PLATE



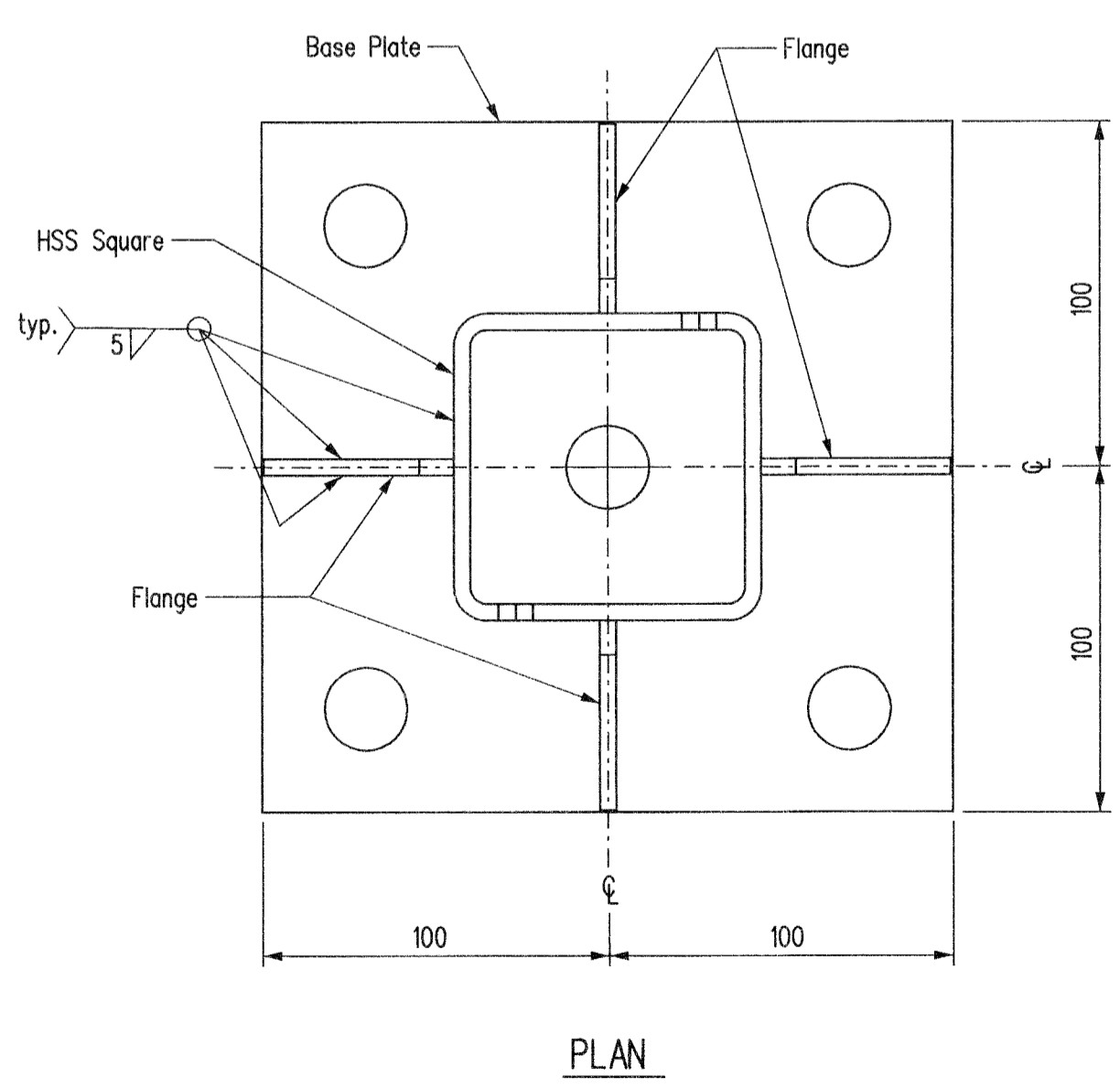
HSS SQUARE



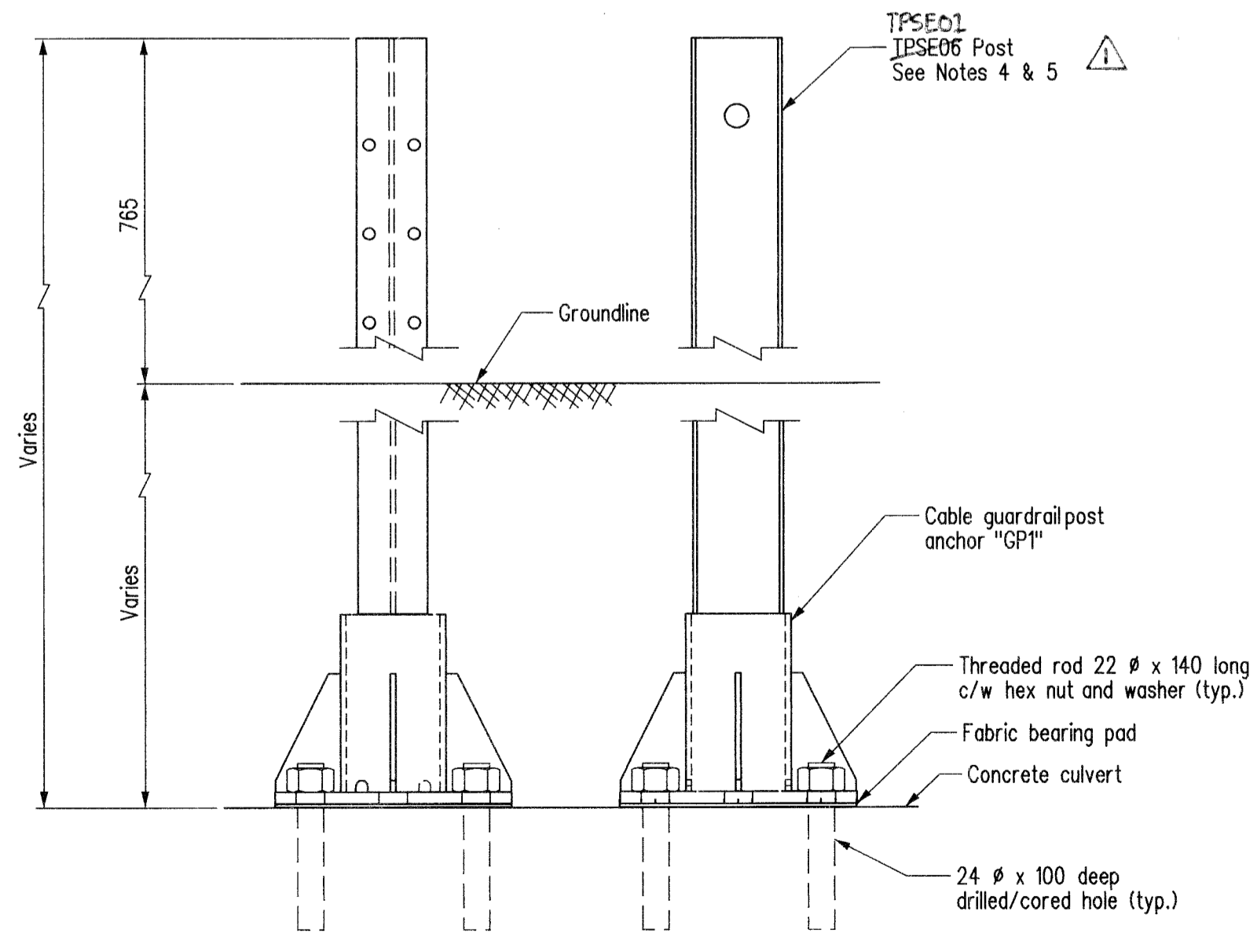
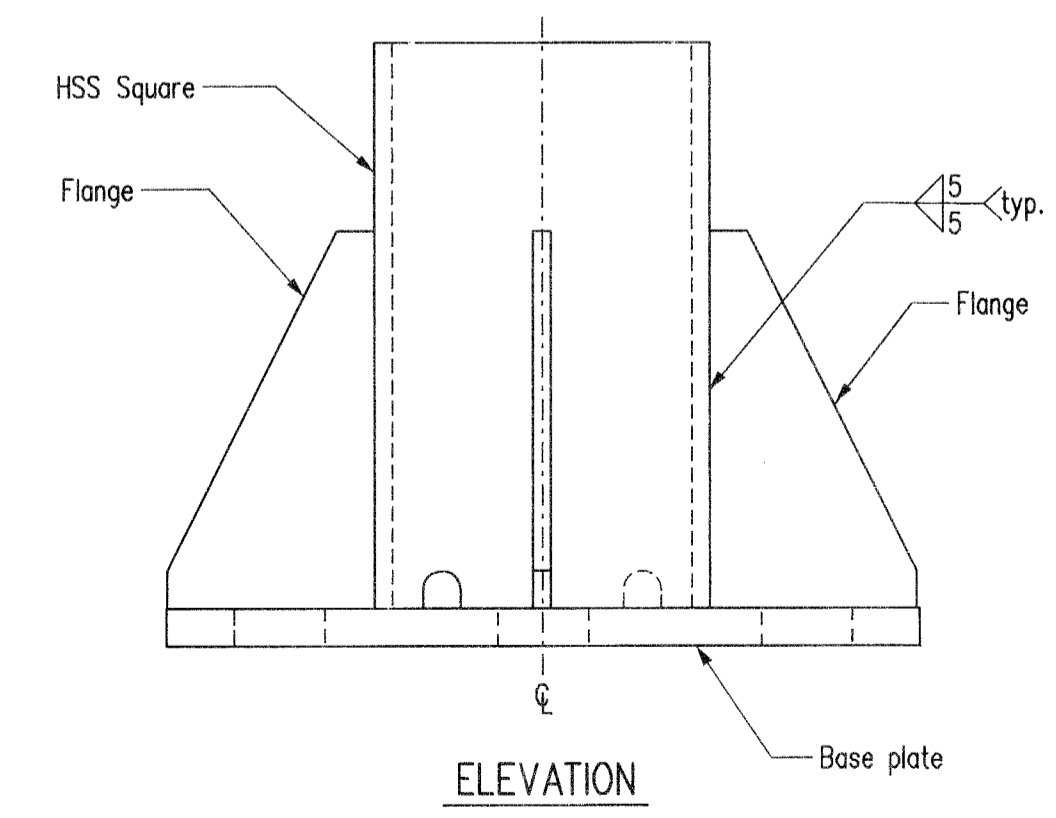
FLANGE



FABRIC BEARING PAD



CABLE GUARDRAIL POST ANCHOR "GP1"



INSTALLATION DETAIL

BILL OF MISCELLANEOUS METAL				SITE No.	
Mk.	No.	DESCRIPTION	SIZE	MASS PER UNIT	TOTAL MASS
GP1		Cable Guardrail post anchor	galvanized after fabrication		
		Each post anchor to be fabricated from :			
		HSS square	89 x 89 x 4.8 , 150 long As detailed	1.824	
		Base plate	PL10 thick As detailed	3.105	
		Flange	PL4.8 thick As detailed	0.524	
			Total	5.453	
		Post	S75 x 8.5 x long galvanized As detailed		
		Threaded rod c/w nut and washer	22 Ø x 140 long galvanized	0.488	
		Fabric bearing pad	As detailed, Fabreeka SA-47 pad or equivalent		
			Total		kg

Notes :

- HSS square and all steel shall conform to CAN/CSA-C40.21-M92 Grade 350W.
- All material in the above Bill shall be galvanized in accordance with CAN/CSA-G164-M92.
- Welding shall meet the current requirements of the American Welding Society, Structural Welding Code ANSI/AASHTO/AWS D.15. TPSE01
- Standard Cable Post and welded soil plate (TPSE06) shall be field cut from bottom to fit the required length; welded soil plate shall be removed by grinding off welds along post. TPSE01
- Cut/grinded locations on TPSE06 post shall be treated with zinc rich paint.
- Use grout pad to level concrete slab prior to installing Cable guardrail post anchor Mk."GP1" (if req'd).

REVISIONS			CABLE GUARDRAIL POST ANCHOR DETAILS	
DATE	BY	DESCRIPTION	DESIGN	RELEASED FOR CONSTRUCTION BY:
			BY: _____ A.P.	DIRECTOR _____ DATE _____
			CHECKED: _____	STRUCTURES DESIGN AND CONSTRUCTION BRANCH
			BY: _____ N.J./A.M.	SCALE: _____ SHEET No. _____
			CHECKED: _____ A.P.	As Shown SITE No. _____

STD CGP1