

Purpose and Need

The principal objectives for the project are;

- **New overpass for PTH 1A over PTH 1 on the west side of Portage La Prairie**

This bridge is an essential connection between the Trans Canada Highway (PTH 1) and Saskatchewan Ave (PTH 1A) on the west side of the city of Portage la Prairie for businesses and residents. This bridge is being replaced after having been in service for more than 50 years, and was in need of replacement following several vehicle collisions that had reduced the bridge to a single lane into the city. The new structure under construction by Manitoba Transportation and Infrastructure will support two lanes of traffic (one lane each for entering and existing Portage) and will have a minimum clearance of 5.4 m (approx. 17' 5"). Please see Figure (1).

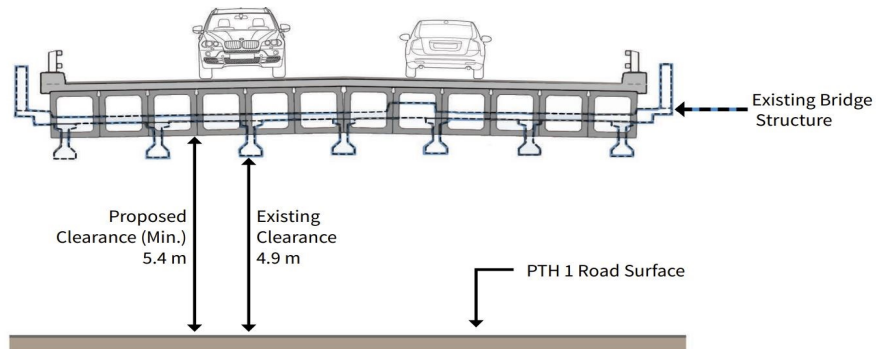


Figure (1)

- **Repairs and upgrades to the PTH1 and CP railway overpass structure**

Rehabilitation is being done to repair deterioration of the bridge deck to provide a better riding surface over the structure as well as extend the service life of the bridge for another 25 years. In addition the service road under the bridge has been widened to provide an alternative access route for agricultural equipment into Portage. Please see Figure (2).

- **Roadwork and Interchange modifications**

PTH 1 has exceeded its service life and will be rebuilt, including construction of two new roundabouts on PTH1A on either side of the new overpass to allow safer flow of traffic coming into and exiting Portage, as well as longer acceleration lanes for easier merging onto Eastbound and Westbound of PTH1. The accesses at Rd 40W will be closed and removed for additional safety for traffic on the Trans-Canada Highway. Please see Figure (3). Agricultural equipment can access Portage through the roundabouts (posted speed limit = 30 km/hr) and the service road below the PTH1 and CP rail overpass.

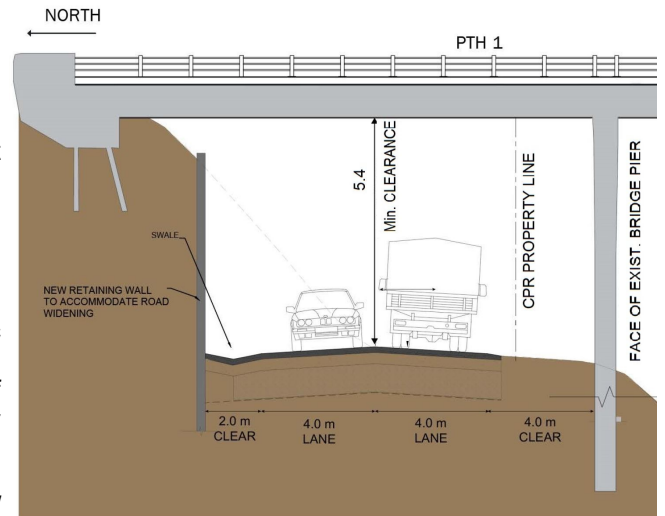


Figure (2)

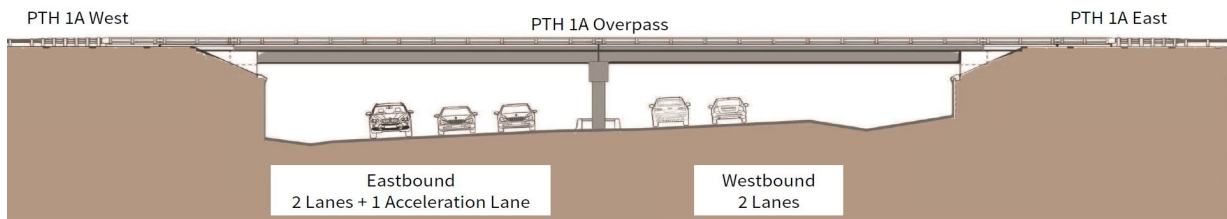


Figure (3)

Construction Staging — Traffic Control

Stage One of the project included building the Westbound exit ramp to Portage and the east roundabout and carrying out the needed rehabilitation for the Westbound lanes of CP overpass. Stage one was completed October 2022.

Stage Two of the project includes the construction of the new PTH 1A overpass, the west roundabout, reconstruction of PTH 1 lanes, and the rehabilitation of the Eastbound lanes of the CP overpass. (Current schedule has work on this stage completed in November 2023).

During Stage Three of the project, traffic will be directed to the new 1A overpass and the two roundabout when coming into or when exiting Portage La Prairie. Please see Figure (4). During this stage of construction, the final works will include completing small sections of median barriers, landscaping, and cleaning. Traffic will be reduced to single lanes on PTH1 for a short period to complete the remaining construction work.

Current Status

- **Construction of the new overpass at PTH1/1A west of Portage La Prairie**

On going and expected to be completed by October 2023

- **Rehabilitation of the structure over CP railway**

On going and expected to be completed by September 2023.

- **Interchange modifications and bituminous reconstruction**

On going and expected to be completed by November 2023.

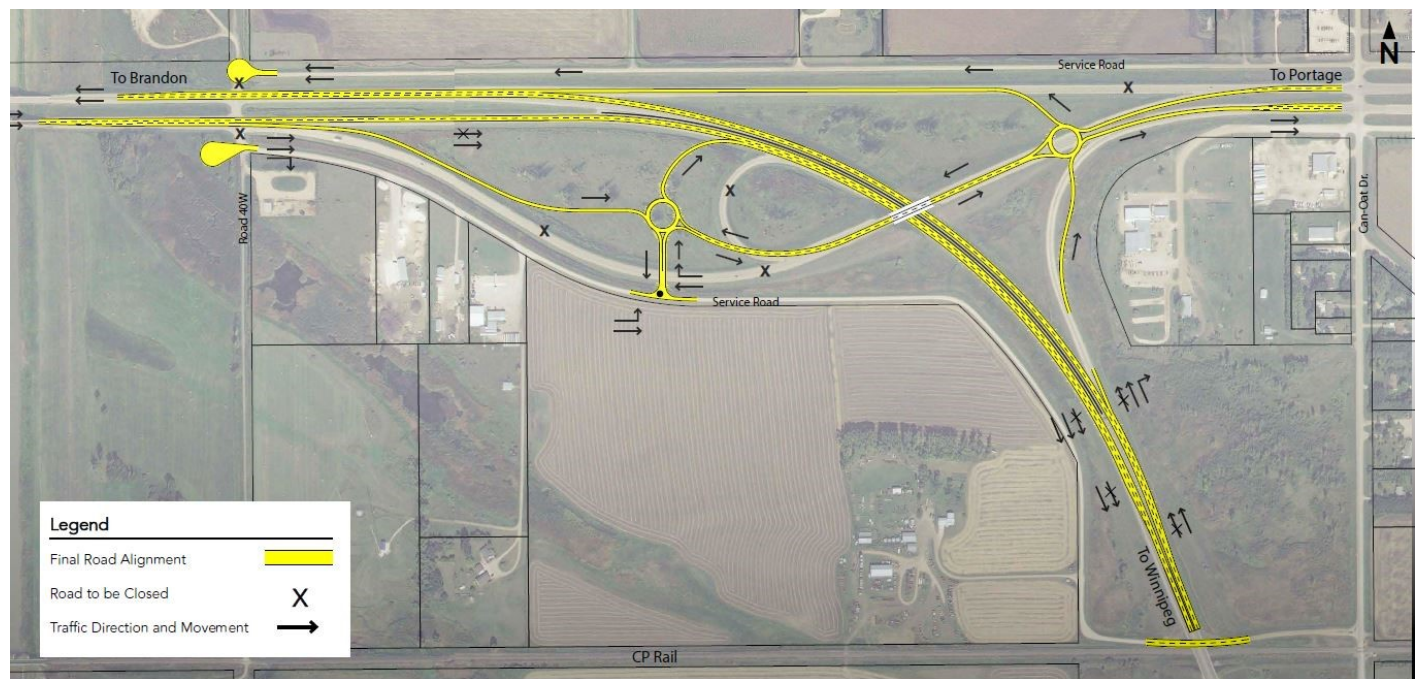


Figure (4)

If you have any questions about PTH1/1A Portage La Prairie west bypass project, please contact Ahmed Mohamed, Manitoba Transportation and Infrastructure.

Cell: (204) 599-0179

Email: Ahmed.Mohamed@gov.mb.ca