

SPRING/SUMMER 2024 NEWSLETTER

Bridge over the Red River on PR 305 (Louis Riel Bridge)

Information on the project, frequently asked questions and design details can be found at [Bridge over the Red River on PR 305 \(www.gov.mb.ca/mti/projects.html\)](http://www.gov.mb.ca/mti/projects.html).

Background Information



The bridge over the Red River on PR 305 (Louis Riel Bridge) in Ste. Agathe, Manitoba, was constructed in

1959



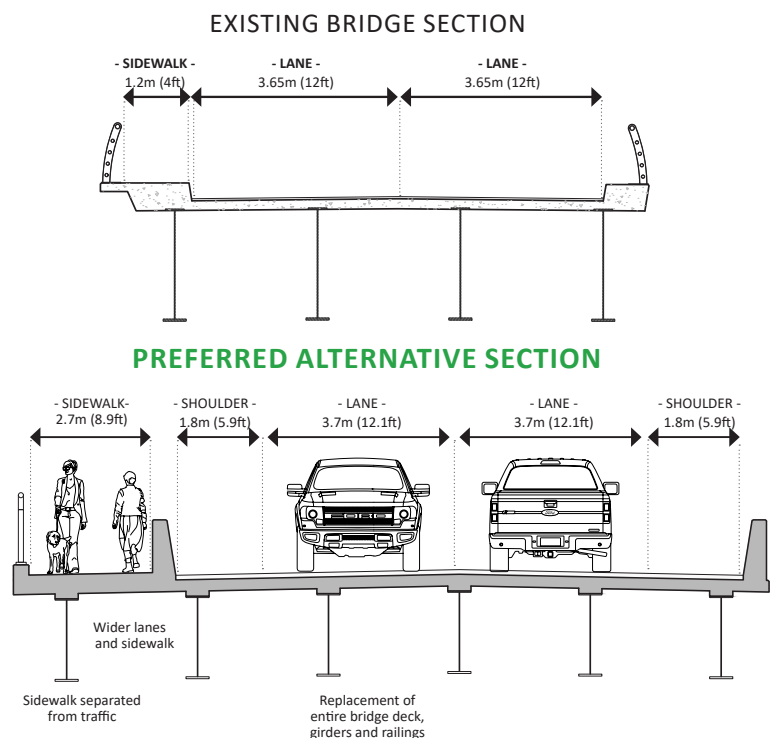
The bridge requires action to maintain serviceability over the next 40 years.

The major rehabilitation of the bridge will provide a greater total roadway width with wider shoulders on each side of the travel lanes; and separate the sidewalk from the roadway. Construction is anticipated to begin in Summer 2024.

Construction Phasing

The construction period will occur in three stages and will span approximately two and a half years (subject to contractors' final scheduling):

- **Stage 1:** Substructure construction in **Summer 2024** with minimal to no impact on traffic as construction occurs under the bridge.
- **Stage 2:** Eastbound lane of bridge rehabilitation from **Fall 2024 to Fall 2025**.
- **Stage 3:** Westbound lane of bridge rehabilitation from **Fall 2025 to Fall 2026**.



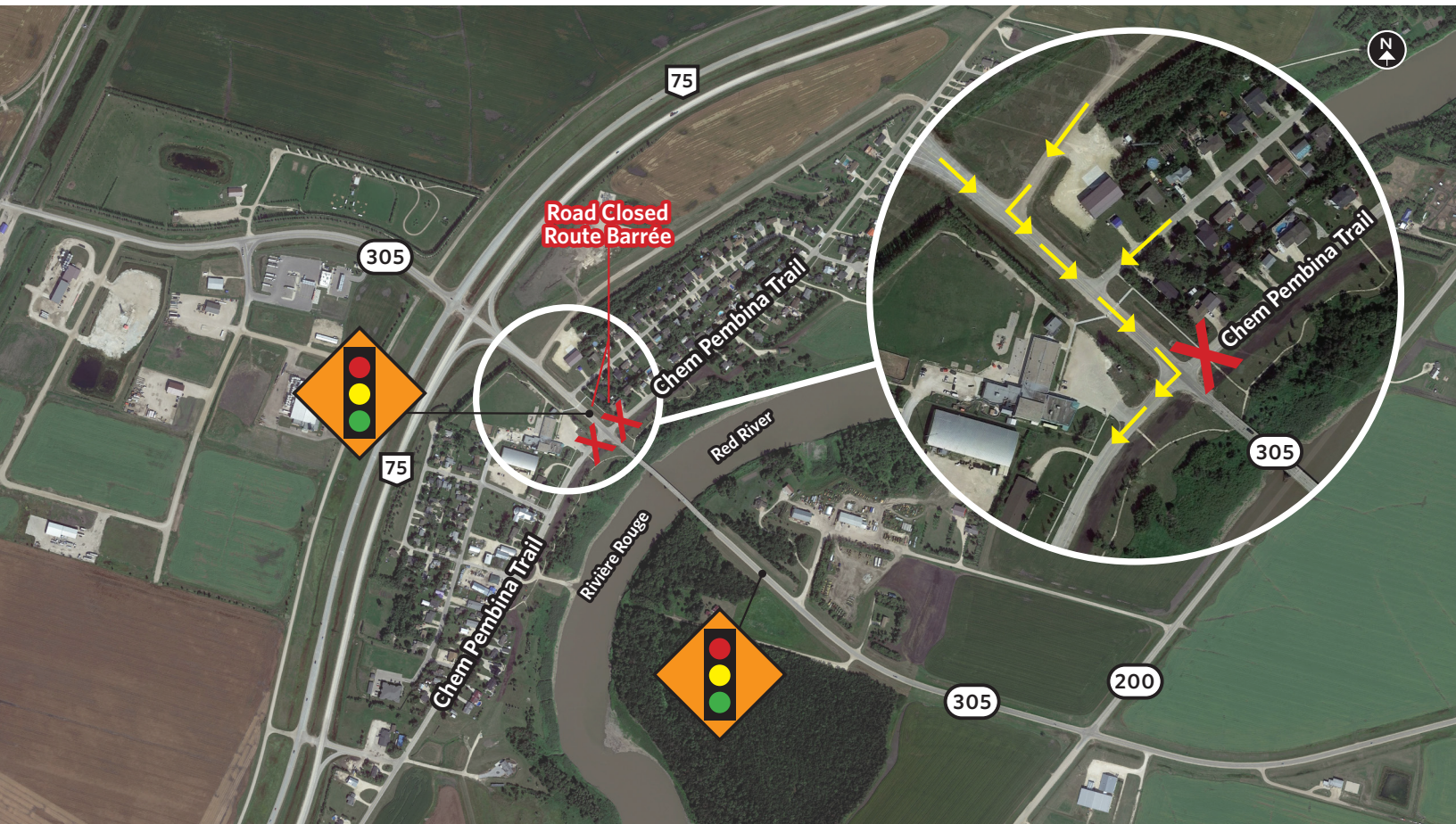
Upcoming Changes to Traffic

The **bridge will remain open during construction** with a single lane controlled by signal lights at each end of the bridge (eastbound and westbound).

Pembina Trail will be closed at PR 305 during Stages 2 and 3 of construction except vehicles travelling eastbound on PR 305 will be permitted to turn right onto Pembina Trail. **Pembina Trail is anticipated to close in October 2024** at the start of Stage 2 construction and will remain closed for the duration of the construction period.

There will be a fixed 30 km/hr (due to the school zone) at the west side of the bridge at all times during construction. The crosswalk on PR 305 to the school will remain open. For the safety of the public, the trail underneath the bridge will be closed at the project limits for the duration of the construction period.

As this is an active construction area, extra caution should be taken. Please consider allowing extra time in your travel plans.



If you have any questions about this project, please contact:

Meagan Boles, Engagement Lead, WSP
T: 204-259-1628 | E: Meagan.boles@wsp.com