

**NOTES:**

- SEPARATE 7 CONDUCTOR CABLES TO BE USED FROM HAND HOLE ACCESS TO SIGNAL HEADS.
- ALL LENSES ARE LED.

**STANDARDS:**

THE CONTRACTOR SHALL ASSEMBLE THE STANDARD AS SHOWN ON LOCATION DRAWINGS AND IN ACCORDANCE WITH THE BEST GENERAL STRUCTURAL STEEL ASSEMBLY PRACTICES. INDIVIDUAL PIECES SHALL BE BOLTED TOGETHER TO FORM THE JOINT-USE STANDARD. ALL FLANGE BOLTS SHALL BE A 325 DESIGNATION, DIA 25mm x 100mm. THE STANDARD SHALL BE LEVELED AND PLUMBED USING THE BASE LEVELLER NUTS PROVIDED. THE "TURN OF NUT" METHOD SHALL BE USED TO TORQUE THE ANCHOR NUTS & FLANGE BOLTS.

**SIGNAL HEADS:**

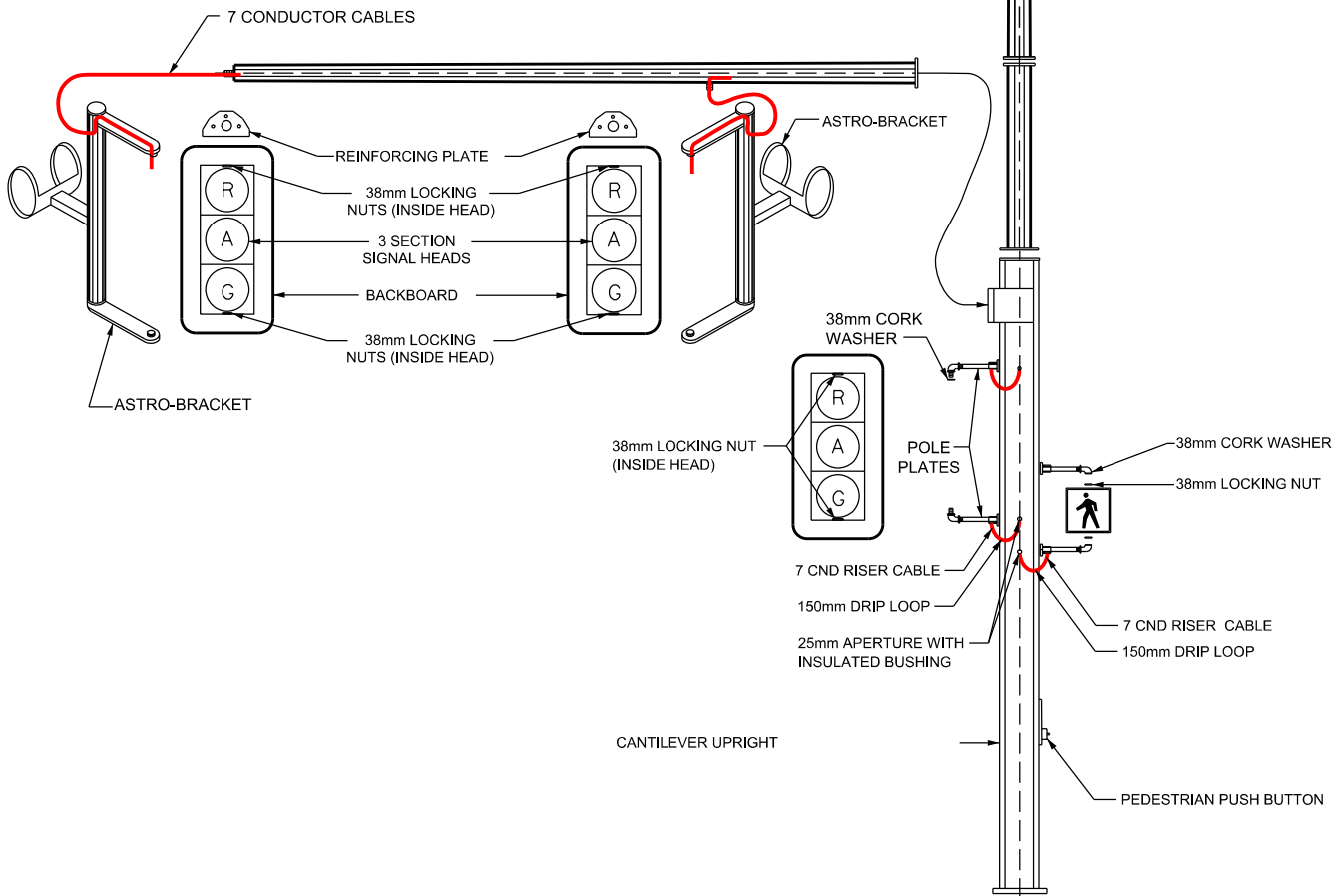
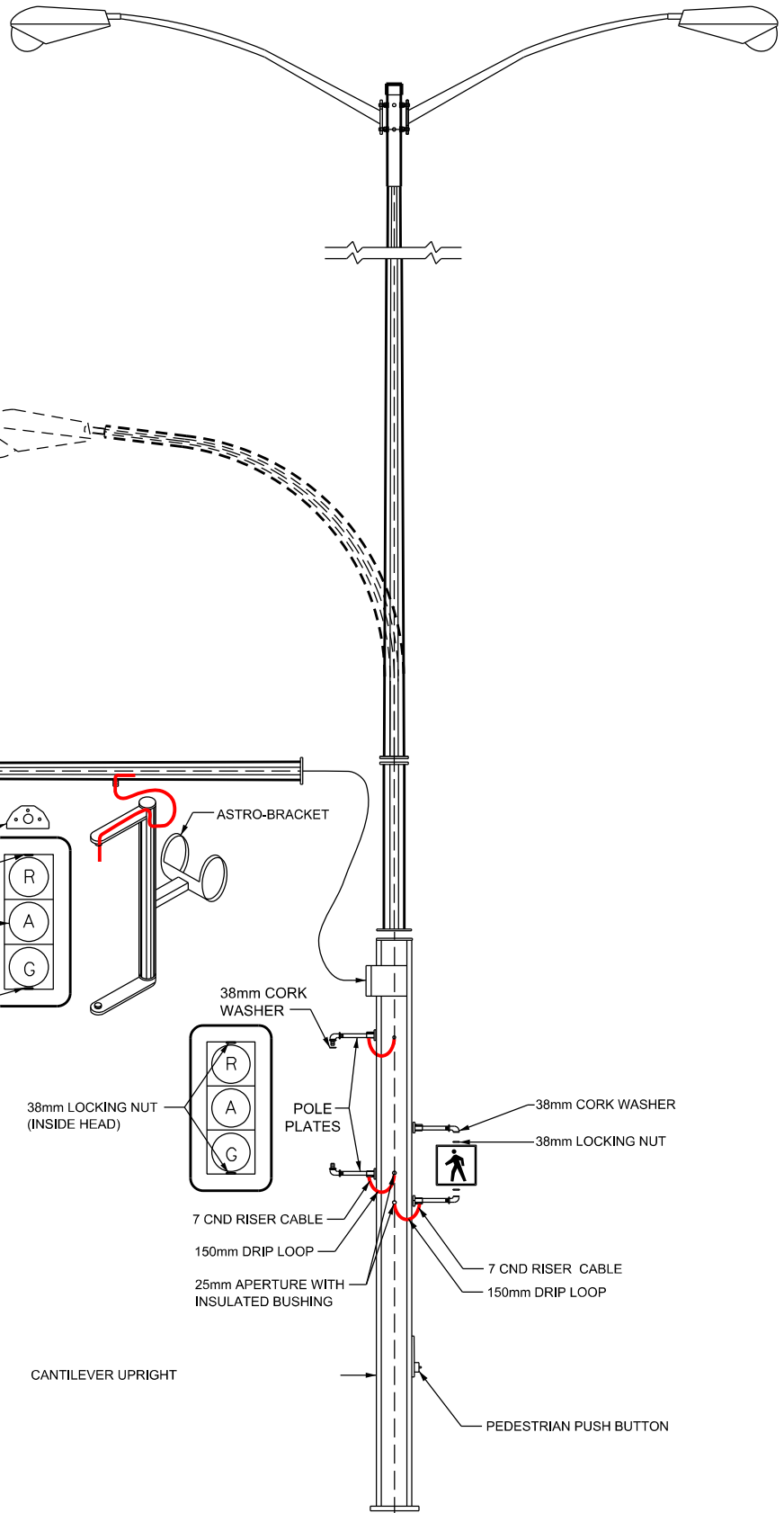
TRAFFIC AND PEDESTRIAN SIGNAL HEADS SHALL BE ASSEMBLED, INSTALLED AND CONNECTED BY THE CONTRACTOR AS SHOWN ON LOCATION DRAWINGS.

**SUPPORT STRAPPING:**


SUPPORT STRAPPING SHALL BE STEEL, HEAVY DUTY "SIGNODE" TYPE Z.R. COATED/GALVANIZED 19mm WIDE/0.61mm THICK. CLIP FASTENERS SHALL BE STEEL HEAVY DUTY "SIGNODE" TYPE 703 COATED/GALVANIZED. (SUBSTITUTES MAY BE APPROVED BY THE ENGINEER)

**PEDESTRIAN PUSH BUTTONS:**

PEDESTRIAN PUSH BUTTONS SHALL BE ASSEMBLED, INSTALLED AND CONNECTED BY THE CONTRACTOR AS SHOWN ON LOCATION DRAWINGS. A 25 mm APERTURE SHALL BE FIELD DRILLED BY THE CONTRACTOR AND FITTED WITH AN INSULATED BUSHING TO ALLOW ACCESS FOR WIRING.



REVISIONS	DATE	DESCRIPTION	BY

**Manitoba**   
 Infrastructure and  
 Transportation  
 TRAFFIC ENGINEERING

COMBINATION LUMINAIRE HEAVY  
 SERIES CANTILEVER (Type 7)

ORIGINAL  
 APPROVED BY:           LUCIEN GAGNON          

SCALE: N.T.S.  
 DATE: SEPT/06  
 PREP. BY: H.A.E.  
 E-112f