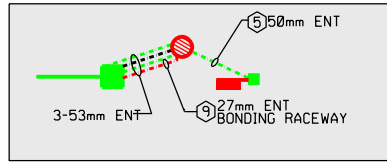
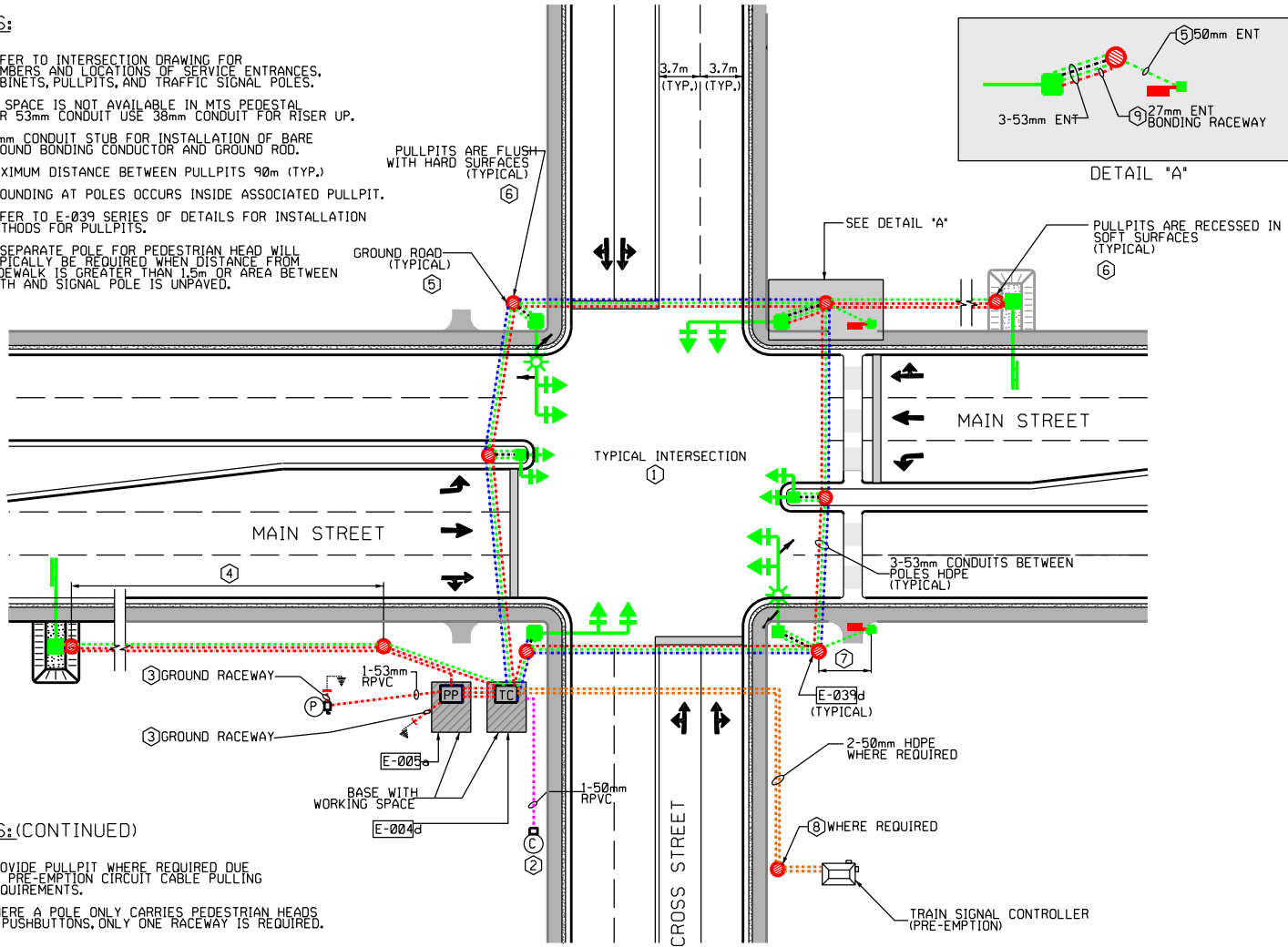


**NOTES:**

- ① REFER TO INTERSECTION DRAWING FOR NUMBERS AND LOCATIONS OF SERVICE ENTRANCES, CABINETS, PULLPITS, AND TRAFFIC SIGNAL POLES.
- ② IF SPACE IS NOT AVAILABLE IN MTS PEDESTAL FOR 53mm CONDUIT USE 38mm CONDUIT FOR RISER UP.
- ③ 21mm CONDUIT STUB FOR INSTALLATION OF BARE GROUND BONDING CONDUCTOR AND GROUND ROD.
- ④ MAXIMUM DISTANCE BETWEEN PULLPITS 90m (TYP.)
- ⑤ GROUNDING AT POLES OCCURS INSIDE ASSOCIATED PULLPIT.
- ⑥ REFER TO E-039 SERIES OF DETAILS FOR INSTALLATION METHODS FOR PULLPITS.
- ⑦ A SEPARATE POLE FOR PEDESTRIAN HEAD WILL TYPICALLY BE REQUIRED WHEN DISTANCE FROM SIDEWALK IS GREATER THAN 1.5m OR AREA BETWEEN PATH AND SIGNAL POLE IS UNPAVED.

**NOTES: (CONTINUED)**

- ⑧ PROVIDE PULLPIT WHERE REQUIRED DUE TO PRE-EMPTION CIRCUIT CABLE PULLING REQUIREMENTS.
- ⑨ WHERE A POLE ONLY CARRIES PEDESTRIAN HEADS & PUSHBUTTONS, ONLY ONE RACEWAY IS REQUIRED.



**SYMBOLS:**

- PULLPIT
- TRAFFIC SIGNAL CONTROLLER BASE
- POWER PEDESTAL
- POWER SERVICE ENTRANCE AND DISCONNECT ON POLE
- COMMUNICATION SERVICE ENTRANCE POLE / PEDESTAL
- SIGNALING RACEWAY
- POWER RACEWAY
- DETECTION RACEWAY
- COMMUNICATION RACEWAY
- COMBINED DETECTION AND POWER RACEWAY
- PRE-EMPTION RACEWAY
- DETECTION HEAD
- PEDESTRIAN HEAD WITH COUNTDOWN TIMER
- TRAFFIC SIGNAL POLE
- TRAFFIC SIGNAL AND ILLUMINATION
- ACTIVE ADVANCE WARNING SYSTEM POLE

**REFERENCE DRAWINGS:**

- TYPE IV CONTROLLER AND POWER PEDESTAL BASE WITH WORKING SPACE
- INSTALLATIONS

REVISIONS	DESCRIPTION	BY	DATE



**TYPICAL INTERSECTION CONDUITS AND CABLING**

ORIGINAL APPROVED BY: \_\_\_\_\_

SCALE:	N.T.S.
DATE:	08-2018
PREP. BY:	L.B.
PAGE	1 OF 2
<b>E-014d</b>	