

FOR NOSEPIECE ATTACHMENT:
 REMOVE EXISTING 5/8" Ø BOLTS (4 TOTAL)
 AND RE-INSERT THROUGH NOSEPIECE.

TRACC BILL OF MATERIAL

PART NUMBER	QTY	DESCRIPTION
25980A	1	TRACC UNIT (FULLY ASSEMBLED)
3310G	4	5/8" LOCKWASHER
4451G	4	5/8" x 6" WEDGE EXP ANCHOR
6668B	4	REFLECTIVE TAPE
6531B	1	PLASTIC NOSEPIECE
** ANCHOR HARDWARE (FULL CONCRETE BASE)		
5225G	26	5/8" x 7 1/2" HAS ROD
3310G	26	5/8" LOCKWASHER
3361G	26	5/8" HEX NUT
3300G	26	5/8" FLAT WASHER
118710B	4	ADHESIVE HIT HY 200(CARTRIDGE)
** ANCHOR HARDWARE (ASPHALT BASE)		
6380G	26	5/8" x 18" ALL THD ROD
3310G	26	5/8" LOCKWASHER
3361G	26	5/8" HEX NUT
3300G	26	5/8" FLAT WASHER
118710B	8	ADHESIVE HIT HY 200(CARTRIDGE)

EACH TRACC UNIT SHIPS 100% ASSEMBLED
 (PLASTIC NOSE INSTALLED AFTER PLACEMENT)

REF. CAN#
33556G

REF. CAN#
33556G

OPTIONAL TRACC ANCHOR ITEMS

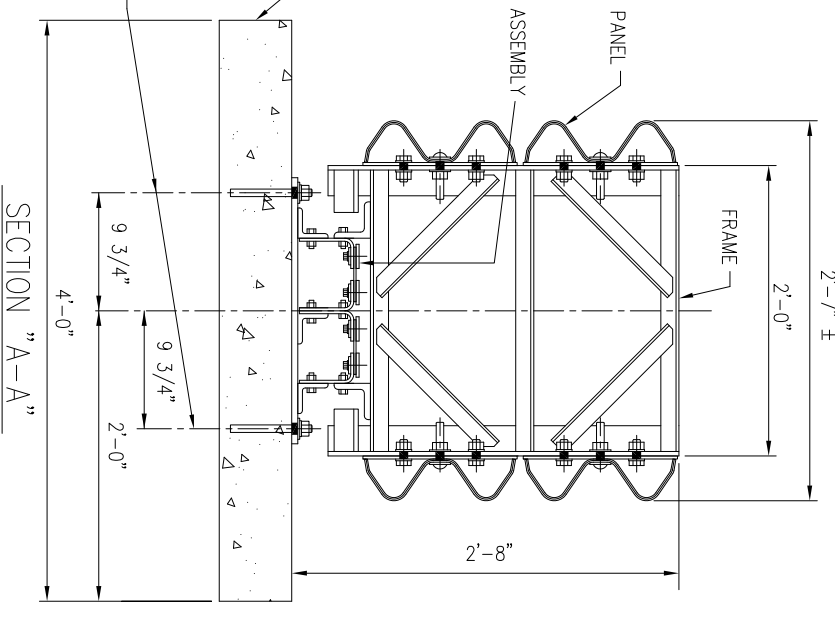
PART NUMBER	DESCRIPTION
118711B	ADHESIVE DISPENSER
5450B	MIXER (NOZZLE)
5208B	FILLER TUBE
5209B	BIT TE-C+ 11/16-18 (11/16" Ø BIT)

** SEE PRODUCT MANUAL

★ EACH CARTRIDGE INCLUDES 1 EACH: MIXER NOZZLE
 FILLER TUBE

REINFORCED CONCRETE PAD
 4'-0" x 6" THICK
 (SEE FOUNDATION NOTE)

ADHESIVE ANCHORED
 5/8" Ø x 7 1/2" LG ANCHOR STUD
 5/8" FLAT WASHER
 5/8" LOCKWASHER
 5/8" HEX NUT



FOUNDATION NOTE:

- 6" REINFORCED CONCRETE PAD IS SHOWN
 OTHER OPTIONS ARE :
- a) 8" THICK MINIMUM UNREINFORCED CONCRETE
 - b) 8" MINIMUM THICK ASPHALT
 - c) 3" THICK (MIN) ASPHALT OVER 3" (MIN) CONCRETE
 - d) 6" THICK ASPHALT OVER 6" COMPACTED SUBBASE.

ATTACHMENT SHOWN IS TO SHAPES WITH
 RECTANGULAR CROSS SECTIONS SUCH AS:
 PIERS, PARAPETS AND MODIFIED CONCRETE
 BARRIER. TRAFFIC FLOW IS UNIDIRECTIONAL.
 ATTACHMENTS AND TRANSITIONS TO OTHER
 SHAPES, BARRIERS, RAILINGS AND
 BIDIRECTIONAL TRAFFIC FLOWS ARE AVAILABLE.

The drawings and the information shown thereon are copyrighted by Trinity Highway Products (2009) and the sole property of Trinity Highway Products. Neither the drawings nor such information is to be used for any purpose other than that for which it was specifically furnished from Trinity Highway Products, LLC., nor is any reproduction authorized without written permission.

3	JM	SMY	10/10/14	REVISED ADHESIVE CARTRIDGE AND DISPENSER PART NUMBERS, ECO #3809
2	BT	LH	7/13/09	ADDED CAN NUMBERS; REVISED ANCHOR PWS/QTY; TITLE BLOCK
1	LH	LH	5/12/06	REVISED NOSEPIECE & REFLECTIVE TAPE PART NUMBERS

REV: CHK'D BY DATE

REMARKS

TRACC

CRASH-CUSHION ATTENUATING TERMINAL
 PLAN, ELEVATION & SECTIONS
 (UNIDIRECTIONAL, DIRECT ATTACHMENT)

TRINITY HIGHWAY PRODUCTS, LLC.
 2525 STEMMONS FREEWAY
 DALLAS, TX 75207

DRG. FILE # SS1003-01E
 SCALE N.T.S.
 DATE 04/25/05

SHR. NO. E1 OF 1
 DRAWING NO. SS 1003
 REV. 3