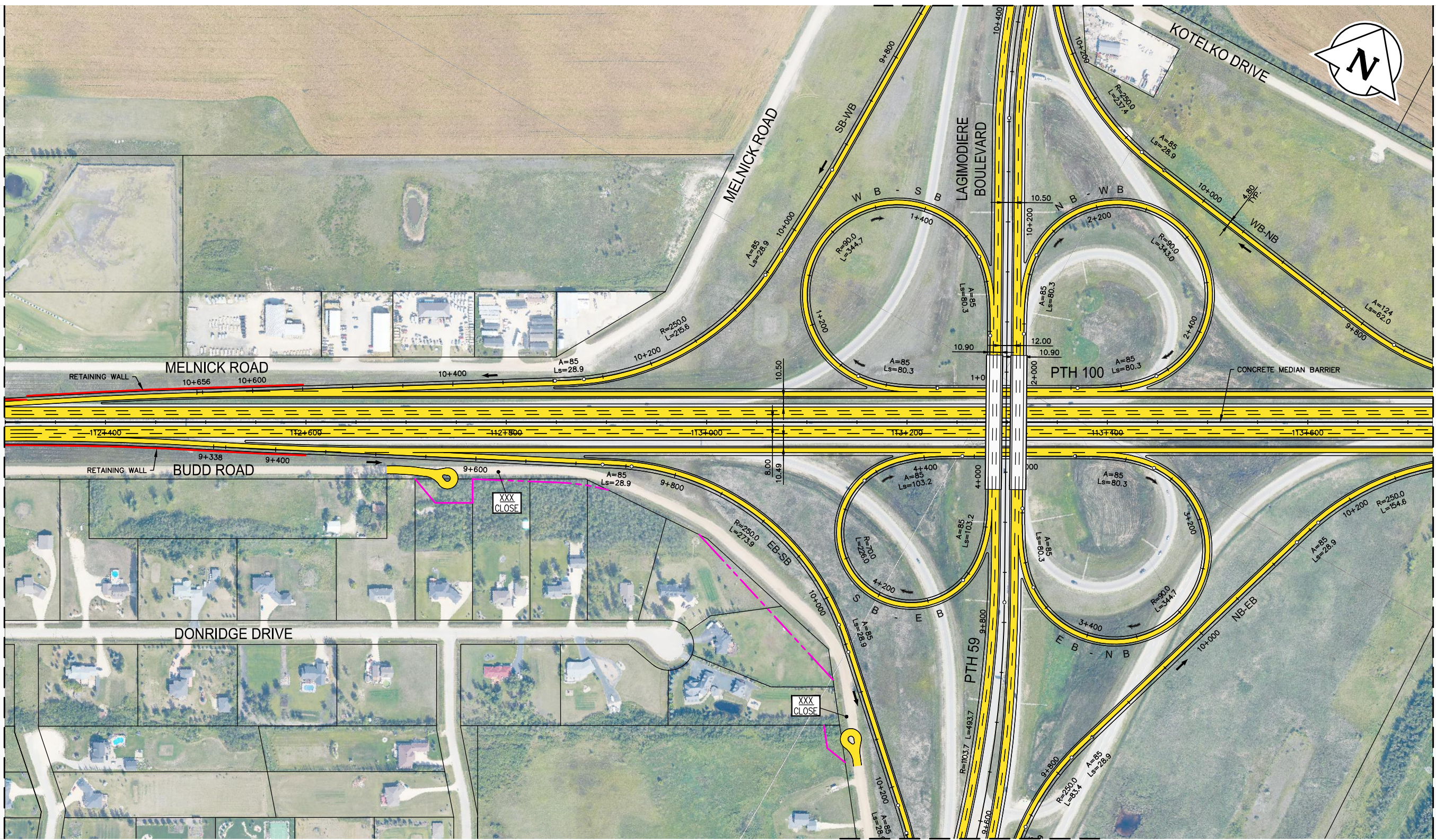




MATCH TO SHEET NO. 33

MATCH TO SHEET NO. 37



MATCH TO SHEET NO. 35

LEGEND-PLAN:

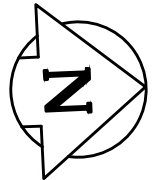
- EXISTING PROPERTY LINE
- PROPOSED PROPERTY LINE
- RETAINING WALL
- RAIL
- PROPOSED ROADWAY
- MULTI-USE TRAIL
- ROAD CLOSURE

METRIC
ALL MEASUREMENTS METRES,
UNLESS STATED OTHERWISE

NOTE:
These design documents are prepared solely for the use by the party with whom the design professional has entered into a contract and there are no representations of any kind made by the design professional to any party with whom the design professional has not entered into a contract.

WSP Canada Group Limited
Suite 111 - 93 Lombard Ave
Winnipeg, MB R3B 3B1
t. 204.943.3178
f. 204.943.4948
www.wsp.com

MANITOBA INFRASTRUCTURE			
SOUTH PERIMETER HIGHWAY DESIGN STUDY			
ULTIMATE STAGE PLANS			
PTH 100 AT PTH 59 (LAGIMODIERE BOULEVARD)			
SCALE:	DATE:	DWG. No.	SHEET. No.
1:4000	20-06-26	ULT-100-A	34 OF 44



MATCH TO SHEET NO. 34

LEGEND-PLAN:

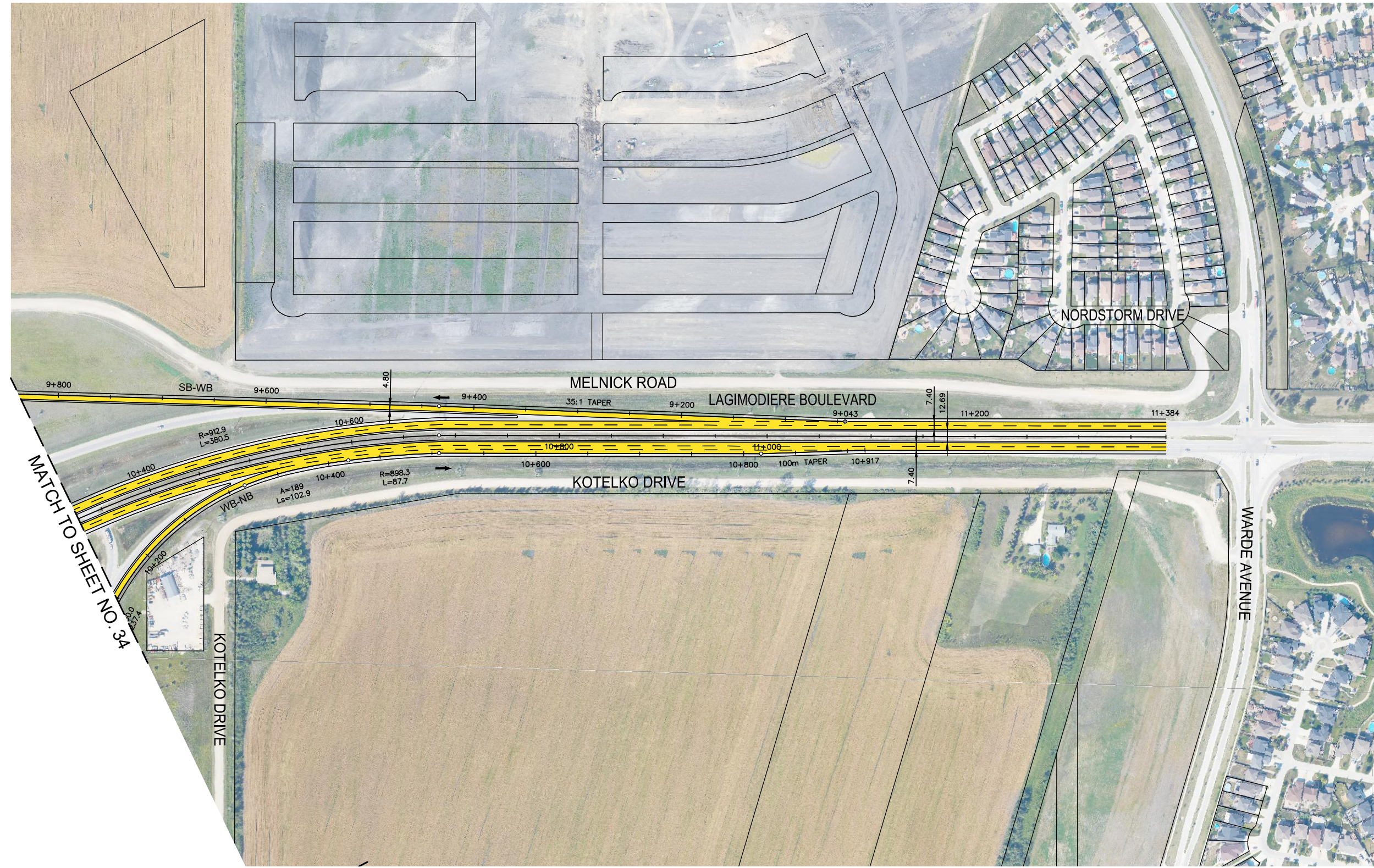
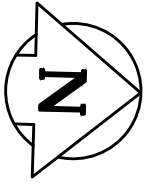
- | | | | |
|------------------------|--|------------------|--|
| EXISTING PROPERTY LINE | | PROPOSED ROADWAY | |
| PROPOSED PROPERTY LINE | | MULTI-USE TRAIL | |
| RETAINING WALL | | ROAD CLOSURE | |
| RAIL | | | |

NOTE:
These design documents are prepared solely for the use by the party with whom the design professional has entered into a contract and there are no representations of any kind made by the design professional to any party with whom the design professional has not entered into a contract.

METRIC
ALL MEASUREMENTS METRES,
UNLESS STATED OTHERWISE

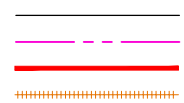
WSP Canada Group Limited
Suite 111 - 93 Lombard Ave
Winnipeg, MB R3B 3B1
t. 204.943.3178
f. 204.943.4948
www.wsp.com

MANITOBA INFRASTRUCTURE			
SOUTH PERIMETER HIGHWAY DESIGN STUDY			
ULTIMATE STAGE PLANS			
PTH 59 SOUTH OF PTH 100			
SCALE: 1:4000	DATE: 20-06-26	DWG. No. ULT-100-A	SHEET. No. 35 OF 44

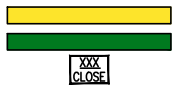


LEGEND-PLAN:

- EXISTING PROPERTY LINE
- PROPOSED PROPERTY LINE
- RETAINING WALL
- RAIL



- PROPOSED ROADWAY
- MULTI-USE TRAIL
- ROAD CLOSURE

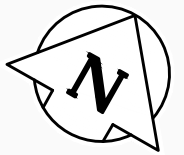


NOTE:
These design documents are prepared solely for the use by the party with whom the design professional has entered into a contract and there are no representations of any kind made by the design professional to any party with whom the design professional has not entered into a contract.

METRIC
ALL MEASUREMENTS METRES,
UNLESS STATED OTHERWISE

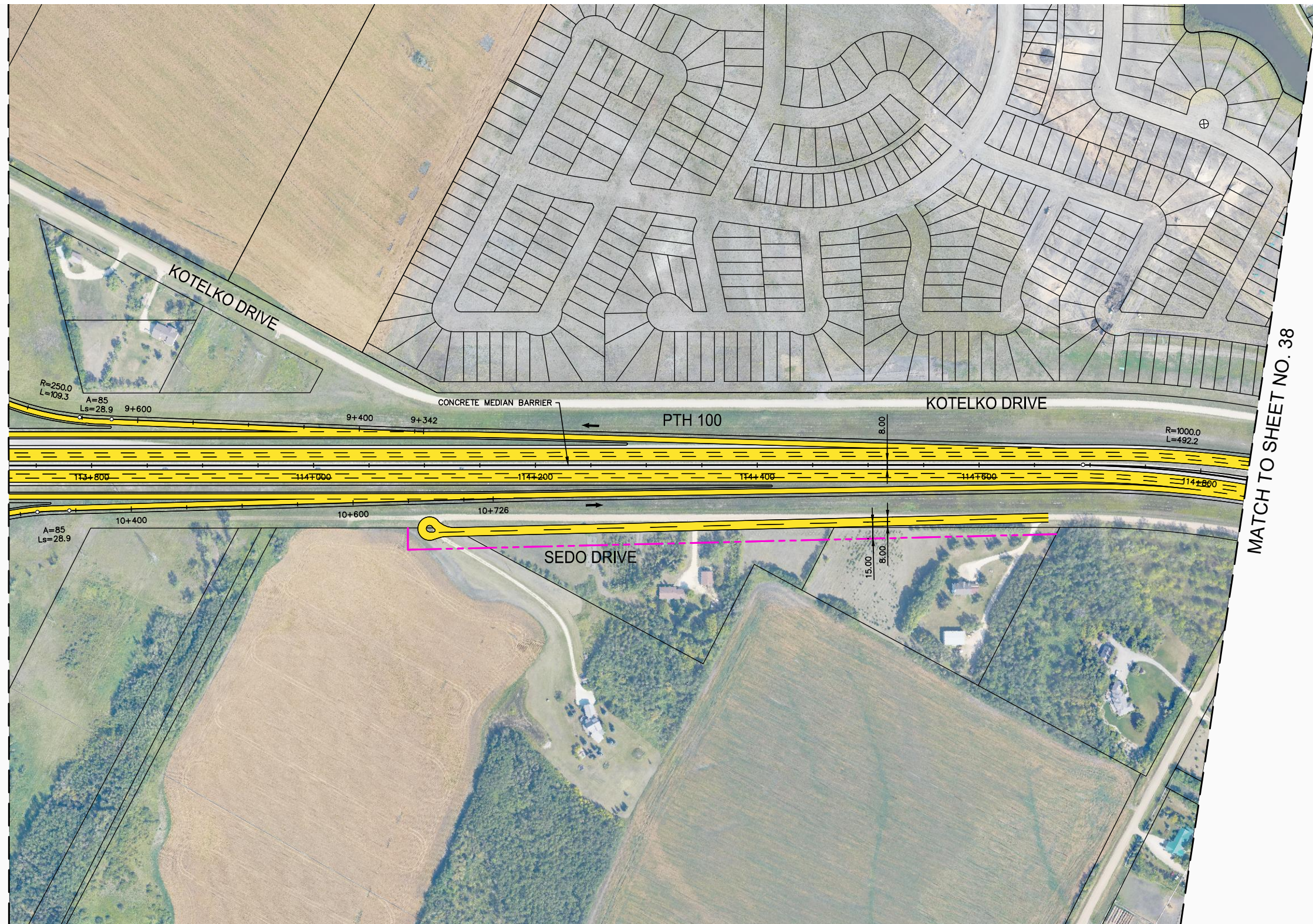
WSP Canada Group Limited
Suite 111 - 93 Lombard Ave
Winnipeg, MB R3B 3B1
t. 204.943.3178
f. 204.943.4948
www.wsp.com

MANITOBA INFRASTRUCTURE			
SOUTH PERIMETER HIGHWAY DESIGN STUDY			
ULTIMATE STAGE PLANS			
PTH 59 NORTH OF PTH 100			
SCALE: 1:4000	DATE: 20-06-26	DWG. No. ULT-100-A	SHEET. No. 36 OF 44



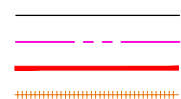
MATCH TO SHEET NO. 34

MATCH TO SHEET NO. 38

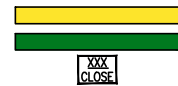


LEGEND-PLAN:

- EXISTING PROPERTY LINE
- PROPOSED PROPERTY LINE
- RETAINING WALL
- RAIL



- PROPOSED ROADWAY
- MULTI-USE TRAIL
- ROAD CLOSURE

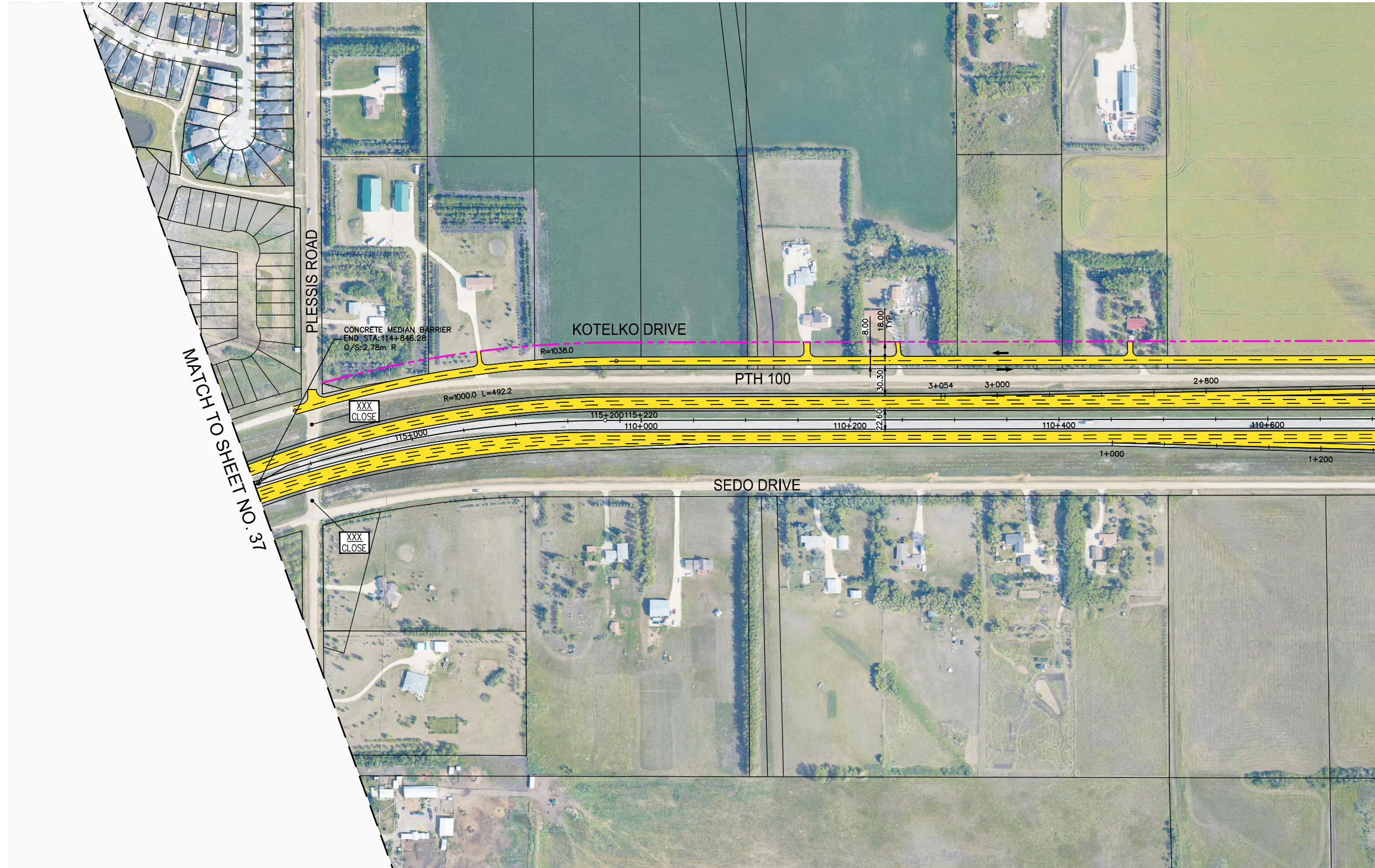
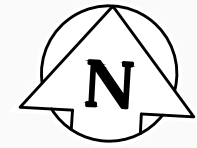


NOTE:
These design documents are prepared solely for the use by the party with whom the design professional has entered into a contract and there are no representations of any kind made by the design professional to any party with whom the design professional has not entered into a contract.

METRIC
ALL MEASUREMENTS METRES,
UNLESS STATED OTHERWISE

WSP Canada Group Limited
Suite 111 - 93 Lombard Ave
Winnipeg, MB R3B 3B1
t. 204.943.3178
f. 204.943.4948
www.wsp.com

MANITOBA INFRASTRUCTURE			
SOUTH PERIMETER HIGHWAY DESIGN STUDY			
ULTIMATE STAGE PLANS			
PTH 100			
SCALE:	DATE:	DWG. No.	SHEET. No.
1:4000	20-06-26	ULT-100-A	37 OF 44

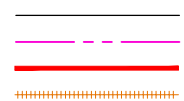


MATCH TO SHEET NO. 39

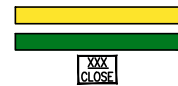
MATCH TO SHEET NO. 37

LEGEND-PLAN:

- EXISTING PROPERTY LINE
- PROPOSED PROPERTY LINE
- RETAINING WALL
- RAIL



- PROPOSED ROADWAY
- MULTI-USE TRAIL
- ROAD CLOSURE



NOTE:
These design documents are prepared solely for the use by the party with whom the design professional has entered into a contract and there are no representations of any kind made by the design professional to any party with whom the design professional has not entered into a contract.

METRIC
ALL MEASUREMENTS METRES,
UNLESS STATED OTHERWISE

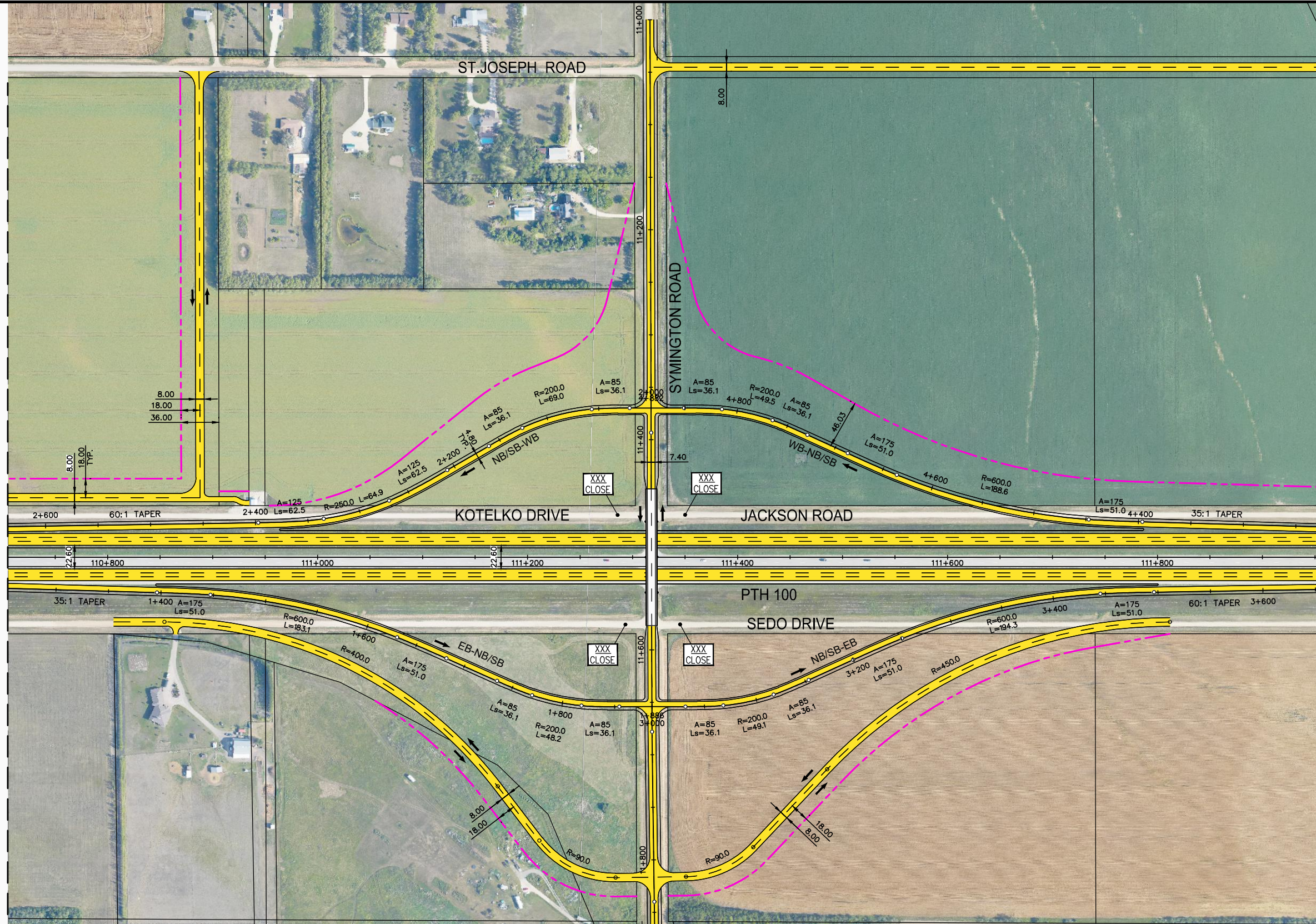
WSP Canada Group Limited
Suite 111 - 93 Lombard Ave
Winnipeg, MB R3B 3B1
t. 204.943.3178
f. 204.943.4948
www.wsp.com

MANITOBA INFRASTRUCTURE			
SOUTH PERIMETER HIGHWAY DESIGN STUDY			
ULTIMATE STAGE PLANS			
PTH 100			
SCALE:	DATE:	DWG. No.	SHEET. No.
1:4000	20-06-26	ULT-100-A	38 OF 44



MATCH TO SHEET NO. 38

MATCH TO SHEET NO. 40



LEGEND-PLAN:

- EXISTING PROPERTY LINE
- PROPOSED PROPERTY LINE
- RETAINING WALL
- RAIL
- PROPOSED ROADWAY
- MULTI-USE TRAIL
- ROAD CLOSURE XXX
CLOSE

NOTE:
These design documents are prepared solely for the use by the party with whom the design professional has entered into a contract and there are no representations of any kind made by the design professional to any party with whom the design professional has not entered into a contract.

METRIC
ALL MEASUREMENTS METRES,
UNLESS STATED OTHERWISE



WSP Canada Group Limited
Suite 111 - 93 Lombard Ave
Winnipeg, MB R3B 3B1
t. 204.943.3178
f. 204.943.4948
www.wsp.com

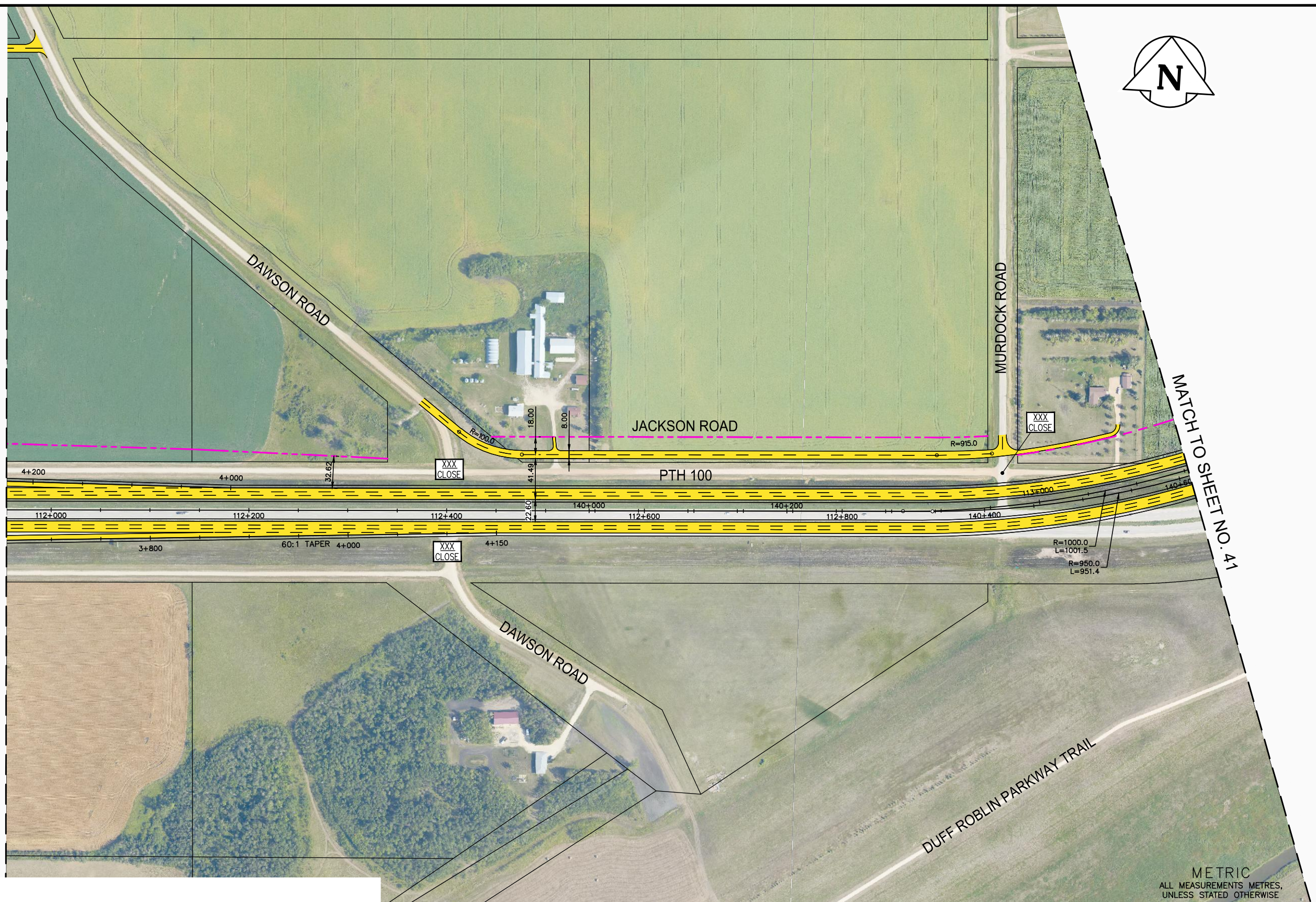
**MANITOBA INFRASTRUCTURE
SOUTH PERIMETER HIGHWAY DESIGN STUDY
ULTIMATE STAGE PLANS
PTH 100 AT SYMINGTON ROAD**

SCALE: 1:4000	DATE: 20-06-26	DWG. No. ULT-100-A	SHEET. No. 39 OF 44
------------------	-------------------	-----------------------	------------------------



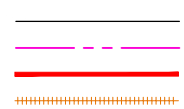
MATCH TO SHEET NO. 39

MATCH TO SHEET NO. 41

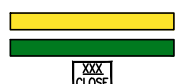


LEGEND-PLAN:

- EXISTING PROPERTY LINE
- PROPOSED PROPERTY LINE
- RETAINING WALL
- RAIL



- PROPOSED ROADWAY
- MULTI-USE TRAIL
- ROAD CLOSURE



NOTE:
These design documents are prepared solely for the use by the party with whom the design professional has entered into a contract and there are no representations of any kind made by the design professional to any party with whom the design professional has not entered into a contract.

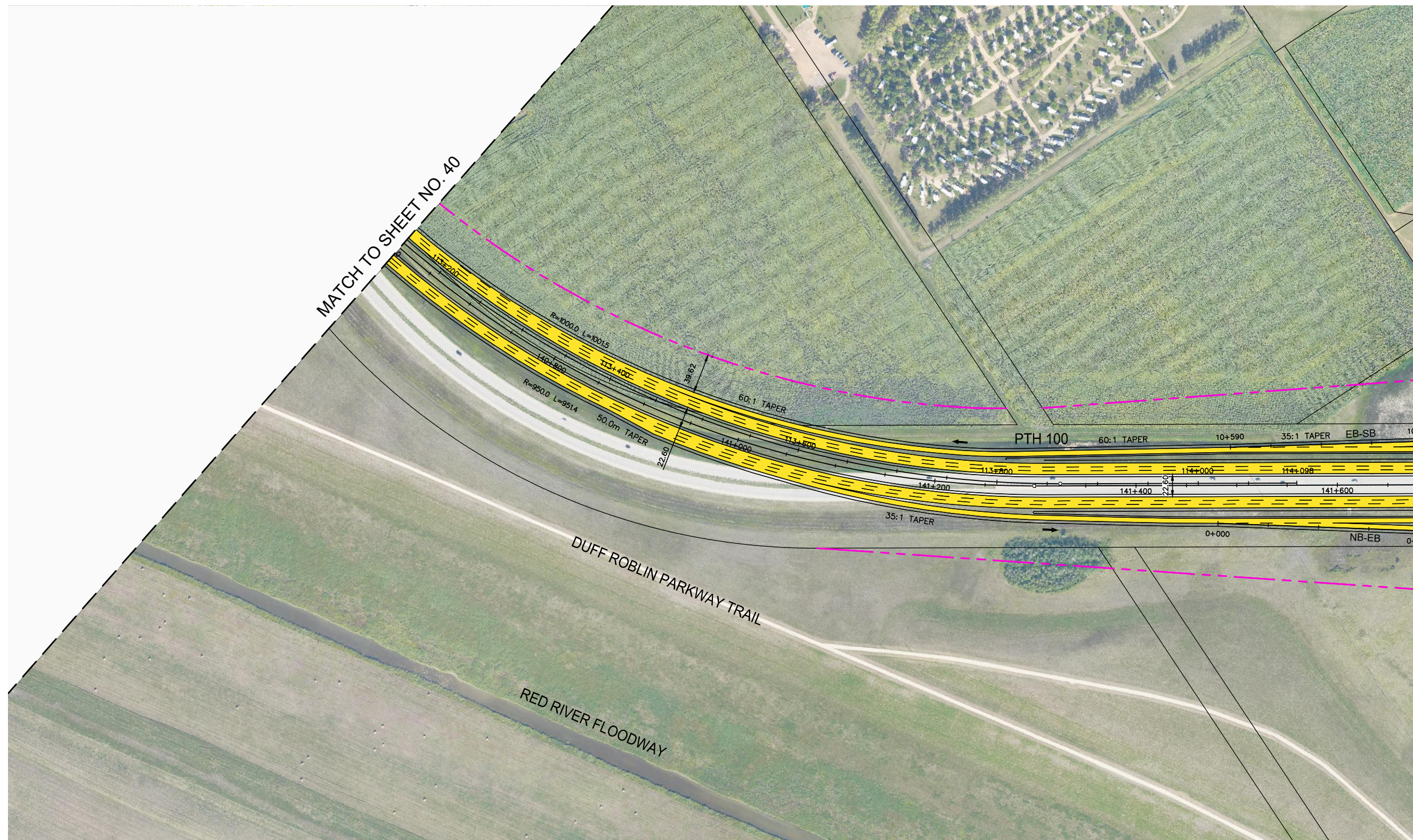
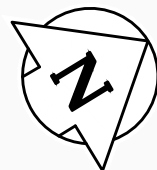


WSP Canada Group Limited
Suite 111 - 93 Lombard Ave
Winnipeg, MB R3B 3B1
t. 204.943.3178
f. 204.943.4948
www.wsp.com

MANITOBA INFRASTRUCTURE
SOUTH PERIMETER HIGHWAY DESIGN STUDY
ULTIMATE STAGE PLANS
PTH 100

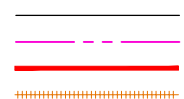
SCALE: 1:4000	DATE: 20-06-26	DWG. No. ULT-100-A	SHEET. No. 40 OF 44
------------------	-------------------	-----------------------	------------------------

METRIC
ALL MEASUREMENTS METRES,
UNLESS STATED OTHERWISE

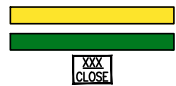


LEGEND-PLAN:

EXISTING PROPERTY LINE
 PROPOSED PROPERTY LINE
 RETAINING WALL
 RAIL



PROPOSED ROADWAY
 MULTI-USE TRAIL
 ROAD CLOSURE



NOTE:
 These design documents are prepared solely for the use by the party with whom the design professional has entered into a contract and there are no representations of any kind made by the design professional to any party with whom the design professional has not entered into a contract.

METRIC
 ALL MEASUREMENTS METRES,
 UNLESS STATED OTHERWISE



WSP Canada Group Limited
 Suite 111 - 93 Lombard Ave
 Winnipeg, MB R3B 3B1
 t. 204.943.3178
 f. 204.943.4948
 www.wsp.com

MANITOBA INFRASTRUCTURE
SOUTH PERIMETER HIGHWAY DESIGN STUDY
ULTIMATE STAGE PLANS
PTH 100

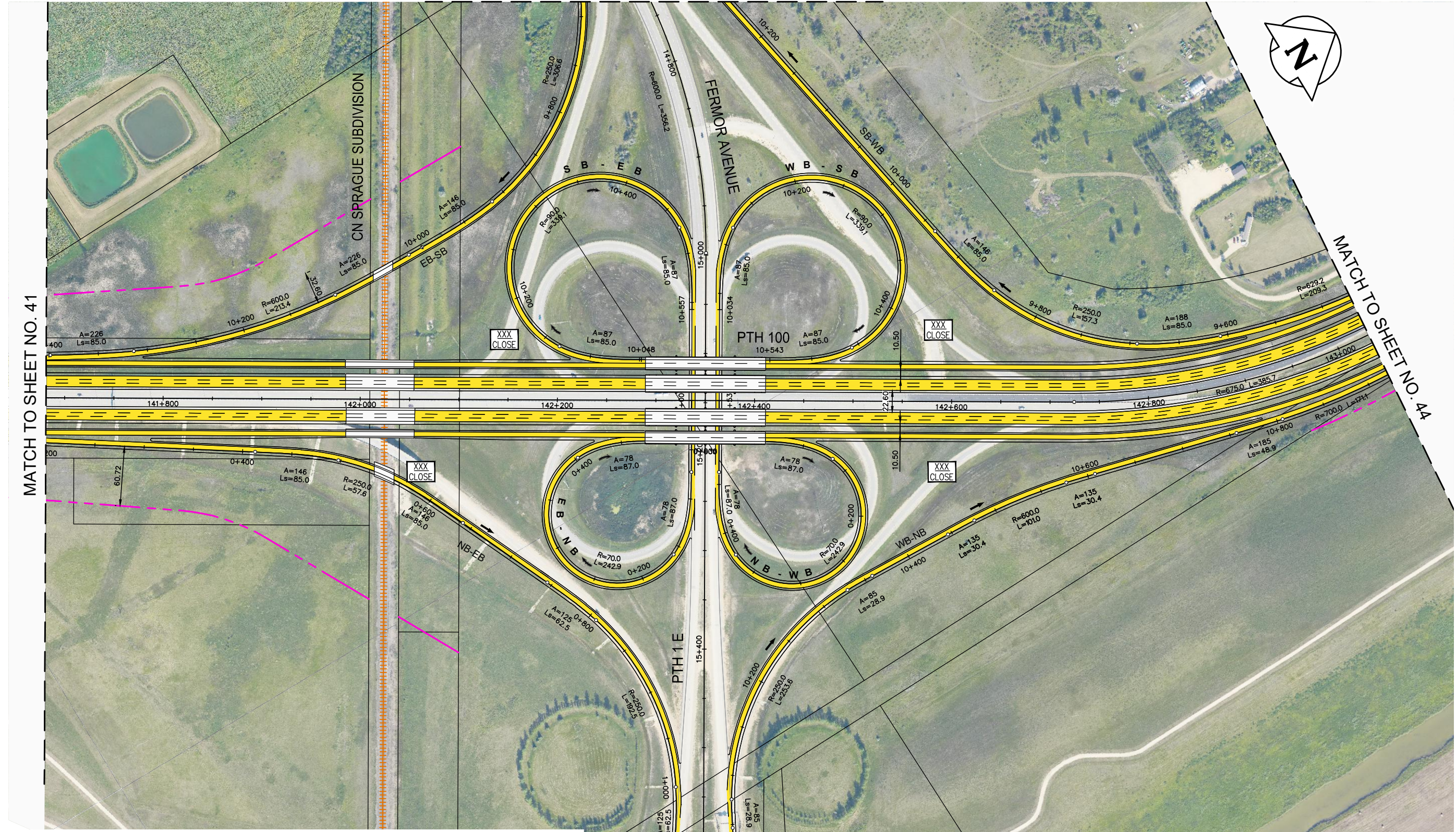
SCALE: 1:4000	DATE: 20-06-26	DWG. No. ULT-100-A	SHEET. No. 41 OF 44
------------------	-------------------	-----------------------	------------------------

MATCH TO SHEET NO. 43



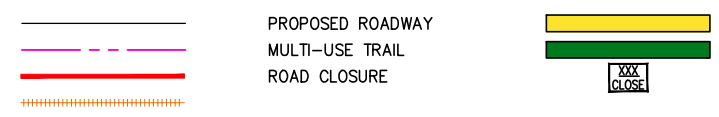
MATCH TO SHEET NO. 41

MATCH TO SHEET NO. 4A



LEGEND-PLAN:

- EXISTING PROPERTY LINE
- PROPOSED PROPERTY LINE
- RETAINING WALL
- RAIL
- PROPOSED ROADWAY
- MULTI-USE TRAIL
- ROAD CLOSURE



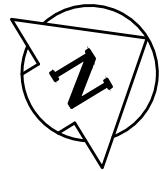
NOTE:
These design documents are prepared solely for the use by the party with whom the design professional has entered into a contract and there are no representations of any kind made by the design professional to any party with whom the design professional has not entered into a contract.

METRIC
ALL MEASUREMENTS METRES,
UNLESS STATED OTHERWISE



WSP Canada Group Limited
Suite 111 - 93 Lombard Ave
Winnipeg, MB R3B 3B1
t. 204.943.3178
f. 204.943.4948
www.wsp.com

MANITOBA INFRASTRUCTURE			
SOUTH PERIMETER HIGHWAY DESIGN STUDY			
ULTIMATE STAGE PLANS			
PTH 100 AT PTH 1E (FERMOR AVENUE)			
SCALE: 1:4000	DATE: 20-06-26	DWG. No. ULT-100-A	SHEET. No. 42 OF 44



MATCH TO SHEET NO. 42

METRIC
ALL MEASUREMENTS METRES,
UNLESS STATED OTHERWISE

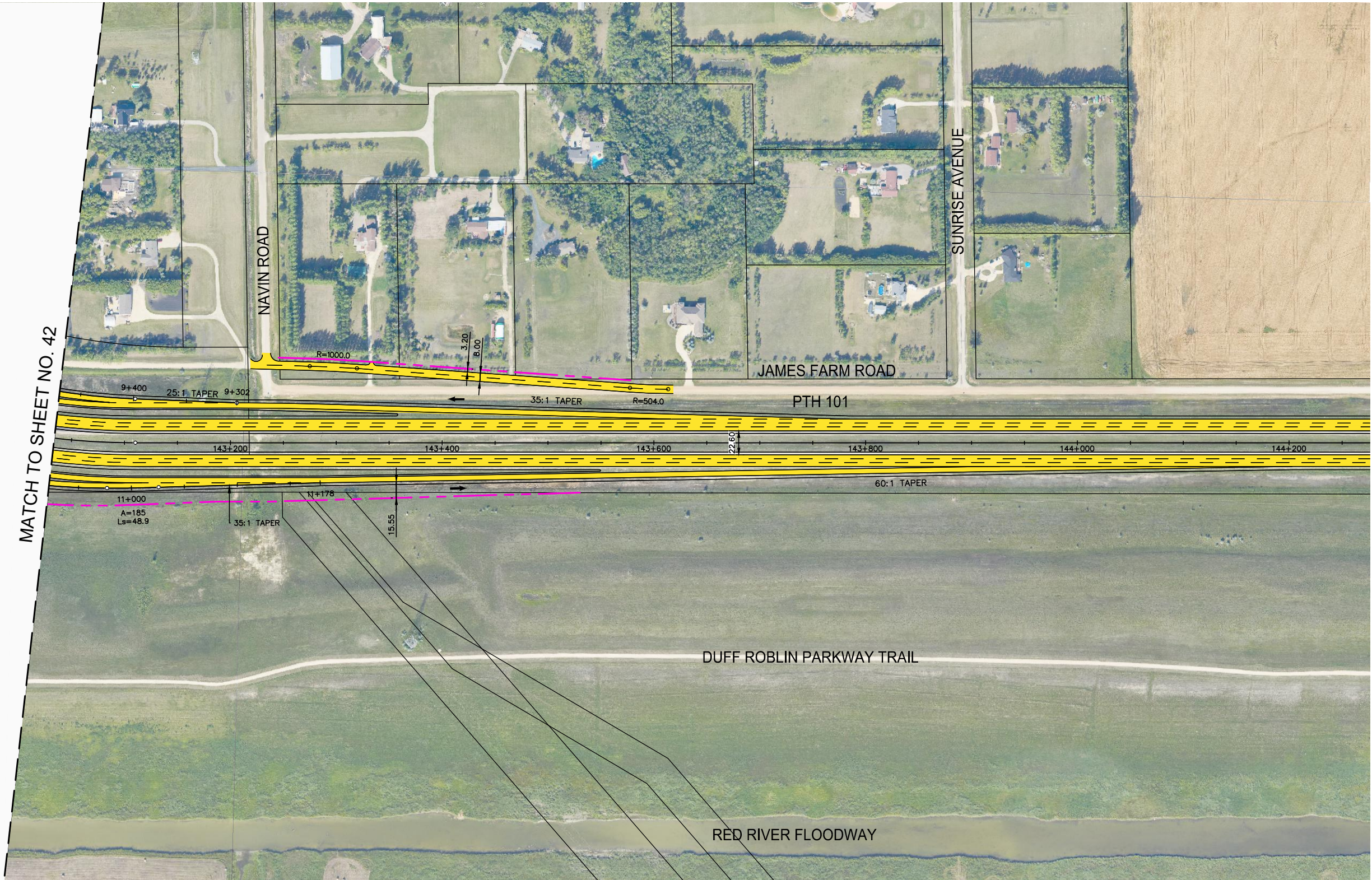
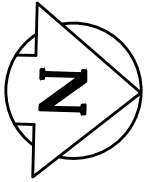
LEGEND-PLAN:

- EXISTING PROPERTY LINE
- PROPOSED PROPERTY LINE
- RETAINING WALL
- RAIL
- PROPOSED ROADWAY
- MULTI-USE TRAIL
- ROAD CLOSURE
- XX
CLOSE

NOTE:
These design documents are prepared solely for the use by the party with whom the design professional has entered into a contract and there are no representations of any kind made by the design professional to any party with whom the design professional has not entered into a contract.

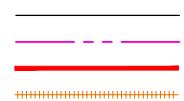
WSP Canada Group Limited
 Suite 111 - 93 Lombard Ave
 Winnipeg, MB R3B 3B1
 t. 204.943.3178
 f. 204.943.4948
 www.wsp.com

MANITOBA INFRASTRUCTURE SOUTH PERIMETER HIGHWAY DESIGN STUDY ULTIMATE STAGE PLANS PTH 1E NORTH OF PTH 100			
SCALE: 1:4000	DATE: 20-06-26	DWG. No. ULT-100-A	SHEET. No. 43 OF 44

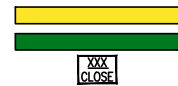


LEGEND-PLAN:

EXISTING PROPERTY LINE
 PROPOSED PROPERTY LINE
 RETAINING WALL
 RAIL



PROPOSED ROADWAY
 MULTI-USE TRAIL
 ROAD CLOSURE



NOTE:
 These design documents are prepared solely for the use by the party with whom the design professional has entered into a contract and there are no representations of any kind made by the design professional to any party with whom the design professional has not entered into a contract.

METRIC
 ALL MEASUREMENTS METRES,
 UNLESS STATED OTHERWISE



WSP Canada Group Limited
 Suite 111 - 93 Lombard Ave
 Winnipeg, MB R3B 3B1
 t. 204.943.3178
 f. 204.943.4948
 www.wsp.com

MANITOBA INFRASTRUCTURE SOUTH PERIMETER HIGHWAY DESIGN STUDY ULTIMATE STAGE PLANS PTH 100			
SCALE: 1:4000	DATE: 20-06-26	DWG. No. ULT-100-A	SHEET. No. 44 OF 44