

MATCH TO SHEET NO. 27

LEGEND-PLAN:

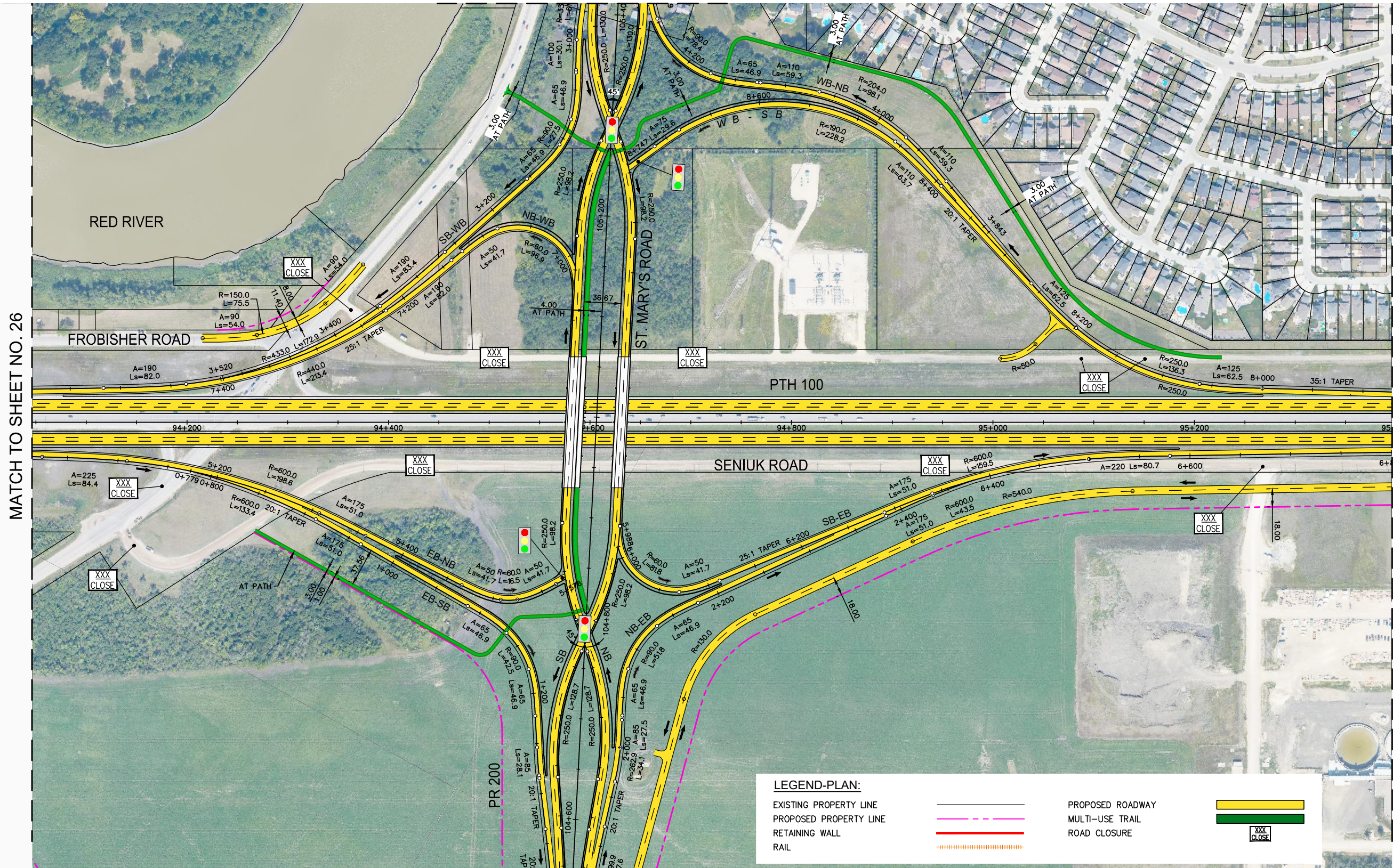
- EXISTING PROPERTY LINE
- PROPOSED PROPERTY LINE
- RETAINING WALL
- RAIL
- PROPOSED ROADWAY
- MULTI-USE TRAIL
- ROAD CLOSURE XXX
CLOSE

NOTE:
These design documents are prepared solely for the use by the party with whom the design professional has entered into a contract and there are no representations of any kind made by the design professional to any party with whom the design professional has not entered into a contract.

METRIC
ALL MEASUREMENTS METRES,
UNLESS STATED OTHERWISE

	WSP Canada Group Limited Suite 111 - 93 Lombard Ave Winnipeg, MB R3B 3B1 t. 204.943.3178 f. 204.943.4948 www.wsp.com		MANITOBA INFRASTRUCTURE SOUTH PERIMETER HIGHWAY DESIGN STUDY ULTIMATE STAGE PLANS PTH 100	
	SCALE: 1:4000	DATE: 20-06-26	DWG. No. ULT-100-A	SHEET. No. 26 OF 44

MATCH TO SHEET NO. 30



MATCH TO SHEET NO. 26

MATCH TO SHEET NO. 31


MATCH TO SHEET NO. 28

LEGEND-PLAN:

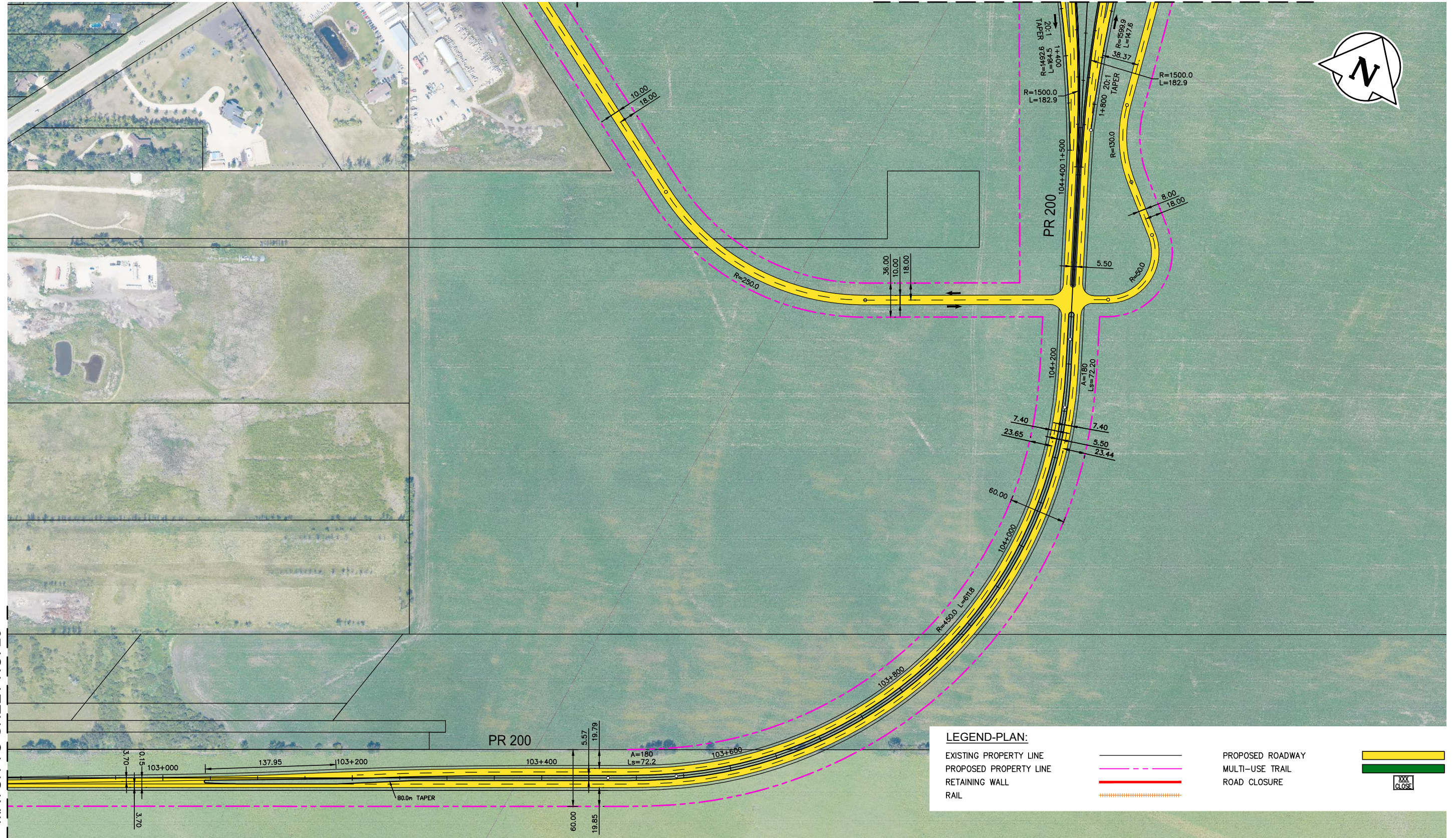
- EXISTING PROPERTY LINE (solid black line)
- PROPOSED PROPERTY LINE (dashed black line)
- RETAINING WALL (dashed red line)
- RAIL (dashed orange line)
- PROPOSED ROADWAY (yellow double line)
- MULTI-USE TRAIL (green double line)
- ROAD CLOSURE (yellow box with 'XXX CLOSE')

METRIC
ALL MEASUREMENTS METRES,
UNLESS STATED OTHERWISE

NOTE:
These design documents are prepared solely for the use by the party with whom the design professional has entered into a contract and there are no representations of any kind made by the design professional to any party with whom the design professional has not entered into a contract.

	WSP Canada Group Limited Suite 111 - 93 Lombard Ave Winnipeg, MB R3B 3B1 t. 204.943.3178 f. 204.943.4948 www.wsp.com		MANITOBA INFRASTRUCTURE SOUTH PERIMETER HIGHWAY DESIGN STUDY ULTIMATE STAGE PLANS PTH 100 AT ST.MARY'S ROAD	
	SCALE: 1:4000	DATE: 20-06-26	DWG. No. ULT-100-A	SHEET. No. 27 OF 44

MATCH TO SHEET NO. 27



MATCH TO SHEET NO. 29

LEGEND-PLAN:

- EXISTING PROPERTY LINE
- PROPOSED PROPERTY LINE
- RETAINING WALL
- RAIL
- PROPOSED ROADWAY
- MULTI-USE TRAIL
- ROAD CLOSURE
- XXX CLOSE

NOTE:
These design documents are prepared solely for the use by the party with whom the design professional has entered into a contract and there are no representations of any kind made by the design professional to any party with whom the design professional has not entered into a contract.

METRIC
ALL MEASUREMENTS METRES,
UNLESS STATED OTHERWISE

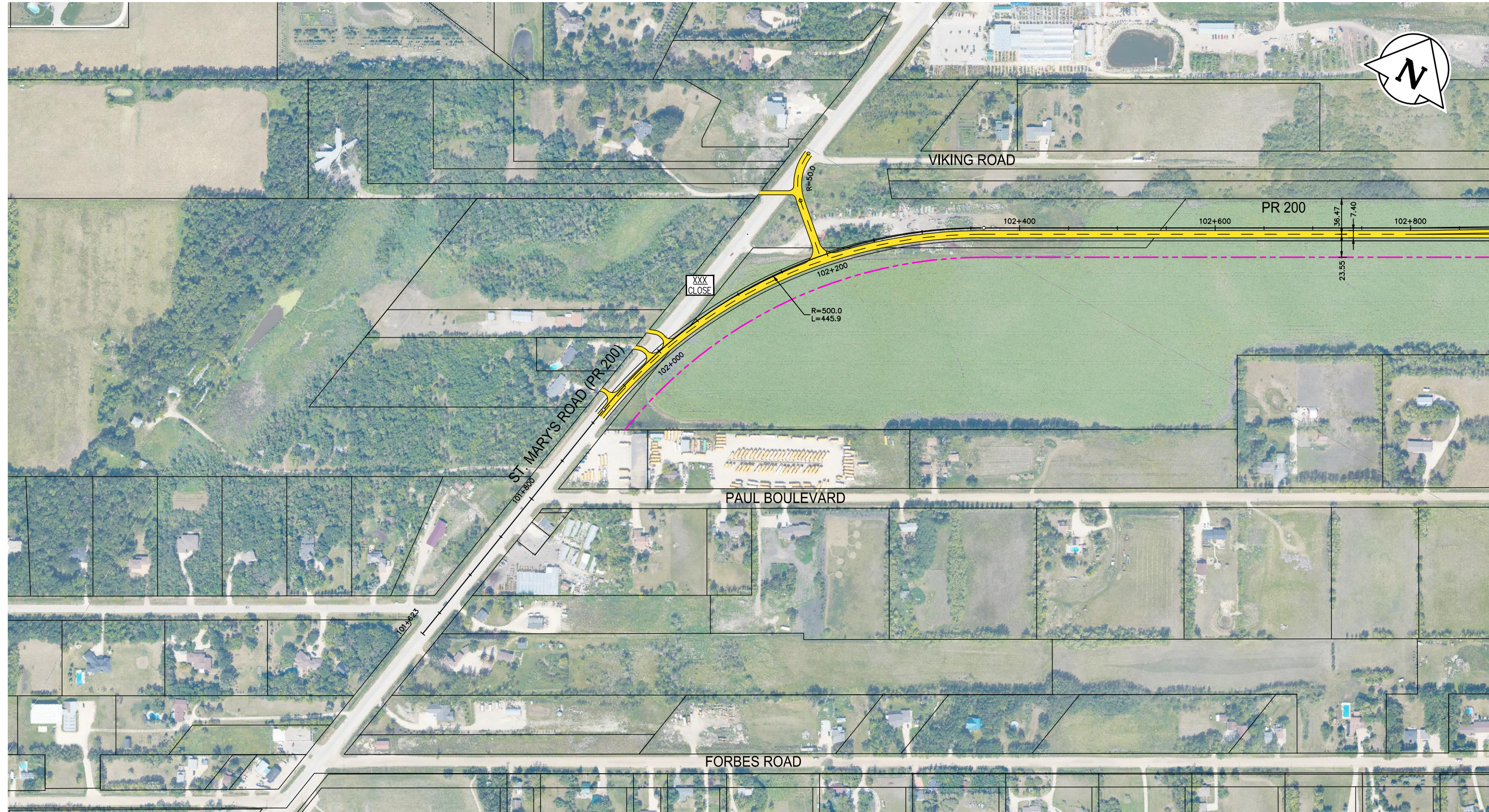


WSP Canada Group Limited
Suite 111 - 93 Lombard Ave
Winnipeg, MB R3B 3B1
t. 204.943.3178
f. 204.943.4948
www.wsp.com

MANITOBA INFRASTRUCTURE
SOUTH PERIMETER HIGHWAY DESIGN STUDY
ULTIMATE STAGE PLANS

ST.MARY'S ROAD (PR 200) SOUTH OF PTH 100

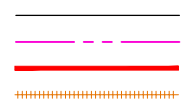
SCALE: 1:4000	DATE: 20-06-26	DWG. No. ULT-100-A	SHEET. No. 28 OF 44
------------------	-------------------	-----------------------	------------------------



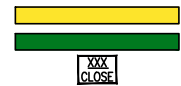
MATCH TO SHEET NO. 28

LEGEND-PLAN:

EXISTING PROPERTY LINE
 PROPOSED PROPERTY LINE
 RETAINING WALL
 RAIL



PROPOSED ROADWAY
 MULTI-USE TRAIL
 ROAD CLOSURE



METRIC
 ALL MEASUREMENTS METRES,
 UNLESS STATED OTHERWISE

NOTE:
 These design documents are prepared solely for the use by the party with whom the design professional has entered into a contract and there are no representations of any kind made by the design professional to any party with whom the design professional has not entered into a contract.



WSP Canada Group Limited
 Suite 111 - 93 Lombard Ave
 Winnipeg, MB R3B 3B1
 t. 204.943.3178
 f. 204.943.4948
 www.wsp.com

MANITOBA INFRASTRUCTURE
 SOUTH PERIMETER HIGHWAY DESIGN STUDY
 ULTIMATE STAGE PLANS
 ST.MARY'S ROAD (PR 200) SOUTH OF PTH 100

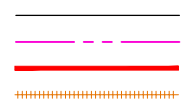
SCALE: 1:4000	DATE: 20-06-26	DWG. No. ULT-100-A	SHEET. No. 29 OF 44
------------------	-------------------	-----------------------	------------------------



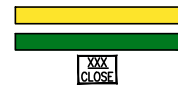
MATCH TO SHEET NO. 27

LEGEND-PLAN:

- EXISTING PROPERTY LINE
- PROPOSED PROPERTY LINE
- RETAINING WALL
- RAIL



- PROPOSED ROADWAY
- MULTI-USE TRAIL
- ROAD CLOSURE



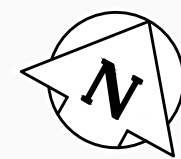
NOTE:
These design documents are prepared solely for the use by the party with whom the design professional has entered into a contract and there are no representations of any kind made by the design professional to any party with whom the design professional has not entered into a contract.

METRIC
ALL MEASUREMENTS METRES,
UNLESS STATED OTHERWISE



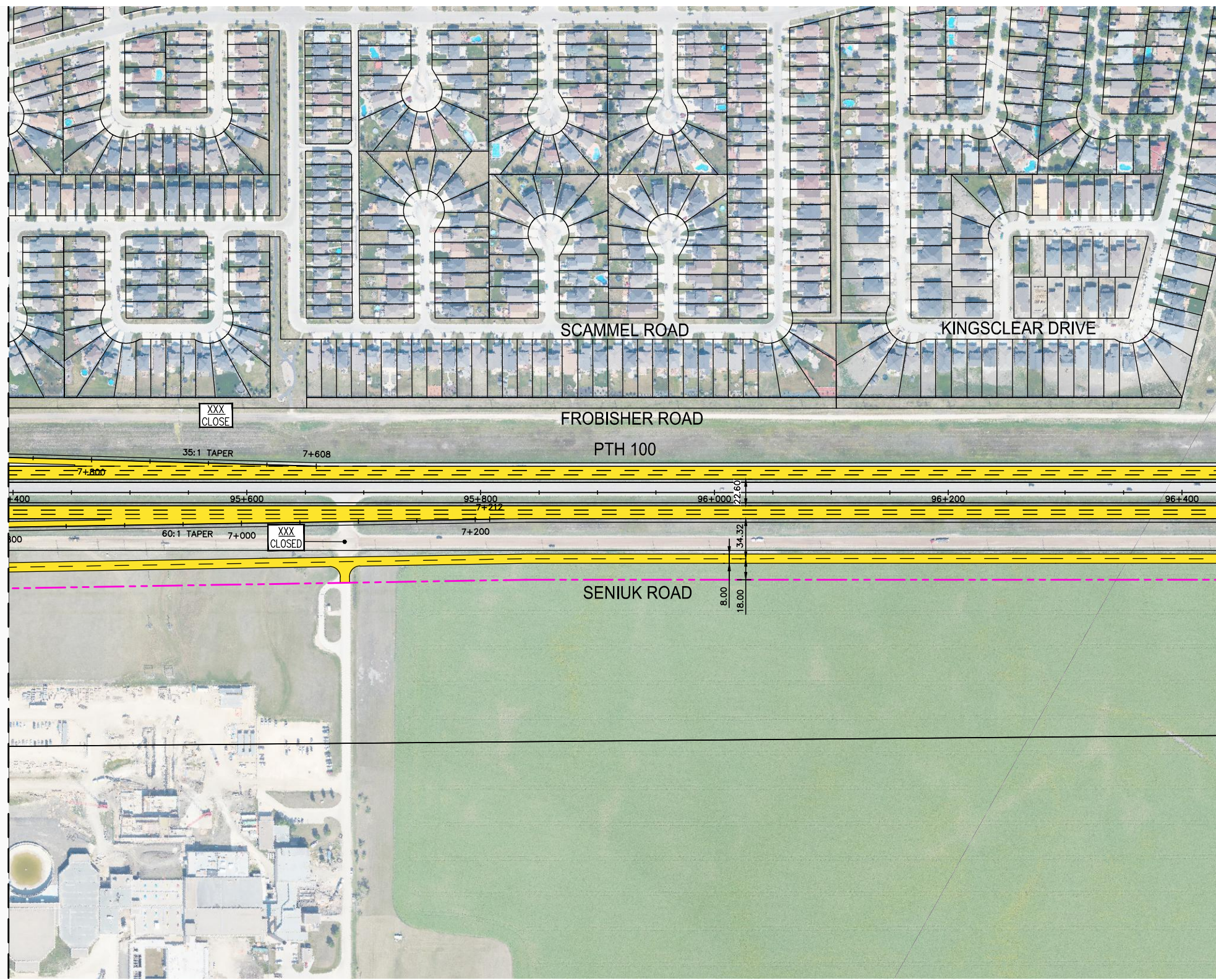
WSP Canada Group Limited
Suite 111 - 93 Lombard Ave
Winnipeg, MB R3B 3B1
t. 204.943.3178
f. 204.943.4948
www.wsp.com

MANITOBA INFRASTRUCTURE			
SOUTH PERIMETER HIGHWAY DESIGN STUDY			
ULTIMATE STAGE PLANS			
ST. MARY'S ROAD NORTH OF PTH 100			
SCALE: 1:4000	DATE: 20-06-26	DWG. No. ULT-100-A	SHEET. No. 30 OF 44



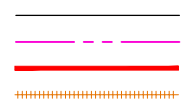
MATCH TO SHEET NO. 27

MATCH TO SHEET NO. 32

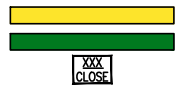


LEGEND-PLAN:

- EXISTING PROPERTY LINE
- PROPOSED PROPERTY LINE
- RETAINING WALL
- RAIL



- PROPOSED ROADWAY
- MULTI-USE TRAIL
- ROAD CLOSURE



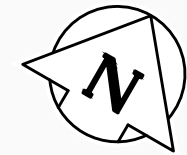
NOTE:
These design documents are prepared solely for the use by the party with whom the design professional has entered into a contract and there are no representations of any kind made by the design professional to any party with whom the design professional has not entered into a contract.

METRIC
ALL MEASUREMENTS METRES,
UNLESS STATED OTHERWISE



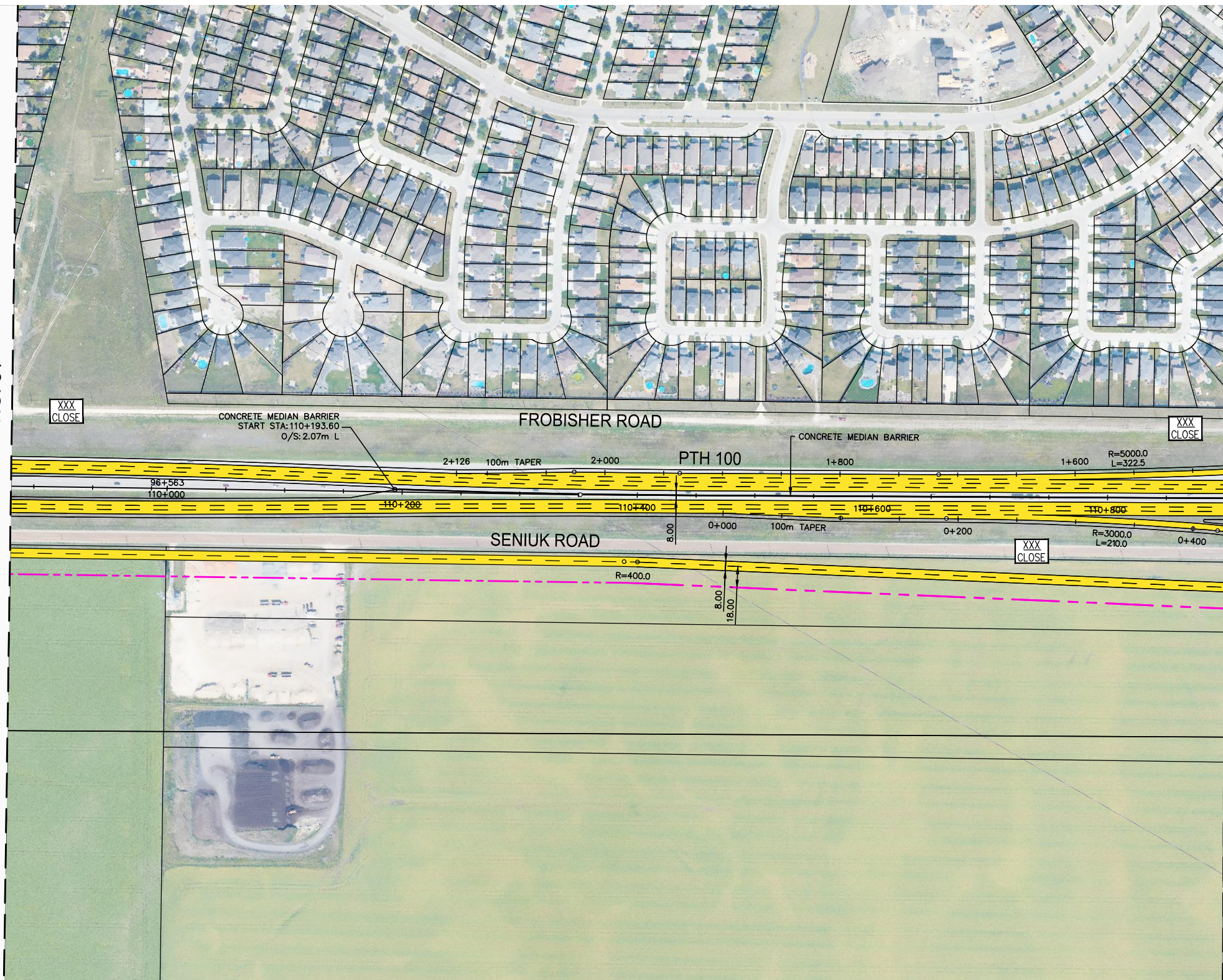
WSP Canada Group Limited
Suite 111 - 93 Lombard Ave
Winnipeg, MB R3B 3B1
t. 204.943.3178
f. 204.943.4948
www.wsp.com

MANITOBA INFRASTRUCTURE			
SOUTH PERIMETER HIGHWAY DESIGN STUDY			
ULTIMATE STAGE PLANS			
PTH 100			
SCALE: 1:4000	DATE: 20-06-26	DWG. No. ULT-100-A	SHEET. No. 31 OF 44



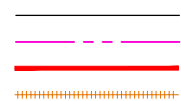
MATCH TO SHEET NO. 31

MATCH TO SHEET NO. 33

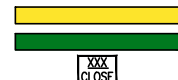


LEGEND-PLAN:

- EXISTING PROPERTY LINE
- PROPOSED PROPERTY LINE
- RETAINING WALL
- RAIL



- PROPOSED ROADWAY
- MULTI-USE TRAIL
- ROAD CLOSURE



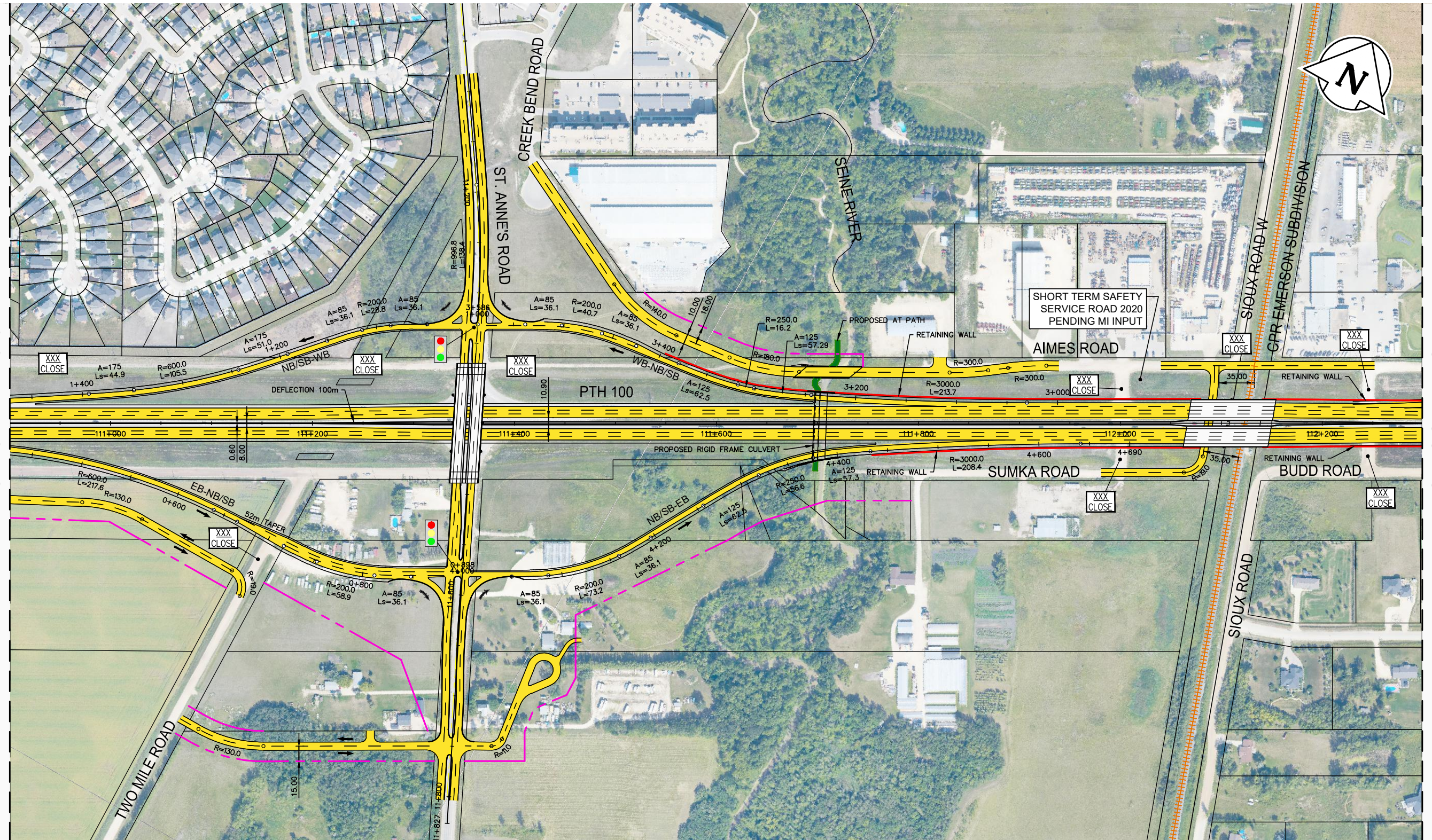
NOTE:
These design documents are prepared solely for the use by the party with whom the design professional has entered into a contract and there are no representations of any kind made by the design professional to any party with whom the design professional has not entered into a contract.

METRIC
ALL MEASUREMENTS METRES,
UNLESS STATED OTHERWISE



WSP Canada Group Limited
Suite 111 - 93 Lombard Ave
Winnipeg, MB R3B 3B1
t. 204.943.3178
f. 204.943.4948
www.wsp.com

MANITOBA INFRASTRUCTURE			
SOUTH PERIMETER HIGHWAY DESIGN STUDY			
ULTIMATE STAGE PLANS			
PTH 100			
SCALE:	DATE:	DWG. No.	SHEET. No.
1:4000	20-06-26	ULT-100-A	32 OF 44



MATCH TO SHEET NO. 32

MATCH TO SHEET NO. 34



LEGEND-PLAN:

- EXISTING PROPERTY LINE
- PROPOSED PROPERTY LINE
- RETAINING WALL
- RAIL
- PROPOSED ROADWAY
- MULTI-USE TRAIL
- ROAD CLOSURE XXX
CLOSE

NOTE:
These design documents are prepared solely for the use by the party with whom the design professional has entered into a contract and there are no representations of any kind made by the design professional to any party with whom the design professional has not entered into a contract.

METRIC
ALL MEASUREMENTS METRES,
UNLESS STATED OTHERWISE

WSP Canada Group Limited
Suite 111 - 93 Lombard Ave
Winnipeg, MB R3B 3B1
t. 204.943.3178
f. 204.943.4948
www.wsp.com

MANITOBA INFRASTRUCTURE			
SOUTH PERIMETER HIGHWAY DESIGN STUDY			
ULTIMATE STAGE PLANS			
PTH 100 AT ST. ANNE'S ROAD			
SCALE:	DATE:	DWG. No.	SHEET. No.
1:4000	20-06-26	ULT-100-A	33 OF 44