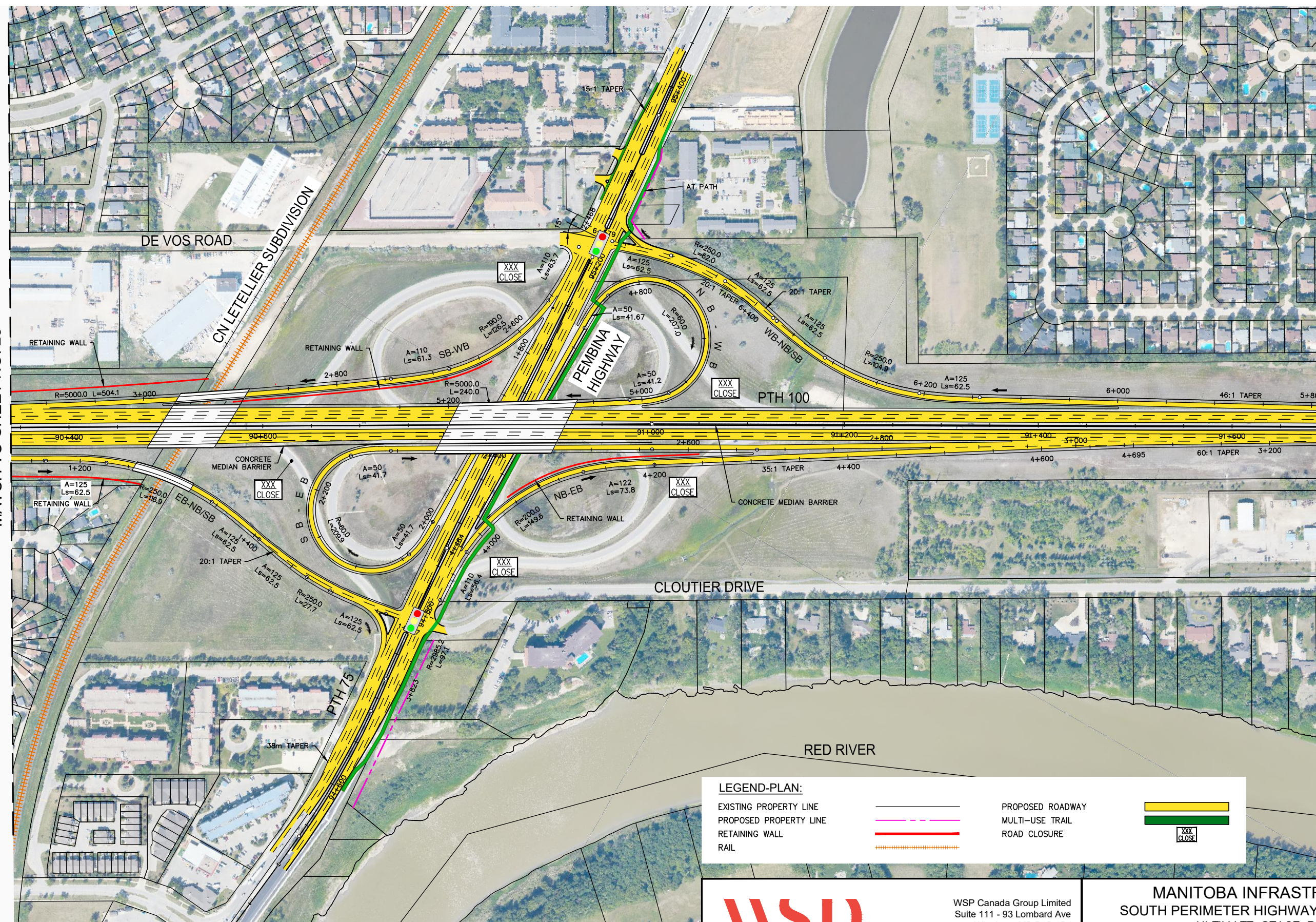


MATCH TO SHEET NO. 23

MATCH TO SHEET NO. 25



LEGEND-PLAN:

EXISTING PROPERTY LINE		PROPOSED ROADWAY	
PROPOSED PROPERTY LINE		MULTI-USE TRAIL	
RETAINING WALL		ROAD CLOSURE	
RAIL			

METRIC
ALL MEASUREMENTS METRES,
UNLESS STATED OTHERWISE



WSP Canada Group Limited
Suite 111 - 93 Lombard Ave
Winnipeg, MB R3B 3B1
t. 204.943.3178
f. 204.943.4948
www.wsp.com

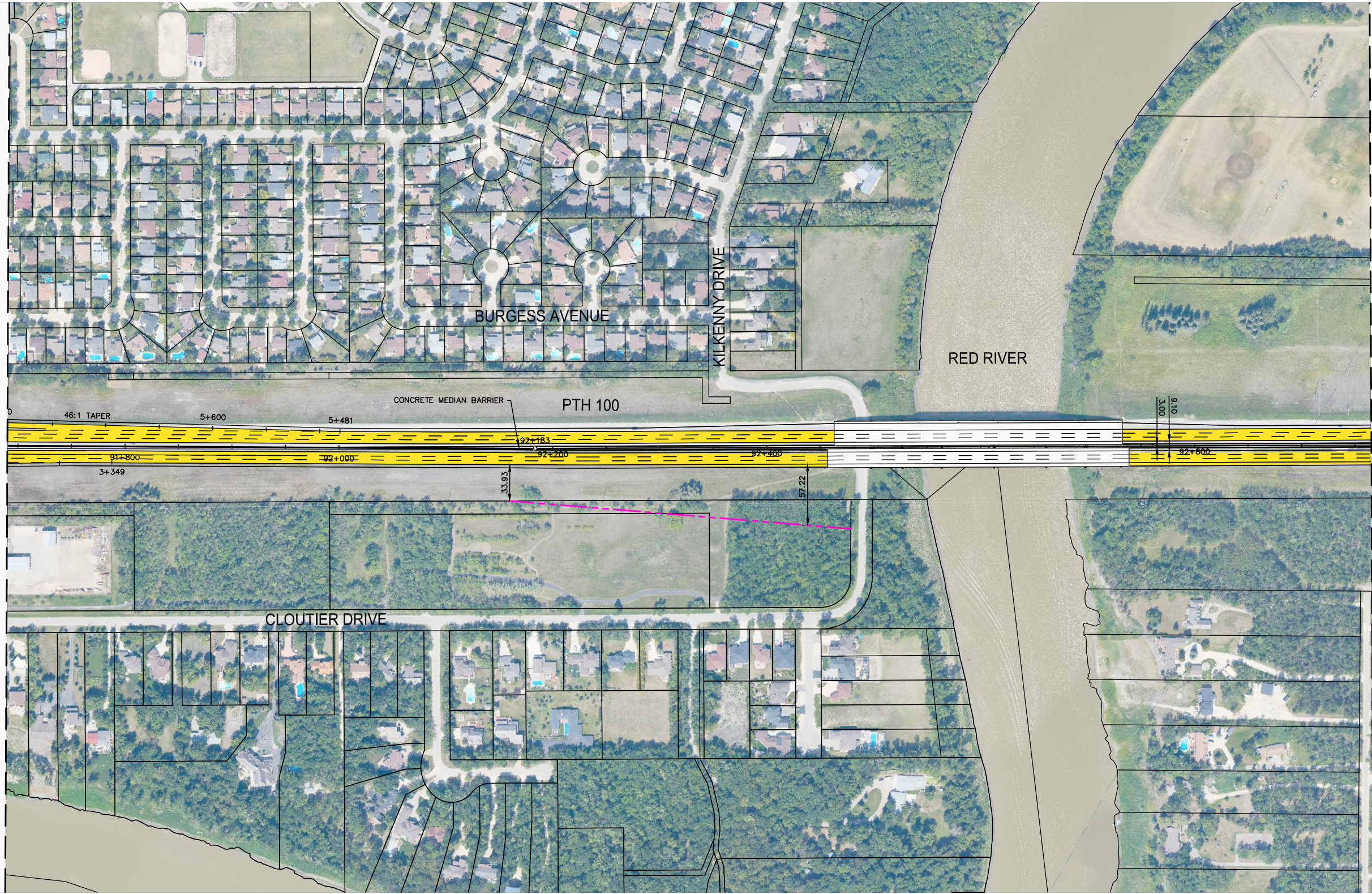
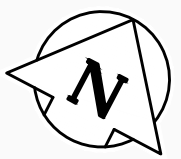
MANITOBA INFRASTRUCTURE
SOUTH PERIMETER HIGHWAY DESIGN STUDY
ULTIMATE STAGE PLANS
PTH 100 AT PEMBINA HIGHWAY

SCALE: 1:4000	DATE: 20-06-26	DWG. No. ULT-100-A	SHEET. No. 24 OF 44
------------------	-------------------	-----------------------	------------------------

NOTE:
These design documents are prepared solely for the use by the party with whom the design professional has entered into a contract and there are no representations of any kind made by the design professional to any party with whom the design professional has not entered into a contract.

MATCH TO SHEET NO. 24

MATCH TO SHEET NO. 26



LEGEND-PLAN:

- EXISTING PROPERTY LINE
- PROPOSED PROPERTY LINE
- RETAINING WALL
- RAIL



- PROPOSED ROADWAY
- MULTI-USE TRAIL
- ROAD CLOSURE



METRIC
ALL MEASUREMENTS METRES,
UNLESS STATED OTHERWISE

NOTE:
These design documents are prepared solely for the use by the party with whom the design professional has entered into a contract and there are no representations of any kind made by the design professional to any party with whom the design professional has not entered into a contract.



WSP Canada Group Limited
Suite 111 - 93 Lombard Ave
Winnipeg, MB R3B 3B1
t. 204.943.3178
f. 204.943.4948
www.wsp.com

MANITOBA INFRASTRUCTURE			
SOUTH PERIMETER HIGHWAY DESIGN STUDY			
ULTIMATE STAGE PLANS			
PTH 100			
SCALE:	DATE:	DWG. No.	SHEET. No.
1:4000	20-06-26	ULT-100-A	25 OF 44