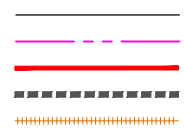
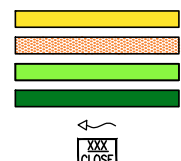


**LEGEND-PLAN:**

- EXISTING PROPERTY LINE
- PROPOSED PROPERTY LINE
- RETAINING WALL
- PROPOSED CULVERT
- RAIL



- CONCRETE
- GRAVEL
- ASPHALT
- MULTI-USE TRAIL
- DIRECTION OF DRAINAGE
- ROAD CLOSURE



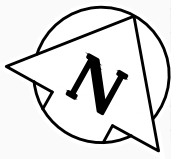
NOTE:  
These design documents are prepared solely for the use by the party with whom the design professional has entered into a contract and there are no representations of any kind made by the design professional to any party with whom the design professional has not entered into a contract.

METRIC  
ALL MEASUREMENTS METRES,  
UNLESS STATED OTHERWISE

WSP Canada Group Limited  
Suite 111 - 93 Lombard Ave  
Winnipeg, MB R3B 3B1  
t. 204.943.3178  
f. 204.943.4948  
www.wsp.com

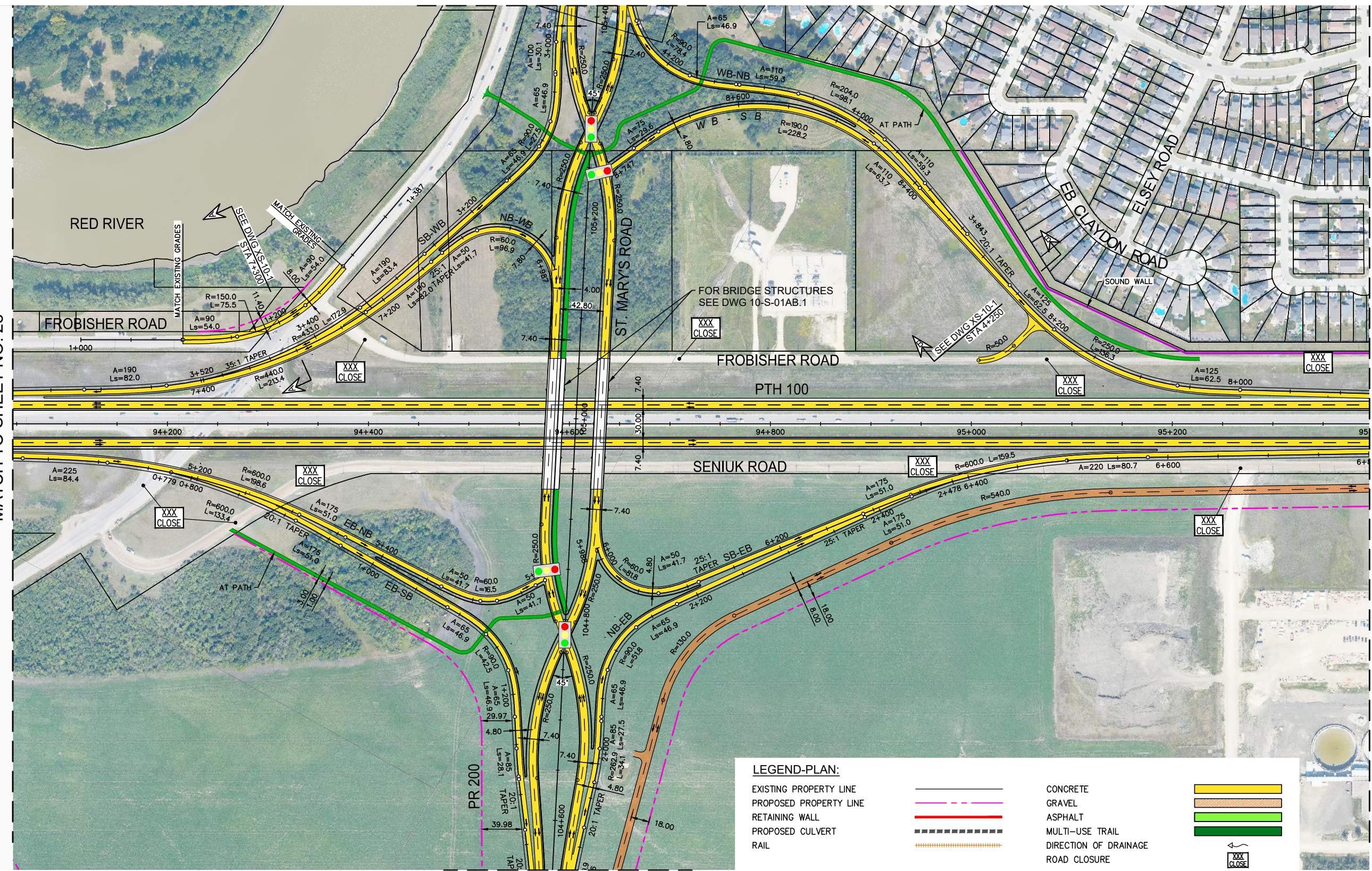
<b>MANITOBA INFRASTRUCTURE</b>			
<b>SOUTH PERIMETER HIGHWAY DESIGN STUDY</b>			
<b>INITIAL STAGE PLANS</b>			
<b>PTH 100</b>			
SCALE:	DATE:	DWG. No.	SHEET. No.
1:4000	20-06-26	INT-100-A	28 OF 42

MATCH TO SHEET NO. 32



MATCH TO SHEET NO. 28

MATCH TO SHEET NO. 33



MATCH TO SHEET NO. 30

**LEGEND-PLAN:**

- EXISTING PROPERTY LINE
- PROPOSED PROPERTY LINE
- RETAINING WALL
- PROPOSED CULVERT
- RAIL
- CONCRETE
- GRAVEL
- ASPHALT
- MULTI-USE TRAIL
- DIRECTION OF DRAINAGE
- ROAD CLOSURE

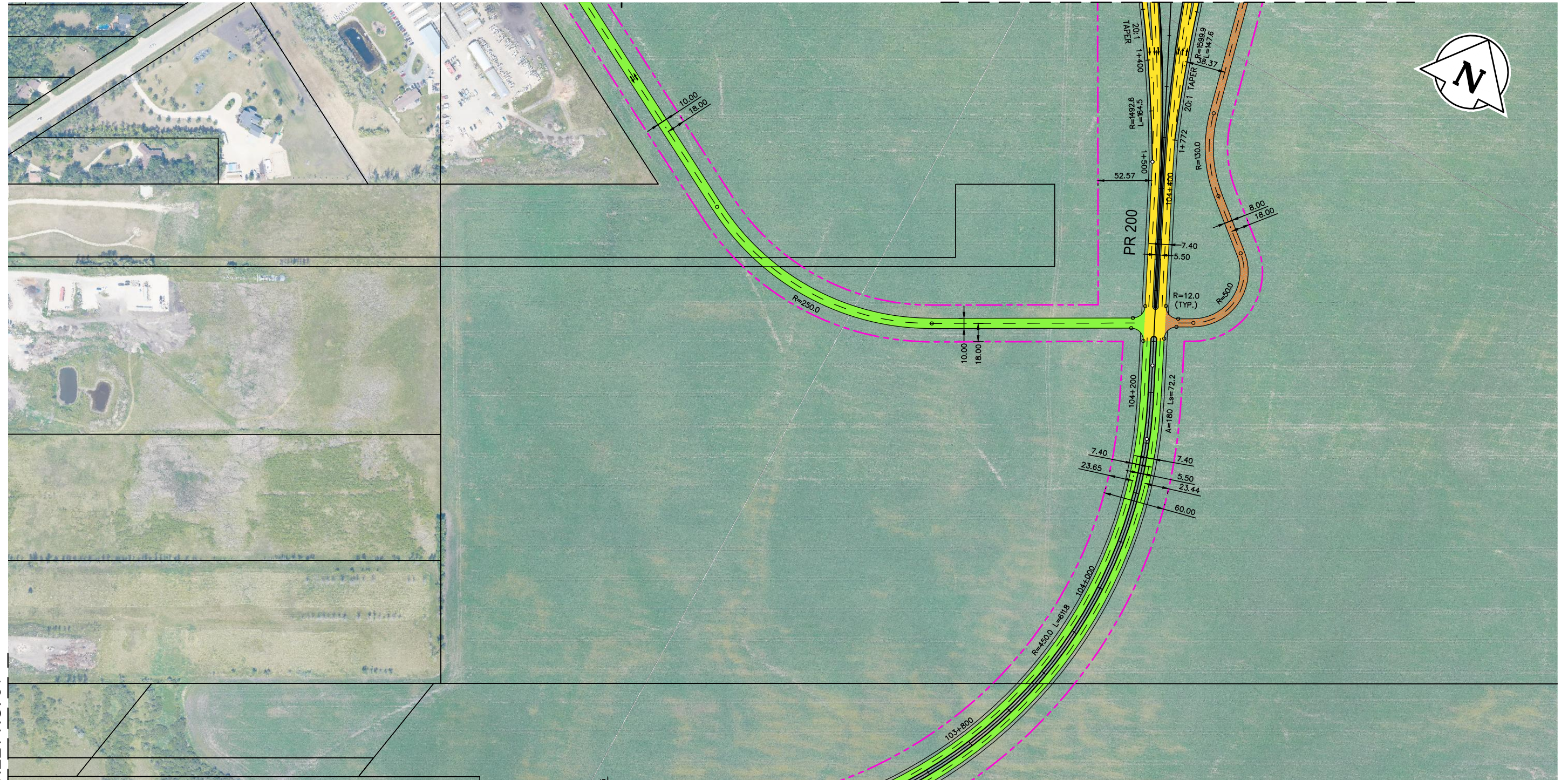
METRIC  
ALL MEASUREMENTS METRES,  
UNLESS STATED OTHERWISE

NOTE:  
These design documents are prepared solely for the use by the party with whom the design professional has entered into a contract and there are no representations of any kind made by the design professional to any party with whom the design professional has not entered into a contract.

WSP Canada Group Limited  
Suite 111 - 93 Lombard Ave  
Winnipeg, MB R3B 3B1  
t. 204.943.3178  
f. 204.943.4948  
www.wsp.com

**MANITOBA INFRASTRUCTURE**  
SOUTH PERIMETER HIGHWAY DESIGN STUDY  
INITIAL STAGE PLANS  
PTH 100 AT ST.MARY'S ROAD (PR 200)

SCALE: 1:4000	DATE: 20-06-26	DWG. No. INT-100-A	SHEET. No. 29 OF 42
------------------	-------------------	-----------------------	------------------------



MATCH TO SHEET NO. 31

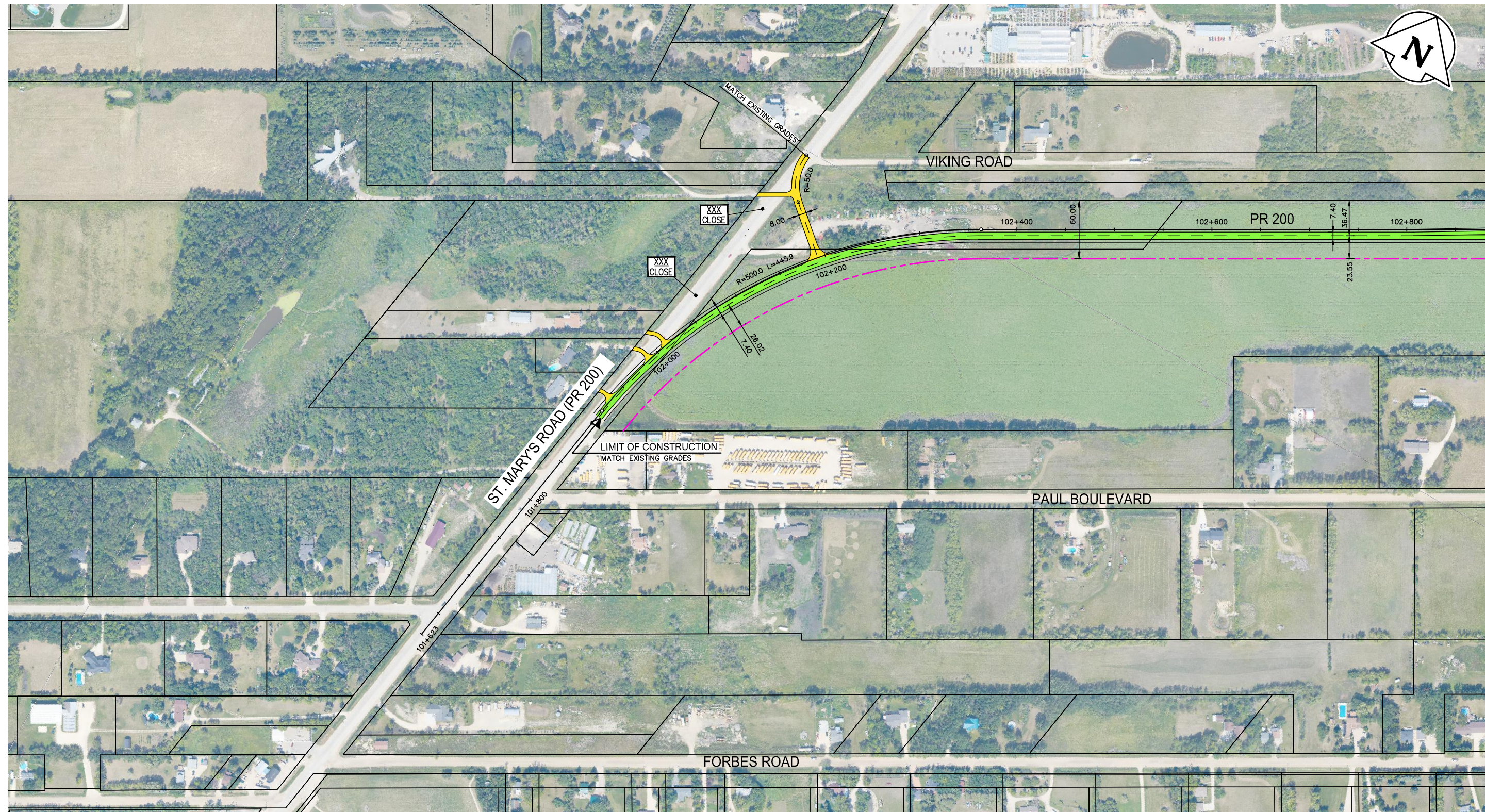
**LEGEND-PLAN:**

—	EXISTING PROPERTY LINE	—	CONCRETE	
- - -	PROPOSED PROPERTY LINE	—	GRAVEL	
—	RETAINING WALL	—	ASPHALT	
—	PROPOSED CULVERT	—	MULTI-USE TRAIL	
—	RAIL	—	DIRECTION OF DRAINAGE	
		—	ROAD CLOSURE	

NOTE: These design documents are prepared solely for the use by the party with whom the design professional has entered into a contract and there are no representations of any kind made by the design professional to any party with whom the design professional has not entered into a contract.

METRIC  
ALL MEASUREMENTS METRES,  
UNLESS STATED OTHERWISE

	WSP Canada Group Limited Suite 111 - 93 Lombard Ave Winnipeg, MB R3B 3B1 t. 204.943.3178 f. 204.943.4948 www.wsp.com		<b>MANITOBA INFRASTRUCTURE</b> <b>SOUTH PERIMETER HIGHWAY DESIGN STUDY</b> <b>INITIAL STAGE PLANS</b> <b>ST.MARY'S ROAD (PR 200) SOUTH OF PTH 100</b>	
	SCALE: 1:4000	DATE: 20-06-26	DWG. No. INT-100-A	SHEET. No. 30 OF 42



MATCH TO SHEET NO. 30

**LEGEND-PLAN:**

- |                        |  |                       |  |
|------------------------|--|-----------------------|--|
| EXISTING PROPERTY LINE |  | CONCRETE              |  |
| PROPOSED PROPERTY LINE |  | GRAVEL                |  |
| RETAINING WALL         |  | ASPHALT               |  |
| PROPOSED CULVERT       |  | MULTI-USE TRAIL       |  |
| RAIL                   |  | DIRECTION OF DRAINAGE |  |
|                        |  | ROAD CLOSURE          |  |

NOTE:  
These design documents are prepared solely for the use by the party with whom the design professional has entered into a contract and there are no representations of any kind made by the design professional to any party with whom the design professional has not entered into a contract.

METRIC  
ALL MEASUREMENTS METRES,  
UNLESS STATED OTHERWISE



WSP Canada Group Limited  
Suite 111 - 93 Lombard Ave  
Winnipeg, MB R3B 3B1  
t. 204.943.3178  
f. 204.943.4948  
www.wsp.com

**MANITOBA INFRASTRUCTURE**  
**SOUTH PERIMETER HIGHWAY DESIGN STUDY**  
**INITIAL STAGE PLANS**  
**ST.MARY'S ROAD (PR 200) SOUTH OF PTH 100**

SCALE: 1:4000	DATE: 20-06-26	DWG. No. INT-100-A	SHEET. No. 31 OF 42
------------------	-------------------	-----------------------	------------------------



MATCH TO SHEET NO. 29

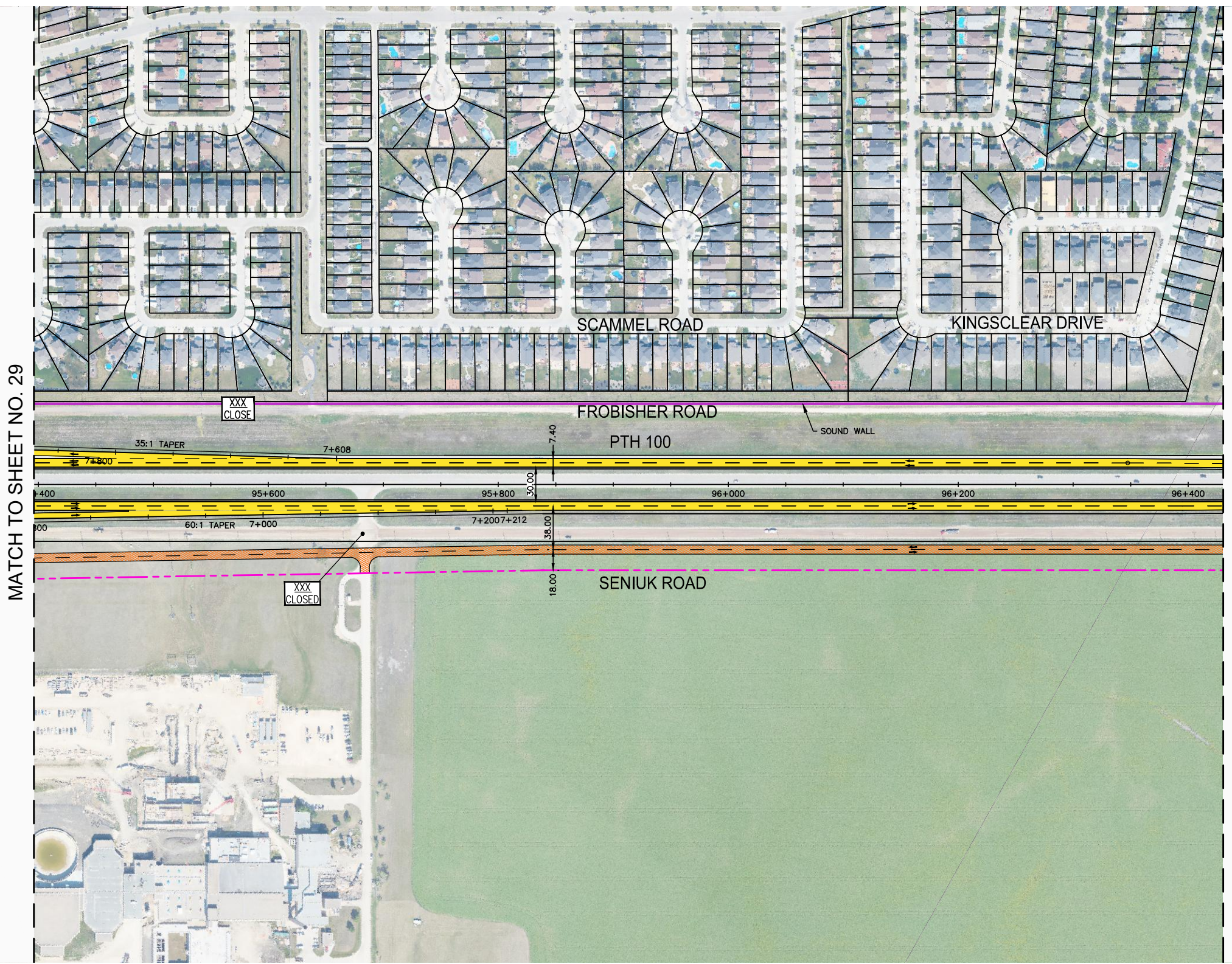
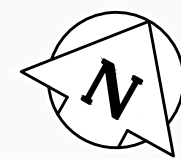
**LEGEND-PLAN:**

- |                        |  |                       |  |
|------------------------|--|-----------------------|--|
| EXISTING PROPERTY LINE |  | CONCRETE              |  |
| PROPOSED PROPERTY LINE |  | GRAVEL                |  |
| RETAINING WALL         |  | ASPHALT               |  |
| PROPOSED CULVERT       |  | MULTI-USE TRAIL       |  |
| RAIL                   |  | DIRECTION OF DRAINAGE |  |
|                        |  | ROAD CLOSURE          |  |

NOTE:  
These design documents are prepared solely for the use by the party with whom the design professional has entered into a contract and there are no representations of any kind made by the design professional to any party with whom the design professional has not entered into a contract.

METRIC  
ALL MEASUREMENTS METRES,  
UNLESS STATED OTHERWISE

	WSP Canada Group Limited Suite 111 - 93 Lombard Ave Winnipeg, MB R3B 3B1 t. 204.943.3178 f. 204.943.4948 www.wsp.com			<b>MANITOBA INFRASTRUCTURE</b> SOUTH PERIMETER HIGHWAY DESIGN STUDY INITIAL STAGE PLANS ST. MARY'S ROAD NORTH OF PTH 100	
	SCALE: 1:4000	DATE: 20-06-26	DWG. No. INT-100-A	SHEET. No. 32 OF 42	



MATCH TO SHEET NO. 29

MATCH TO SHEET NO. 34

**LEGEND-PLAN:**

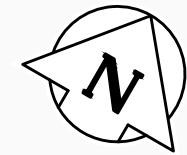
- |                        |  |                       |  |
|------------------------|--|-----------------------|--|
| EXISTING PROPERTY LINE |  | CONCRETE              |  |
| PROPOSED PROPERTY LINE |  | GRAVEL                |  |
| RETAINING WALL         |  | ASPHALT               |  |
| PROPOSED CULVERT       |  | MULTI-USE TRAIL       |  |
| RAIL                   |  | DIRECTION OF DRAINAGE |  |
|                        |  | ROAD CLOSURE          |  |

NOTE:  
These design documents are prepared solely for the use by the party with whom the design professional has entered into a contract and there are no representations of any kind made by the design professional to any party with whom the design professional has not entered into a contract.

METRIC  
ALL MEASUREMENTS METRES,  
UNLESS STATED OTHERWISE

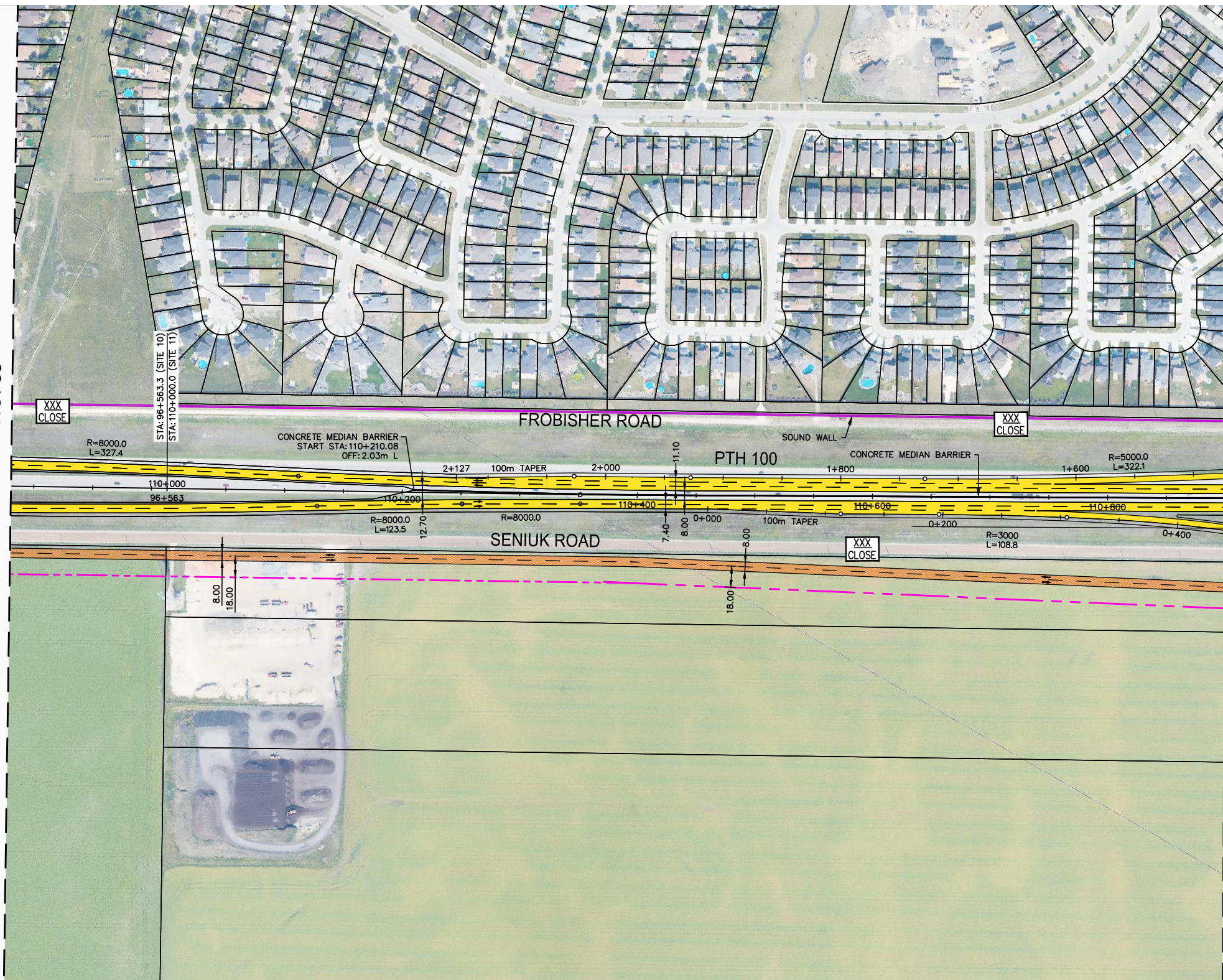
WSP Canada Group Limited  
Suite 111 - 93 Lombard Ave  
Winnipeg, MB R3B 3B1  
t. 204.943.3178  
f. 204.943.4948  
www.wsp.com

<b>MANITOBA INFRASTRUCTURE</b>			
<b>SOUTH PERIMETER HIGHWAY DESIGN STUDY</b>			
<b>INITIAL STAGE PLANS</b>			
<b>PTH 100</b>			
SCALE:	DATE:	DWG. No.	SHEET. No.
1:4000	20-06-26	INT-100-A	33 OF 42



MATCH TO SHEET NO. 33

MATCH TO SHEET NO. 35



**LEGEND-PLAN:**

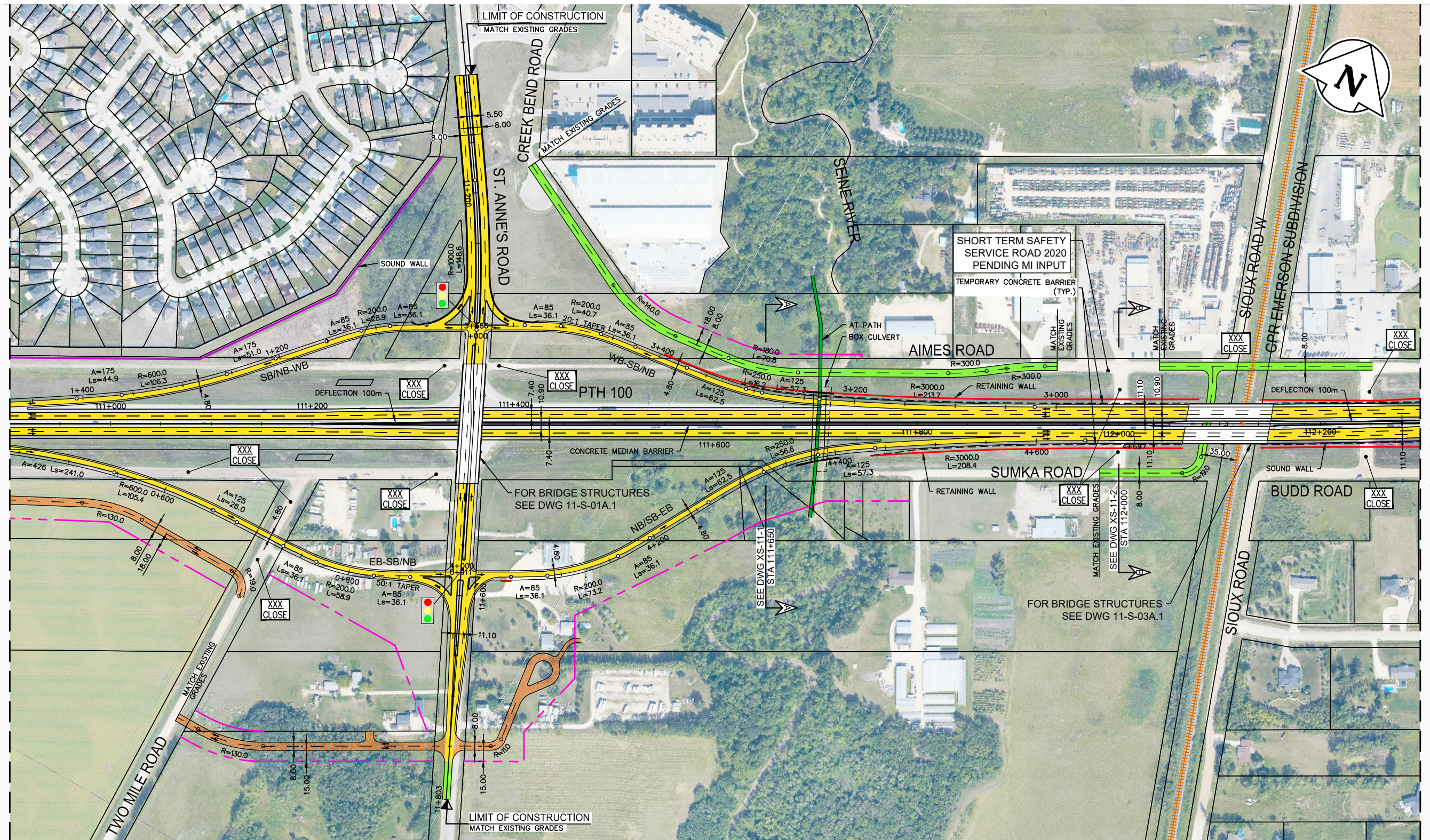
EXISTING PROPERTY LINE		CONCRETE	
PROPOSED PROPERTY LINE		GRAVEL	
RETAINING WALL		ASPHALT	
PROPOSED CULVERT		MULTI-USE TRAIL	
RAIL		DIRECTION OF DRAINAGE	
		ROAD CLOSURE	

NOTE:  
These design documents are prepared solely for the use by the party with whom the design professional has entered into a contract and there are no representations of any kind made by the design professional to any party with whom the design professional has not entered into a contract.

METRIC  
ALL MEASUREMENTS METRES,  
UNLESS STATED OTHERWISE

WSP Canada Group Limited  
Suite 111 - 93 Lombard Ave  
Winnipeg, MB R3B 3B1  
t. 204.943.3178  
f. 204.943.4948  
www.wsp.com

<b>MANITOBA INFRASTRUCTURE</b>			
<b>SOUTH PERIMETER HIGHWAY DESIGN STUDY</b>			
<b>INITIAL STAGE PLANS</b>			
<b>PTH 100</b>			
SCALE:	DATE:	DWG. No.	SHEET. No.
1:4000	20-06-26	INT-100-A	34 OF 42



MATCH TO SHEET NO. 34

MATCH TO SHEET NO. 36

**LEGEND-PLAN:**

- |                        |  |                       |  |
|------------------------|--|-----------------------|--|
| EXISTING PROPERTY LINE |  | CONCRETE              |  |
| PROPOSED PROPERTY LINE |  | GRAVEL                |  |
| RETAINING WALL         |  | ASPHALT               |  |
| PROPOSED CULVERT       |  | MULTI-USE TRAIL       |  |
| RAIL                   |  | DIRECTION OF DRAINAGE |  |
|                        |  | ROAD CLOSURE          |  |

NOTE:  
These design documents are prepared solely for the use by the party with whom the design professional has entered into a contract and there are no representations of any kind made by the design professional to any party with whom the design professional has not entered into a contract.

METRIC  
ALL MEASUREMENTS METRES,  
UNLESS STATED OTHERWISE

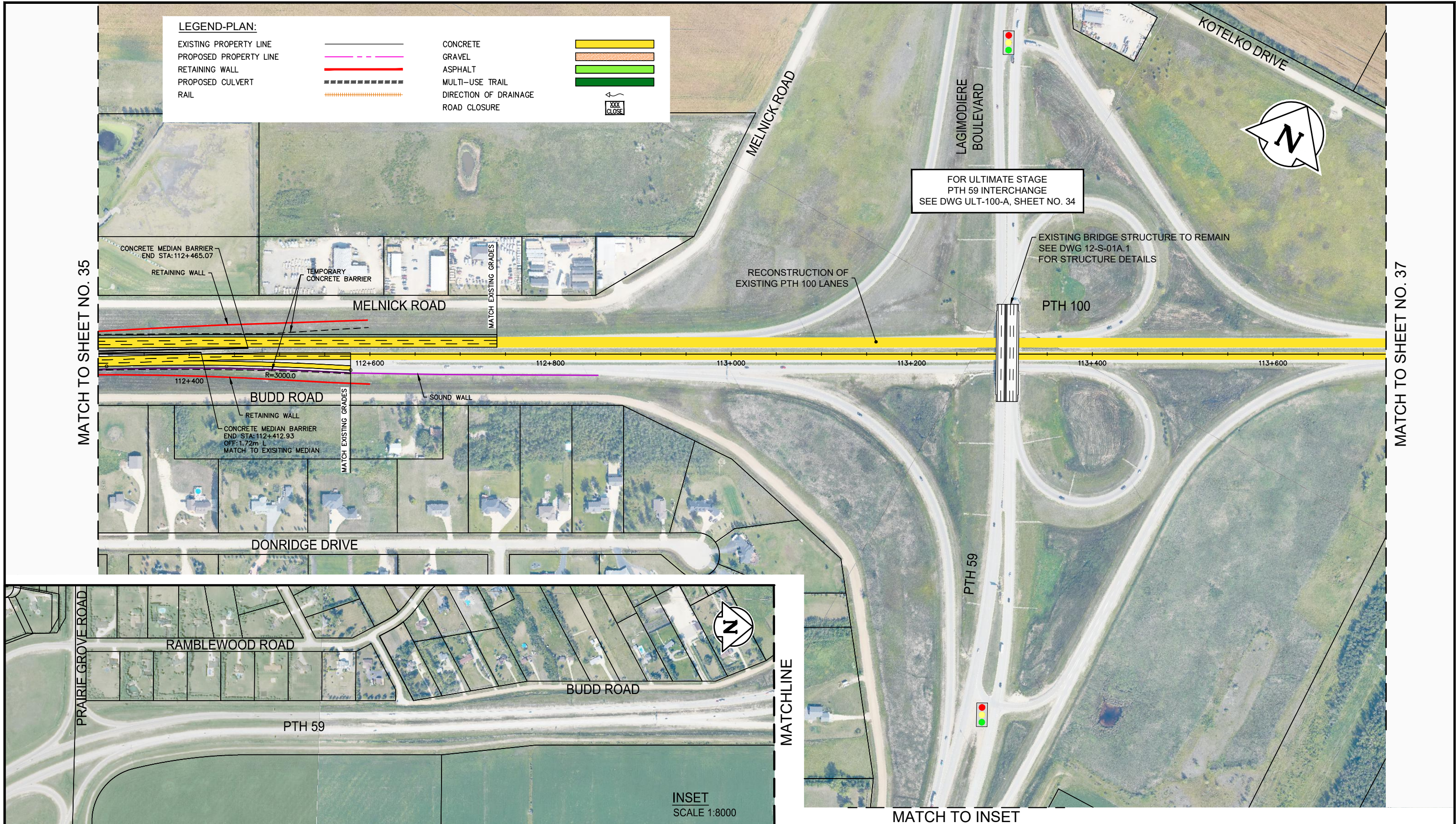


WSP Canada Group Limited  
Suite 111 - 93 Lombard Ave  
Winnipeg, MB R3B 3B1  
t. 204.943.3178  
f. 204.943.4948  
www.wsp.com

**MANITOBA INFRASTRUCTURE**  
SOUTH PERIMETER HIGHWAY DESIGN STUDY  
INITIAL STAGE PLANS  
PTH 100 AT ST. ANNE'S ROAD

SCALE: 1:4000	DATE: 20-06-26	DWG. No. INT-100-A	SHEET. No. 35 OF 42
------------------	-------------------	-----------------------	------------------------





**LEGEND-PLAN:**

EXISTING PROPERTY LINE		CONCRETE	
PROPOSED PROPERTY LINE		GRAVEL	
RETAINING WALL		ASPHALT	
PROPOSED CULVERT		MULTI-USE TRAIL	
RAIL		DIRECTION OF DRAINAGE	
		ROAD CLOSURE	

FOR ULTIMATE STAGE  
PTH 59 INTERCHANGE  
SEE DWG ULT-100-A, SHEET NO. 34

EXISTING BRIDGE STRUCTURE TO REMAIN  
SEE DWG 12-S-01A.1  
FOR STRUCTURE DETAILS

RECONSTRUCTION OF  
EXISTING PTH 100 LANES

MATCH TO SHEET NO. 35

MATCH TO SHEET NO. 37



INSET  
SCALE 1:8000

METRIC  
ALL MEASUREMENTS METRES,  
UNLESS STATED OTHERWISE



WSP Canada Group Limited  
Suite 111 - 93 Lombard Ave  
Winnipeg, MB R3B 3B1  
t. 204.943.3178  
f. 204.943.4948  
www.wsp.com

MANITOBA INFRASTRUCTURE  
SOUTH PERIMETER HIGHWAY DESIGN STUDY  
INITIAL STAGE PLANS  
PTH 100 AT LAGIMONIERE BOULEVARD (PTH 59)

SCALE: 1:4000	DATE: 20-06-26	DWG. No. INT-100-A	SHEET. No. 36 OF 42
------------------	-------------------	-----------------------	------------------------

NOTE:  
These design documents are prepared solely for the use by the party with whom the design professional has entered into a contract and there are no representations of any kind made by the design professional to any party with whom the design professional has not entered into a contract.