

MATCH TO SHEET NO. 8

MATCH TO SHEET NO. 10

**LEGEND-PLAN:**

- |                        |  |                       |  |
|------------------------|--|-----------------------|--|
| EXISTING PROPERTY LINE |  | CONCRETE              |  |
| PROPOSED PROPERTY LINE |  | GRAVEL                |  |
| RETAINING WALL         |  | ASPHALT               |  |
| PROPOSED CULVERT       |  | MULTI-USE TRAIL       |  |
| RAIL                   |  | DIRECTION OF DRAINAGE |  |
|                        |  | ROAD CLOSURE          |  |

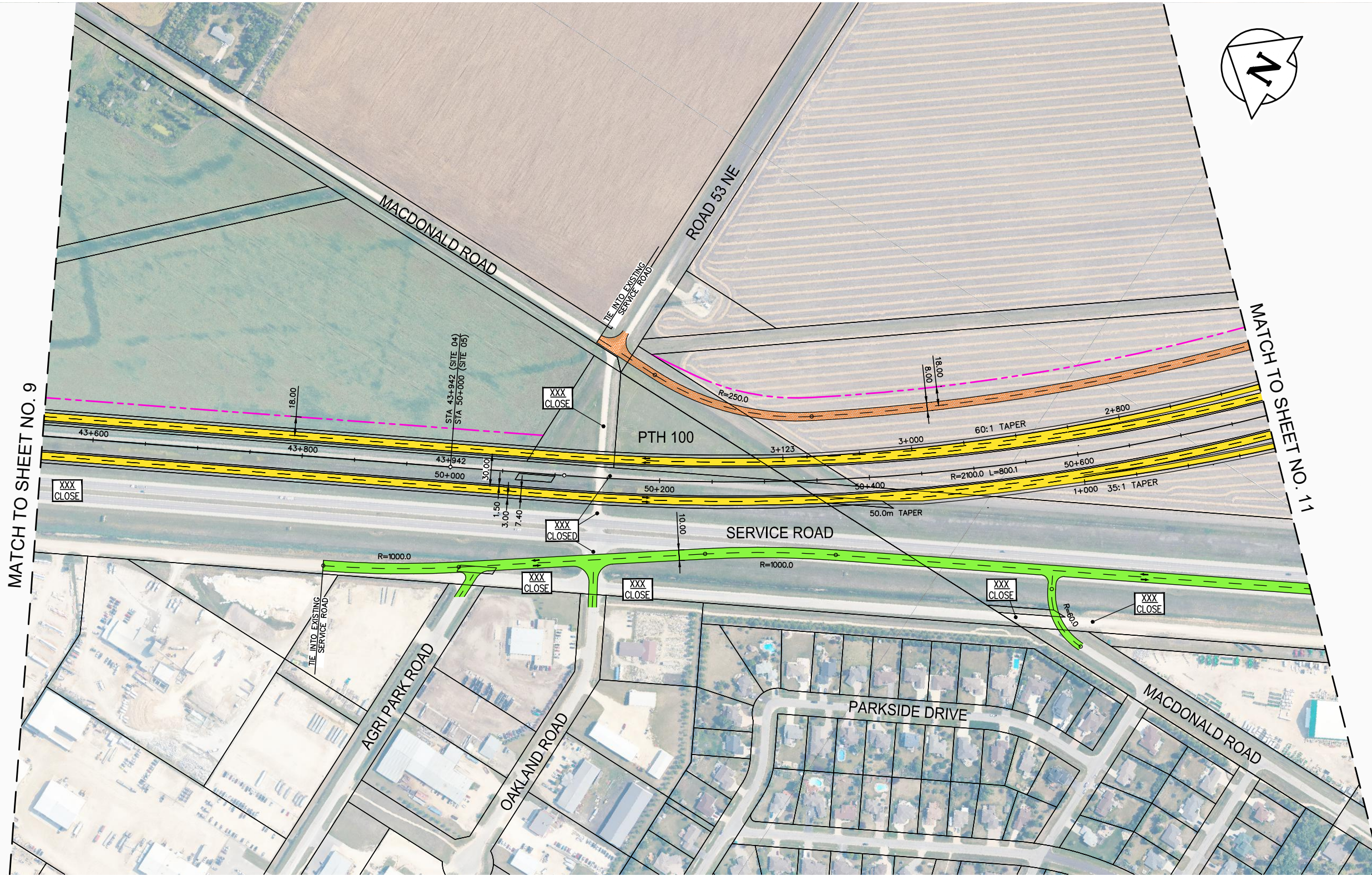
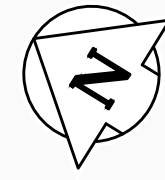
NOTE:  
These design documents are prepared solely for the use by the party with whom the design professional has entered into a contract and there are no representations of any kind made by the design professional to any party with whom the design professional has not entered into a contract.

METRIC  
ALL MEASUREMENTS METRES,  
UNLESS STATED OTHERWISE

WSP Canada Group Limited  
Suite 111 - 93 Lombard Ave  
Winnipeg, MB R3B 3B1  
t. 204.943.3178  
f. 204.943.4948  
www.wsp.com

<b>MANITOBA INFRASTRUCTURE</b>			
<b>SOUTH PERIMETER HIGHWAY DESIGN STUDY</b>			
<b>INITIAL STAGE PLANS</b>			
<b>PTH 100 AT CEMR CARMAN SUBDIVISION</b>			
SCALE:	DATE:	DWG. No.	SHEET. No.
1:4000	20-06-26	INT-100-A	9 OF 42





MATCH TO SHEET NO. 9

MATCH TO SHEET NO. 11

**LEGEND-PLAN:**

- |                        |  |                       |  |
|------------------------|--|-----------------------|--|
| EXISTING PROPERTY LINE |  | CONCRETE              |  |
| PROPOSED PROPERTY LINE |  | GRAVEL                |  |
| RETAINING WALL         |  | ASPHALT               |  |
| PROPOSED CULVERT       |  | MULTI-USE TRAIL       |  |
| RAIL                   |  | DIRECTION OF DRAINAGE |  |
|                        |  | ROAD CLOSURE          |  |

NOTE:  
These design documents are prepared solely for the use by the party with whom the design professional has entered into a contract and there are no representations of any kind made by the design professional to any party with whom the design professional has not entered into a contract.

METRIC  
ALL MEASUREMENTS METRES,  
UNLESS STATED OTHERWISE

WSP Canada Group Limited  
Suite 111 - 93 Lombard Ave  
Winnipeg, MB R3B 3B1  
t. 204.943.3178  
f. 204.943.4948  
www.wsp.com

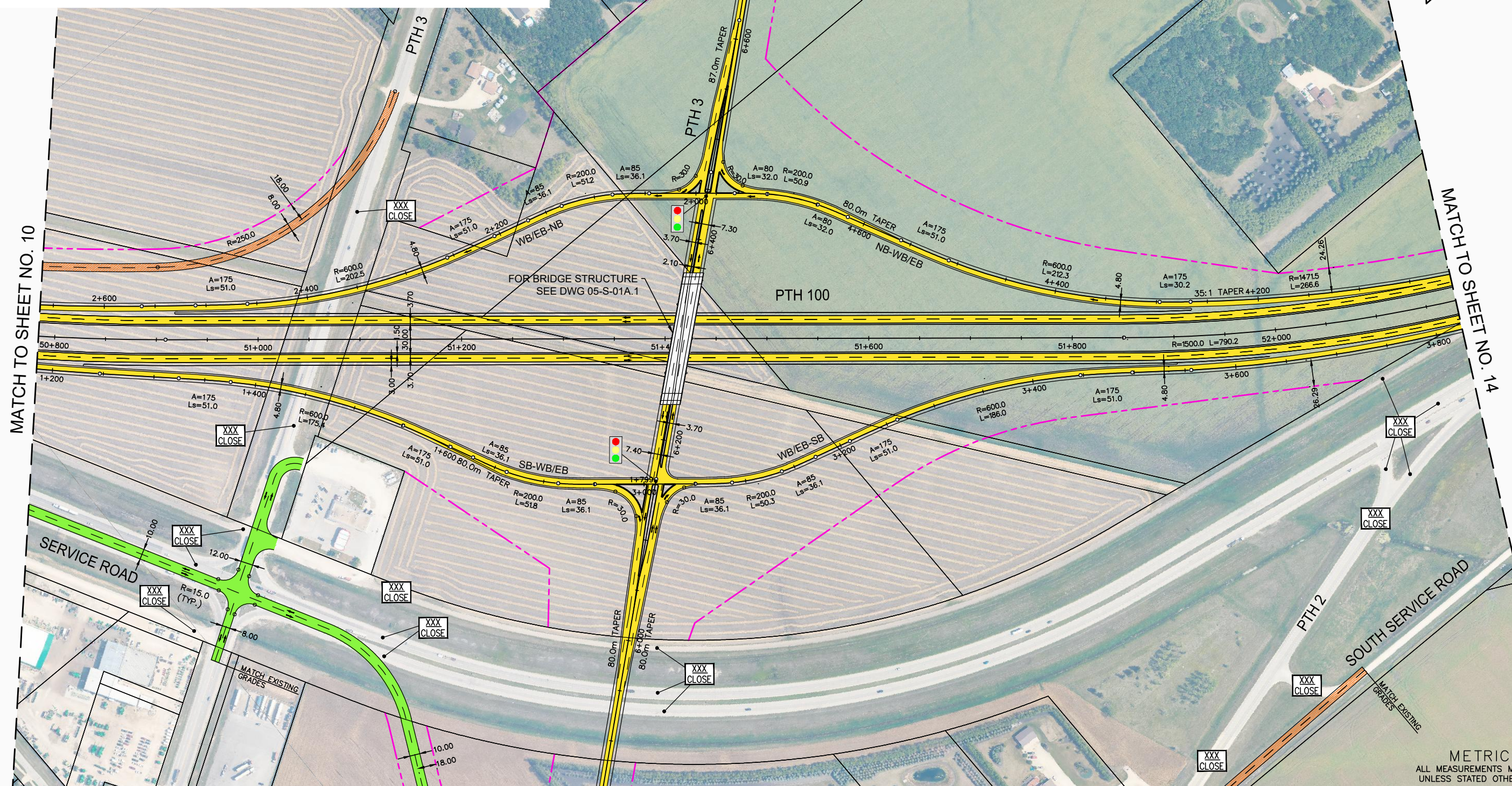
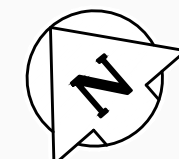
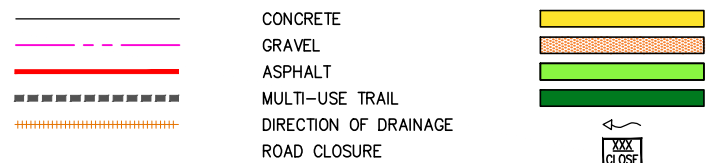
<b>MANITOBA INFRASTRUCTURE</b>			
<b>SOUTH PERIMETER HIGHWAY DESIGN STUDY</b>			
<b>INITIAL STAGE PLANS</b>			
<b>PTH 100</b>			
SCALE:	DATE:	DWG. No.	SHEET. No.
1:4000	20-06-26	INT-100-A	10 OF 42



MATCH TO SHEET NO. 13

LEGEND-PLAN:

- EXISTING PROPERTY LINE
- PROPOSED PROPERTY LINE
- RETAINING WALL
- PROPOSED CULVERT
- RAIL
- CONCRETE
- GRAVEL
- ASPHALT
- MULTI-USE TRAIL
- DIRECTION OF DRAINAGE
- ROAD CLOSURE



MATCH TO SHEET NO. 10

MATCH TO SHEET NO. 14

MATCH TO SHEET NO. 12

METRIC  
ALL MEASUREMENTS METRES,  
UNLESS STATED OTHERWISE



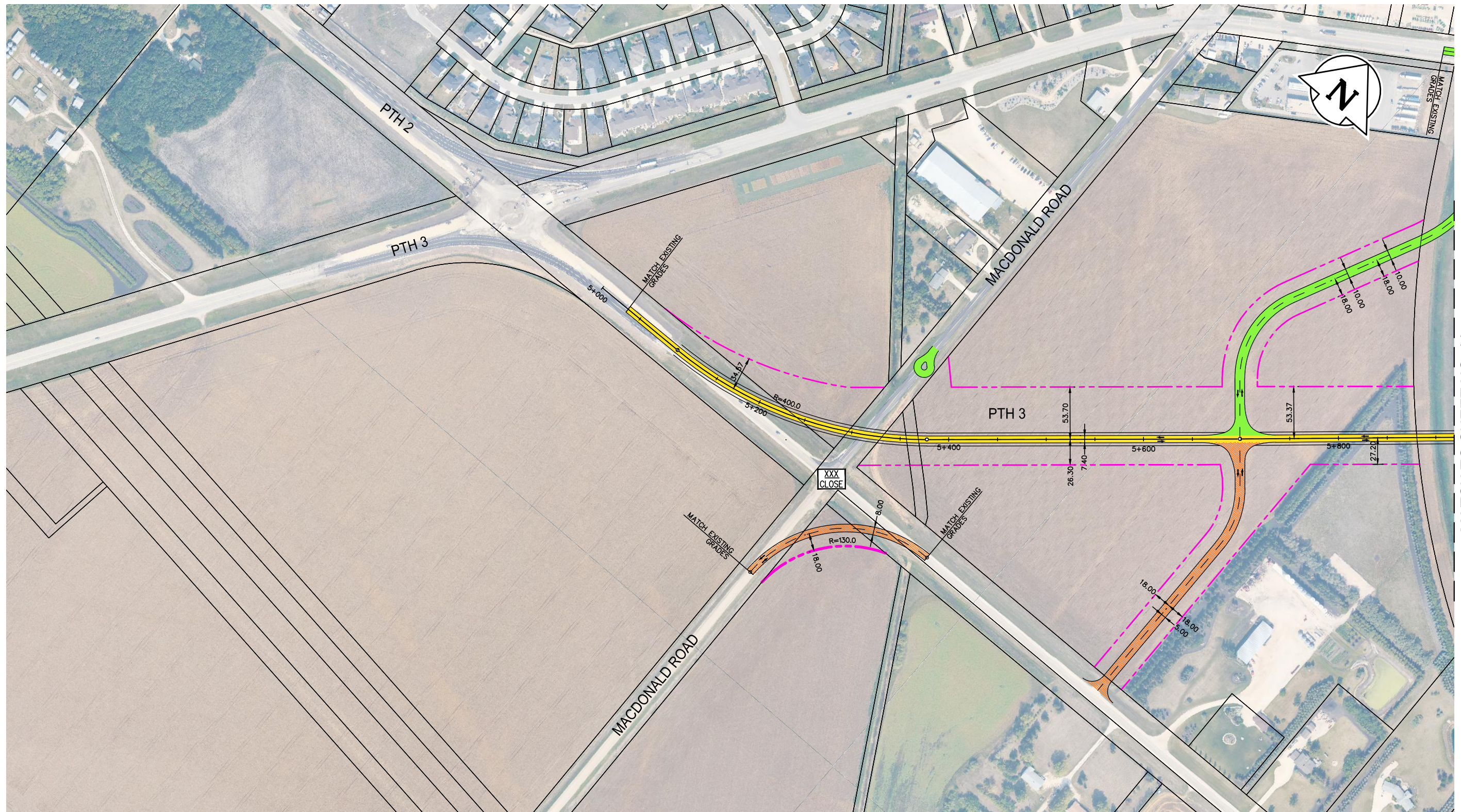
WSP Canada Group Limited  
Suite 111 - 93 Lombard Ave  
Winnipeg, MB R3B 3B1  
t. 204.943.3178  
f. 204.943.4948  
www.wsp.com

MANITOBA INFRASTRUCTURE  
SOUTH PERIMETER HIGHWAY DESIGN STUDY  
INITIAL STAGE PLANS  
PTH 100 AT PTH 3

NOTE:  
These design documents are prepared solely for the use by the party with whom the design professional has entered into a contract and there are no representations of any kind made by the design professional to any party with whom the design professional has not entered into a contract.

SCALE: 1:4000	DATE: 20-06-26	DWG. No. INT-100-A	SHEET. No. 11 OF 42
------------------	-------------------	-----------------------	------------------------





MATCH TO SHEET NO. 11

**LEGEND-PLAN:**

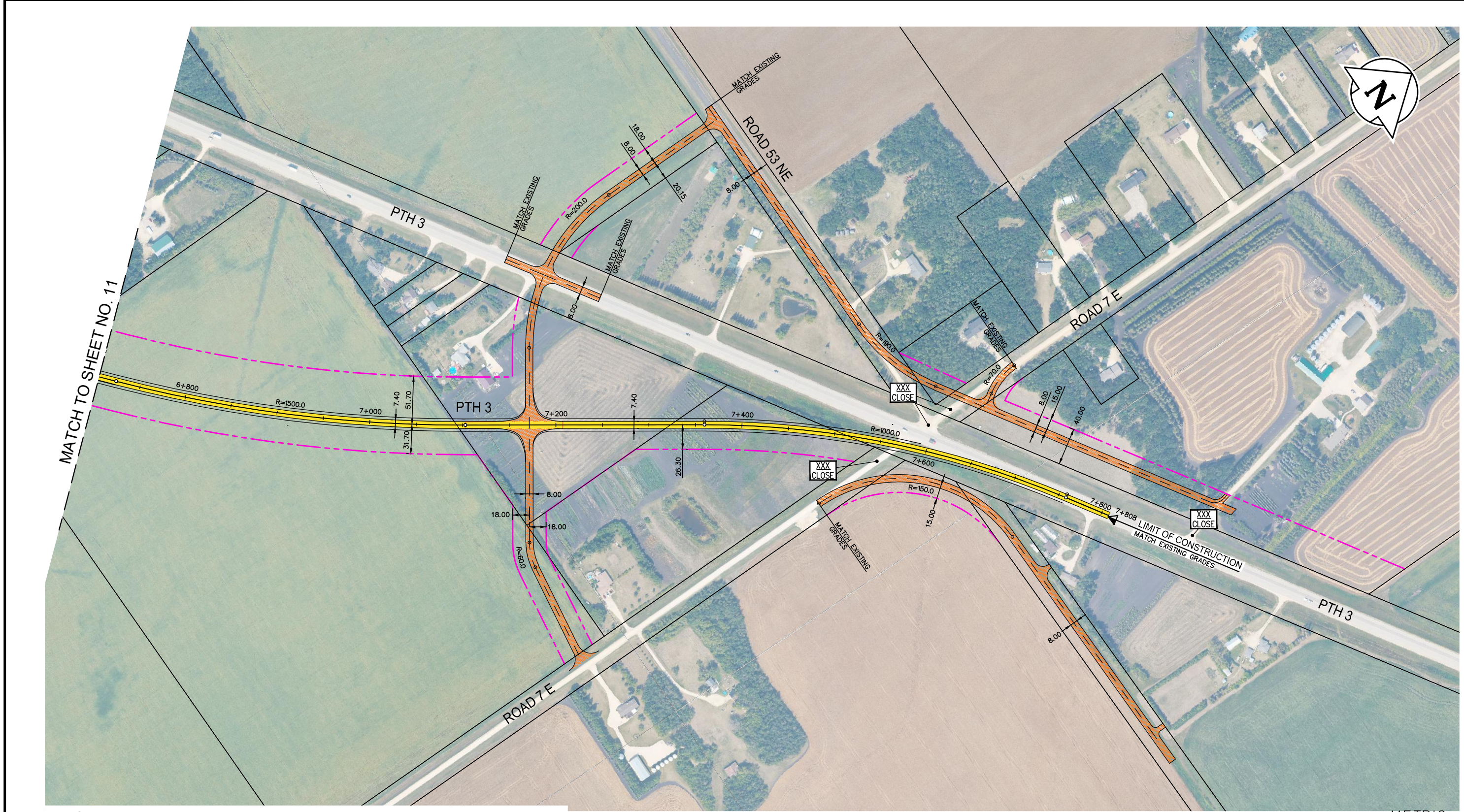
EXISTING PROPERTY LINE		CONCRETE	
PROPOSED PROPERTY LINE		GRAVEL	
RETAINING WALL		ASPHALT	
PROPOSED CULVERT		MULTI-USE TRAIL	
RAIL		DIRECTION OF DRAINAGE	
		ROAD CLOSURE	

NOTE:  
These design documents are prepared solely for the use by the party with whom the design professional has entered into a contract and there are no representations of any kind made by the design professional to any party with whom the design professional has not entered into a contract.

METRIC  
ALL MEASUREMENTS METRES,  
UNLESS STATED OTHERWISE

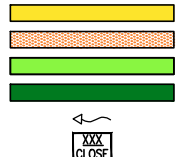
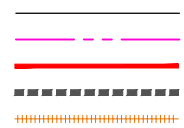
	WSP Canada Group Limited Suite 111 - 93 Lombard Ave Winnipeg, MB R3B 3B1 t. 204.943.3178 f. 204.943.4948 www.wsp.com		<b>MANITOBA INFRASTRUCTURE</b> <b>SOUTH PERIMETER HIGHWAY DESIGN STUDY</b> <b>INITIAL STAGE PLANS</b> <b>PTH 3 SOUTH OF PTH 100</b>	
	SCALE: 1:4000	DATE: 20-06-26	DWG. No. INT-100-A	SHEET. No. 12 OF 42





**LEGEND-PLAN:**

- EXISTING PROPERTY LINE
- PROPOSED PROPERTY LINE
- RETAINING WALL
- PROPOSED CULVERT
- RAIL
- CONCRETE
- GRAVEL
- ASPHALT
- MULTI-USE TRAIL
- DIRECTION OF DRAINAGE
- ROAD CLOSURE

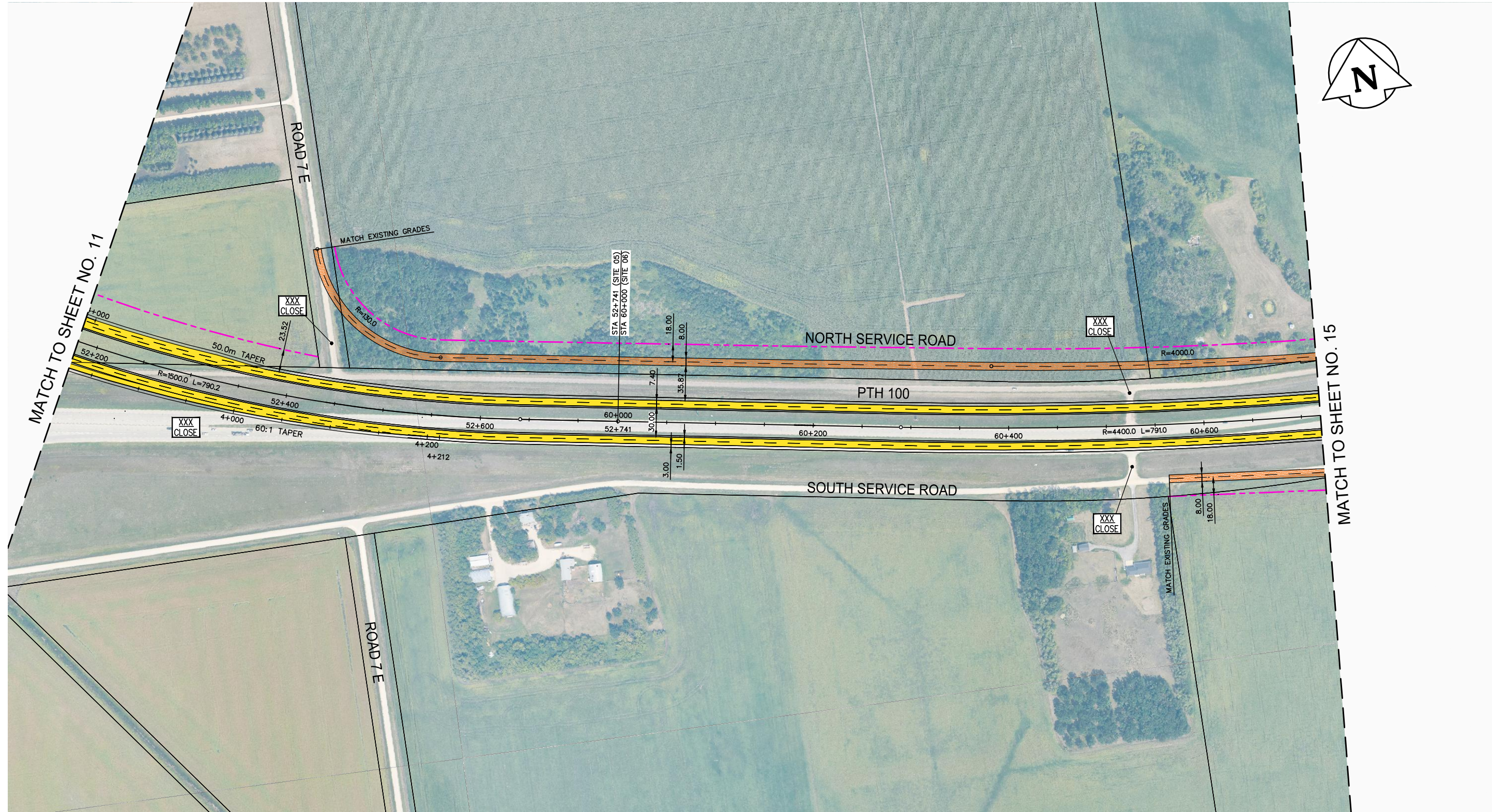


METRIC  
ALL MEASUREMENTS METRES,  
UNLESS STATED OTHERWISE

NOTE:  
These design documents are prepared solely for the use by the party with whom the design professional has entered into a contract and there are no representations of any kind made by the design professional to any party with whom the design professional has not entered into a contract.

	WSP Canada Group Limited Suite 111 - 93 Lombard Ave Winnipeg, MB R3B 3B1 t. 204.943.3178 f. 204.943.4948 www.wsp.com		<b>MANITOBA INFRASTRUCTURE</b> <b>SOUTH PERIMETER HIGHWAY DESIGN STUDY</b> INITIAL STAGE PLANS PTH 3 NORTH OF PTH 100	
	SCALE: 1:4000	DATE: 20-06-26	DWG. No. INT-100-A	SHEET. No. 13 OF 42





**LEGEND-PLAN:**

- |                        |  |                       |  |
|------------------------|--|-----------------------|--|
| EXISTING PROPERTY LINE |  | CONCRETE              |  |
| PROPOSED PROPERTY LINE |  | GRAVEL                |  |
| RETAINING WALL         |  | ASPHALT               |  |
| PROPOSED CULVERT       |  | MULTI-USE TRAIL       |  |
| RAIL                   |  | DIRECTION OF DRAINAGE |  |
|                        |  | ROAD CLOSURE          |  |

NOTE:  
These design documents are prepared solely for the use by the party with whom the design professional has entered into a contract and there are no representations of any kind made by the design professional to any party with whom the design professional has not entered into a contract.

METRIC  
ALL MEASUREMENTS METRES,  
UNLESS STATED OTHERWISE

WSP Canada Group Limited  
Suite 111 - 93 Lombard Ave  
Winnipeg, MB R3B 3B1  
t. 204.943.3178  
f. 204.943.4948  
www.wsp.com

<b>MANITOBA INFRASTRUCTURE</b>			
<b>SOUTH PERIMETER HIGHWAY DESIGN STUDY</b>			
<b>INITIAL STAGE PLANS</b>			
<b>PTH 100</b>			
SCALE:	DATE:	DWG. No.	SHEET. No.
1:4000	20-06-26	INT-100-A	14 OF 42