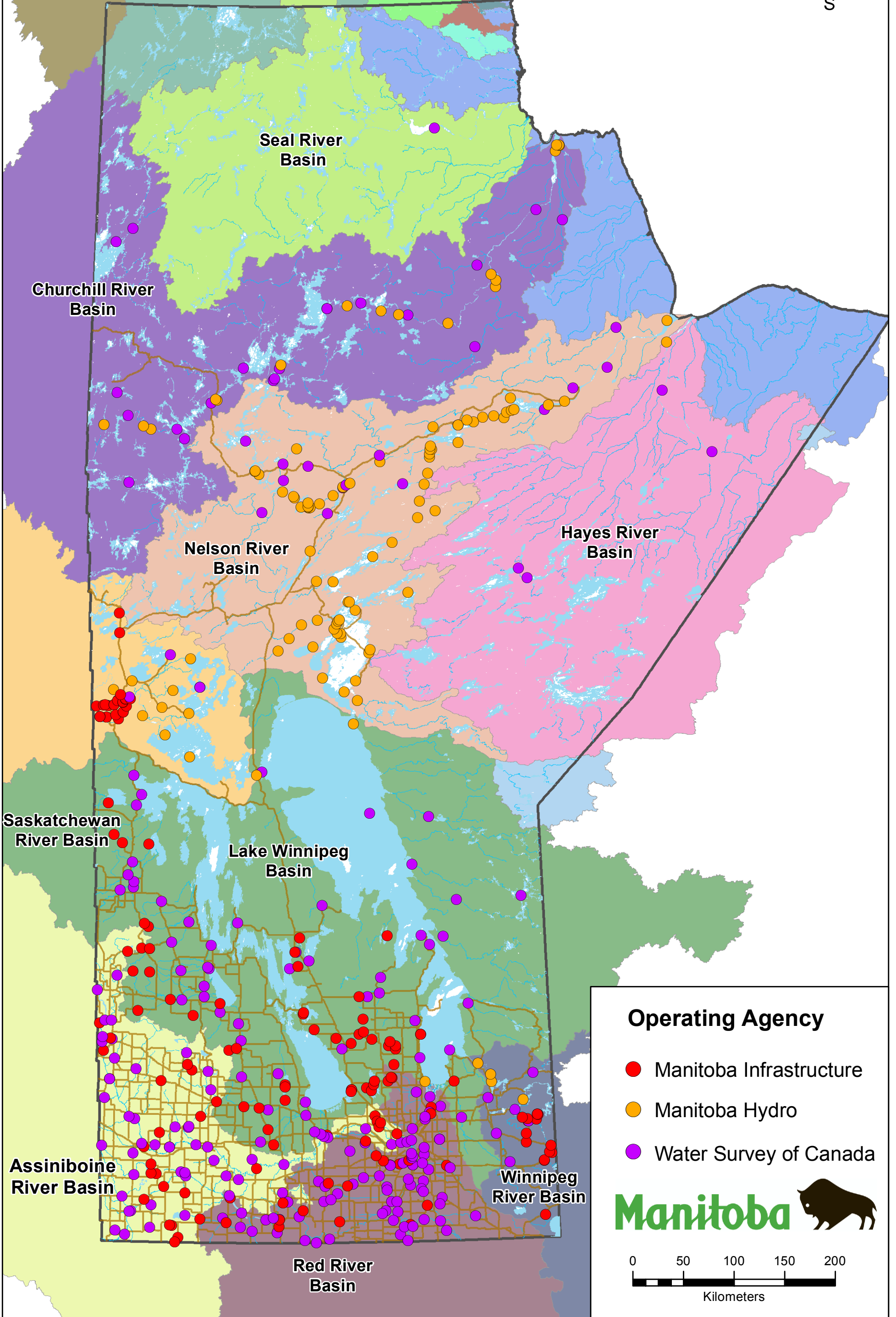
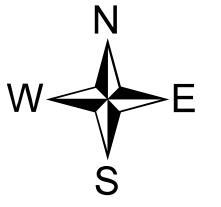
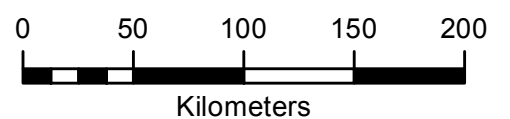


Active Hydrometric Stations in Manitoba



Operating Agency

- Manitoba Infrastructure
- Manitoba Hydro
- Water Survey of Canada



Station Number	Station Name	Operating Party	Operating Period (months)	Parameter Measured	Real-time Data Access	Archived Data Access
05UF706	Aiken River at York Landing	MBH	12	WL	05UF706	Request
05UH001	Angling River Near Bird	WSC	12	Q, WL	05UH001	05UH001
05NF002	Antler River Near Melita	WSC	8	Q, WL	05NF002	05NF002
05TG712	Apusigamasi Lake	MBH	12	WL	05TG712	Request
05MG001	Arrow River near Arrow River	WSC	8	Q, WL	05MG001	05MG001
05UF605	Assean Lake	MBH	12	WL	05UF605	Request
05MJ012	Assiniboine River at Baie St. Paul	WSC	8	WL	05MJ012	05MJ012
05MH001	Assiniboine River at Brandon	WSC	12	Q, WL	05MH001	05MH001
05MJ001	Assiniboine River At Headingley	WSC	12	Q, WL	05MJ001	05MJ001
05MD801	Assiniboine River at Shellmouth Bridge	MI	8	WL	NA	05MD801
05MG014	Assiniboine River East of Virden	WSC	12	WL	05MG014	05MG014
05MH005	Assiniboine River Near Holland	WSC	12	Q, WL	05MH005	05MH005
05ME006	Assiniboine River Near Miniota	WSC	8	Q, WL	05ME006	05ME006
05MJ003	Assiniboine River Near Portage La Prairie	WSC	8	Q, WL	05MJ003	05MJ003
05MG802	Assiniboine River near Virden	MI	12	WL	NA	05MG802
05MG013	Assiniboine River North of Griswold	WSC	12	WL	05MG013	05MG013
05ME011	Assiniboine River Southwest of St. Lazare	WSC	12	WL	05ME011	05ME011
05ME012	Assiniboine River West of Russell	WSC	12	Q, WL	05ME012	05ME012
05KG804	Athapapuskow Lake at Cranberry Portage	MI	8	WL	NA	Request
05KG005	Athapapuskow Lake at Bakers Narrow	MI	8	WL	NA	Request
04AA003	Back Lake near Oxford House	WSC	12	WL	04AA003	04AA003
05OA007	Badger Creek Near Cartwright	WSC	8	Q, WL	05OA007	05OA007
05MG015	Baileys Creek near Oak lake	WSC	8	Q, WL	05MG015	05MG015
05LJ803	Bald Hill Reservoir near McCreary	MI	8	WL	NA	05LJ803
05LL820	Bearcat Creek near Arden(P.R. 352)	MI	8	WL	NA	05LL820
05LG801	Beaver Lake near Pine River	MI	12	WL	NA	05LG801
05LF801	Bell Lake near Novra	MI	12	WL	NA	05LF801
05PG810	Betula Lake at Betula Lake Resort	MI	8	WL	NA	05PG810
05LN812	Big Dog Lake near Vogar	MI	8	WL	NA	Request
05LL821	Big Grass River above Jackfish Lake Dam	MI	8	WL	NA	05LL821
05LL823	Big Grass River near Gladstone	MI	8	WL	NA	05LL823
05LL015	Big Grass River Near Glenella	WSC	8	Q, WL	05LL015	05LL015
05LL822	Big Grass River near Langruth (P.R. 265)	MI	8	WL	NA	05LL822
05KG806	Big Island Lake near Flin Flon	MI	8	WL	NA	Request
05PG801	Big Whiteshell Lake at Big Whiteshell Lake	MI	12	WL	NA	05PG801
06FB702	Billard Lake near Churchill River Inlet	MBH	12	WL	06FB702	Request
05LE010	Birch River Near Birch River	WSC	8	Q, WL	05LE010	05LE010
05PH007	Birch River near Prawda	WSC	8	Q, WL	05PH007	05PH007
05TG747	Birchtree Lake above Birchtree Brook	MBH	12	WL	05TG747	Request
05PJ001	Bird River At Outlet Of Bird Lake	WSC	8	Q, WL	05PJ001	05PJ001
05ME003	Birdtail Creek Near Birtle	WSC	8	Q, WL	05ME003	05ME003
05RB003	Bloodvein River Above Bloodvein Bay	WSC	12	Q, WL	05RB003	05RB003
05OA801	Boissevain Reservoir near Boissevain	MI	12	WL	NA	05OA801
05OA019	Bone Lake outlet near Ninette	WSC	8	WL	05OA019	05OA019
05OF801	Boyne River above Carman Dam	MI	12	WL	05OF801	05OF801
05OF003	Boyne River Near Carman	WSC	8	Q, WL	05OF003	05OF003
05OF011	Boyne River near Roseisle	WSC	8	Q, WL	05OF011	05OF011
05PG807	Brereton Lake at Brereton Lake	MI	12	WL	NA	05PG807
05SA002	Brokenhead River Near Beausejour	WSC	8	Q, WL	05SA002	05SA002
05OC019	Buffalo Creek Near Rosenfeld	WSC	8	Q, WL	05OC019	05OC019
05SC801	Buffalo Lake near Poplarfield	MI	8	WL	NA	Request
05LN006	Burnt Lake Drain Northwest of Lundar	WSC	8	Q, WL	05LN006	05LN006
05TG746	Burntwood River above Birchtree Lake	MBH	12	WL	05TG746	Request
05TG707	Burntwood River above Birchtree Lake	MBH	12	WL	05TG707	Request
05TF722	Burntwood River above Early Morning Rapids	MBH	12	WL	05TF722	Request
05TE002	Burntwood River Above Leaf Rapids	WSC	12	Q, WL	05TE002	05TE002
05TG701	Burntwood River above Manasan Falls	MBH	12	WL	05TG701	Request
05TG005	Burntwood River Above Manasan Falls	WSC	12	WL	05TG005	05TG005
05TF723	Burntwood River below Early Morning Rapids	MBH	12	WL	05TF723	Request
05TG702	Burntwood River below Miles Hart Bridge	MBH	12	WL	05TG702	Request
05TF725	Burntwood River below Taskinigung Falls	MBH	12	WL	05TF725	Request
05TG703	Burntwood River in Birchtree Mine Pumphouse	MBH	12	WL	05TG703	Request
05TG001	Burntwood River Near Thompson	WSC	12	Q, WL	05TG001	05TG001
05LJ811	Burrows Lake near Merridale	MI	12	WL	NA	05LJ811
05PG806	Caddy Lake at Caddy Lake Campground	MI	8	WL	05PG806	05PG806
05KH802	Carrot River at Mile 9 Pumphouse	MI	8	WL	NA	Request
05KH015	Carrot River near The Pas	WSC	8	WL	05KH015	05KH015
05KH007	Carrot River near Turnberry	WSC	12	Q, WL	05KH007	05KH007
05UE701	Cauchon Lake	MBH	12	WL	05UE701	Request
05KL701	Cedar Lake at Oleson Point	MBH	12	WL	05KL701	Request
05KJ705	Cedar Lake at Pine Bluff	MBH	12	WL	05KJ705	Request

Operating Party

MI - Manitoba Infrastructure
WSC - Water Survey Canada
MBH - Manitoba Hydro

Parameter

Q - Flow
WL - Water Level

Station Number	Station Name	Operating Party	Operating Period (months)	Parameter Measured	Real-time Data Access	Archived Data Access
05KL005	Cedar Lake near Oleson Point	MBH	12	WL	05KL005	Request
05MD804	Childs Lake near Boggy Creek	MI	12	WL	NA	05MD804
06FD680	Churchill Met near Churchill River Weir	MBH	12	WL	NA	Request
06FB701	Churchill River above Fidler Lake	MBH	12	WL	06FB701	Request
06EA006	Churchill River Above Granville Falls	WSC	12	Q, WL	06EA006	06EA006
06EB004	Churchill River Above Leaf Rapids	WSC	12	Q, WL	06EB004	06EB004
06EB778	Churchill River above Leaf Rapids Rapids	MBH	12	WL	06EB778	Request
06FB707	Churchill River above Little Churchill River	MBH	12	WL	NA	Request
06FD001	Churchill River Above Red Head Rapids	WSC	12	Q, WL	06FD001	06FD001
06FD702	Churchill River above Swallow Rapids	MBH	12	WL	06FD702	Request
06FD706	Churchill River at CR30	MBH	12	WL	06FD706	Request
06FD681	Churchill River at Little Churchill River	MBH	12	WL	NA	Request
06FD703	Churchill River below Churchill Weir fishway	MBH	12	WL	06FD703	Request
06FB001	Churchill River Below Fidler Lake	WSC	12	Q, WL	06FB001	06FB001
06EB702	Churchill River below Leaf Rapids Rapids	MBH	12	WL	06EB702	Request
05KK708	Clearwater Lake at Guy Hill	MBH	12	WL	05KK708	Request
05NG810	Coatstone Reservoir near Deloraine	MI	8	WL	NA	05NG810
06DA002	Cochrane River near Brochet	WSC	12	Q, WL	06DA002	06DA002
05MJ809	Colony Creek near Rosser	MI	8	WL	NA	Request
05ME005	Conjuring Creek Near Russell	WSC	8	Q, WL	05ME005	05ME005
05OJ019	Cooks Creek Below Cooks Creek Diversion	WSC	8	Q, WL	05OJ019	05OJ019
05OJ020	Cooks Creek Diversion At Inlet	WSC	8	Q, WL	05OJ020	05OJ020
05KK002	Cormorant Lake at Cormorant	WSC	12	WL	05KK002	05KK002
05MJ806	Crescent Lake at Portage La Prairie	MI	8	WL	NA	Request
05UD001	Cross Lake At Cross Lake	MBH	12	WL	05UD001	Request
05LM804	Crossen Marsh near Steep Rock	MI	8	WL	NA	Request
05OB801	Crystal City Reservoir at Crystal City	MI	8	WL	NA	05OB801
05OB010	Cypress Creek Near Clearwater	WSC	8	Q, WL	05OB010	05OB010
05MH008	Cypress River Near Bruxelles	WSC	8	Q, WL	05MH008	05MH008
05LJ816	Dauphin Lake at Ochre Beach	MI	12	WL	NA	05LJ816
05LJ009	Dauphin Lake At Outlet	WSC	12	WL	05LJ009	05LJ009
05LM006	Dauphin River Near Dauphin River	WSC	12	Q, WL	05LM006	05LM006
05OC016	Dead Horse Creek Near Rosenfeld	WSC	8	Q, WL	05OC016	05OC016
06FD002	Deer River North Of Belcher	WSC	12	Q, WL	06FD002	06FD002
05NG814	Deloraine Reservoir near Deloraine	MI	12	WL	05NG814	05NG814
05SB801	Dennis Lake near Malonton	MI	12	WL	NA	05SB801
05OJ016	Devils Creek Near Libau	WSC	8	Q, WL	05OJ016	05OJ016
05UD705	Duck Lake	MBH	12	WL	05UD705	Request
05LN814	Dufault Lake	MI	8	WL	NA	Request
06EB007	Eager Lake Near Tod Lake	WSC	12	WL	06EB007	06EB007
05MD805	East Blue Lake at Campground Beach	MI	8	WL	NA	Request
05SD004	East Fisher River near Hodgson	WSC	8	Q, WL	05SD004	05SD004
05UB717	East Nelson River ADCM below Sea River Falls	MBH	12	WL	05UB717	Request
05LN807	East Shoal Lake	MI	8	WL	NA	Request
05SB809	Einarson Swamp near Hnusa	MI	8	WL	NA	Request
05NG012	Elgin Creek Near Souris	WSC	8	Q, WL	05NG012	05NG012
05NG803	Elgin Reservoir near Elgin	MI	12	WL	NA	05NG803
05OG005	Elm Creek Channel Near Elm Creek	WSC	8	Q, WL	05OG005	05OG005
05MH007	Epinette Creek Near Carberry	WSC	8	Q, WL	05MH007	05MH007
05LM001	Fairford River Near Fairford	WSC	12	Q, WL	05LM001	05LM001
05PD801	Falcon Lake at Falcon Lake	MI	12	WL	05PD801	05PD801
05PD803	Falcon River below Falcon Lake Control Structure	MI	8	WL	NA	Request
05RD006	Family Lake At Little Grand Rapids	WSC	12	WL	05RD006	05RD006
05SB802	Fish Lake at North Lake	MI	8	WL	NA	Request
05SB804	Fish Lake at Simmenski's	MI	8	WL	NA	Request
05SB803	Fish Lake at Singbiels	MI	8	WL	NA	Request
05SD003	Fisher River Near Dallas	WSC	8	Q, WL	05SD003	05SD003
05SD005	Fisher River near Fisherton	WSC	8	Q, WL	05SD005	05SD005
05TF001	Footprint Lake At Nelson House	WSC	12	WL	05TF001	05TF001
05TF002	Footprint River Above Footprint Lake	WSC	12	Q, WL	05TF002	05TF002
05NF007	Gainsborough Creek Near Lyleton	WSC	8	Q, WL	05NF007	05NF007
05LG003	Garland River Near Garland River	WSC	8	Q, WL	05LG003	05LG003
06FA001	Gauer River Above Thorsteinson Lake	WSC	12	Q, WL	06FA001	06FA001
04AD002	Gods River near Shamattawa	WSC	12	Q, WL	04AD002	04AD002
06FD704	Goose Creek above Churchill Weir	MBH	12	WL	06FD704	Request
06FD726	Goose Creek below Churchill Weir	MBH	12	WL	06FD726	Request
05KG802	Goose Lake at Simonhouse	MI	8	WL	NA	Request
05PG804	Goose Pond near Rennie	MI	8	WL	NA	Request
05KG803	Goose River above Goose River Dam	MI	8	WL	NA	Request
05MG003	Gopher Creek near Virden	WSC	8	Q, WL	05MG003	05MG003
05OB034	Goudney Reservoir Near Pilot Mound	MI	12	WL	05OB034	05OB034

Operating Party

MI - Manitoba Infrastructure
WSC - Water Survey Canada
MBH - Manitoba Hydro

Parameter

Q - Flow
WL - Water Level

Station Number	Station Name	Operating Party	Operating Period (months)	Parameter Measured	Real-time Data Access	Archived Data Access
05KJ824	Grace Lake near The Pas	MI	12	WL	NA	05KJ824
05NF008	Graham Creek near Melita	WSC	8	Q, WL	05NF008	05NF008
05MJ802	Grants Lake above Grants Dam	MI	8	WL	NA	05MJ802
06EB002	Granville Lake At Granville Lake	WSC	12	WL	06EB002	06EB002
05TD001	Grass River Above Standing Stone Falls	WSC	12	Q, WL	05TD001	05TD001
05OJ017	Grassmere Creek Drain Near Middlechurch	WSC	8	Q, WL	05OJ017	05OJ017
05PG813	Green Lake in Whiteshell Provincial Park	MI	8	WL	NA	Request
05SA801	Gull Lake at Sherwood	MI	8	WL	NA	05SA801
05UA003	Gunisao River Above Jam Rapids	MBH	12	Q, WL	05UA003	Request
05PG808	Hanson Creek above Hansons Creek Dam	MI	8	WL	NA	Request
04AB719	Hayes River below Blackwater Creek	MBH	12	WL	04AB719	Request
04AB001	Hayes River below Gods River	WSC	12	Q, WL	04AB001	04AB001
04AA004	Hayes River below Trout Falls	WSC	12	Q, WL	04AA004	04AA004
05UC704	Hill Lake near Minago River Inlet	MBH	12	WL	05UC704	Request
05UC703	Hill Lake near Minago River Outlet	MBH	12	WL	05UC703	Request
05SC002	Icelandic River Near Riverton	WSC	8	Q, WL	05SC002	05SC002
05LN809	Island Lake near Lundar	MI	8	WL	NA	Request
05LJ807	Jackfish Lake near Grandview	MI	12	WL	NA	05LJ807
05LL802	Jackson Lake near Sidney	MI	12	WL	05LL802	05LL802
05PG809	Jessica Lake above Jessica Lake Dam	MI	12	WL	NA	05PG809
05LN813	Johnson Lake near Erinview	MI	8	WL	NA	Request
05OE007	Joubert Creek At St-Pierre-Jolys	WSC	8	Q, WL	05OE007	05OE007
05OE015	Joubert Creek near Pansy	WSC	8	Q, WL	05OE015	05OE015
05MG803	Kenton Reservoir near Kenton	MI	12	WL	NA	05MG803
05UF004	Kettle River Near Gillam	WSC	12	Q, WL	05UF004	05UF004
05OA803	Killarney Lake at Killarney	MI	12	WL	NA	05OA803
05UB013	Kiskitto Lake Near Norway House	MBH	12	WL	05UB013	05UB013
05UB017	Kiskittogisu Lake At Whiskey Jack Landing	MBH	12	WL	05UB017	Request
05OC024	Kronsgart Drain Near Sewell	WSC	8	Q, WL	05OC024	05OC024
05OG806	La Salle River above Sanford Dam	MI	12	WL	NA	05OG806
05OG804	La Salle River above St. Norbert Dam	MI	12	WL	NA	05OG804
05OG805	La Salle River above Starbuck Dam (P.R. 332)	MI	8	WL	NA	05OG805
05OG807	La Salle River at Elie	MI	12	WL	NA	05OG807
05OG801	La Salle River at Hampson Dam	MI	12	WL	NA	05OG801
05OG002	La Salle River at La Salle	WSC	8	WL	05OG002	05OG002
05OG008	La Salle River near Elie	WSC	8	Q, WL	05OG008	05OG008
05OG001	La Salle River Near Sanford	WSC	12	Q, WL	05OG001	05OG001
05LN806	Lake Francis below St.Laurent Dam No.1	MI	12	WL	NA	Request
05LN805	Lake Francis near St. Laurent	MI	12	WL	NA	05LN805
05LL809	Lake Irwin near Neepawa	MI	12	WL	NA	05LL809
05LK002	Lake Manitoba At Steeprock	WSC	12	WL	05LK002	05LK002
05LL012	Lake Manitoba Near Westbourne	WSC	12	WL	05LL012	05LL012
05OC027	Lake Minnewasta Near Morden	MI	12	WL	05OC027	05OC027
05MD011	Lake Of The Prairies Near Roblin	WSC	8	WL	05MD011	05MD011
05MD009	Lake Of The Prairies Near Shellmouth	WSC	12	WL	05MD009	05MD009
05LM801	Lake Pineimuta near St. Martin	MI	12	WL	NA	05LM801
05SD802	Lake St. George near Koostatak	MI	8	WL	NA	05SD802
05LM005	Lake St.Martin Near Hilbre	WSC	12	WL	05LM005	05LM005
05MF020	Lake Wahtopanah Near Rivers	WSC	12	WL	05MF020	05MF020
05RD005	Lake Winnipeg At Berens River	WSC	12	WL	05RD005	05RD005
05RE003	Lake Winnipeg At George Island	WSC	12	WL	05RE003	05RE003
05SB006	Lake Winnipeg At Gimli	WSC	12	WL	05SB006	05SB006
05SD002	Lake Winnipeg At Matheson Island Landing	WSC	12	WL	05SD002	05SD002
05SG001	Lake Winnipeg At Mission Point	WSC	12	WL	05SG001	05SG001
05RF001	Lake Winnipeg at Montreal Point	MBH	12	WL	05RF001	Request
05SD001	Lake Winnipeg At Pine Dock	WSC	12	WL	05SD001	05SD001
05SA003	Lake Winnipeg At Victoria Beach	WSC	12	WL	05SA003	05SA003
05LD002	Lake Winnipegosis at Dawson Bay	WSC	8	WL	05LD002	05LD002
05LH001	Lake Winnipegosis At Winnipegosis	WSC	12	WL	05LH001	05LH001
06EB779	Laurie River 0.6 km below Laurie Dam	MBH	12	WL	NA	Request
06EB694	Laurie River Airport Met Station	MBH	12	WL	06EB694	Request
05TF784	Leftrook Lake	MBH	12	WL	NA	Request
05UG001	Limestone River Near Bird	WSC	12	Q, WL	05UG001	05UG001
06FB002	Little Beaver River Near Mouth	WSC	12	Q, WL	06FB002	06FB002
06FC701	Little Churchill River above Churchill River	MBH	12	WL	06FC701	Request
06FC001	Little Churchill River Above Recluse Lake	WSC	12	Q, WL	06FC001	06FC001
05OF024	Little Morris River near Rosenort	WSC	8	Q, WL	05OF024	05OF024
05MF801	Little Saskatchewan River above Rapid City Dam	MI	12	WL	NA	05MF801
05MF024	Little Saskatchewan River Near Horod	WSC	8	Q, WL	05MF024	05MF024
05MF001	Little Saskatchewan River Near Minnedosa	WSC	12	Q, WL	05MF001	05MF001
05MF018	Little Saskatchewan River near Rivers	WSC	8	Q, WL	05MF018	05MF018

Operating Party

MI - Manitoba Infrastructure
WSC - Water Survey Canada
MBH - Manitoba Hydro

Parameter

Q - Flow
WL - Water Level

Station Number	Station Name	Operating Party	Operating Period (months)	Parameter Measured	Real-time Data Access	Archived Data Access
05MH006	Little Souris River Near Brandon	WSC	8	Q, WL	05MH006	05MH006
05PG805	Lone Island Lake at Lone Island Lake Landing	MI	8	WL	NA	Request
05OA006	Long River Near Holmfield	WSC	8	Q, WL	05OA006	05OA006
06EB703	Loon Lake at Loon River Dam	MBH	12	WL	06EB703	Request
05OD028	Main Drain near Dominion City	WSC	8	Q, WL	05OD028	05OD028
05SB808	Malo Lake near Hnaua	MI	8	WL	NA	Request
05RA001	Manigotogan River near Manigotagan	WSC	12	Q, WL	05RA001	05RA001
05OE006	Manning Canal Near Ile Des Chenes	WSC	8	Q, WL	05OE006	05OE006
05OE010	Marsh River Near Otterbourne	WSC	8	Q, WL	05OE010	05OE010
05OB014	Mary-Jane Reservoir Near La Riviere	MI	12	WL	05OB014	05OB014
05LJ027	Mckinnon Creek Near McCreary	WSC	8	Q, WL	05LJ027	05LJ027
05NG020	Medora Creek Near Napinka	WSC	8	Q, WL	05NG020	05NG020
05NF804	Metigoshe Lake near Metigoshe	MI	12	WL	NA	05NF804
05UC701	Minago River below Drunkin Lake	MBH	12	WL	05UC701	Request
05UC702	Minago River below Hill Lake	MBH	12	WL	05UC702	Request
05LJ019	Mink Creek Near Ethelbert	WSC	8	Q, WL	05LJ019	05LJ019
05MF806	Minnedosa Lake near Minnedosa	MI	12	WL	NA	Request
06EC713	Missi Falls Met Station	MBH	12	WL	NA	Request
05PD802	Moose Lake near Sprague	MI	12	WL	NA	05PD802
05OF025	Morris River at Brunkild	WSC	8	WL	05OF025	05OF025
05OF020	Morris River Near Rosenort	WSC	8	Q, WL	05OF020	05OF020
05LJ025	Mossy River Below Outlet Of Dauphin Lake	WSC	12	Q, WL	05LJ025	05LJ025
05OB021	Mowbray Creek Near Mowbray	WSC	12	Q, WL	05OB021	05OB021
05UB008	Nelson River (East Channel) Below Sea River Falls	MBH	12	Q, WL	NA	05UB008
05UB009	Nelson River (West Channel) at Jenpeg	MBH	12	Q, WL	NA	05UB009
05UD703	Nelson River above Cross lake Weir	MBH	12	WL	05UD703	Request
05UB701	Nelson River above Jenpeg GS	MBH	12	WL	05UB701	Request
05UB702	Nelson River above Ominawin Bypass Channel	MBH	12	WL	05UB702	Request
05UE711	Nelson River at Edna Bay	MBH	12	WL	05UE711	Request
05UE703	Nelson River at junction of Clearwater River	MBH	12	WL	05UE703	Request
05UE715	Nelson River at junction of Goose Hunting River	MBH	12	WL	05UE715	Request
05UF791	Nelson River at junction of Grass River	MBH	12	WL	05UF791	Request
05UE713	Nelson River at Kaministikwaskwak Bay	MBH	12	WL	05UE713	Request
05UE005	Nelson River at Kelsey Generating Station	MBH	12	Q, WL	NA	05UE005
05UF006	Nelson River at Kettle Generating Station	MBH	12	Q, WL	NA	05UF006
05UF007	Nelson River at Long Spruce Generating Station	MBH	12	Q, WL	NA	05UF007
05UB001	Nelson River At Norway House	MBH	12	WL	05UB001	05UB001
05UH737	Nelson River at Port Nelson	MBH	12	WL	05UH737	Request
05UE710	Nelson River at Sinclair Bay	MBH	12	WL	05UE710	Request
05UF766	Nelson River below Clarke Lake Entrance	MBH	12	WL	05UF766	Request
05UF759	Nelson River below Clarke Lake Exit	MBH	12	WL	05UF759	Request
05UD701	Nelson River below Cross Lake Weir	MBH	12	WL	05UD701	Request
05UF792	Nelson River below mouth of Grass River	MBH	12	WL	05UF792	Request
05UB703	Nelson River below Ominawin Bypass Channel	MBH	12	WL	05UB703	Request
05UE714	Nelson River below Railway Bridge	MBH	12	WL	05UE714	Request
05UE712	Nelson River below Sipiwesk Lake	MBH	12	WL	05UE712	Request
05KG801	Neso Lake near Bakers Narrow	MI	8	WL	NA	Request
05OJ008	Netley Creek Near Petersfield	WSC	8	Q, WL	05OJ008	05OJ008
05OF026	Norquay Channel near Homewood	WSC	8	Q, WL	05OF026	05OF026
05OJ828	Norris Lake near Teulon at Airport	MI	8	WL	NA	Request
05OJ827	Norris Lake near Teulon at Control Structure	MI	8	WL	NA	Request
05LG004	North Duck River At Cowan	WSC	8	Q, WL	05LG004	05LG004
05KK709	North Moose Lake	MBH	12	WL	05KK709	Request
05KK005	North Moose Lake at Moose Lake Control Structure	WSC	12	WL	05KK005	05KK005
05LN004	North Shoal Lake near Inwood	MI	12	WL	NA	Request
05LF802	North Steeprock Lake near Bellsite	MI	12	WL	NA	05LF802
05MF804	North Thomas Lake near Sandy Lake	MI	8	WL	NA	05MF804
06FA701	Northern Indian Lake	MBH	12	WL	06FA701	Request
05TF710	Notigi Forebay	MBH	12	WL	05TF710	Request
05TF710	Notigi Forebay MET site	MBH	12	WL	05TF710	Request
05PF070	Nutimik Lake At Nutimik Lake	WSC	12	WL	05PF070	05PF070
05NG010	Oak Creek near Stockton	WSC	8	Q, WL	05NG010	05NG010
05NG813	Oak Lake at Oak Lake Resort	MI	12	WL	05NG813	05NG813
05LF802	Oak Lake near Poplarfield	MI	8	WL	NA	Request
05MG004	Oak River Near Rivers	WSC	8	Q, WL	05MG004	05MG004
05LJ005	Ochre River At Ochre River	WSC	8	Q, WL	05LJ005	05LJ005
05TG003	Odei River Near Thompson	WSC	12	Q, WL	05TG003	05TG003
05MJ013	Omands Creek near Empress Street East	WSC	8	Q, WL	05MJ013	05MJ013
05TF707	Opegano Lake near Burntwood River inlet	MBH	12	WL	05TF707	Request
05SD801	Otter Lake near Broad Valley	MI	12	WL	NA	05SD801
05LD001	Overflowing River at Overflowing River	WSC	8	Q, WL	05LD001	05LD001

Operating Party

MI - Manitoba Infrastructure
WSC - Water Survey Canada
MBH - Manitoba Hydro

Parameter

Q - Flow
WL - Water Level

Station Number	Station Name	Operating Party	Operating Period (months)	Parameter Measured	Real-time Data Access	Archived Data Access
05OE014	Pansy Drain near Sarto	WSC	8	Q, WL	05OE014	05OE014
06FA703	Partridge Breast Lake	MBH	12	WL	06FA703	Request
05KH801	Pasquia B1 Drain above Pumping Plant (Mile 9) Near The Pas	MI	12	WL	NA	Request
05KH803	Pasquia Drain O above Pumping Plant No.1 (Mile 14) Near The Pas	MI	12	WL	NA	Request
05KH804	Pasquia Drain O below Pumping Plant No.1 (Mile 14) Near The Pas	MI	12	WL	NA	Request
05KH805	Pasquia Drain P above Pumping Plant (Mile 18) Near The Pas	MI	12	WL	NA	Request
05KH806	Pasquia Drain P below Pumping Plant (Mile 18) Near The Pas	MI	12	WL	NA	Request
05KJ814	Pasquia Drain Q above Control Structure "1" Near The Pas	MI	12	WL	NA	Request
05KJ804	Pasquia Drain Z above Pumping Plant No.2 Near The Pas	MI	12	WL	NA	Request
05KJ808	Pasquia Lake Drain above Big Lake Control Structure Near The Pas	MI	12	WL	NA	Request
05KJ806	Pasquia Lake Drain above Victor Jory Pumping Station	MI	12	WL	NA	Request
05KJ825	Pasquia Lake Drain at Howell & Dunfield Drain Near The Pas	MI	12	WL	NA	Request
05KJ809	Pasquia Lake Drain below Big Lake Control Structure Near The Pas	MI	12	WL	NA	Request
05KJ810	Pasquia River at Dairy Road Bridge Near The Pas	MI	12	WL	NA	Request
05KJ802	Pasquia River at PR 283 Pumping Plant No 2 Near The Pas	MI	12	WL	NA	Request
05KJ805	Pasquia River at Young Point	MI	12	WL	NA	Request
05KJ807	Pasquia River below Pasquia Lake Drain (Victor Jory Pumping Station)	MI	12	WL	NA	Request
05LL027	Pelican Creek South Tributary Near Birnie	WSC	8	Q, WL	05LL027	05LL027
05OA802	Pelican Lake near Ninette	MI	12	WL	NA	05OA802
05OA010	Pembina River Above Lorne Lake	WSC	8	Q, WL	05OA010	05OA010
05OB001	Pembina River At La Riviere	WSC	8	Q, WL	05OB001	05OB001
05OB023	Pembina River Below Crystal Creek	WSC	8	Q, WL	05OB023	05OB023
05OC004	Pembina River Near Neche	WSC	12	Q, WL	05OC004	05OC004
05OB019	Pembina River near Outlet of Swan Lake	WSC	8	Q, WL	05OB019	05OB019
05OB007	Pembina River Near Windygates	WSC	12	Q, WL	05OB007	05OB007
05OA001	Pembina River North of Killarney	WSC	8	Q, WL	05OA001	05OA001
05LL824	Pine Creek near Firdale (P.R. 352)	MI	8	WL	NA	05LL824
05LL014	Pine Creek Near Melbourne	WSC	12	Q, WL	05LL014	05LL014
05NG003	Pipestone Creek Near Pipestone	WSC	8	Q, WL	05NG003	05NG003
05NG024	Pipestone Creek Near The Saskatchewan Boundary	WSC	12	Q, WL	05NG024	05NG024
05UB704	Playgreen lake above Whiskey Jack Narrows	MBH	12	WL	05UB704	Request
05UB710	Playgreen Lake at Entrance to 8-Mile Channel	MBH	12	WL	05UB710	Request
05UB005	Playgreen Lake At Entrance To Nelson River	MBH	12	WL	05UB005	05UB005
05LJ808	Pleasant Valley Reservoir near Petlura	MI	12	WL	NA	05LJ808
05NG007	Plum Creek Near Souris	WSC	8	Q, WL	05NG007	05NG007
05NG801	Plum Lake above Deleau Dam	MI	8	WL	NA	05NG801
05NG809	Plum Lake near Findlay	MI	8	WL	NA	05NG809
05LL019	Portage Diversion Near Portage La Prairie	WSC	8	Q, WL	05LL019	05LL019
05MJ006	Portage Reservoir Near Portage La Prairie	WSC	8	WL	05MJ006	05MJ006
06EA012	Pukatawagan Lake at Pukatawagan	WSC	12	WL	06EA012	06EA012
05LL021	Rat Creek near Macdonald	WSC	8	Q, WL	05LL021	05LL021
05TF004	Rat Lake Near Notigi Control Structure	WSC	12	WL	05TF004	05TF004
05OE001	Rat River Near Otterbourne	WSC	8	Q, WL	05OE001	05OE001
05OE004	Rat River Near Sundown	WSC	8	Q, WL	05OE004	05OE004
05LC003	Red Deer Lake near The Pas	MI	12	WL	NA	Request
05LC004	Red Deer River near the mouth	WSC	8	Q, WL	05LC004	05LC004
05OC021	Red River Above Floodway Control Structure	WSC	8	WL	05OC021	05OC021
05OC026	Red River Above Red River Floodway	WSC	8	WL	05OC026	05OC026
05OJ022	Red River at Breezy Point	WSC	8	WL	05OJ022	05OJ022
05OJ829	Red River at East Selkirk Generating Plan	MI	12	WL	NA	05OJ829
05OC001	Red River At Emerson	WSC	12	Q, WL	05OC001	05OC001
05OJ015	Red River At James Ave Pumping Station	WSC	12	Q, WL	05OJ015	05OJ015
05OC006	Red River at Morris	WSC	8	WL	05OC006	05OC006
05OJ005	Red River at Selkirk	WSC	12	Q, WL	05OJ005	05OJ005
05OC028	Red River at St. Adolphe	WSC	8	WL	05OC028	05OC028
05OC009	Red River at St. Jean Baptiste	WSC	8	WL	05OC009	05OC009
05OC020	Red River Below Floodway Control Structure	WSC	8	WL	05OC020	05OC020
05OC029	Red River Floodway at Trans Canada Highway	WSC	8	Q, WL	05OC029	05OC029
05OC017	Red River Floodway Near St. Norbert	WSC	8	Q, WL	05OC017	05OC017
05OC010	Red River Near Letellier	WSC	8	WL	05OC010	05OC010
05OC012	Red River Near St. Agathe	WSC	12	Q, WL	05OC012	05OC012
05OC008	Red River Near St. Norbert	WSC	8	Q, WL	05OC008	05OC008
05OJ021	Red River Upstream of St Andrews Dam at Lockport	WSC	8	WL	05OJ021	05OJ021
06DB001	Reindeer Lake At Brochet	WSC	12	WL	06DB001	06DB001
05OC022	Riviere Aux Marais Near Christie	WSC	8	Q, WL	05OC022	05OC022
05LE005	Roaring River Near Minitonas	WSC	8	Q, WL	05LE005	05LE005
05OB027	Rock Lake Near Glenora	WSC	8	WL	05OB027	05OB027
05MF008	Rolling River Near Erickson	WSC	8	Q, WL	05MF008	05MF008
05OD802	Roseau River at Dominion City Dam (P.R.200)	MI	12	WL	NA	05OD802
05OD004	Roseau River At Gardenton	WSC	8	Q, WL	05OD004	05OD004
05OD001	Roseau River Near Dominion City	WSC	8	Q, WL	05OD001	05OD001

Operating Party

MI - Manitoba Infrastructure
WSC - Water Survey Canada
MBH - Manitoba Hydro

Parameter

Q - Flow
WL - Water Level

Station Number	Station Name	Operating Party	Operating Period (months)	Parameter Measured	Real-time Data Access	Archived Data Access
05KK712	Rosebud Creek below PR 384	MBH	12	WL	05KK712	Request
05OF009	Roseisle Creek Near Roseisle	WSC	8	Q, WL	05OF009	05OF009
05RD011	Round Lake At Outlet	WSC	12	WL	05RD011	05RD011
06EB006	Russell Lake Near Herriot	WSC	12	WL	06EB006	06EB006
05MF805	Sandy Lake at Sandy Lake	MI	8	WL	NA	Request
05TG006	Sapochi River Near Nelson House	WSC	12	Q, WL	05TG006	05TG006
05KH701	Saskatchewan River above The Pas	MBH	12	WL	05KH701	Request
05KL001	Saskatchewan River at Grand Rapids	MBH	12	Q, WL	NA	05KL001
05KJ704	Saskatchewan River at Kelsey Lake	MBH	12	WL	05KJ704	Request
05KJ803	Saskatchewan River at Pumping Plant No. 2 Near The Pas	MI	8	WL	NA	Request
05KJ001	Saskatchewan River at The Pas	WSC	12	Q, WL	05KJ001	05KJ001
05KG805	Schist Lake near Flin Flon	MI	12	WL	NA	Request
05ME009	Scissor Creek Near McAuley	WSC	8	Q, WL	05ME009	05ME009
06GD001	Seal River Below Great Island	WSC	12	Q, WL	06GD001	06GD001
05OH802	Seine River at Ste. Anne	MI	8	WL	NA	05OH802
05OE011	Seine River Diversion Near Ile Des Chenes	WSC	8	Q, WL	05OE011	05OE011
05OH007	Seine River Near Ste. Anne	WSC	8	Q, WL	05OH007	05OH007
05OH009	Seine River South Of Prairie Grove	WSC	8	Q, WL	05OH009	05OH009
05TC701	Setting Lake above Sasgiu Rapids	MBH	12	WL	NA	Request
05OF014	Shannon Creek Near Morris	WSC	8	Q, WL	05OF014	05OF014
05NF805	Sharpe Lake near Deloraine	MI	8	WL	NA	05NF805
05MD005	Shell River Near Inglis	WSC	12	Q, WL	05MD005	05MD005
05MD007	Shell River near Roblin	WSC	8	Q, WL	05MD007	05MD007
05KK711	Shirley Lake	MBH	12	WL	05KK711	Request
05MG806	Shoal Lake above outlet control structure	MI	8	WL	NA	Request
05PD004	Shoal Lake at Indian Bay	CITY OF WPG	12	WL	NA	05PD004
05MG804	Shoal Lake at Shoal Lake	MI	8	WL	NA	Request
05ME010	Silver Creek near Binscarth	WSC	8	Q, WL	05ME010	05ME010
05LJ818	Singush Lake near Garland	MI	8	WL	NA	Request
05UD006	Sipiwesk Lake At Forestry Dock	MBH	12	WL	05UD006	05UD006
05UD007	Sipiwesk Lake At Sipiwesk Landing	MBH	12	WL	05UD007	05UD007
05OB016	Snowflake Creek Near Snowflake	WSC	12	Q, WL	05OB016	05OB016
05NF001	Souris River at Melita	WSC	8	Q, WL	05NF001	05NF001
05NG021	Souris River At Souris	WSC	8	Q, WL	05NG021	05NG021
05NG001	Souris River At Wawanesa	WSC	12	Q, WL	05NG001	05NG001
05NG807	Souris River near Napinka	MI	12	WL	NA	05NG807
05NF012	Souris River Near Westhope	WSC	12	Q, WL	05NF012	05NF012
06EC002	South Bay Diversion Channel At South Bay	WSC	12	Q, WL	06EC002	06EC002
05OF023	South Branch Of South Tobacco Creek Nr. Miami	WSC	8	Q, WL	05OF023	05OF023
05KK006	South Moose Lake at Moose Lake Control Structure	WSC	12	WL	05KK006	05KK006
05KK710	South Moose Lake at the Community	MBH	12	WL	05KK710	Request
05OF017	South Tobacco Creek Near Miami	WSC	8	Q, WL	05OF017	05OF017
06EC701	Southern Indian Lake above Narrows	MBH	12	WL	06EC701	Request
06EC006	Southern Indian Lake At Missi Falls	WSC	12	WL	06EC006	06EC006
06EC003	Southern Indian Lake At South Bay	WSC	12	WL	06EC003	06EC003
06EC007	Southern Indian Lake Near Opachuanau	WSC	12	WL	06EC007	06EC007
06EC001	Southern Indian Lake Near South Indian Lake	WSC	12	WL	06EC001	06EC001
05ME803	Spear Reservoir near Russell	MI	12	WL	NA	05ME803
05UF003	Split Lake At Split Lake	WSC	12	WL	05UF003	05UF003
05UF701	Split Lake at Split Lake Community	MBH	12	WL	05UF701	Request
05OE823	St. Malo Lake near St. Malo	MI	12	WL	NA	05OE823
05PG802	Star Lake near Outlet Control Structure	MI	12	WL	NA	05PG802
05LN811	Star Lake near Vogar	MI	8	WL	NA	Request
05OF008	Stephenfield Lake Near Stephenfield	MI	12	WL	05OF008	05OF008
05UF709	Stephens Lake in the Northwest Arm	MBH	12	WL	05UF709	Request
05NG019	Stony Creek near Broomhill	WSC	8	Q, WL	05NG019	05NG019
05MJ004	Sturgeon Creek At St. James	WSC	8	Q, WL	05MJ004	05MJ004
05MJ810	Sturgeon Creek near Meadows North of PR 221	MI	8	WL	NA	Request
05MJ812	Sturgeon Creek near Meadows on old PR 412	MI	8	WL	NA	Request
05LN810	Swan Lake near Lundar	MI	8	WL	NA	Request
05LE007	Swan Lake near Novra	MI	8	WL	NA	Request
05LE001	Swan River at Swan River	WSC	8	WL	05LE001	05LE001
05LE006	Swan River Near Minitonas	WSC	8	Q, WL	05LE006	05LE006
05SD803	Switzer Creek near Hodgson	MI	8	WL	NA	Request
05TG002	Taylor River Near Thompson	WSC	12	Q, WL	05TG002	05TG002
05TF703	Threepoint Lake near Nelson house	MBH	12	WL	05TF703	Request
05OF018	Tobacco Creek near Rosebank	WSC	8	Q, WL	05OF018	05OF018
05OE009	Tourond Creak near Tourond	WSC	8	Q, WL	05OE009	05OE009
05LJ007	Turtle River Near Laurier	WSC	8	Q, WL	05LJ007	05LJ007
05LJ812	Valley River above Gilbert Plains Dam	MI	8	WL	NA	05LJ812
05LJ010	Valley River Near Dauphin	WSC	8	Q, WL	05LJ010	05LJ010

Operating Party

MI - Manitoba Infrastructure
WSC - Water Survey Canada
MBH - Manitoba Hydro

Parameter

Q - Flow
WL - Water Level

Station Number	Station Name	Operating Party	Operating Period (months)	Parameter Measured	Real-time Data Access	Archived Data Access
05LJ046	Vermillion Reservoir near Dauphin	MI	12	WL	NA	Request
05LJ012	Vermillion River Near Dauphin	WSC	8	Q, WL	05LJ012	05LJ012
05LN815	Vestfold Pump #1 Cell #1	MI	8	WL	NA	Request
05LN819	Vestfold Pump #1 Cell #2	MI	8	WL	NA	Request
05LN816	Vestfold Pump #2	MI	8	WL	NA	Request
05LN817	Vestfold Pump #2 West of Road	MI	8	WL	NA	Request
05OD034	Vita Drain near Stuartburn	WSC	8	Q, WL	05OD034	05OD034
05UD704	Walker Lake near Walker River Outlet	MBH	12	WL	05UD704	Request
05TF701	Wapisu Lake below Notigi Control	MBH	12	WL	05TF701	Request
05LH005	Waterhen River Near Waterhen	WSC	12	Q, WL	05LH005	05LH005
05RE002	Weaver Lake At Outlet	WSC	12	WL	05RE002	05RE002
05UH002	Weir River Above The Mouth	WSC	12	Q, WL	05UH002	05UH002
05LF801	Wellman Lake near Miniotanas	MI	8	WL	NA	Request
05MD802	West Blue Lake at West Blue Lake	MI	12	WL	NA	05MD802
05MJ811	West Branch Sturgeon Creek near Warren	MI	8	WL	NA	Request
05PG803	West Hawk Lake at West Hawk Lake (Campground)	MI	12	WL	05PG803	05PG803
05LN808	West Shoal Lake	MI	8	WL	NA	Request
05PG811	White Lake at White Lake Campground	MI	12	WL	NA	05PG811
05PH003	Whitemouth River Near Whitemouth	WSC	12	Q, WL	05PH003	05PH003
05LL005	Whitemud River Near Keyes	WSC	8	Q, WL	05LL005	05LL005
05LL002	Whitemud River Near Westbourne	WSC	12	Q, WL	05LL002	05LL002
05PG812	Whiteshell River above White Lake Dam	MI	12	WL	NA	05PG812
05PG001	Whiteshell River At Outlet Of Jessica Lake	WSC	12	Q, WL	05PG001	05PG001
05NG023	Whitewater Lake Near Boissevain	WSC	8	WL	05NG023	05NG023
05LJ801	Wilson Creek near McCreary	MI	8	WL	05LJ801	Request
05LJ045	Wilson River Near Ashville	WSC	8	Q, WL	05LJ045	05LJ045
05PF062	Winnipeg River At Lac Du Bonnet	WSC	12	WL	05PF062	05PF062
05PF068	Winnipeg River at McArthur Generating Station	MBH	12	Q, WL	NA	05PF068
05PF069	Winnipeg River at Pine Falls Generating Station	MBH	12	Q, WL	NA	05PF069
05PF063	Winnipeg River at Slave Falls	MBH	12	Q, WL	NA	05PF063
05PF057	Winnipeg River Head Water Seven Sisters Power Plan	MBH	12	WL	NA	05PF057
05PF048	Winnipeg River Tailrace Great Falls Power Plant	MBH	12	WL	NA	05PF048
05LE004	Woody River near Bowsman	WSC	8	Q, WL	05LE004	05LE004
05TF780	Wuskwatim Construction Forebay #1	MBH	12	WL	05TF780	Request
05TF781	Wuskwatim Construction Forebay #2	MBH	12	WL	05TF781	Request
05TF775	Wuskwatim Lake #1 - Southeast Shore	MBH	12	WL	05TF775	Request
05TF774	Wuskwatim Lake #2 - Northeast Shore	MBH	12	WL	05TF774	Request
05TF772	Wuskwatim Lake #4 - Lake Entrance	MBH	12	WL	05TF772	Request
05TF771	Wuskwatim Lake #5 - Southwest Shore	MBH	12	WL	05TF771	Request
05TF006	Wuskwatim Lake Near Thompson	MBH	12	WL	05TF006	05TF006

Operating Party

MI - Manitoba Infrastructure

WSC - Water Survey Canada

MBH - Manitoba Hydro

Parameter

Q - Flow

WL - Water Level