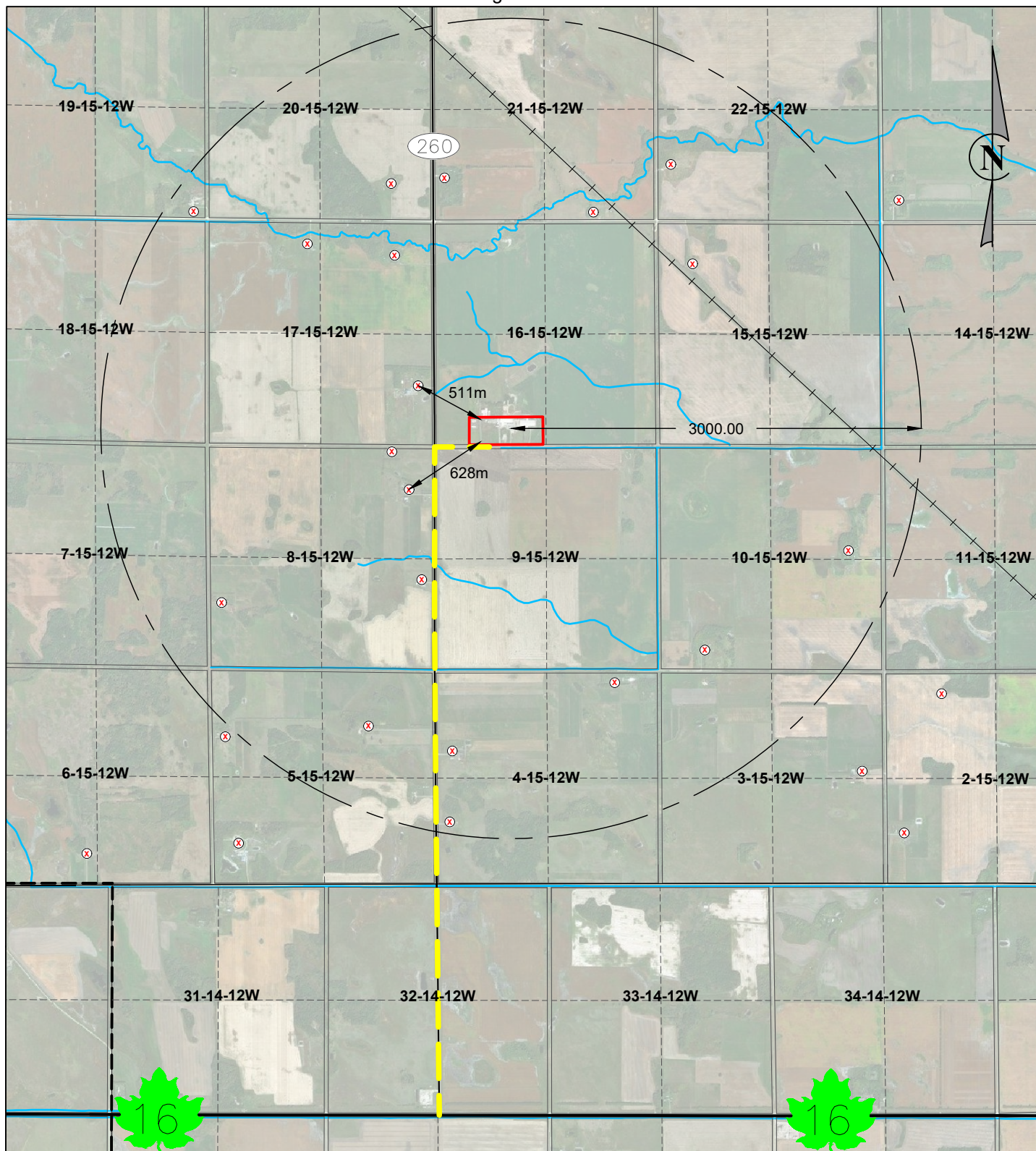


Rge. 12W.

Twp. 14



LEGEND




- DWELLING UNIT
- TRUCK HAUL ROUTE
- SUBJECT SITE

- PUBLIC CONDITIONAL USE HEARING
- PROVINCIAL ROAD
- GOVERNMENT ROAD ALLOWANCE
- RAILWAYS

DESIGNED BY: -	REVIEWED BY: KD
DRAWN BY: EM	
PROJECT START DATE APRIL - 2021	
PLOT SIZE: 8 1/2 x 11	
SCALE: N.T.S.	

PROJECT NAME:
**HAPPY ROCK HOLSTEINS
CONDITIONAL USE APPLICATION
MUNICIPALITY OF WESTLAKE-GLADSTONE**



**BURNS MAENDEL
CONSULTING ENGINEERS LTD.**

903 Rosser Ave.
Brandon, Manitoba
R7A 0L3
Tel: (204) 728-7364
Fax: (204) 728-4418

DRAWING TITLE: LAND USE MAP	
PROJECT NUMBER: BMCE-21-060	DRAWING NO: SK-2

NO.	DATE	BY	DESCRIPTION
REVISIONS			