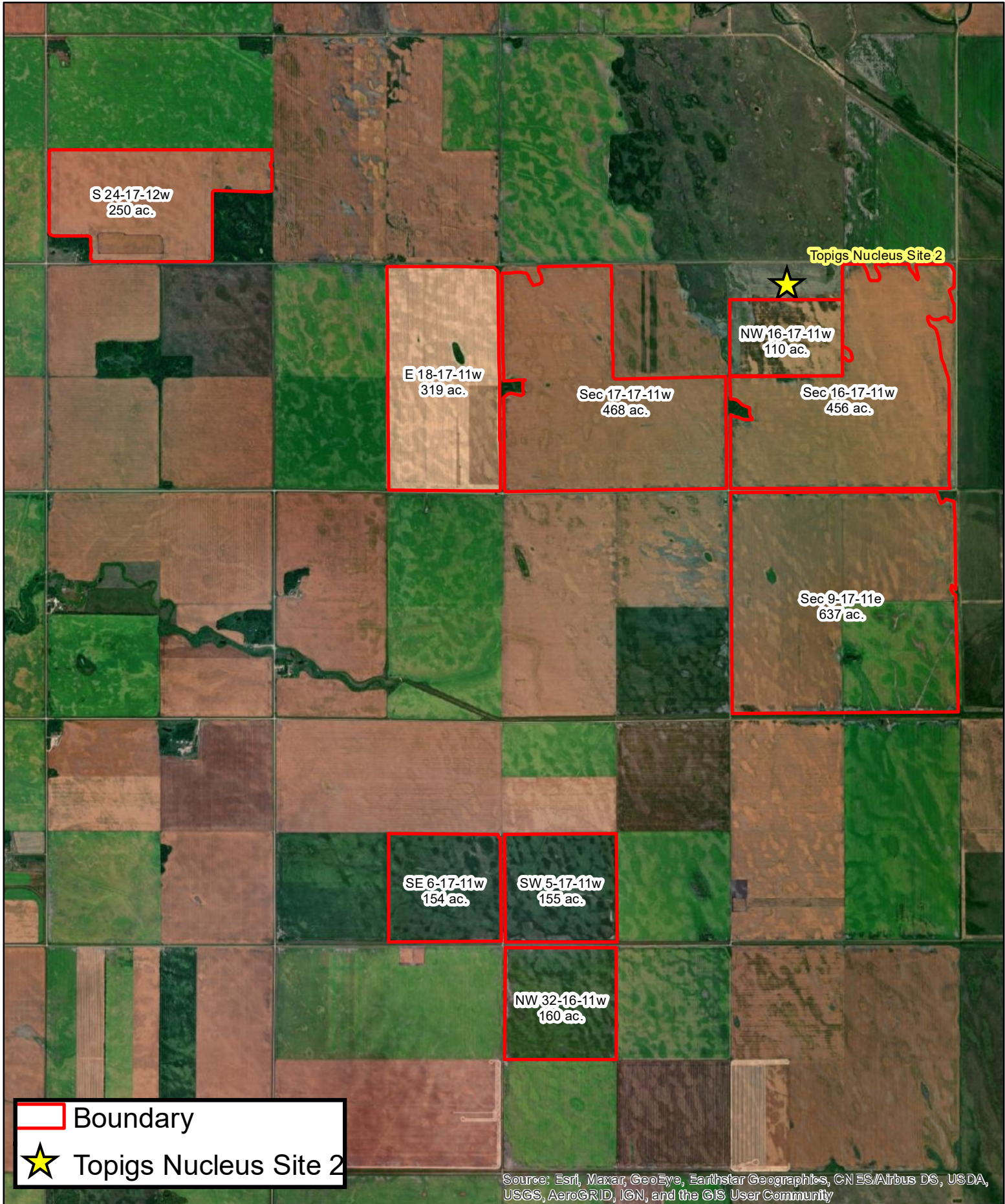




Topigs Norsvin Nucleus Site 2; Spread Fields Map



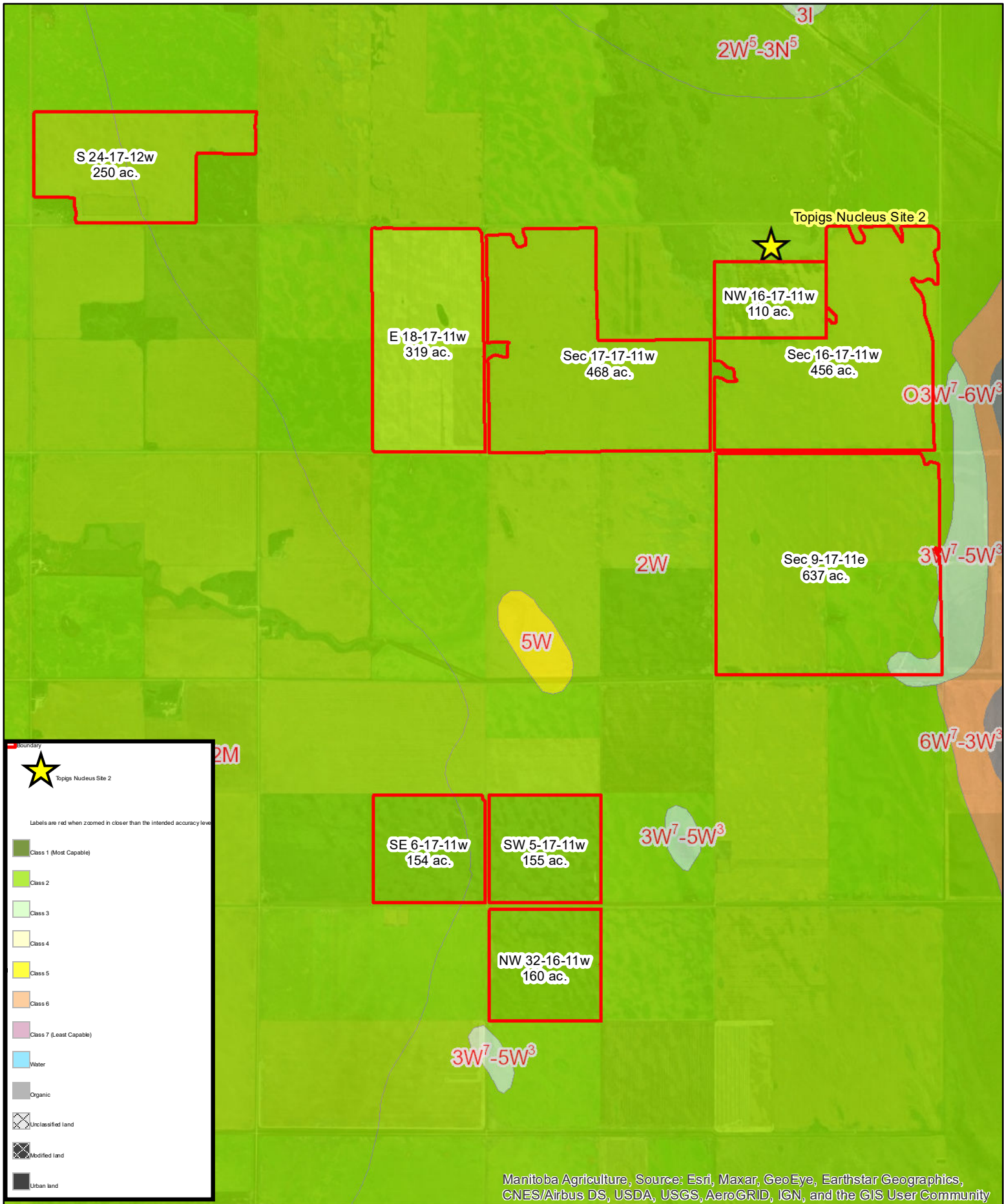
 Boundary

 Topigs Nucleus Site 2

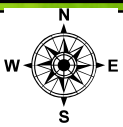
Source: Esri, Maxar, GeoEye, Earthstar Geographics, CNES/Airbus DS, USDA, USGS, AeroGRID, IGN, and the GIS User Community



Topigs Norsvin Nucleus Site 2; MB Soils Map



Manitoba Agriculture, Source: Esri, Maxar, GeoEye, Earthstar Geographics, CNES/Airbus DS, USDA, USGS, AeroGRID, IGN, and the GIS User Community



Topigs Norsvin Nucleus Site 2; MB Drains Map

