

MUNICIPALITY OF SOURIS-GLENWOOD

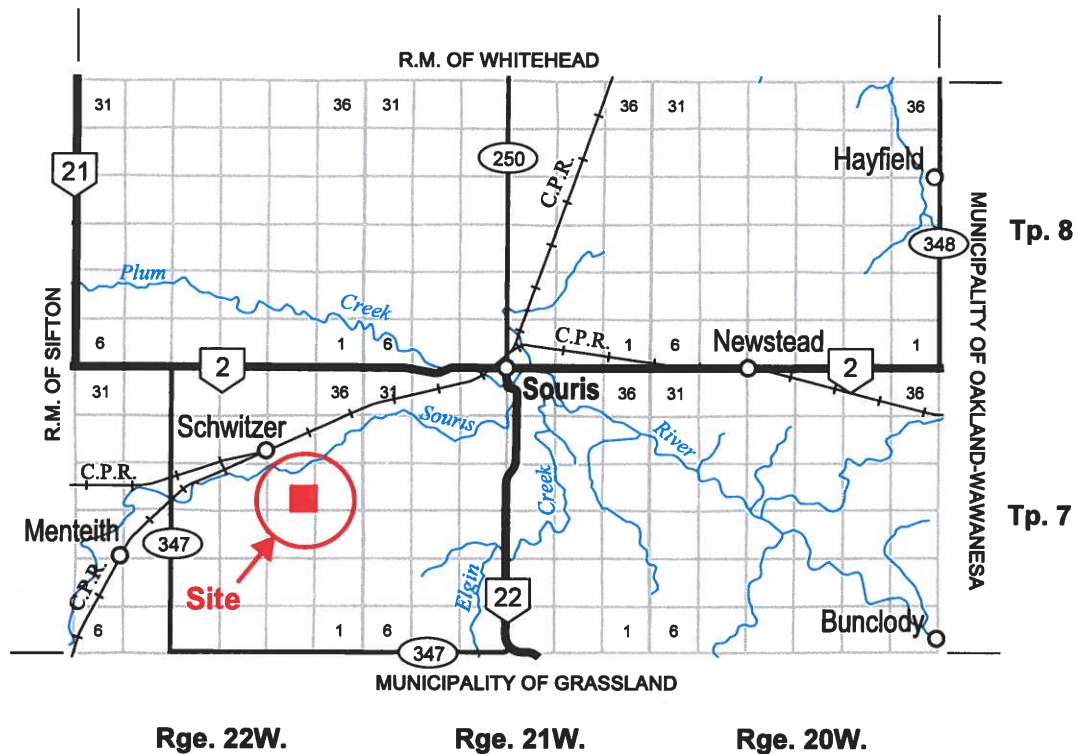


0 5
SCALE IN KILOMETRES

PROVINCE OF MANITOBA
INFRASTRUCTURE
HIGHWAY PLANNING AND DESIGN BRANCH
GEOGRAPHIC & RECORDS MANAGEMENT SECTION
WINNIPEG
JANUARY 1, 2015

LEGEND

- PROVINCIAL TRUNK HIGHWAYS
- PROVINCIAL ROADS
- RAILWAYS



Hogs is Beautiful
SE 23-7-22W
RM of Souris-Glenwood

FORMERLY RM OF GLENWOOD

Animal Units Calculator

A	B	C	Current Operation		Proposed Operation	
			D	E	F	G
Operation Type	Animal Categories	Animal Units per Head	Current Number of Animals ¹	Current Animal Units	Proposed Number of Animals ²	Proposed Number of Animal Units
Dairy ³	Mature cows (lactating and dry) including associated livestock	2		-		-
	Mature cows (lactating and dry)	1.35		-		-
	Heifers (0 to 3 months)	0.16		-		-
	Heifers (4 to 13 months)	0.41		-		-
	Heifers (> 13 months)	0.87		-		-
	Bulls	1.35		-		-
Beef	Veal calves	0.13		-		-
	Beef cows including associated livestock	1.25		-		-
	Backgrounder	0.5		-		-
	Summer pasture / replacement heifers	0.625		-		-
Pigs	Feeder cattle	0.769		-		-
	Sows - farrow to finish (234-254 lbs)	1.25		-		-
	Sows - farrow to weanling (up to 11 lbs)	0.25	1,600	400	2,700	675
	Sows - farrow to nursery (51 lbs)	0.313		-		-
	Boars (artificial insemination units)	0.2		-		-
	Weanlings, Nursery (11-51 lbs)	0.033		-		-
	Growers / Finishers (51-249 lbs)	0.143		-		-
Chickens	Broilers	0.005		-		-
	Roasters	0.01		-		-
	Layers	0.0083		-		-
	Pullets	0.0033		-		-
	Broiler breeder pullets	0.0033		-		-
	Broiler breeder hens	0.01		-		-
Turkeys	Broilers	0.01		-		-
	Heavy Toms	0.02		-		-
	Heavy Hens	0.01		-		-
Horses	Mares	1.333		-		-
Sheep	Ewes	0.2		-		-
	Feeder lambs	0.063		-		-
Other Livestock	Type:			-		-
	Type:			-		-
Total Current:				400	Total Proposed:	675

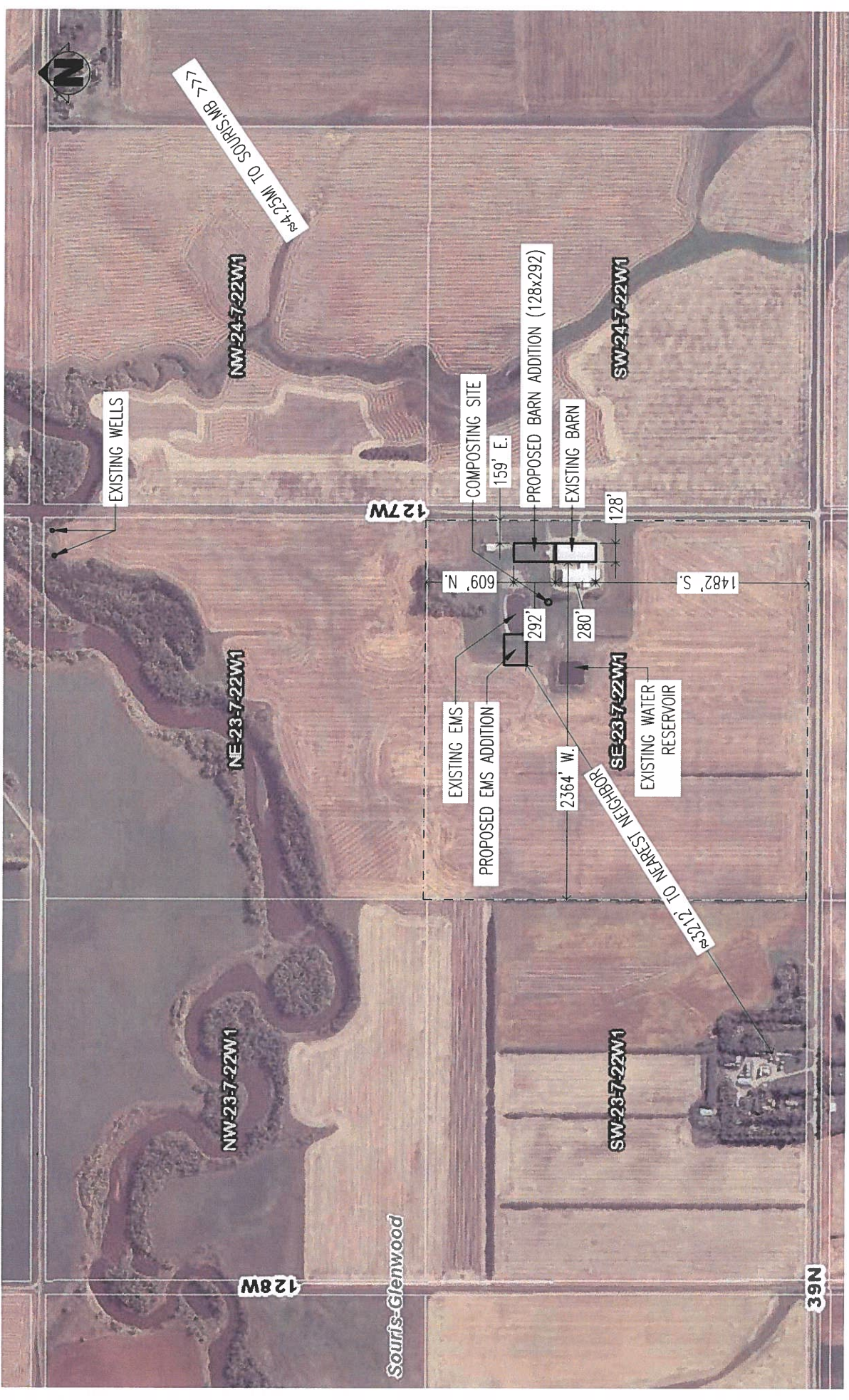
Footnotes:

¹ Enter the current number of animals on the farm based on the operation's capacity (animal places) or previous Conditional Use Approval.

² Enter the total number of animals associated with the operation post construction or expansion.

³ There are 2 methods for calculating animal units for dairy (Farm Practices Guidelines for Dairy Producers in Manitoba, 1995). You can enter the total number of mature cows in the milking herd under the "Mature cows (lactating and dry) including associated livestock" category and the animal units will be calculated by multiplying this number by 2. This calculation assumes 85 lactating, 15 dry, 12 heifers (0 to 3 months), 36 heifers (4 to 13 months) and 50 heifers (> 13 months) for an operation with 100 mature cows. "Associated livestock" includes all of the heifer calves and replacement heifers. Alternatively, you can enter animal numbers in the individual categories (mature cows, heifers (0 to 3 months), heifers (4 to 13 months) and heifers (> 13 months)) and they will be summed at the bottom of the table. Bulls and veal calves are always calculated separately.

For all other livestock or operation types please inquire with [Manitoba Agriculture and Resource Development](#)



PROJECT NAME	HOGS IS BEAUTIFUL	BUILDING AREA	N/A
SHEET TITLE	SITE PLAN	DRAWN BY	R. FLORES SOUTH-MAN ENGINEERING
DATE DRAWN	AUGUST 2020	DRAWING SCALE	SCALED TO FIT
		SHEET NUMBER	SP-1



South-Man Engineering

685 Lapreche Blvd | Winnipeg, Manitoba | R2J 3K4
 PH: (204) 646-9652 | FAX: (204) 646-2524

Water Requirement Calculation Table

Livestock	Number	IG/day per animal in winter	IG/day per animal in summer	IG/day (Imperial gallons per day)
Beef/Dairy/Bison *				
Feeder/heifer/steer (600 lb.)		5	9	-
Feeder (900 lb.)		7	12	-
Feeder (1250 lb.)		10	15	-
Cow/calf pair		12	15	-
Dry milking cow **		10	12	-
Lactating cow **		25	30	-
Bison		8	10	-
Horses				
Horses		8	11	-
Hogs				
Sow (Farrow/wean)	2,700	5.5		14,850
Dry Sow/Boar		4		-
Feeder		2		-
Nursery (33 lb.)		1		-
Chickens				
Broilers		0.035		-
Roasters/Pullets		0.04		-
Layers		0.055		-
Breeders		0.07		-
Turkeys				
Turkey Growers		0.13		-
Turkey Heavies		0.16		-
Sheep/Goats				
Sheep/Goats		2		-
Ewes/Does		3		-
Lambs/Kids (90 lb.)		1.6		-
TOTAL (IG/day)				14,850
TOTAL with 10% wash water				16,335

* For beef, dairy, bison and horse enterprises:
Use summer numbers if appropriate for the operation. Otherwise base projections on winter values.
Always use the greater of the two values.

** For intensive Dairy operations, please use the Dairy Barn Water Requirement Calculator found on separate sheet.

*** 10% of the total is added to allow for wash water

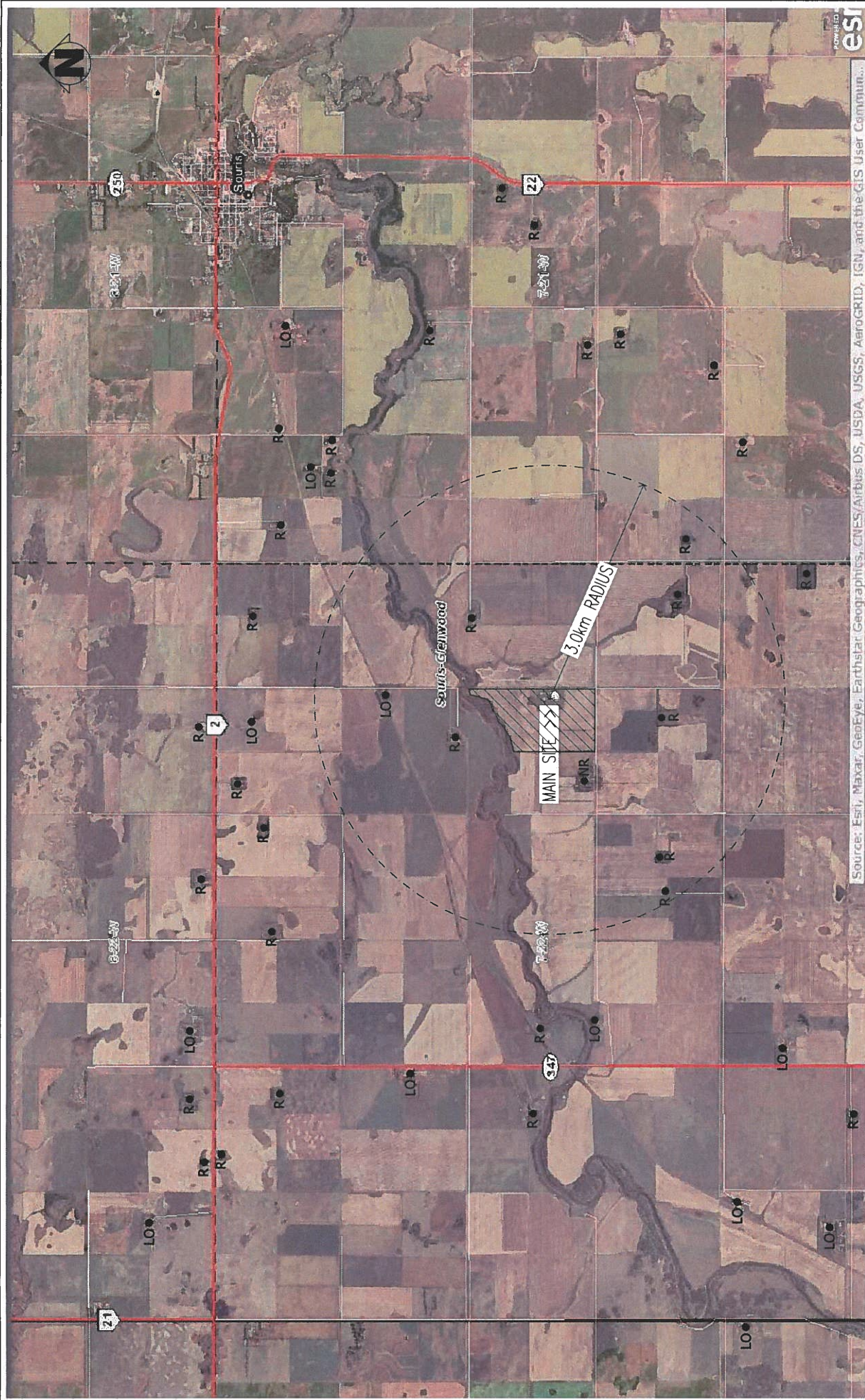
Other consumption:

Normal household consumption:
60-75 IG/day per person or
(272-340 l/day/person)

Unit Conversions		
Total per day	Total per year	Unit
16,335	5,962,275	IG
67,508	24,640,457	litres
0.068	25	cubic decametres (dam ³)




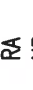


Conversion Factor: 1 IGPM = 4.546 l/m

Please note that the Water Requirement Calculator is an estimation only.



Source: Esri, Maxar, GeoEye, Earthstar, Geographics, CNES/Airbus DS, USDA, USGS, AeroGRID, IGN, and the GIS User Community... **esri**

LEGEND:

-  PROJECT SITE
-  RESIDENCE
-  LIVESTOCK OPERATIONS
-  RESIDENTIAL AREA
-  NEAREST NEIGHBOR (APPROX. 3,212 FT)
-  3km NOTIFICATION AREA FOR THE PUBLIC CONDITIONAL USE HEARING

PROJECT NAME	HOGS IS BEAUTIFUL
BUILDING AREA	N/A
SHEET TITLE	LAND USE MAP
DRAWN BY	R. FLORES SOUTH-MAN ENGINEERING
DATE DRAWN	AUGUST 2020
DRAWING SCALE	SCALED TO FIT
SHEET NUMBER	SP-2A



South-Man Engineering

4-851 Leominster Blvd. | Winnipeg, Manitoba | R2J 3K4
 PH: (204) 268-8825 | FAX: (204) 268-7204

THIS DRAWING IS THE PROPERTY OF SOUTH-MAN ENGINEERING, WINNIPEG, MANITOBA, CANADA.

Select Year Range



2009 to 2019

SEARCH

Search Summary

255 records returned

922 farm varieties grown on 302,439.0 acres

Average Yield

0.895 Tonnes (39.5 Bushels) per acre

Showing 1 to 50 of 255 entries

Year	Risk Area / R.M.	Crop	Variety	Farms	Acres	Yield/acre (Metric)	Yield/acre (Imperial)
2017	SOURIS-GLENWOOD	ARGENTINE CANOLA	L233P (BASF) 5CN0130 (LT){PSR-R}	3	1,177.0	1.446 Tonnes	63.7 Bushels
2016	SOURIS-GLENWOOD	ARGENTINE CANOLA	L140P (INVIGOR) (LT){PSR-R}	5	1,585.0	1.251 Tonnes	55.2 Bushels
2018	SOURIS-GLENWOOD	ARGENTINE CANOLA	L255PC (INVIGOR) 6CN0122 (LT) {PSR-R}	3	1,522.0	1.228 Tonnes	54.2 Bushels
2016	SOURIS-GLENWOOD	ARGENTINE CANOLA	5440 (INVIGOR) PHS04-690 (LT)	4	1,583.0	1.178 Tonnes	51.9 Bushels
2009	SOURIS-GLENWOOD	ARGENTINE CANOLA	9590 (INVIGOR) (LT)	3	600.0	1.143 Tonnes	50.4 Bushels
2018	SOURIS-GLENWOOD	ARGENTINE CANOLA	L233P (BASF) 5CN0130 (LT){PSR-R}	16	8,115.0	1.141 Tonnes	50.3 Bushels
2015	SOURIS-GLENWOOD	ARGENTINE CANOLA	L140P (INVIGOR) (LT){PSR-R}	4	657.0	1.129 Tonnes	49.8 Bushels
2018	SOURIS-GLENWOOD	ARGENTINE CANOLA	L230 (BAYER) 5CN0125 (LT)	6	1,744.0	1.122 Tonnes	49.5 Bushels
2015	SOURIS-GLENWOOD	ARGENTINE CANOLA	L261 (INVIGOR) (LT)	4	1,456.0	1.115 Tonnes	49.2 Bushels
2017	SOURIS-GLENWOOD	ARGENTINE CANOLA	L140P (INVIGOR) (LT){PSR-R}	9	3,772.0	1.098 Tonnes	48.4 Bushels
2017	SOURIS-GLENWOOD	ARGENTINE CANOLA	L230 (BAYER) 5CN0125 (LT)	6	1,367.0	1.097 Tonnes	48.4 Bushels
2017	SOURIS-GLENWOOD	ARGENTINE CANOLA	2020 CL (NEXERA) (ST)	3	1,259.0	1.095 Tonnes	48.3 Bushels
2009	SOURIS-GLENWOOD	ARGENTINE CANOLA	5440 (INVIGOR) PHS04-690 (LT)	18	8,503.0	1.089 Tonnes	48.0 Bushels
2019	SOURIS-GLENWOOD	ARGENTINE CANOLA	P501L (PIONEER) (LT)	4	571.0	1.080 Tonnes	47.6 Bushels
2017	SOURIS-GLENWOOD	ARGENTINE CANOLA	L252 (INVIGOR) (LT)	30	13,680.0	1.075 Tonnes	47.4 Bushels
2009	SOURIS-GLENWOOD	ARGENTINE CANOLA	8440 (INVIGOR) PHS04-781 (LT)	16	7,332.0	1.070 Tonnes	47.2 Bushels
2013	SOURIS-GLENWOOD	ARGENTINE CANOLA	L154 (INVIGOR) (LT)	3	750.0	1.066 Tonnes	47.0 Bushels
2016	SOURIS-GLENWOOD	ARGENTINE CANOLA	L252 (INVIGOR) (LT)	27	12,325.0	1.049 Tonnes	46.3 Bushels
2015	SOURIS-GLENWOOD	ARGENTINE CANOLA	L252 (INVIGOR) (LT)	14	3,817.0	1.048 Tonnes	46.2 Bushels
2019	SOURIS-GLENWOOD	ARGENTINE CANOLA	L233P (BASF) 5CN0130 (LT){PSR-R}	30	13,064.0	1.045 Tonnes	46.1 Bushels
2016	SOURIS-GLENWOOD	ARGENTINE CANOLA	45H31 (PIONEER) (RT)	3	1,093.0	1.032 Tonnes	45.5 Bushels
2013	SOURIS-GLENWOOD	ARGENTINE CANOLA	5440 (INVIGOR) PHS04-690 (LT)	19	4,295.0	1.022 Tonnes	45.1 Bushels

Select Year Range



2009 to 2019

SEARCH

Search Summary

63 records returned

217 farm varieties grown on 35,715.0 acres

Average Yield

1.482 Tonnes (96.1 Bushels) per acre

Showing 1 to 50 of 63 entries

First Previous Next Last

Year	Risk Area / R.M.	Crop	Variety	Farms	Acres	Yield/acre (Metric)	Yield/acre (Imperial)
2013	SOURIS-GLENWOOD	OATS	SOURIS	6	665.0	2.007 Tonnes	130.1 Bushels
2016	SOURIS-GLENWOOD	OATS	SUMMIT (OT 2046)	9	1,713.0	1.847 Tonnes	119.8 Bushels
2017	SOURIS-GLENWOOD	OATS	SUMMIT (OT 2046)	8	1,268.0	1.829 Tonnes	118.6 Bushels
2015	SOURIS-GLENWOOD	OATS	PINNACLE	5	1,235.0	1.765 Tonnes	114.4 Bushels
2009	SOURIS-GLENWOOD	OATS	HIFI	4	608.0	1.752 Tonnes	113.6 Bushels
2019	SOURIS-GLENWOOD	OATS	CS CAMDEN	4	1,013.0	1.752 Tonnes	113.6 Bushels
2017	SOURIS-GLENWOOD	OATS	SOURIS	4	520.0	1.712 Tonnes	111.0 Bushels
2016	SOURIS-GLENWOOD	OATS	SOURIS	7	1,009.0	1.629 Tonnes	105.6 Bushels
2019	SOURIS-GLENWOOD	OATS	SUMMIT (OT 2046)	8	1,486.0	1.616 Tonnes	104.8 Bushels
2009	SOURIS-GLENWOOD	OATS	PINNACLE	9	1,781.0	1.597 Tonnes	103.6 Bushels
2010	SOURIS-GLENWOOD	OATS	LEGGETT (OT2021)	7	1,277.0	1.571 Tonnes	101.8 Bushels
2012	SOURIS-GLENWOOD	OATS	PINNACLE	8	3,699.0	1.543 Tonnes	100.1 Bushels
2014	SOURIS-GLENWOOD	OATS	SUMMIT (OT 2046)	6	830.0	1.439 Tonnes	93.3 Bushels
2012	SOURIS-GLENWOOD	OATS	LEGGETT (OT2021)	4	589.0	1.437 Tonnes	93.2 Bushels
2013	SOURIS-GLENWOOD	OATS	LEGGETT (OT2021)	3	568.0	1.375 Tonnes	89.2 Bushels
2018	SOURIS-GLENWOOD	OATS	SUMMIT (OT 2046)	4	1,056.0	1.369 Tonnes	88.8 Bushels
2015	SOURIS-GLENWOOD	OATS	SOURIS	6	1,072.0	1.355 Tonnes	87.8 Bushels
2011	SOURIS-GLENWOOD	OATS	PINNACLE	4	2,500.0	1.348 Tonnes	87.4 Bushels
2015	SOURIS-GLENWOOD	OATS	SUMMIT (OT 2046)	12	1,447.0	1.340 Tonnes	86.9 Bushels
2014	SOURIS-GLENWOOD	OATS	SOURIS	3	666.0	1.289 Tonnes	83.6 Bushels
2012	SOURIS-GLENWOOD	OATS	SOURIS	4	518.0	1.276 Tonnes	82.7 Bushels
2009	SOURIS-GLENWOOD	OATS	LEGGETT (OT2021)	6	770.0	1.265 Tonnes	82.0 Bushels

Select Year Range



2009 to 2019

SEARCH

Search Summary

137 records returned

335 farm varieties grown on 101,894.0 acres

Average Yield

0.996 Tonnes (36.6 Bushels) per acre

Showing 1 to 50 of 137 entries

Year	Risk Area / R.M.	Crop	Variety	Farms	Acres	Yield/acre (Metric)	Yield/acre (Imperial)
2016	SOURIS-GLENWOOD	SOYBEANS	P006T78R (PIONEER) (RT)	3	1,074.0	1.479 Tonnes	54.4 Bushels
2016	SOURIS-GLENWOOD	SOYBEANS	NSC RESTON RR2Y (NSGENETICS) (RT)	6	2,573.0	1.321 Tonnes	48.5 Bushels
2016	SOURIS-GLENWOOD	SOYBEANS	23-60RY (DEKALB) (RT)	4	830.0	1.308 Tonnes	48.0 Bushels
2017	SOURIS-GLENWOOD	SOYBEANS	P006T78R (PIONEER) (RT)	4	1,749.0	1.227 Tonnes	45.1 Bushels
2017	SOURIS-GLENWOOD	SOYBEANS	S007-Y4 RR2Y (SYNGENTA) (RT)	10	4,987.0	1.189 Tonnes	43.7 Bushels
2016	SOURIS-GLENWOOD	SOYBEANS	S007-Y4 RR2Y (SYNGENTA) (RT)	6	1,980.0	1.185 Tonnes	43.5 Bushels
2017	SOURIS-GLENWOOD	SOYBEANS	23-60RY (DEKALB) (RT)	8	2,349.0	1.142 Tonnes	42.0 Bushels
2016	SOURIS-GLENWOOD	SOYBEANS	AKRAS R2 (BRETT YOUNG) (RT)	6	1,497.0	1.141 Tonnes	41.9 Bushels
2016	SOURIS-GLENWOOD	SOYBEANS	22-60RY (DEKALB) (RT)	4	1,285.0	1.104 Tonnes	40.6 Bushels
2016	SOURIS-GLENWOOD	SOYBEANS	NSC WATSON RR2Y (NSGENETICS) (RT)	4	791.0	1.101 Tonnes	40.5 Bushels
2017	SOURIS-GLENWOOD	SOYBEANS	TH 33003R2Y (THUNDER) (RT)	4	1,531.0	1.100 Tonnes	40.4 Bushels
2013	SOURIS-GLENWOOD	SOYBEANS	23-10RY (DEKALB) (RT)	6	1,602.0	1.096 Tonnes	40.3 Bushels
2014	SOURIS-GLENWOOD	SOYBEANS	PEKKO R2 (BRETT YOUNG) JA1025926 (RT)	3	533.0	1.097 Tonnes	40.3 Bushels
2017	SOURIS-GLENWOOD	SOYBEANS	NSC RESTON RR2Y (NSGENETICS) (RT)	4	1,740.0	1.091 Tonnes	40.1 Bushels
2019	SOURIS-GLENWOOD	SOYBEANS	S007-Y4 RR2Y (SYNGENTA) (RT)	9	4,116.0	1.077 Tonnes	39.6 Bushels
2012	SOURIS-GLENWOOD	SOYBEANS	LS 004R21 (LEGEND)(RT)	3	550.0	1.056 Tonnes	38.8 Bushels
2017	SOURIS-GLENWOOD	SOYBEANS	AKRAS R2 (BRETT YOUNG) (RT)	5	1,205.0	1.043 Tonnes	38.3 Bushels
2017	SOURIS-GLENWOOD	SOYBEANS	22-60RY (DEKALB) (RT)	3	666.0	1.026 Tonnes	37.7 Bushels
2015	SOURIS-GLENWOOD	SOYBEANS	23-60RY (DEKALB) (RT)	5	1,095.0	1.009 Tonnes	37.1 Bushels
2016	SOURIS-GLENWOOD	SOYBEANS	TH 33003R2Y (THUNDER) (RT)	3	1,501.0	0.994 Tonnes	36.5 Bushels
2015	SOURIS-GLENWOOD	SOYBEANS	NSC TILSTON RR2Y (NSGENETICS) (RT)	4	986.0	0.975 Tonnes	35.8 Bushels
2019	SOURIS-GLENWOOD	SOYBEANS	DKB003-29 (DEKALB) (RR2X)	3	1,548.0	0.974 Tonnes	35.8 Bushels

Select Year Range



2009 to 2019

SEARCH

Search Summary

117 records returned

603 farm varieties grown on 225,398.0 acres

Average Yield

1.413 Tonnes (51.9 Bushels) per acre

Showing 1 to 50 of 117 entries

Year	Risk Area / R.M.	Crop	Variety	Farms	Acres	Yield/acre (Metric)	Yield/acre (Imperial)
2013	SOURIS-GLENWOOD	RED SPRING WHEAT	MUCHMORE (BW875)	13	6,252.0	2.041 Tonnes	75.0 Bushels
2018	SOURIS-GLENWOOD	RED SPRING WHEAT	AAC VIEWFIELD (FP GENETICS) BW965 EXP	9	3,868.0	1.906 Tonnes	70.0 Bushels
2017	SOURIS-GLENWOOD	RED SPRING WHEAT	MUCHMORE (BW875)	9	2,595.0	1.863 Tonnes	68.4 Bushels
2017	SOURIS-GLENWOOD	RED SPRING WHEAT	AAC BRANDON (BW 932)	29	11,257.0	1.790 Tonnes	65.8 Bushels
2013	SOURIS-GLENWOOD	RED SPRING WHEAT	HARVEST (BW259)	14	4,827.0	1.749 Tonnes	64.3 Bushels
2013	SOURIS-GLENWOOD	RED SPRING WHEAT	WR859 CL (BW859)	4	1,217.0	1.705 Tonnes	62.7 Bushels
2009	SOURIS-GLENWOOD	RED SPRING WHEAT	HARVEST (BW259)	17	5,270.0	1.690 Tonnes	62.1 Bushels
2015	SOURIS-GLENWOOD	RED SPRING WHEAT	HARVEST (BW259)	6	2,231.0	1.611 Tonnes	59.2 Bushels
2013	SOURIS-GLENWOOD	RED SPRING WHEAT	CARBERRY (BW874)	6	1,927.0	1.582 Tonnes	58.1 Bushels
2013	SOURIS-GLENWOOD	RED SPRING WHEAT	CDC STANLEY (BW880)	11	3,067.0	1.575 Tonnes	57.9 Bushels
2014	SOURIS-GLENWOOD	RED SPRING WHEAT	HARVEST (BW259)	6	1,844.0	1.541 Tonnes	56.6 Bushels
2009	SOURIS-GLENWOOD	RED SPRING WHEAT	SUPERB (BW252)	3	792.0	1.526 Tonnes	56.1 Bushels
2019	SOURIS-GLENWOOD	RED SPRING WHEAT	AAC BRANDON (BW 932)	29	15,961.0	1.524 Tonnes	56.0 Bushels
2018	SOURIS-GLENWOOD	RED SPRING WHEAT	AAC BRANDON (BW 932)	37	16,727.0	1.520 Tonnes	55.9 Bushels
2013	SOURIS-GLENWOOD	RED SPRING WHEAT	CDC GO (BW781)	3	588.0	1.513 Tonnes	55.6 Bushels
2017	SOURIS-GLENWOOD	RED SPRING WHEAT	5605HR CL (BW918)	4	1,374.0	1.472 Tonnes	54.1 Bushels
2016	SOURIS-GLENWOOD	RED SPRING WHEAT	CARDALE (BW429)	4	990.0	1.469 Tonnes	54.0 Bushels
2015	SOURIS-GLENWOOD	RED SPRING WHEAT	WR859 CL (BW859)	4	727.0	1.468 Tonnes	53.9 Bushels
2012	SOURIS-GLENWOOD	RED SPRING WHEAT	MUCHMORE (BW875)	6	1,888.0	1.464 Tonnes	53.8 Bushels
2015	SOURIS-GLENWOOD	RED SPRING WHEAT	MUCHMORE (BW875)	18	7,610.0	1.460 Tonnes	53.7 Bushels
2009	SOURIS-GLENWOOD	RED SPRING WHEAT	AC CORA (BW 152)	6	1,133.0	1.446 Tonnes	53.1 Bushels
2009	SOURIS-GLENWOOD	RED SPRING WHEAT	AC BARRIE (BW 661)	15	6,086.0	1.432 Tonnes	52.6 Bushels

1a - Pigs

Operation Name:

Hogs Is Beautiful

Operation Type	Storage Type	Volatilization	Animal Numbers (Places)	N Excreted Per Herd Adjusted for Storage N Loss (lb/yr/herd)	P2O5 Excreted Per Herd Per Year (lb/yr/herd)
Gilts (Purchased)	Liquid Uncovered Earthen	30%		0	0
Boars	Liquid Uncovered Earthen	30%		0	0
Weanlings/Nursery	Liquid Uncovered Earthen	30%		0	0
Growers/Finishers	Liquid Uncovered Earthen	30%		0	0
Sows, farrow to 6.2 kg	Liquid Uncovered Earthen	30%	2700	101376	73215
Sows, farrow to 28 kg	Liquid Uncovered Earthen	30%		0	0
Sows, farrow to finish	Liquid Uncovered Earthen	30%		0	0

Last Revised February 12, 2020

2 - Crop Rotation
Operation Name:

Hogs Is Beautiful

Crop	Removal		Uptake		Yield	Units	Acreage	Removal		Uptake	
	P205 (lb)	N (lb)	P205 (lb)	N (lb)				P205 (lb)	N (lb)	P205 (lb)	N (lb)
Alfalfa	13.8	58	58	lb/ton		ton/ac		-	-	-	-
Barley Grain	0.42	0.97	1.39	lb/bu		bu/ac		-	-	-	-
Barley Silage	11.8	34.4	34.4	lb/ton		ton/ac		-	-	-	-
Canola	1.04	1.93	3.19	lb/bu	39.5	bu/ac	313	12858	23862		39440
Corn Grain	0.44	0.97	1.53	lb/bu		bu/ac		-	-	-	-
Corn Silage	12.7	31.2	31.2	lb/ton		tons/ac		-	-	-	-
Dry Edible Beans	1.39	4.17		lb/cwt		cwt/ac		-	-	-	-
Fababeans	1.79	5.02	8.4	lb/cwt		cwt/ac		-	-	-	-
Flax	0.65	2.13	2.88	lb/bu		bu/ac		-	-	-	-
Grass Hay	10	34.2	34.2	lb/ton		tons/ac		-	-	-	-
Lentils	1.03	3.39	5.08	lb/cwt		cwt/ac		-	-	-	-
Oats	0.26	0.62	1.07	lb/bu	96.1	bu/ac	313	7821	18649		32185
Pasture (grazed)	10	34.2	34.2	lb/ton	0.5	ton/ac		-	-	-	-
Peas	0.69	2.34	3.06	lb/bu		bu/ac		-	-	-	-
Potatoes	0.09	0.32	0.57	lb/cwt		cwt/ac		-	-	-	-
Rye	0.45	1.06	1.67	lb/bu		bu/ac		-	-	-	-
Soybeans	0.84	3.87	5.2	lb/bu	36.6	bu/ac	240	7379	33994		45677
Sunflower	1.1	2.8		lb/cwt		cwt/ac		-	-	-	-
Wheat - Spring	0.59	1.5	2.11	lb/bu	51.9	bu/ac	626	19169	48734		68553
Wheat - Winter	0.51	1.04	1.35	lb/bu		bu/ac		-	-	-	-
Total Acres							1492	47226	125239	185854	124.6
Estimated Average Removal/Uptake (lb/ac)								31.7	83.9	124.6	
Acres in Hanover and La Broquerie											
Proportion in Hanover or La Broquerie											
Additional Acres											
Crop Planned on Additional Acres											
Total Acreage							1492				

***Notes:** Enter the number of acres that are in the RM's of Hanover or La Broquerie in cell H26. Additional acres include acres for which crop removal or soil data is limited or unavailable.

3 - Farm Excretion

Operation Name: Hogs Is Beautiful

Species	Animal Category/Operation type	N (lb/year)	P2O5 (lb/year)
Pigs	Boars	0	0
	Weanlings/Nursery	0	0
	Growers/Finishers	0	0
	Sows, farrow to 5 kg	101376	73215
	Sows, farrow to 23 kg	0	0
	Sows, farrow to finish	0	0
Beef	Mature Cows and Bred Heifers, plus associated livestock	0	0
	Feedlot Cattle - long keep	0	0
	Feedlot Cattle - short keep	0	0
	Backgrounders - pasture	0	0
	Backgrounders - confined	0	0
Dairy	Lactating cow	0	0
	Lactating First Calf Heifer	0	0
	Dry cow	0	0
	Calf, 0-3 months	0	0
	Calf, 4-13 months	0	0
	Replacements, >13 months	0	0
	Mature Cows, plus assoc livestock	0	0
Sheep	Ewes	0	0
	Replacement Ewes	0	0
	Rams	0	0
	Lambs	0	0
	Ewes, plus assoc livestock	0	0
	Feeder	0	0
Chickens	Light Broilers	0	0
	Broilers	0	0
	Broiler Breeder Pullets	0	0
	Broiler Breeder Hens	0	0
Layers	White Layer Pullets	0	0
	White Layer Hens	0	0
	White Breeder Pullets	0	0
	White Breeder Hens	0	0
	Brown Layer Pullets	0	0
	Brown Layer Hens	0	0
	Brown Breeder Pullets	0	0
	Brown Breeder Hens	0	0
Turkeys	Broiler Turkey (0-9 wks)	0	0
	Hen Turkey (0-11 wks)	0	0
	Heavy Hens (0-14 wks)	0	0
	Toms (0-14 wks)	0	0
	Breeding Hen Growers (0-30 wks)	0	0
	Breeding Hens (31-End of Lay)	0	0
	Breeding Tom Grower (0-17 wks)	0	0
	Breeding Tom Grower (17-30 wks)	0	0
	Breeding Tom (31-End of Lay)	0	0
Total		101376	73215

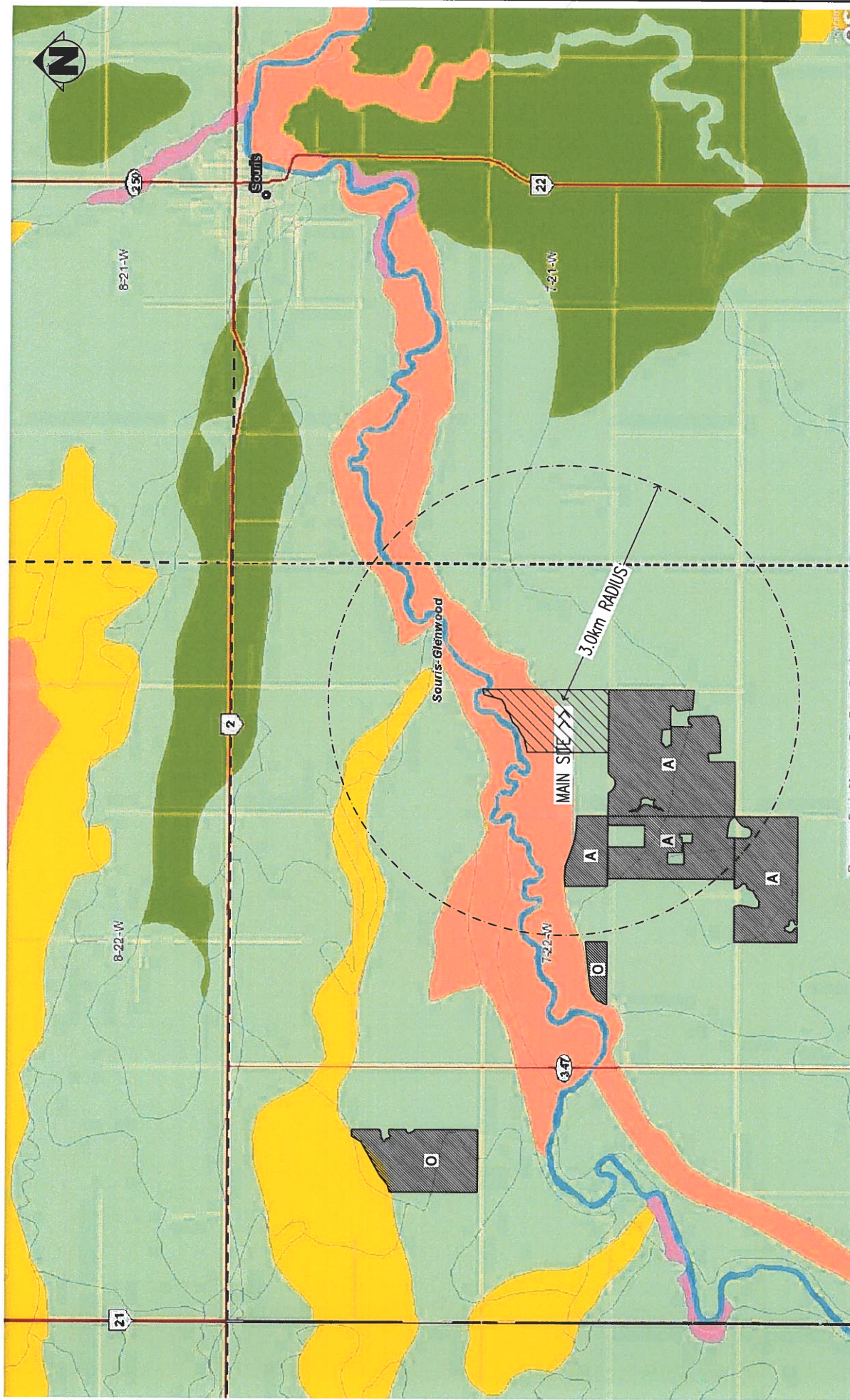
Note: Be sure all livestock species on your farm are represented in this table, not just the livestock in the proposed expansion.

4 - Land Base Summary**Operation Name:** Hogs Is Beautiful

Nutrients Excreted		lbs
Nitrogen		101376
Phosphorus (P2O5)		73215
Crop Nutrient Use		lb/ac
Average Crop N Uptake		124.6
Average Crop Phosphorus (P2O5) Removal		31.7
Operation-specific Phosphorus (P2O5) Allowance		63.3
Land Available		1492
Land Base Required		acres
Acres for Nitrogen		814
Acres for Phosphorus (P2O5)		1157
Phosphorus Balance		acres
Acres for Phosphorus Balance (1X)		2313

Note: For lands located in Hanover and/or La Broquerie, the acres required for phosphorus are based on phosphorus balance (1X). For other lands, the acres required for phosphorus are based on twice crop phosphorus removal (2X). Land requirements for operations with lands inside and outside Hanover and/or La Broquerie are based on a weighted average.

Last revised November 26, 2019



Source: Esri, Maxar, GeoEye, Earthstar Geographics, CNES/Airbus DS, USDA, USGS, AeroGRID, IGN, and the GIS User Community...

PROJECT NAME	HOGS IS BEAUTIFUL	BUILDING AREA	N/A
SHEET TITLE	SPREAD FIELD MAP	DRAWN BY	R. FLORES
DATE DRAWN	AUGUST 2020	DRAWING SCALE	SCALED TO FIT
THIS DRAWING IS THE PROPERTY OF SOUTH-MAN ENGINEERING, WINNIPEG, MANITOBA, CANADA.		SHEET NUMBER	
		SP-2B	

South-Man Engineering
 8-851 Logansdale Blvd. | Winnipeg, Manitoba | R2J 3K4
 PH: (204) 569-2652 | FAX: (204) 569-2204

LEGEND:

LO	- LIVESTOCK OPERATIONS	SOIL CLASS 1
O	- SPREAD FIELDS (OWNED)	SOIL CLASS 2
A	- SPREAD FIELDS (AGREEMENT)	SOIL CLASS 3
---	- 3km NOTIFICATION AREA FOR THE PUBLIC CONDITIONAL USE HEARING	SOIL CLASS 4
		SOIL CLASS 5
		SOIL CLASS 6



Soil Analysis by Agvise Laboratories
 (http://www.agvise.com)
 Northwood: (701) 587-6010
 Benson: (320) 843-4109

SOIL TEST REPORT

FIELD ID
 SAMPLE ID
 FIELD NAME
 COUNTY
 TWP **7** RANGE **22**
 SECTION **14** QTRSec ACRES **560.2**
 PREV. CROP

N
W E

SUBMITTED FOR:
 Ash Haven Farms

SUBMITTED BY: AG2493
 CPS-SOURIS
 HWY 2 EAST
 PO BOX 489
 SOURIS, MB
 ROK 2C0

REF # **2263436** BOX # **0**
 LAB # **NW19156**

Date Sampled _____ Date Received **05/07/2018** Date Reported **5/8/2018**

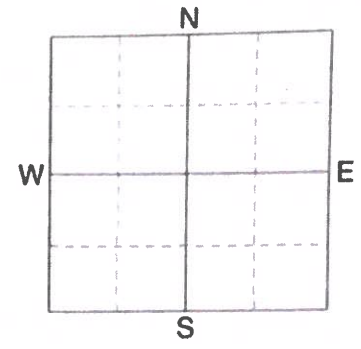
Nutrient In The Soil		Interpretation	1st Crop Choice		2nd Crop Choice		3rd Crop Choice	
			YIELD GOAL		YIELD GOAL		YIELD GOAL	
			SUGGESTED GUIDELINES		SUGGESTED GUIDELINES		SUGGESTED GUIDELINES	
			LB/ACRE	APPLICATION	LB/ACRE	APPLICATION	LB/ACRE	APPLICATION
Nitrate	0-6"	15 lb/ac						
	6-24"	30 lb/ac						
	0-24"	45 lb/ac						
Olsen	19 ppm							
Potassium	248 ppm							
Sulfur	0-6"	110 lb/ac						
	6-24"	360 +lb/ac						
Zinc	1.20 ppm							
Copper	0.73 ppm							
Calcium								
Sodium								
Org.Matter	2.6 %							
Carbonate(CCE)								
Sol. Salts	0-6"	0.48 mmho/cm						
	6-24"	0.7 mmho/cm						



Soil Analysis by Agvise Laboratories
 (http://www.agvise.com)
 Northwood: (701) 587-6010
 Benson: (320) 843-4109

SOIL TEST REPORT

FIELD ID
 SAMPLE ID **E 1/2 15-7-22**
 FIELD NAME
 COUNTY **22**
 TWP **7** RANGE
 SECTION **15** QTRE 1/2 ACRES **0**
 PREV. CROP **Canola-bu**



SUBMITTED FOR:
DUSTIN WILLIAMS
 SOURIS, MB

SUBMITTED BY: RE0757
REDFERN FARM SERVICE
3 MILE E HWY 2
BOX 473
 SOURIS, MB **R0K 2C0**

REF # **19650719** BOX # **4320**
 LAB # **NW81890**

Date Sampled **09/14/2018** Date Received **09/19/2018** Date Reported **10/4/2018**

Nutrient In The Soil		Interpretation				1st Crop Choice			2nd Crop Choice			3rd Crop Choice				
		VLow	Low	Med	High	Wheat-Spring			Corn-Grain			Wheat-Spring				
Nitrate	0-6"				YIELD GOAL			YIELD GOAL			YIELD GOAL				
	6-24"				60 BU			170 BU			70 BU				
	0-24"				SUGGESTED GUIDELINES			SUGGESTED GUIDELINES			SUGGESTED GUIDELINES				
					Band			Band			Band				
					LB/ACRE	APPLICATION		LB/ACRE	APPLICATION		LB/ACRE	APPLICATION			
Phosphorus	Olsen				N	135		N	177		N	162			
Potassium					P ₂ O ₅	41	Band *	P ₂ O ₅	73	Band *	P ₂ O ₅	48	Band *		
Chloride	0-24"				K ₂ O	10	Band (Starter)*	K ₂ O	10	Band (2x2) *	K ₂ O	10	Band (Starter)*		
	0-6"				Cl	0		Cl		Not Available	Cl	0			
Sulfur	6-24"				S	0		S	0		S	0			
Baron					B	0		B	0		B	0			
Zinc					Zn	2	Band (Trial)	Zn	3	Band	Zn	2	Band (Trial)		
Iron					Fe	0		Fe	0		Fe	0			
Manganese					Mn	0		Mn	0		Mn	0			
Copper					Cu	1	Band (Trial)	Cu	0		Cu	1	Band (Trial)		
Magnesium					Mg	0		Mg	0		Mg	0			
Calcium					Lime			Lime			Lime				
Sodium					Soil pH			Cation Exchange Capacity			% Base Saturation (Typical Range)				
Org.Matter					0-6"	7.0		29.2 meq	(65-75)	(15-20)	(1-7)	(0-5)	(0-5)		
Carbonate(CCE)					6-24"	7.7								% Ca	% Mg
Sol Salts															

General Comments: Fine Loams (CEC range 21 to 30) (Medium)
Crop 1: * Caution: Seed Placed Fertilizer Can Cause Injury * Many crops may respond to a starter application of P & K even on high soil tests. Crop Removal: P2O5 = 38 K2O = 23 AGVISE Band guidelines will build P & K test levels to the medium range over many years.
Crop 2: ** Chloride yield data is limited for this crop. * Caution: Seed Placed Fertilizer Can Cause Injury * Many crops may respond to a starter application of P & K even on high soil tests. Crop Removal: P2O5 = 68 K2O = 46 AGVISE Band guidelines will build P & K test levels to the medium range over many years.
Crop 3: * Caution: Seed Placed Fertilizer Can Cause Injury * Many crops may respond to a starter application of P & K even on high soil tests. Crop Removal: P2O5 = 44 K2O = 26 AGVISE Band guidelines will build P & K test levels to the medium range over many years.

SOIL TEST REPORT

Field #3

Grower: Souris River Colony Farms Ltd. (BILLING ACCOUNT)
 Farm: Mentiett
 Field: 16354 - Bobby 29-7-22W
 Legal: W 29-7-22-W1

Report Number: C19308-10566
 Received Date: 2019-11-04

Sample ID	Depth Inches	GPI %	OM %	CEC meq/100g	Ph	Ph B	SS mmhos/cm	NO3 ppm	NO3 lbs	NH4 ppm	S ppm	Bi Carb ppm	P1 ppm	P2 ppm	Sat P %	K ppm	K% %	AI ppm	CI ppm	P Mehlichp ppm
C19308-10566	0-6"		2.8	24.2	7.7		0.4	3	6	0	60	9	16	0	2	87	0.9	164	8	20.47
C19308-10566	6-12"		0	0	0	0	0.28	2	4	0	14	0	0	0	0	0	0	0	0	7.1
C19308-10566	12-24"		0	0	0	0	0.35	2	8	0	11	0	0	0	0	0	0	0	0	4
Sample ID	Depth Inches	Water Inches	Ca ppm	%Ca %	%H %	Na ppm	%Na %	Mg ppm	%Mg %	K/Mg	Zn ppm	Mn ppm	Fe ppm	Cu ppm	B ppm	Mo ppm	Carbonate L.H.H	Base Sat. %	Urea ppm	
C19308-10566	0-6"		3130	64.8	0	45	0.8	985	34	0.03	2	77	43	0.5	1.1	0.1				
C19308-10566	6-12"		3400	0	0	74	0	0	0		0	0	0	0	0.9	0				
C19308-10566	12-24"		6260	0	0	57	0	0	0		0	0	0	0	0.4	0				

SOIL TEST REPORT

Field #5

Grower: Souris River Colony Farms Ltd. (BILLING ACCOUNT)
 Farm: Mentielt
 Field: 16358 - South River E 22-7-22
 Legal: S 22-7-22-W1

Report Number: C19308-10567
 Received Date: 2019-11-04

Sample ID	Depth Inches	GPI %	OM %	CEC meq/100g	Ph	Ph B	SS mm/hes/cm	NO3 ppm	NO3 lbs	NH4 ppm	S ppm	Bi Carb ppm	P1 ppm	P2 ppm	Sat %	K ppm	K% %	Al ppm	Cl ppm	P Mehlichp ppm	Urea ppm
Sample ID	Depth Inches	Water Inches	Ca ppm	%Ca %	%H %	Na ppm	%Na %	Mg ppm	%Mg %	K/Mg	Zn ppm	Mn ppm	Fe ppm	Cu ppm	B ppm	Mo ppm	Carbonate L,N,H	Base Sat. %			
C19308-10567	0-6"		1.9	16.8	7.6		0.24	2	4	0	12	41	69	0	6	187	2.9	102	37	89.07	
C19308-10567	6-12"		0	0	0	0.29		2	4	0	20	0	0	0	0	0	0	0	0	52.82	
C19308-10567	12-24"		0	0	0	0.69		2	8	0	142	0	0	0	0	0	0	0	0	15.11	
C19308-10567	0-6"			2360	70.3	63	1.6	514	25.5	0.11	5.1	46	60	0.6	0.4	0.1					
C19308-10567	6-12"			2960	0	44	0	0	0		0	0	0	0	0.8	0					
C19308-10567	12-24"			7200	0	52	0	0	0		0	0	0	0	0.8	0					

SOIL TEST REPORT

Field #6

Grower: Souris River Colony Farms Ltd. (BILLING ACCOUNT)
 Farm: Mentiett
 Field: 16356 - West40 W 21-7-22
 Legal: SE 21-7-22-W1

Report Number: C19308-10567
 Received Date: 2019-11-04

Sample ID	Depth Inches	GPI %	OM %	CEC meq/100g	Ph	Ph B	SS mmhos/cm	NO3 ppm	NO3 lbs	NH4 ppm	S ppm	Bi Carb ppm	P1 ppm	P2 ppm	Sat %	P% %	K ppm	K% %	Al ppm	Cl ppm	P Mehlichp ppm	Urea ppm
C19308-10567	0-6"		1.9	16.8	7.6		0.24	2	4	0	12	41	69	0	6		187	2.9	102	37	89.07	
C19308-10567	6-12"		0	0	0		0.29	2	4	0	20	0	0	0	0		0	0	0	0	52.82	
C19308-10567	12-24"		0	0	0		0.69	2	8	0	142	0	0	0	0		0	0	0	0	15.11	
Sample ID	Depth Inches	Water Inches	Ca ppm	%Ca %	%H %	Na ppm	%Na %	Mg ppm	%Mg %	K/Mg ppm	Zn ppm	Mn ppm	Fe ppm	Cu ppm	B ppm	Mo ppm	Carbonate L,M,H	Base Sat. %	Urea ppm			
C19308-10567	0-6"		2360	70.3	0	63	1.6	514	25.5	0.11	5.1	46	60	0.6	0.4	0.1						
C19308-10567	6-12"		2960	0	0	44	0	0	0		0	0	0	0	0.8	0						
C19308-10567	12-24"		7200	0	0	52	0	0	0		0	0	0	0	0.8	0						

Field #7

WH7

115-30-10-0



Soil Analysis by Agvise Laboratories
 1110 Broadway, Suite 100
 Northwood: (701) 587-6010
 Benson: (320) 843-4109

SOIL TEST REPORT

FIELD ID
 SAMPLE ID **N 1/2 10-7-22**
 FIELD NAME
 COUNTY **22**
 TWP **7** RANGE
 SECTION **10** QTR **N 1/2** ACRES **0**
 PREV. CROP **Canola-bu**

SUBMITTED FOR:
DUSTIN WILLIAMS

SOURIS, MB

SUBMITTED BY: **RE0757**
REDFERN FARM SERVICE
3 MILE E HWY 2
BOX 473
SOURIS, MB

R0K 2C0

REF # **19650718** BOX # **4367**
 LAB # **NW81889**

Date Sampled **09/14/2018**

Date Received **09/19/2018**

Date Reported **9/28/2018**

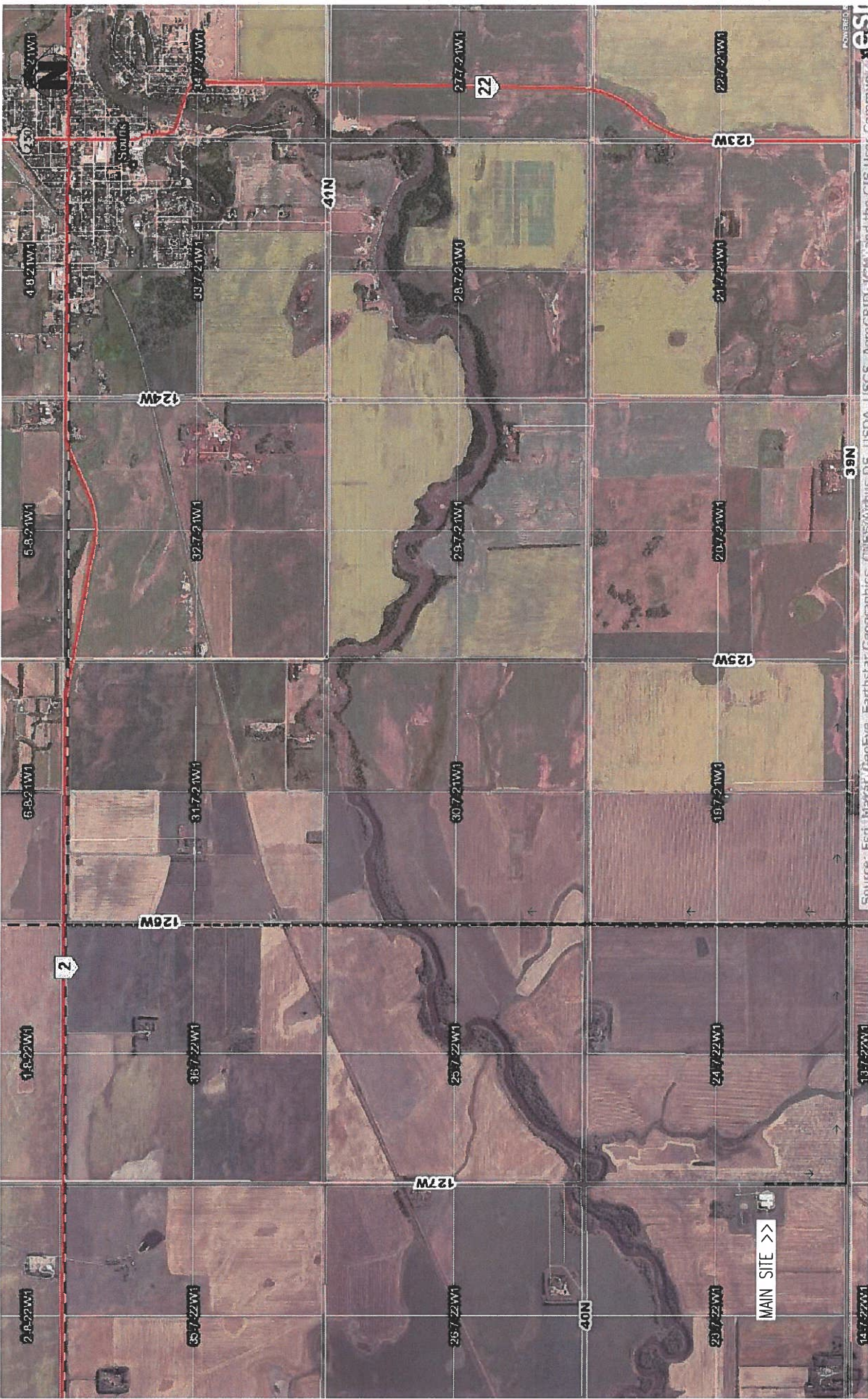
	Wheat Spring		Corn-Grain		Canola bu	
	YIELD GOAL		YIELD GOAL		YIELD GOAL	
	60 BU		170 BU		70 BU	
	SUGGESTED GUIDELINES		SUGGESTED GUIDELINES		SUGGESTED GUIDELINES	
	Band		Band		Band	
	LB/ACRE	APPLICATION	LB/ACRE	APPLICATION	LB/ACRE	APPLICATION
Nitrate						
	0-6"	11 lb/ac				
	6-24"	18 lb/ac				
	0-24"	29 lb/ac				
Phosphorus	Olsen	7 ppm	N 133	N 175	N 216	
Potassium		199 ppm	P₂O₅ 37	P₂O₅ 64	P₂O₅ 63	Band *
	0-24"	172 lb/ac	K₂O 10	K₂O 10	K₂O 0	Band (2x2) *
	0-6"	120 +lb/ac	Cl 0	Cl	Cl	Not Available
	6-24"	360 +lb/ac	S 0	S 0	S 10	Band
Sulfur		0.8 ppm	B 0	B 0	B 0	
Boron		0.68 ppm	Zn 2	Zn 2	Zn 2	Band (Trial)
Zinc		65.1 ppm	Fe 0	Fe 0	Fe 0	
Iron		20.6 ppm	Mn 0	Mn 0	Mn 0	
Manganese		0.52 ppm	Cu 1	Cu 0	Cu 0	
Copper		585 ppm	Mg 0	Mg 0	Mg 0	
Magnesium		4794 ppm	Lime 0	Lime 0	Lime 0	
Calcium		107 ppm				
Sodium		3.3 %				
Org Matter		2.6 %				
Carbonate(CCE)		1.09 mmho/cm				
		1.39 mmho/cm				
Soil Salts						
	0-6"		Soil pH	Buffer pH	Cation Exchange Capacity	% Base Saturation (Typical Range)
	6-24"		0-6" 6.8		29.8 meq	% Ca (6.5-7.5) % Mg (1.5-2.0) % K (1-7) % Na (0-3) % H (0-5)
			6-24" 7.6			80.4 16.3 1.7 1.6

General Comments: Fine Loams (CEC range 21 to 30) (Medium)

Crop 1: * Caution: Seed Placed Fertilizer Can Cause Injury * Many crops may respond to a starter application of P & K even on high soil tests. Crop Removal: P205 = 38 K2O = 23 AGVISE Band guidelines will build P & K test levels to the medium range over many years.

Crop 2: ** Chloride yield data is limited for this crop. * Caution: Seed Placed Fertilizer Can Cause Injury * Many crops may respond to a starter application of P & K even on high soil tests. Crop Removal: P205 = 68 K2O = 46 AGVISE Band guidelines will build P & K test levels to the medium range over many years.

Crop 3: ** Chloride yield data is limited for this crop. * Caution: Seed Placed Fertilizer Can Cause Injury * Many crops may respond to a starter application of P & K even on high soil tests. Crop Removal: P205 = 63 K2O = 32 AGVISE Band guidelines will build P & K test levels to the medium range over many years.



PROJECT NAME	HOGS IS BEAUTIFUL	BUILDING AREA	N/A
SHEET TITLE	TRUCK HAUL ROUTE	DRAWN BY	R. FLORES
DATE DRAWN	AUGUST 2020	DRAWING SCALE	SCALED TO FIT
		SHEET NUMBER	SP-3



 South-Man Engineering

4851 Lacombe Blvd | Winnipeg, Manitoba | R2J 3K4
 PH: (204) 646-4652 | FAX: (204) 646-2261

THIS DRAWING IS THE PROPERTY OF SOUTH-MAN ENGINEERING, WINNIPEG, MANITOBA, CANADA.
 C:\Users\yicha\Desktop\SMER\chgs\Hogs Is Beautiful\HOGS IS BEAUTIFUL_TECH_REVIEW_rv003.dwg



Desalegn Edossa <desalegn.southmaneng@gmail.com>

DR D Edossa SM Eng 20200810 Hogs beau SE-23-007-22W1

1 message

Murray, Colin (ARD) <Colin.Murray@gov.mb.ca>
 To: Desalegn Edossa <desalegn.southmaneng@gmail.com>

Wed, Aug 19, 2020 at 4:02 PM

Hi Desalegn

Thank you for your information request. I completed a search of the Manitoba Conservation Data Centre's (CDC) rare species database for your area of interest. This includes the primary locations: SE-23-007-22W1; and a 2km radius buffer from the footprint boundary.

The search resulted in the following occurrences:

1. Within the footprint or primary location(s):

No listed or tracked species occurrences found at this time.

2. Within 2km of the footprint boundary:

INFORMAL TAXA	SCIENTIFIC NAME	COMMON NAME	SRANK	ESEA	SARA	COSEWIC
Vertebrate Animal	<i>Athene cucularia</i>	(Burrowing Owl)	S1B	Endangered	Endangered	Endangered

3. General area records low locational accuracy:

INFORMAL TAXA	SCIENTIFIC NAME	COMMON NAME	SRANK	ESEA	SARA	COSEWIC
Invertebrate Animal	<i>Anisota manitobensis</i>	(Manitoba Oakworm Moth)	S2			Special Concern

4. Found in broader area and similar habitat:

INFORMAL TAXA	SCIENTIFIC NAME	COMMON NAME	SRANK	ESEA	SARA	COSEWIC
Vertebrate Animal	<i>Ammodramus savannarum</i>	(Grasshopper Sparrow)	S2S3B			
Vertebrate Animal	<i>Anthus spragueii</i>	(Sprague's Pipit)	S2B	Threatened	Threatened	Threatened
Vertebrate Animal	<i>Dolichonyx oryzivorus</i>	(Bobolink)	S3S4B		Threatened	Threatened
Vascular Plant	<i>Cymopterus glomeratus</i>	(Plains Cymopterus)	S2S3			

Further information on this ranking system can be found on our website at: <http://www.natureserve.org/conservation-tools/conservation-status-assessment>.

These designations can be found at:

<http://web2.gov.mb.ca/laws/statutes/ccsm/e111e.php>,

<https://www.canada.ca/en/environment-climate-change/services/committee-status-endangered-wildlife.html> and

<http://www.sararegistry.gc.ca/default.asp?lang=En&n=24F7211B-1>.

Manitoba's recommended setback distances can be found at: https://www.gov.mb.ca/sd/pubs/conservation-data-centre/mbcddc_bird_setbacks.pdf.

The information provided in this letter is based on existing data known to the Manitoba CDC of the Wildlife and Fisheries Branch at the time of the request. These data are dependent on the research and observations of CDC staff and others who have shared their data, and reflect our current state of knowledge. **An absence of data does not confirm the absence of any rare or endangered species.** Many areas of the province have never been thoroughly surveyed, however, and the absence of data in any particular geographic area does not necessarily mean that species or ecological communities of concern are not present. The information should, therefore, not be regarded as a final statement on the occurrence of any species of concern nor should it substitute for on-site surveys for species or environmental assessments. Also, because our Biotics database is continually updated and because information requests are evaluated by type of action, any given response is only appropriate for its respective request.

Please contact the Manitoba CDC for an update on this natural heritage information if more than six months passes before it is utilised.

Third party requests for products wholly or partially derived from the Biotics database must be approved by the Manitoba CDC before information is released. Once approved, the primary user will identify the Manitoba CDC as data contributors on any map or publication using data from our database, as the Manitoba Conservation Data Centre; Wildlife and Fisheries Branch, Manitoba Sustainable Development.

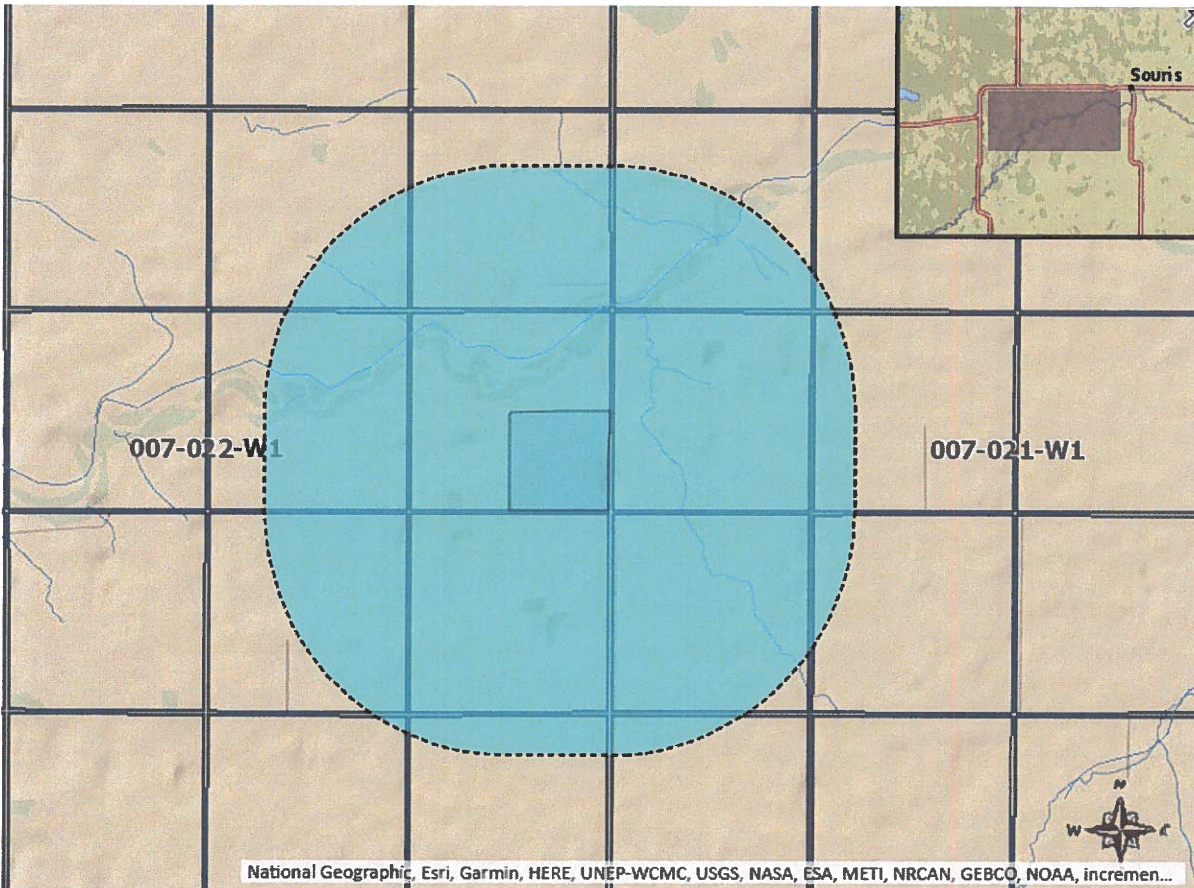
This letter is for information purposes only - it does not constitute consent or approval of the proposed project or activity, nor does it negate the need for any permits or approvals required by the Province of Manitoba.

We would be interested in receiving a copy of the results of any field surveys that you may undertake, to update our database with the most current knowledge of the area.

If you have any questions or require further information contact me directly at (204) 945-7760.

Colin

Reference screen clip:



8/19/2020

Gmail - DR D Edossa SM Eng 20200810 Hogs beau SE-23-007-22W1

Colin Murray
Information Manager
Manitoba Conservation Data Centre
Wildlife and Fisheries Branch
Agriculture and Resource Development

200 Saulteaux Crescent
Winnipeg, Manitoba, R3J3W3
204-945-7760
colin.murray@gov.mb.ca
<http://www.gov.mb.ca/sd/cdc/index.html>



-----Original Message-----

From: +WPG969 - Form Submissions (FIN) <noreply@gov.mb.ca>
Sent: August 5, 2020 9:43 AM
To: Murray, Colin (ARD) <Colin.Murray@gov.mb.ca>
Subject: WWW Form Submission

Below is the result of your feedback form. It was submitted by CDC Information Request () on Wednesday, August 5, 2020 at 09:43:00

DocumentID: Manitoba_Sustainable_Development

Project Title: Hogs is Beautiful

Date Needed: 2020/08/10

Name: Desalegn Edossa

Company/Organization: South-Man Engineering

Address: 8-851 Lagimodiere BLVD

City: winnipeg

Province/State: Manitoba

Phone: (204) 668-9652

Fax: (204) 668-9204

Email: desalegn.southmaneng@gmail.com

Project Description: The information will be used to determine the impacts on species by a proposed expansion of livestock operation.

Information Requested: Would like to know if there are any species at risk or endangered in region that may be impacted by the proposed expansion of livestock operation.

Format Requested: Microsoft Word Document as email attachment.

Location: RM of Souris-Glenwood on SE 23-7-22W

action: Submit

THE MUNICIPALITY OF SOURIS-GLENWOOD

APPLICATION FOR CONDITIONAL USE

Application File No. 2020-01

Roll No. 478700

OWNER INFORMATION

Owner name(s)* Horsley Beautiful

Owner mailing address 685 Souris MB Phone No. 769-2102 E-mail George Wipr@gmail.com

* An application may be filed by any person other than the owner, but only if that person also provides written authorization by the owner(s) to file an application for this property.

** Application Fee \$200.00 – must be received with completed application. ✓

LAND LOCATION

Civic Address or location _____

Lot _____ Block _____ Plan _____

Quarter SE 23 Township 7 Range 22 Meridian _____

DESCRIPTION OF PROPOSED DEVELOPMENT

Description of proposed building or development Extension of existing Barn & Extension of Lagoon

ADDITIONAL INFORMATION

Site Plan

A preliminary site plan showing the following information is required:

- The shape and dimensions of the site to be used or built upon,
- The location and dimensions of existing buildings and structures,
- The locations and dimensions of the proposed building, structure, (including separation distances from site boundaries),
- The use or uses of existing and proposed buildings on the site, and
- Vehicular access and utility connections that may be required to service the building.

Other Information

Other information may also be required by the Council.

DECLARATION

I, George Wipr, hereby make application to establish the proposed building and/or development at the land location described above as a conditional use, in accordance with the attached site plan and the provisions of the Town of Souris Zoning By-Law No. 1620 (as amended).

I undertake to comply with all of the requirements of the Town of Souris Zoning By-law and any other municipal by-law that may be applicable to the proposed development, along with any regulation, order, condition of approval, or other municipal requirement in connection with the proposed development.

I understand that the conditional use process is a public process which requires the disclosure of certain information by the municipality in connection with this proposed development, and I hereby authorize the municipality and its designated agents or officers to release all information that I have provided in connection with this proposed development.

I undertake to indemnify and save harmless the Town of Souris against all losses, costs, charges or damages caused by or arising out of anything done pursuant to this proposed development.

George Wipr Date July 5 20
Owner(s) Signature(s)

For Municipal Use

Zoning By-law Requirements:

Minimum Site Area _____ sq.ft. Minimum Site Width _____ feet
Minimum Required Yards* Front _____ ft. Side _____ ft. Rear _____ ft.
Other requirement(s) _____

Fees: Basic Application Fee \$ 200.00 Receipt No. _____
Date Completed Application Received July 1 - 2020