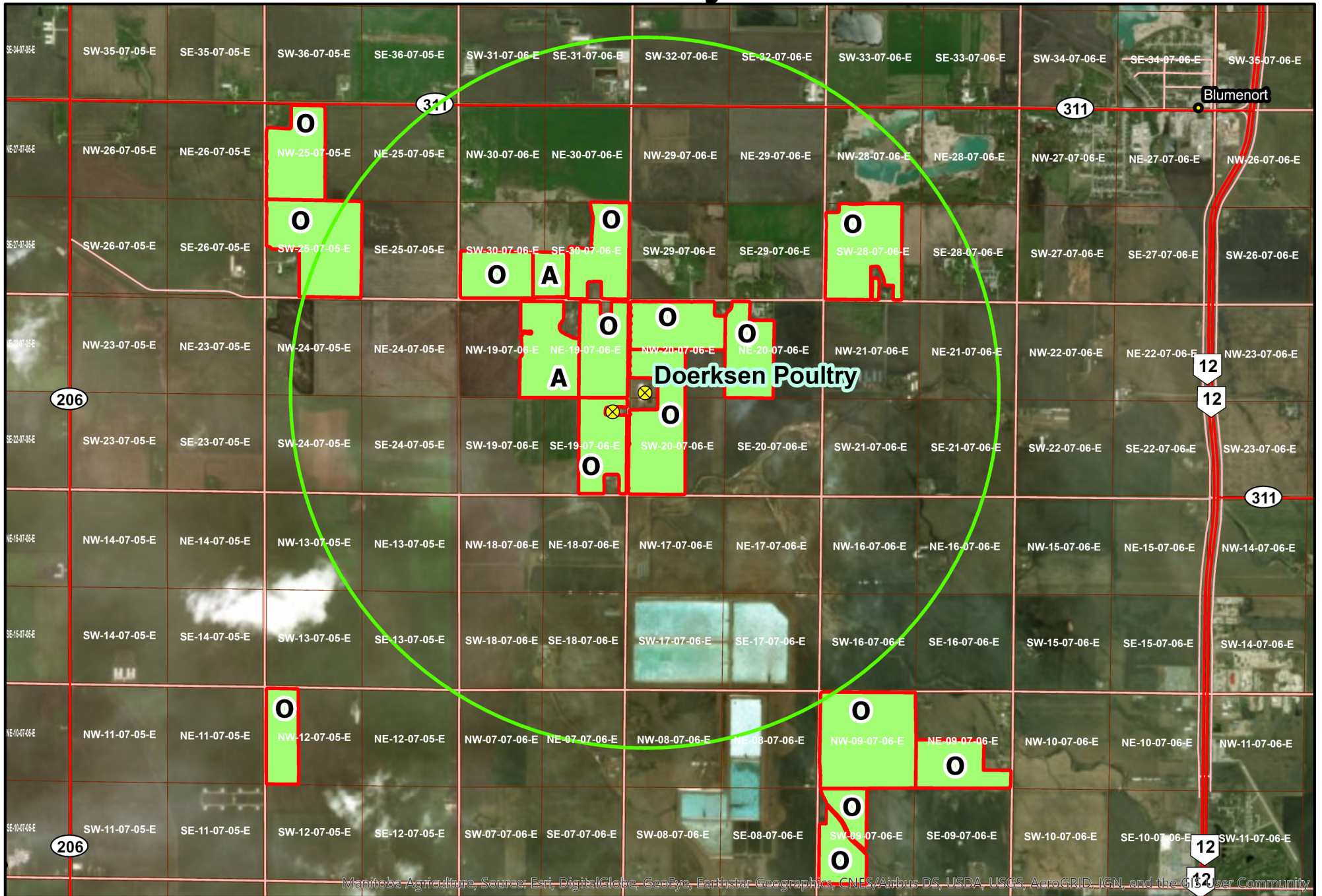


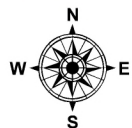
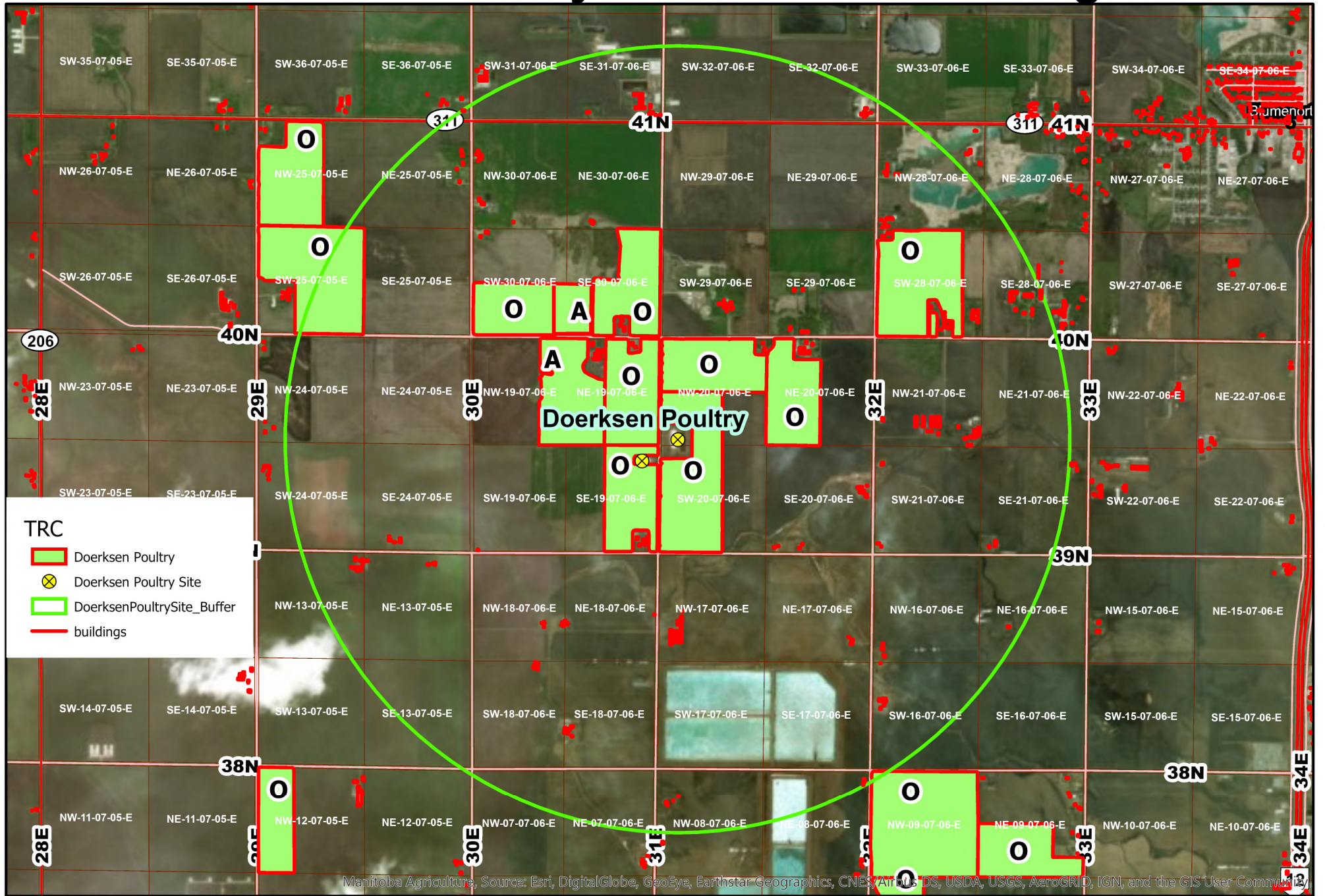
Doerksen Poultry - Land Use



Manitoba Agriculture, Source: Esri, DigitalGlobe, GeoEye, Earthstar Geographics, CNES/Airbus DS, USDA, USGS, AeroGRID, IGN, and the GIS User Community



Doerksen Poultry - Land Use - Buildings

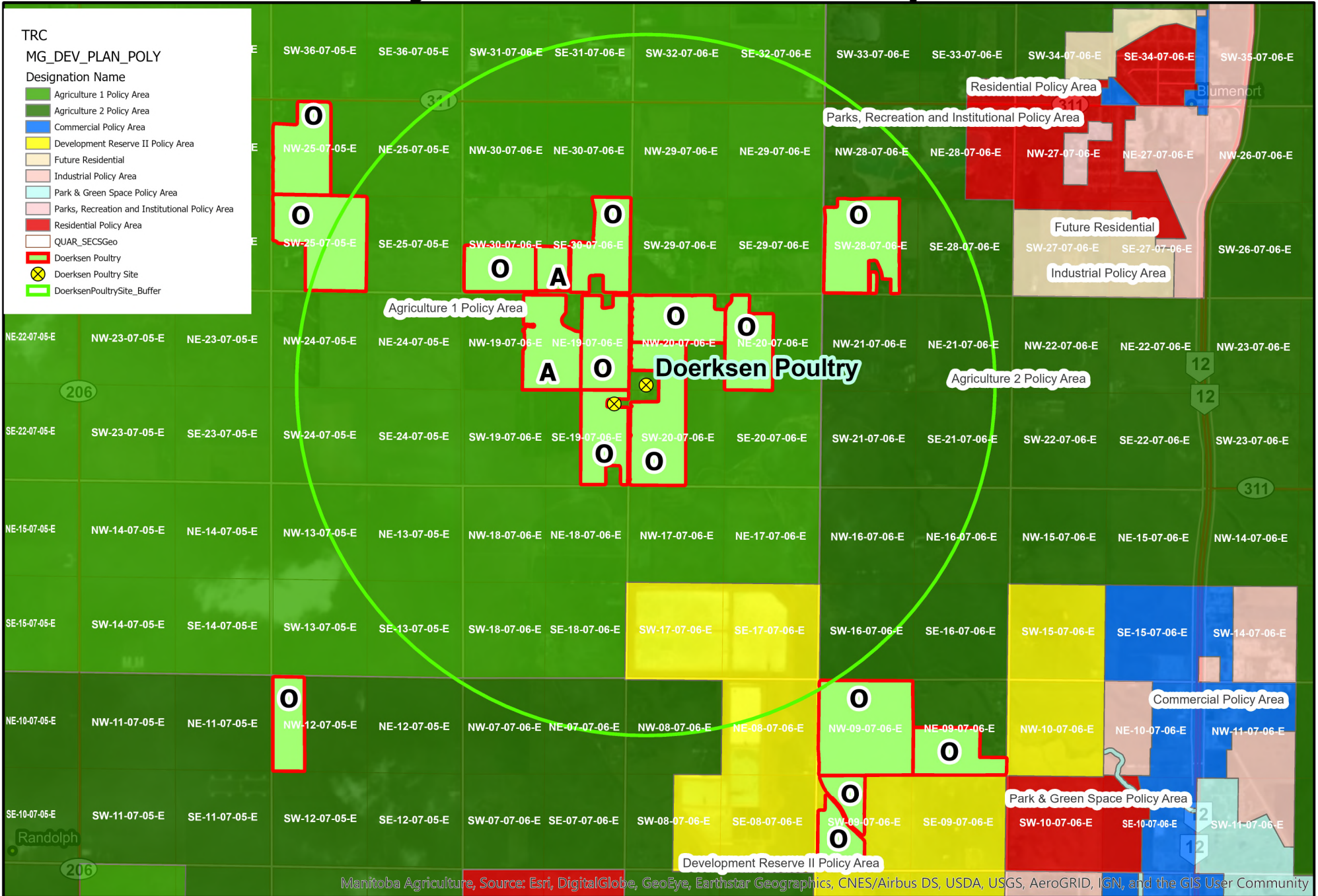


Doerksen Poultry - Land Use - Development Plan East

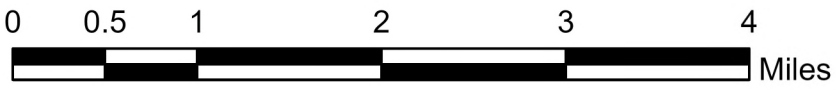
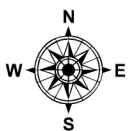
TRC
MG_DEV_PLAN_POLY

Designation Name

- Agriculture 1 Policy Area
- Agriculture 2 Policy Area
- Commercial Policy Area
- Development Reserve II Policy Area
- Future Residential
- Industrial Policy Area
- Park & Green Space Policy Area
- Parks, Recreation and Institutional Policy Area
- Residential Policy Area
- QUAR_SECSGeo
- Doerksen Poultry
- Doerksen Poultry Site
- DoerksenPoultrySite_Buffer



Manitoba Agriculture, Source: Esri, DigitalGlobe, GeoEye, Earthstar Geographics, CNES/Airbus DS, USDA, USGS, AeroGRID, IGN, and the GIS User Community



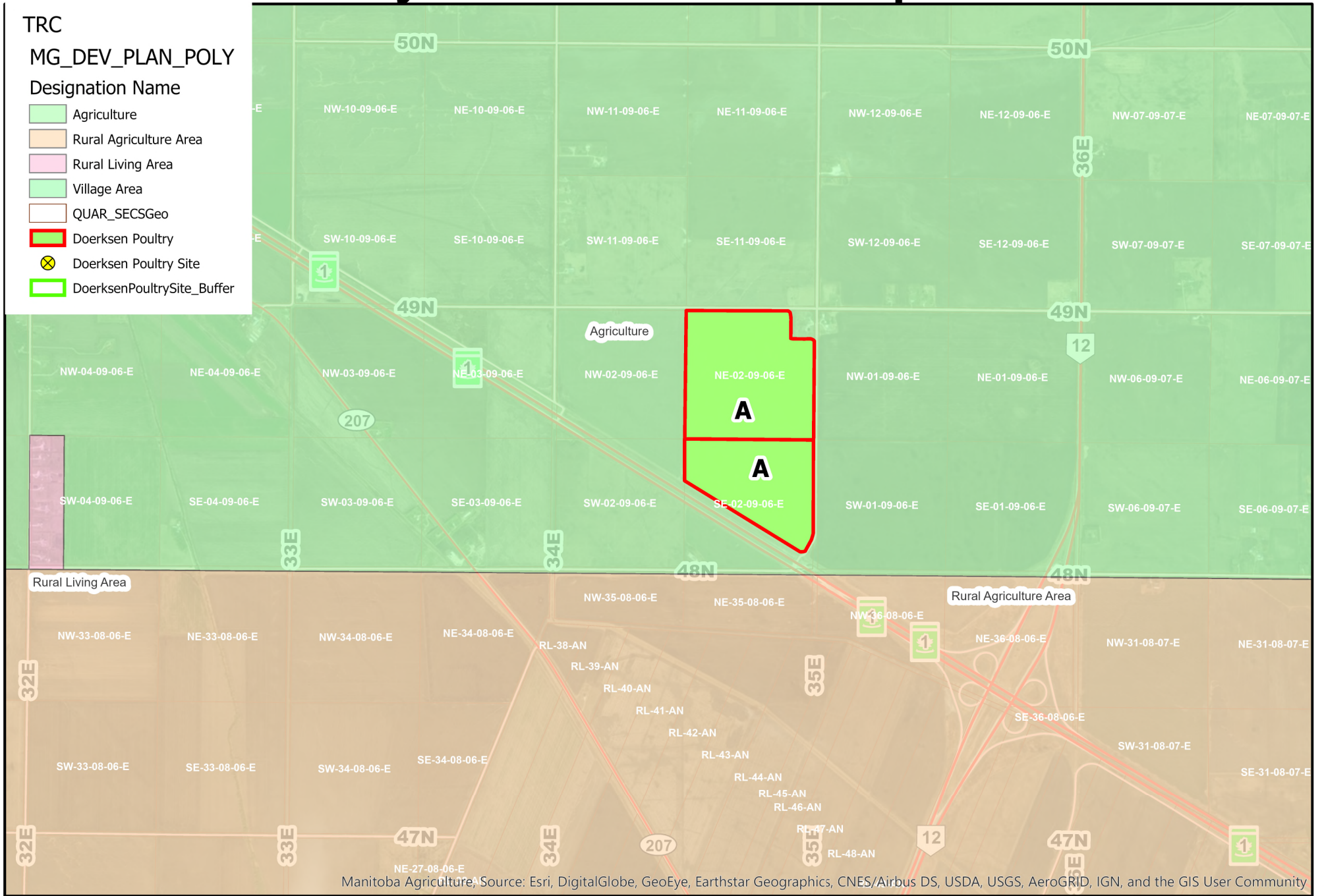
Doerksen Poultry - Land Use - Development Plan North

TRC

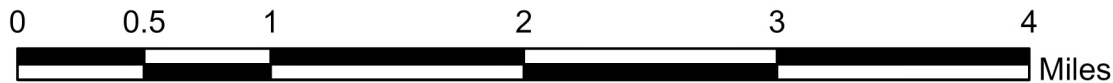
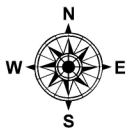
MG_DEV_PLAN_POLY

Designation Name

- Agriculture
- Rural Agriculture Area
- Rural Living Area
- Village Area
- QUAR_SECSGeo
- Doerksen Poultry
- Doerksen Poultry Site
- DoerksenPoultrySite_Buffer



Manitoba Agriculture, Source: Esri, DigitalGlobe, GeoEye, Earthstar Geographics, CNES/Airbus DS, USDA, USGS, AeroGRID, IGN, and the GIS User Community

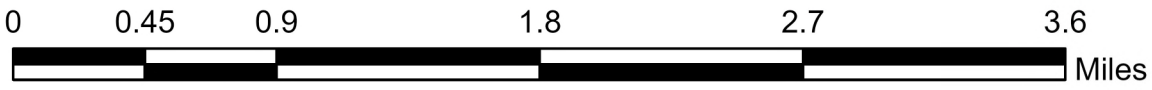
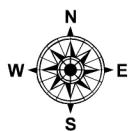


Doerksen Poultry - Land Use - Development Plan West

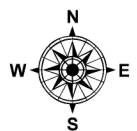
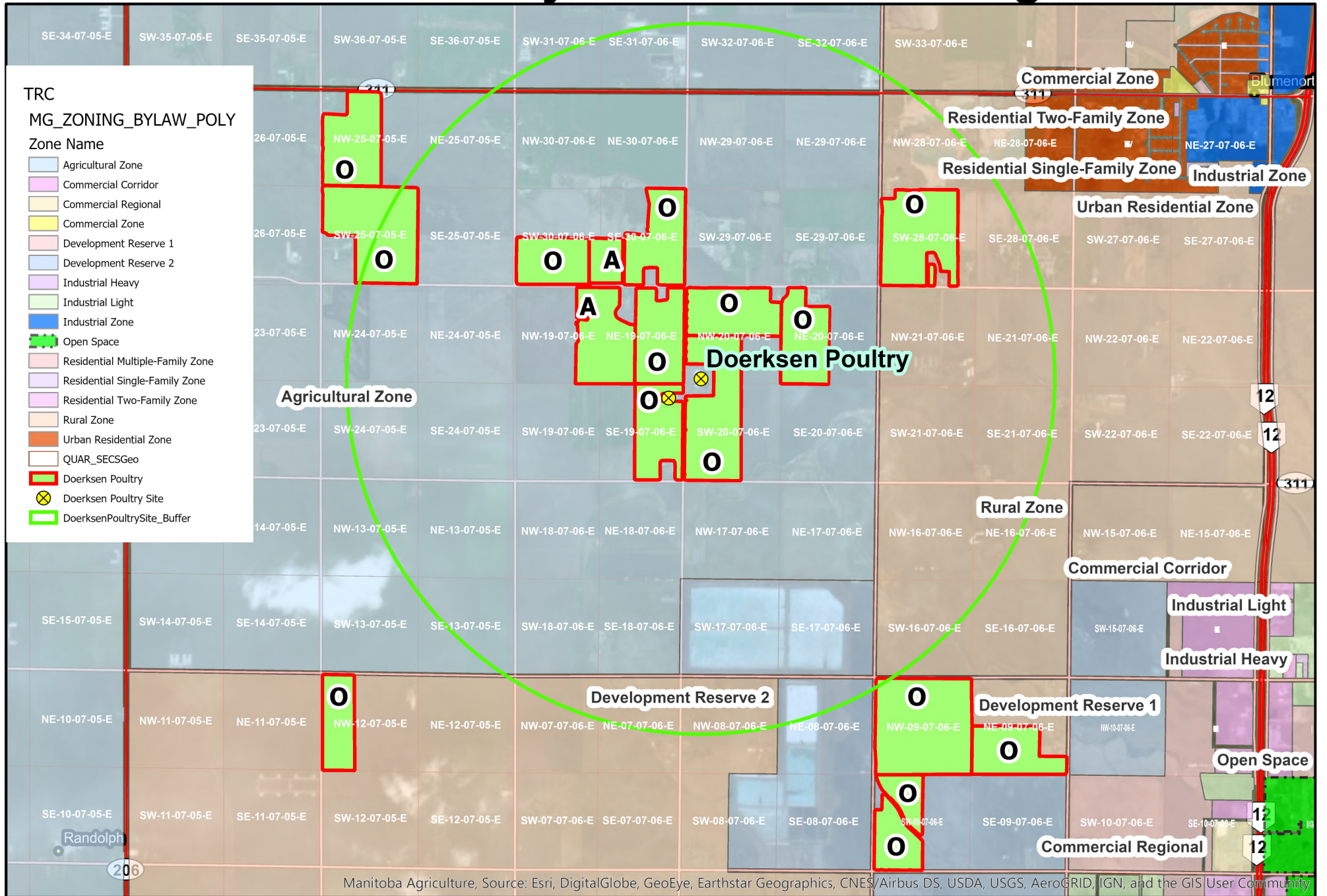
- TRC
MG_DEV_PLAN_POLY
- Designation Name
- Agriculture
 - Agriculture 1 Policy Area
 - Agriculture 2 Policy Area
 - Commercial Policy Area
 - Future Commercial
 - Future Residential
 - Industrial Policy Area
 - Parks, Recreation and Institutional Policy Area
 - Residential Policy Area
 - QUAR_SECSGeo
 - Doerksen Poultry
 - Doerksen Poultry Site
 - DoerksenPoultrySite_Buffer



Manitoba Agriculture, Source: Esri, DigitalGlobe, GeoEye, Earthstar Geographics, CNES/Airbus DS, USDA, USGS, AeroGRID, IGN, and the GIS User Community

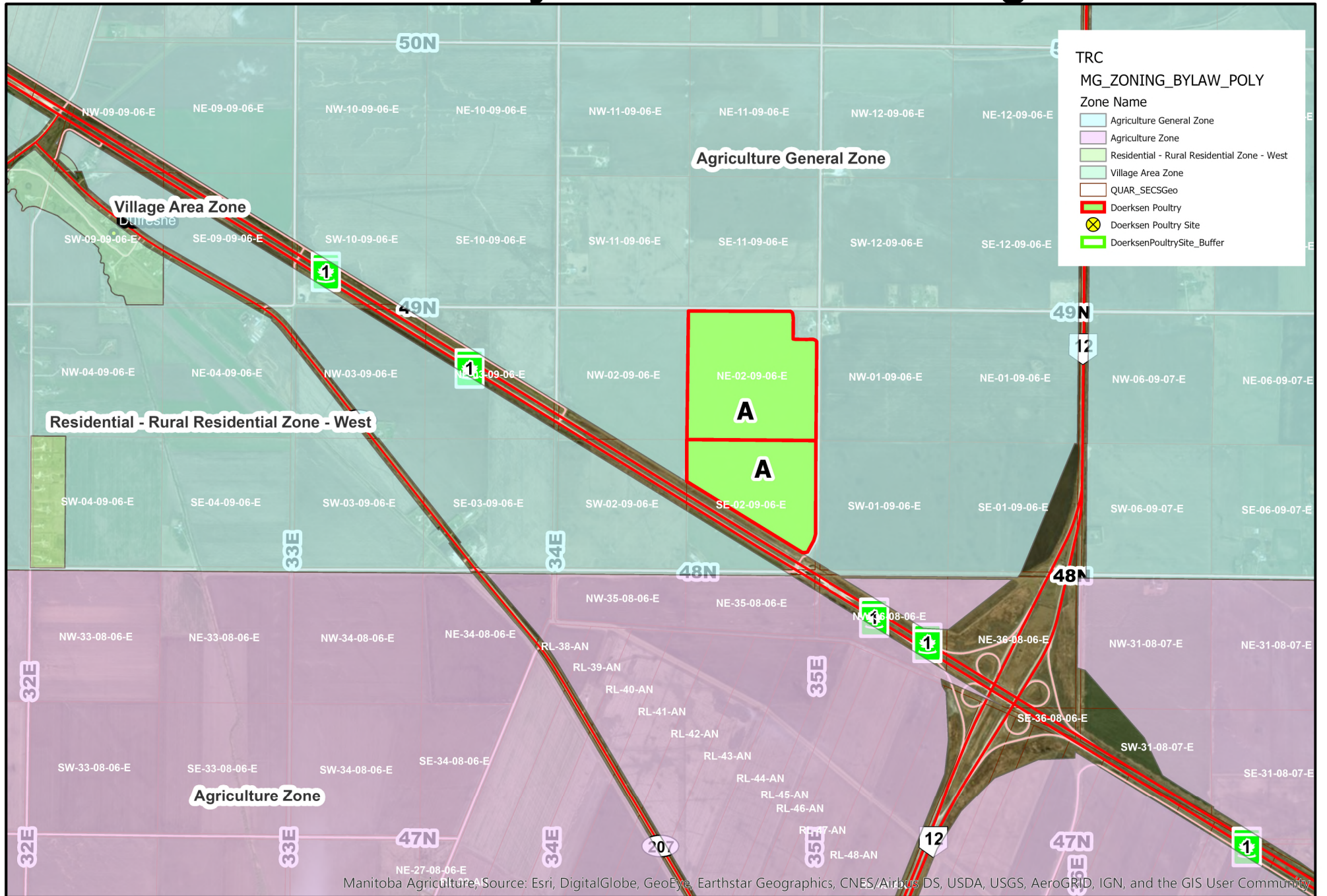


Doerksen Poultry - Land Use - Zoning East



Manitoba Agriculture, Source: Esri, DigitalGlobe, GeoEye, Earthstar Geographics, CNES/Airbus DS, USDA, USGS, AeroGRID, IGN, and the GIS User Community

Doerksen Poultry - Land Use - Zoning North

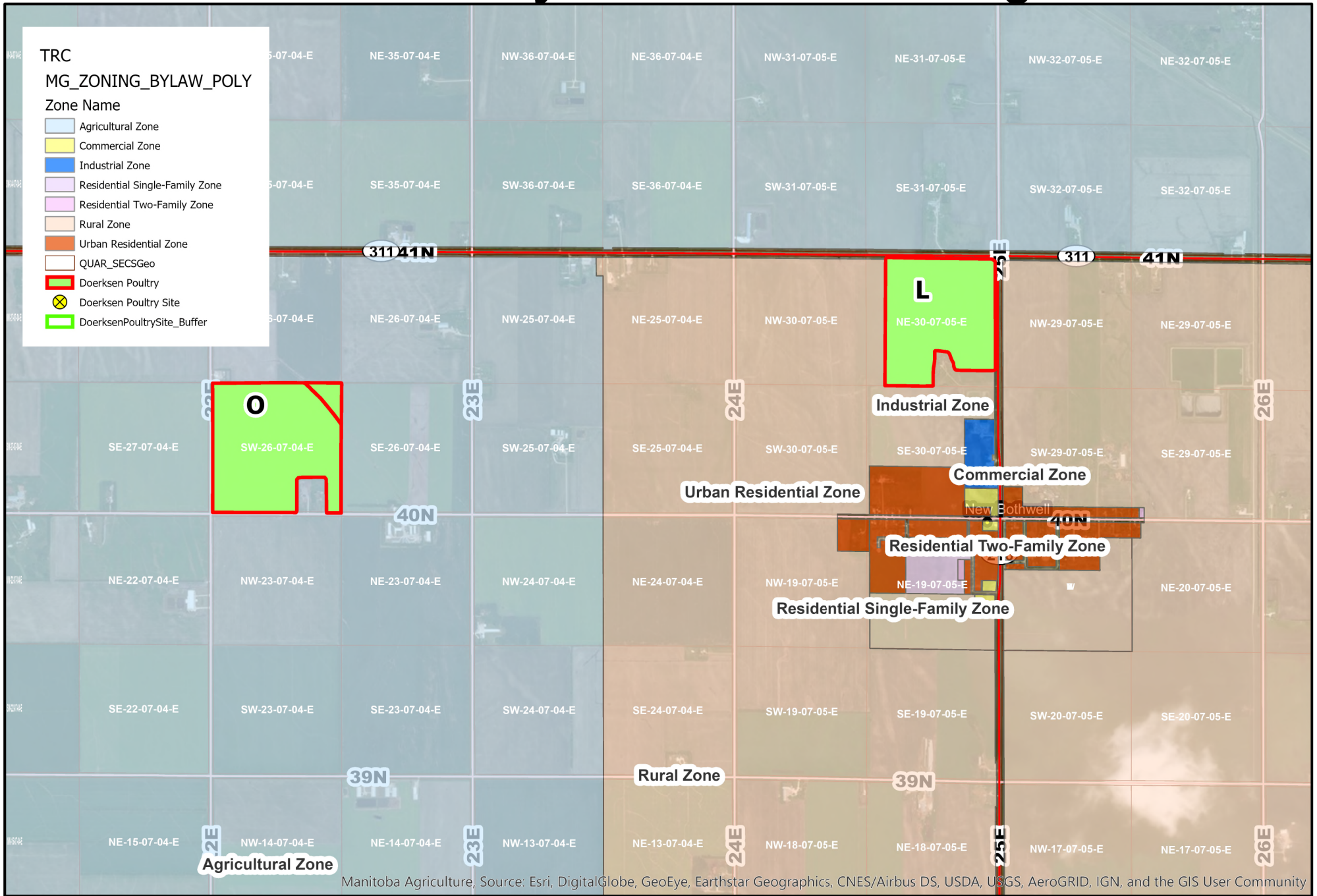


Doerksen Poultry - Land Use - Zoning West

TRC
MG_ZONING_BYLAW_POLY

Zone Name

- Agricultural Zone
- Commercial Zone
- Industrial Zone
- Residential Single-Family Zone
- Residential Two-Family Zone
- Rural Zone
- Urban Residential Zone
- QUAR_SECSGeo
- Doerksen Poultry
- X Doerksen Poultry Site
- DoerksenPoultrySite_Buffer



Manitoba Agriculture, Source: Esri, DigitalGlobe, GeoEye, Earthstar Geographics, CNES/Airbus DS, USDA, USGS, AeroGRID, IGN, and the GIS User Community

