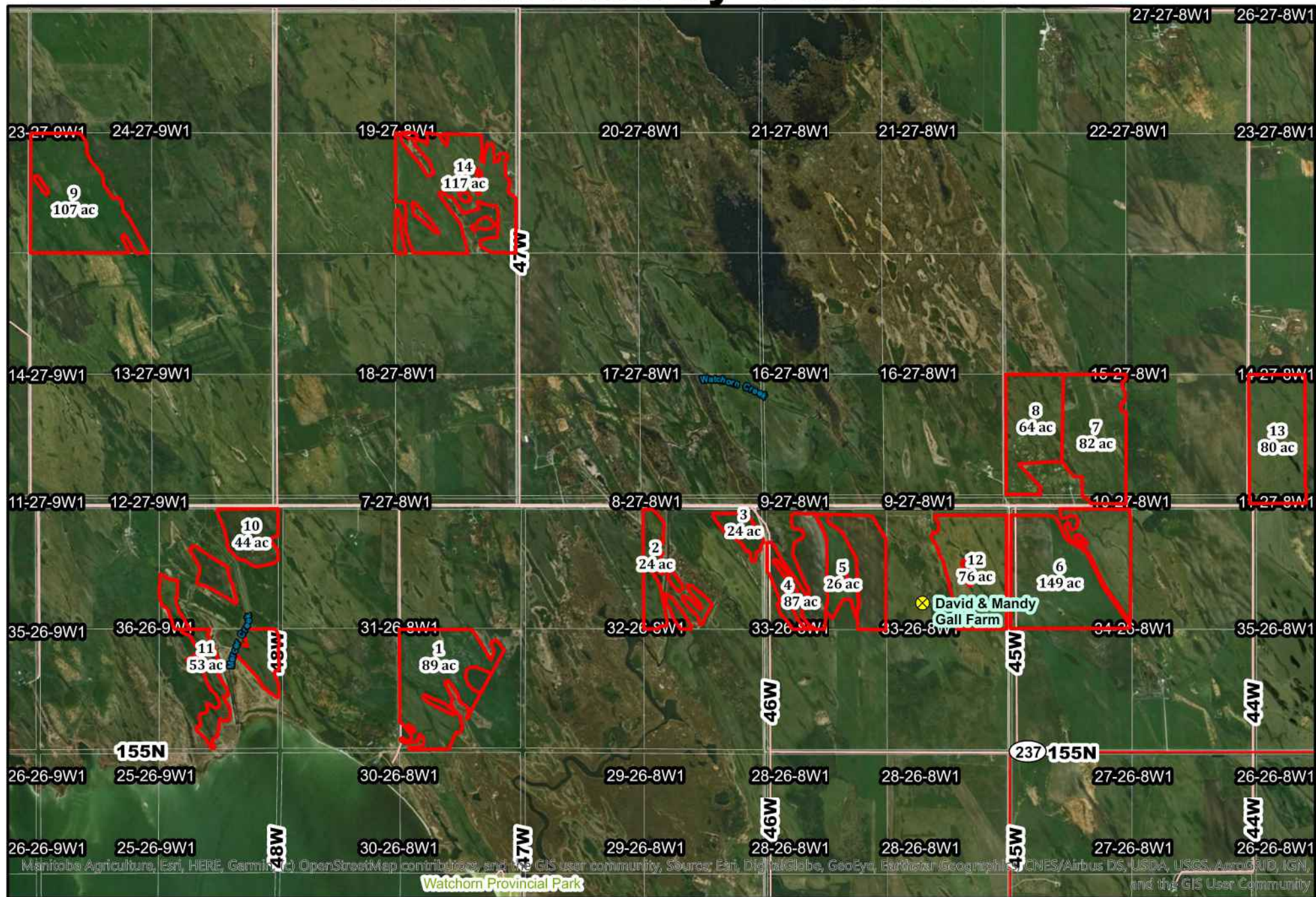


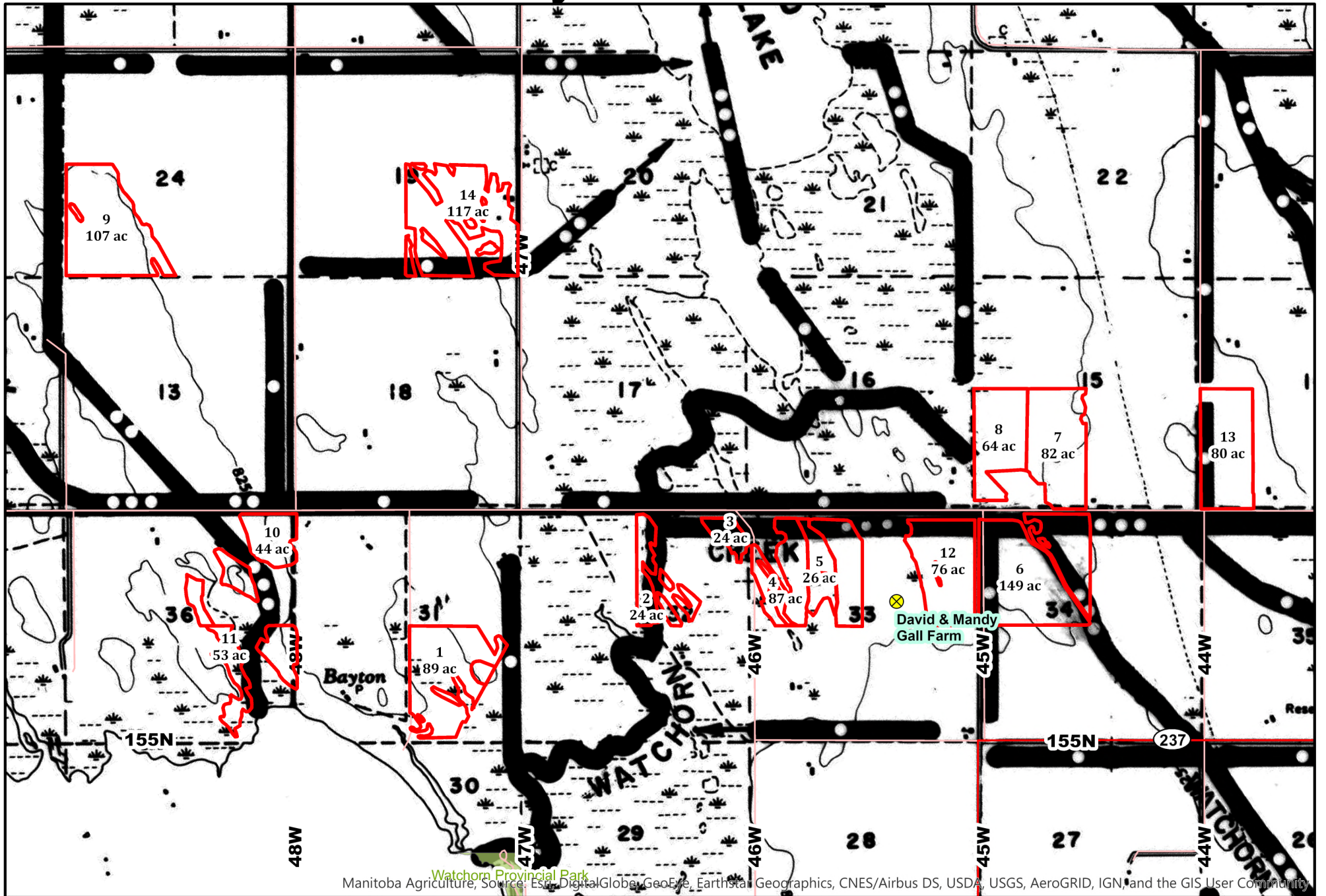
David and Mandy Gall Acres



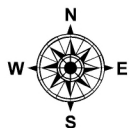
Map data © 2020 Mapbox, © OpenStreetMap contributors, and the GIS user community. Source: Esri, DigitalGlobe, GeoEye, Earthstar Geographics, CNES/Airbus DS, USDA, USGS, AeroGRID, IGN, and the GIS User Community



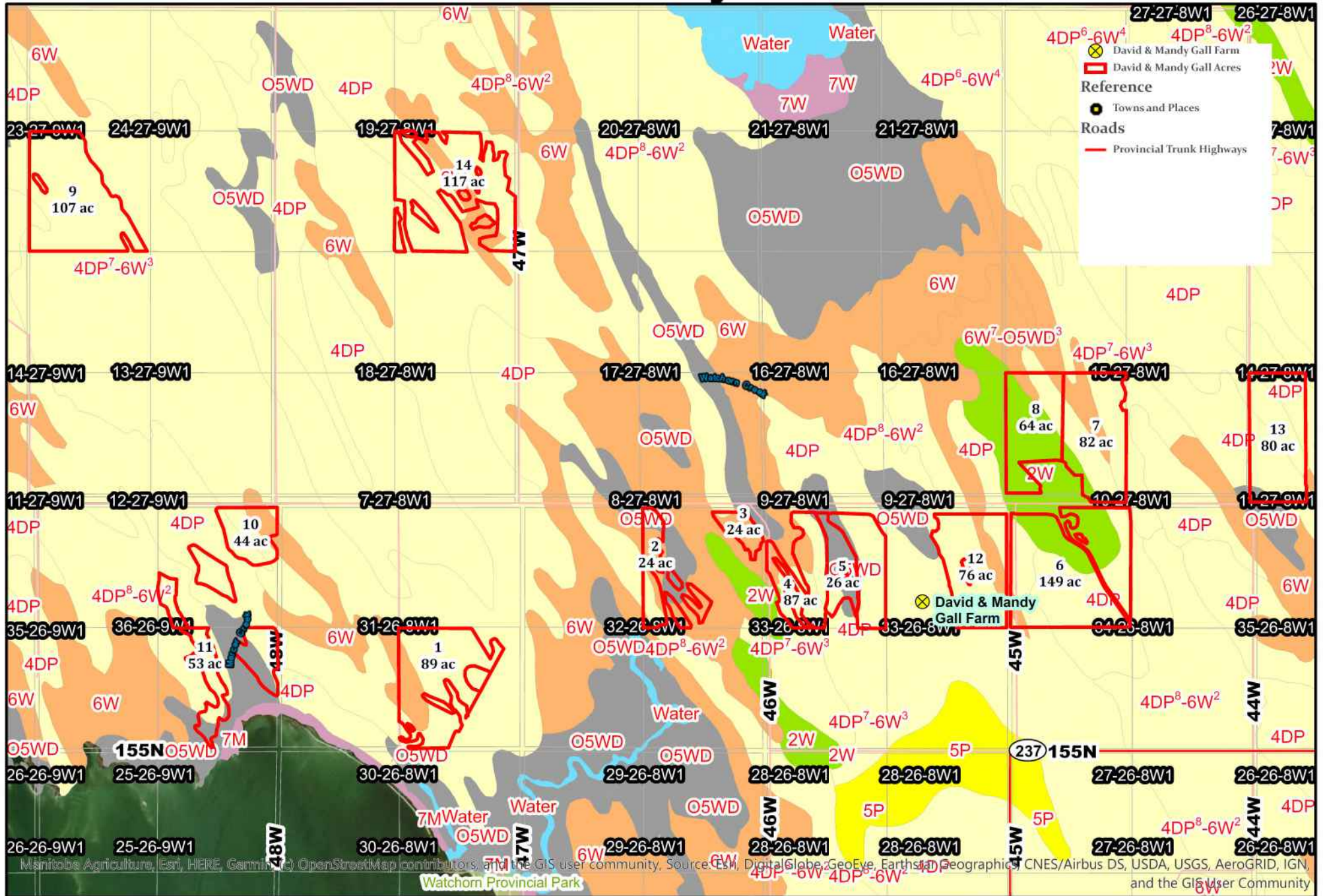
David and Mandy Gall - Land Use - Drains



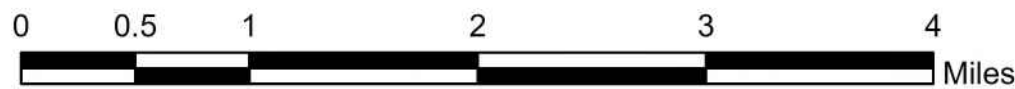
Manitoba Agriculture, Source: Esri, DigitalGlobe, GeoEye, Earthstar Geographics, CNES/Airbus DS, USDA, USGS, AeroGRID, IGN, and the GIS User Community



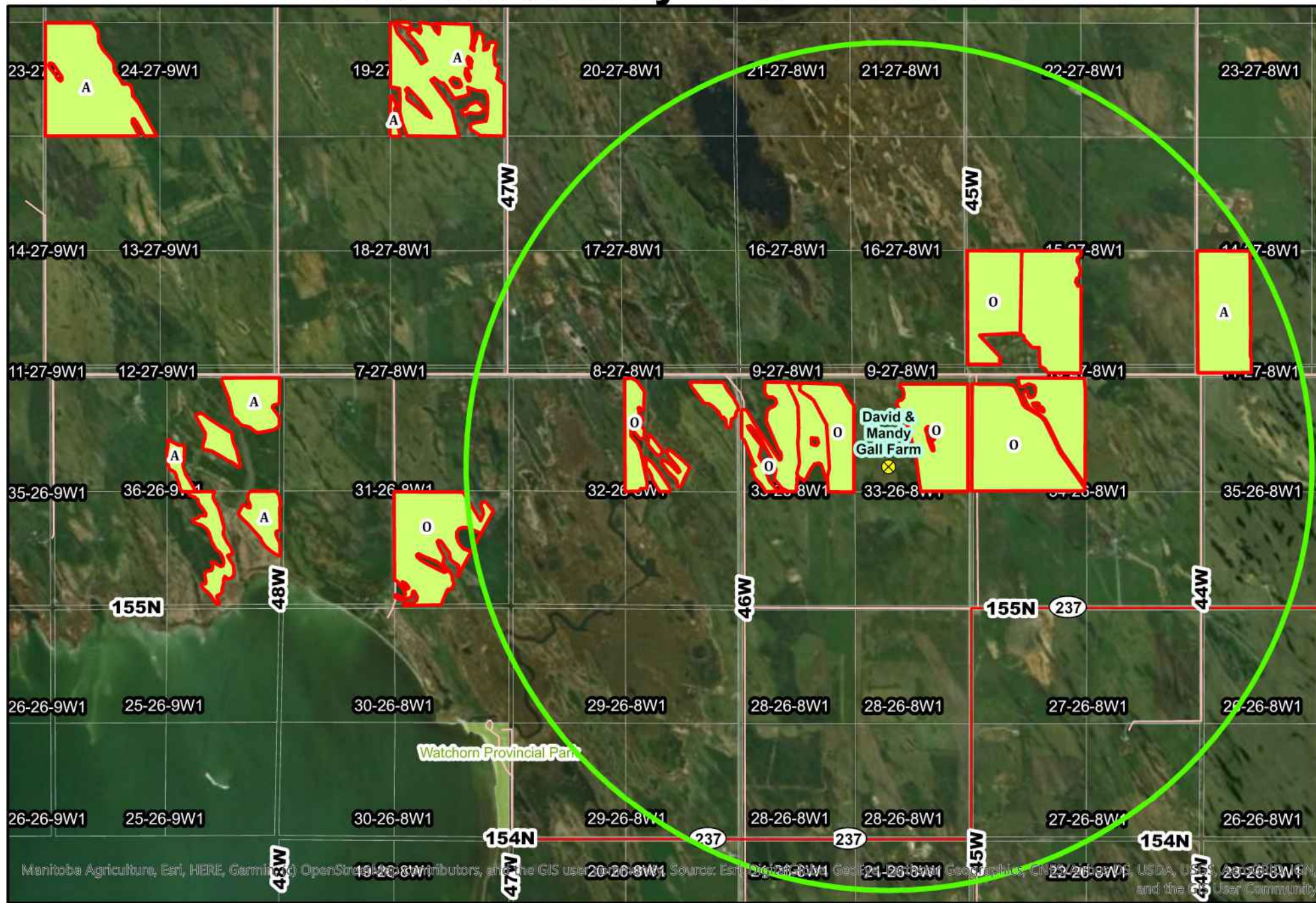
David and Mandy Gall: Soils



Manitoba Agriculture, Esri, HERE, Garmin, © OpenStreetMap contributors, and the GIS user community, Source: Esri, DigitalGlobe, GeoEye, Earthstar Geographics, CNES/Airbus DS, USDA, USGS, AeroGRID, IGN, and the GIS User Community



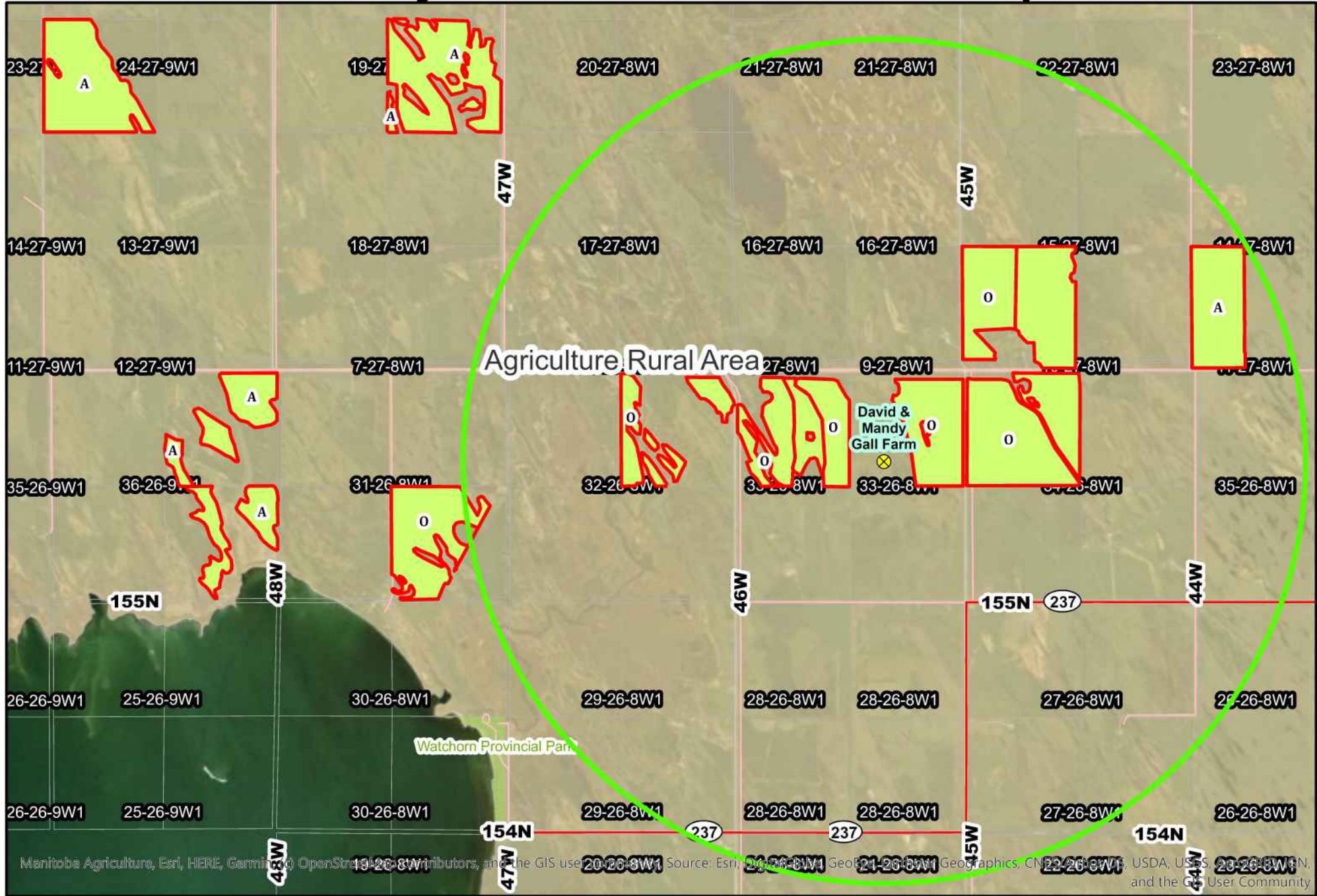
David and Mandy Gall - Land Use



Manitoba Agriculture, Esri, HERE, Garmin, (c) OpenStreetMap contributors, and the GIS user community, Source: Esri, DigitalGlobe, GeoEye, IGN, GeoEye, CNES/Airbus DS, USDA, USGS, AeroGRID, IGN, and the GIS User Community



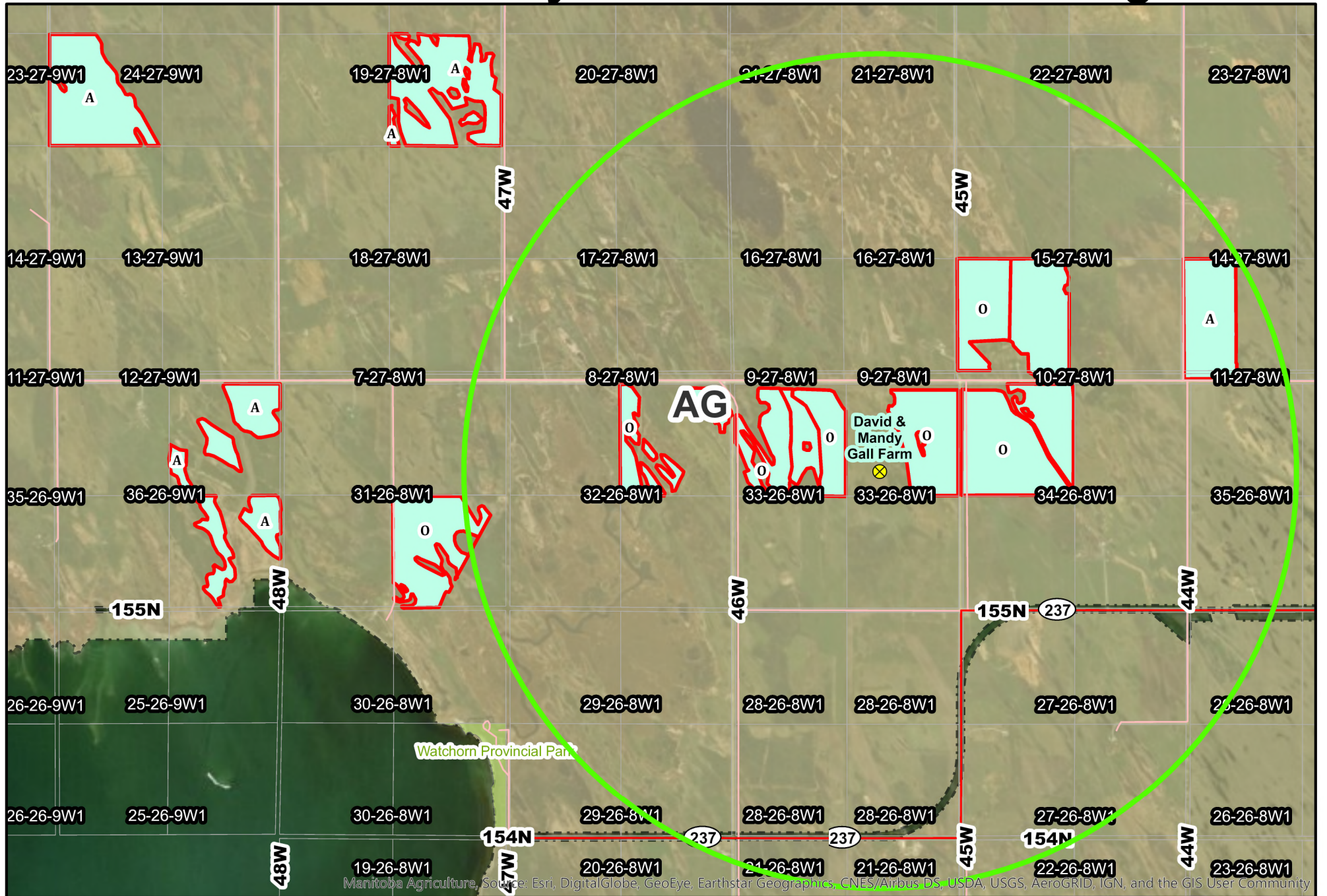
David and Mandy Gall - Land Use - Development Plan



Manitoba Agriculture, Esri, HERE, Garmin, © OpenStreetMap contributors, and the GIS user community. Source: Esri, DigitalGlobe, GeoEye, IGN, GeoEye, GeoEye, GeoEye, USDA, USGS, AeroGRID, IGN, and the GIS User Community



David and Mandy Gall - Land Use - Zoning



Manitoba Agriculture, Source: Esri, DigitalGlobe, GeoEye, Earthstar Geographics, CNES/Airbus DS, USDA, USGS, AeroGRID, IGN, and the GIS User Community

