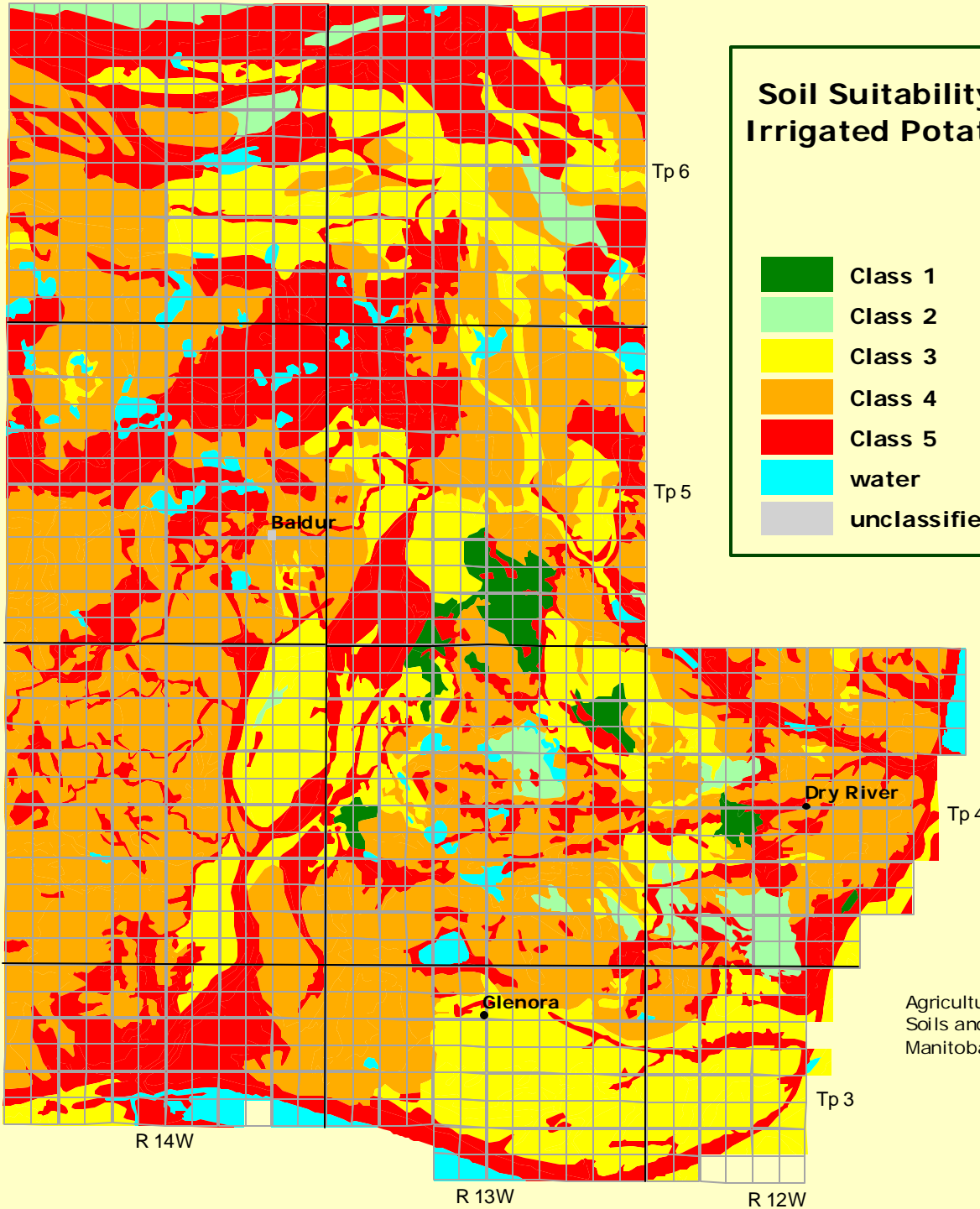

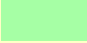







# Rural Municipality of Argyle

## Soil Suitability for Irrigated Potato Production



**Soil Suitability Classes for Irrigated Potato Production**

	Area (ha)	% of RM
 Class 1	1269	1.6
 Class 2	2136	2.6
 Class 3	16836	20.6
 Class 4	31647	38.7
 Class 5	26646	32.6
 water		
 unclassified		



Agricultural Resources Section  
Soils and Crops Branch  
Manitoba Agriculture and Food

*subject to revision*

Universal Transverse Mercator (NAD27) Projection  
Derived from Detail Soil Information (1:50 000)