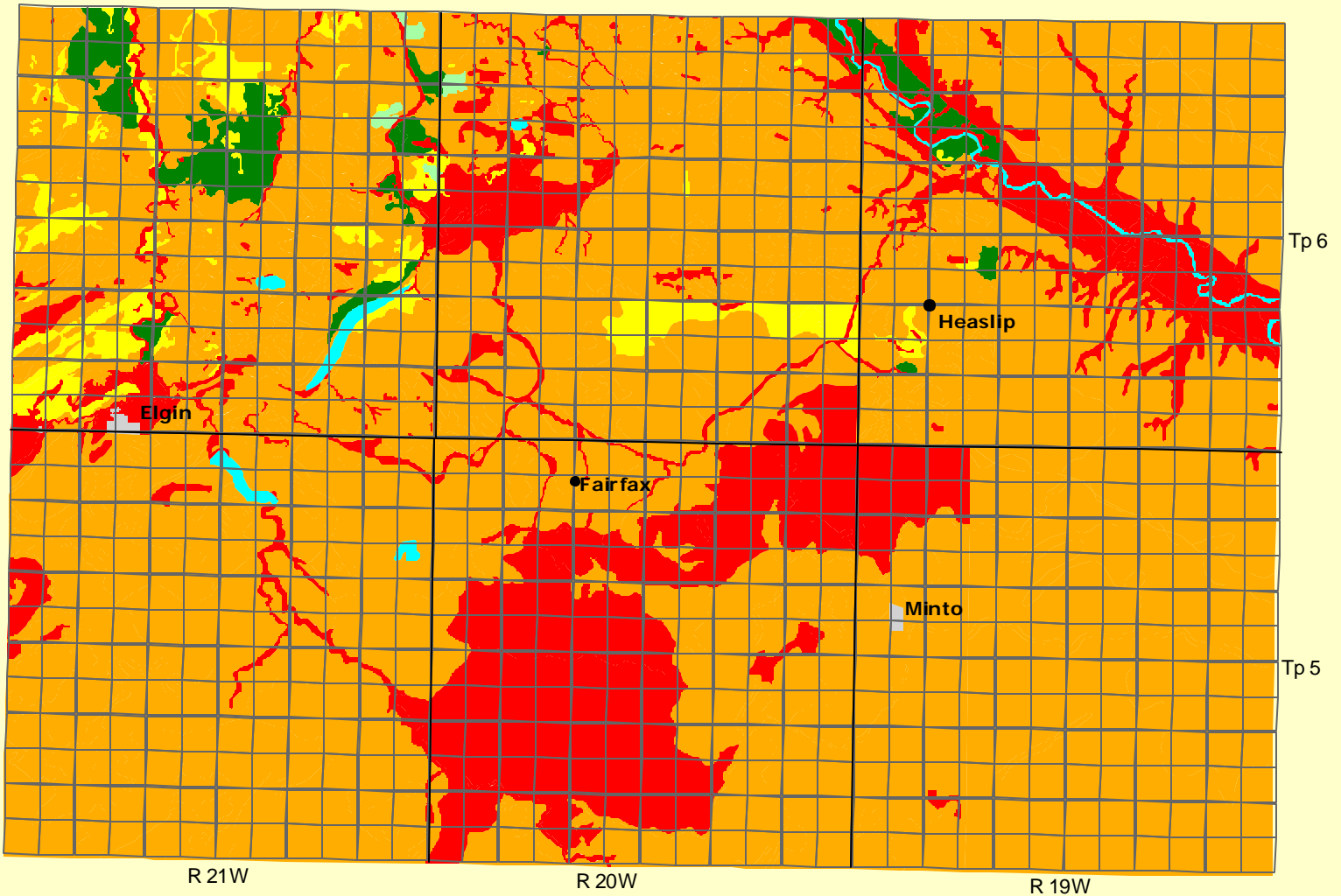


Rural Municipality of Whitewater

Soil Suitability for Irrigated Potato Production



5 0 5 10 Kilometers


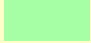







Universal Transverse Mercator (NAD27) Projection
 Derived from Detail Soil Information
 (1:20 000, 1:40 00 and 1:126 720)

Agricultural Resources Section
 Soils and Crops Branch
 Manitoba Agriculture and Food

subject to revision

Soil Suitability Classes for Irrigated Potato Production

		Area (ha)	% of RM
	Class 1	959	1.7
	Class 2	79	0.1
	Class 3	1532	2.6
	Class 4	42959	73.9
	Class 5	12728	21.1
	water		
	unclassified		